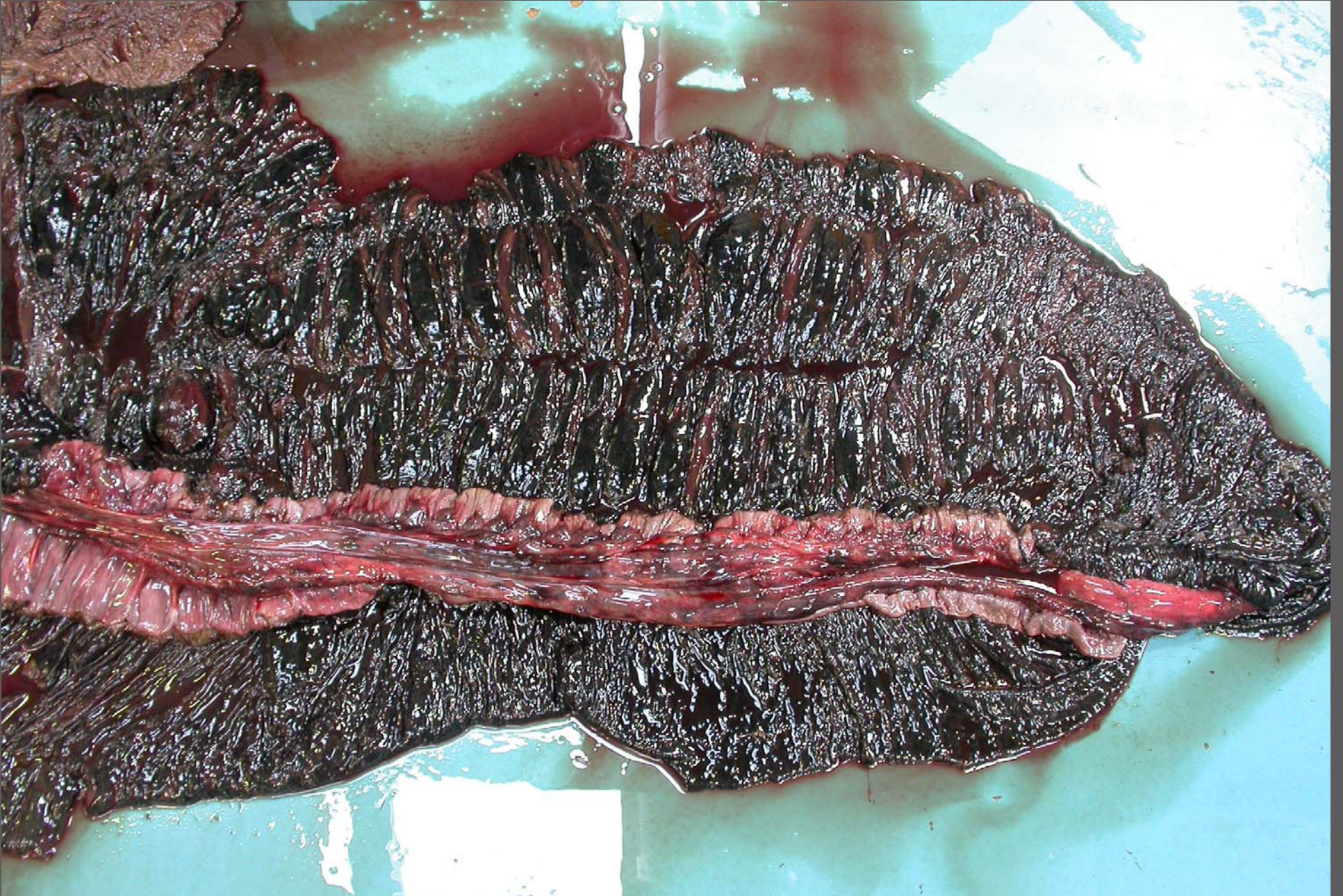


Jejunum – severe edema secondary to dysplasia





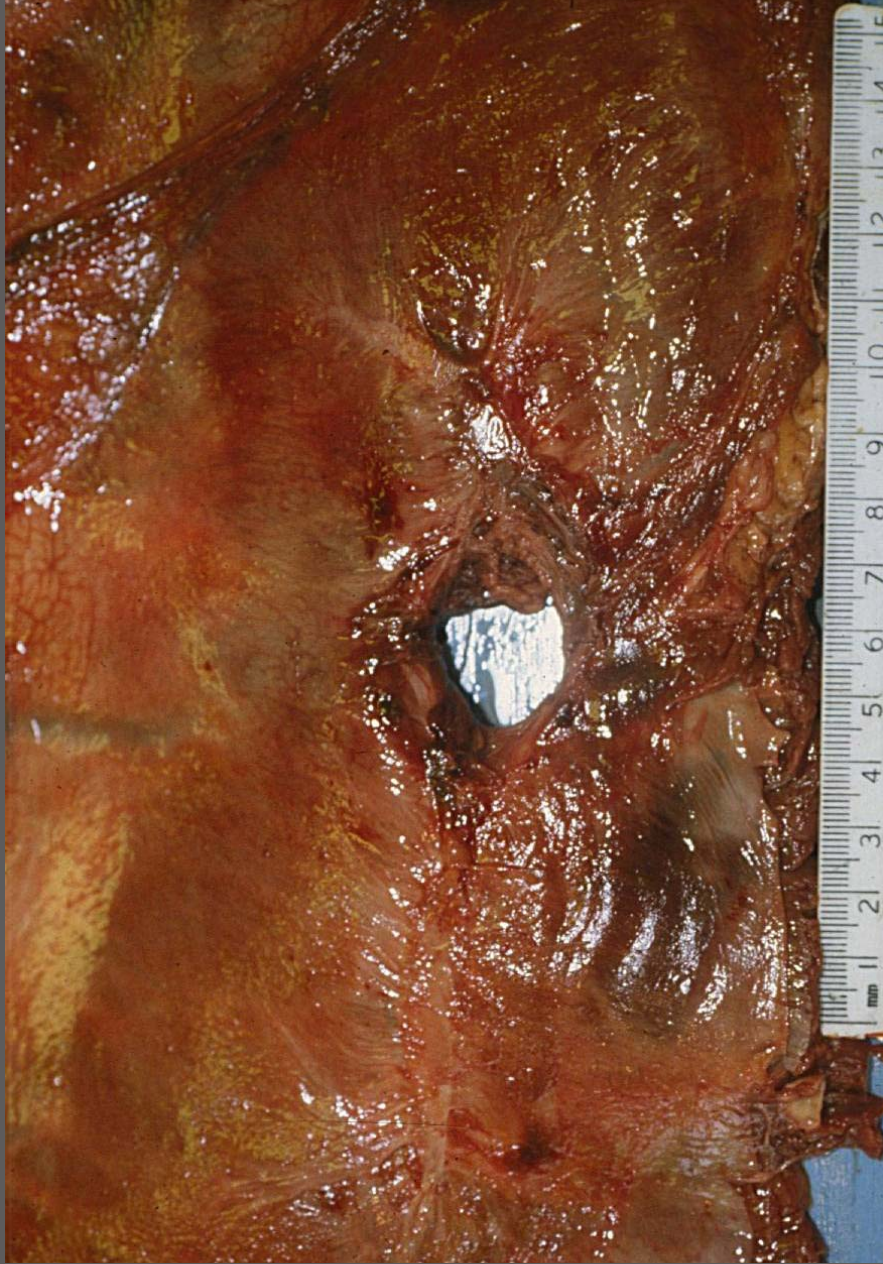
Large colon volvulus with hemorrhagic (ischemic) necrosis





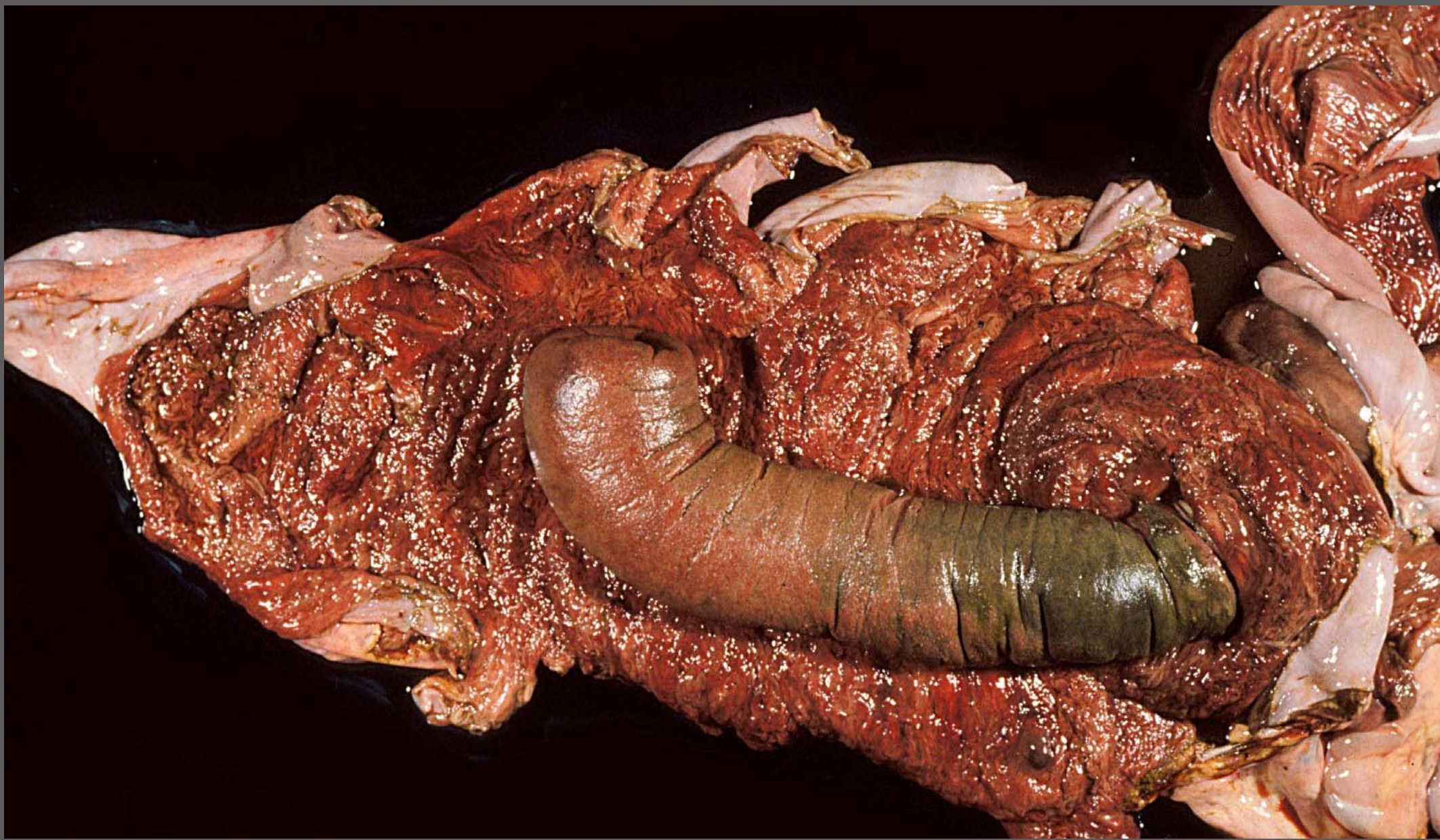
Jejunum – strangulating lipoma stalk with hemorrhagic (ischemic) necrosis





Diaphragmatic traumatic hernial ring (left) inducing small intestine segmental ischemic hemorrhagic necrosis





Ileocecal intussusceptions with ileum ischemic hemorrhagic necrosis