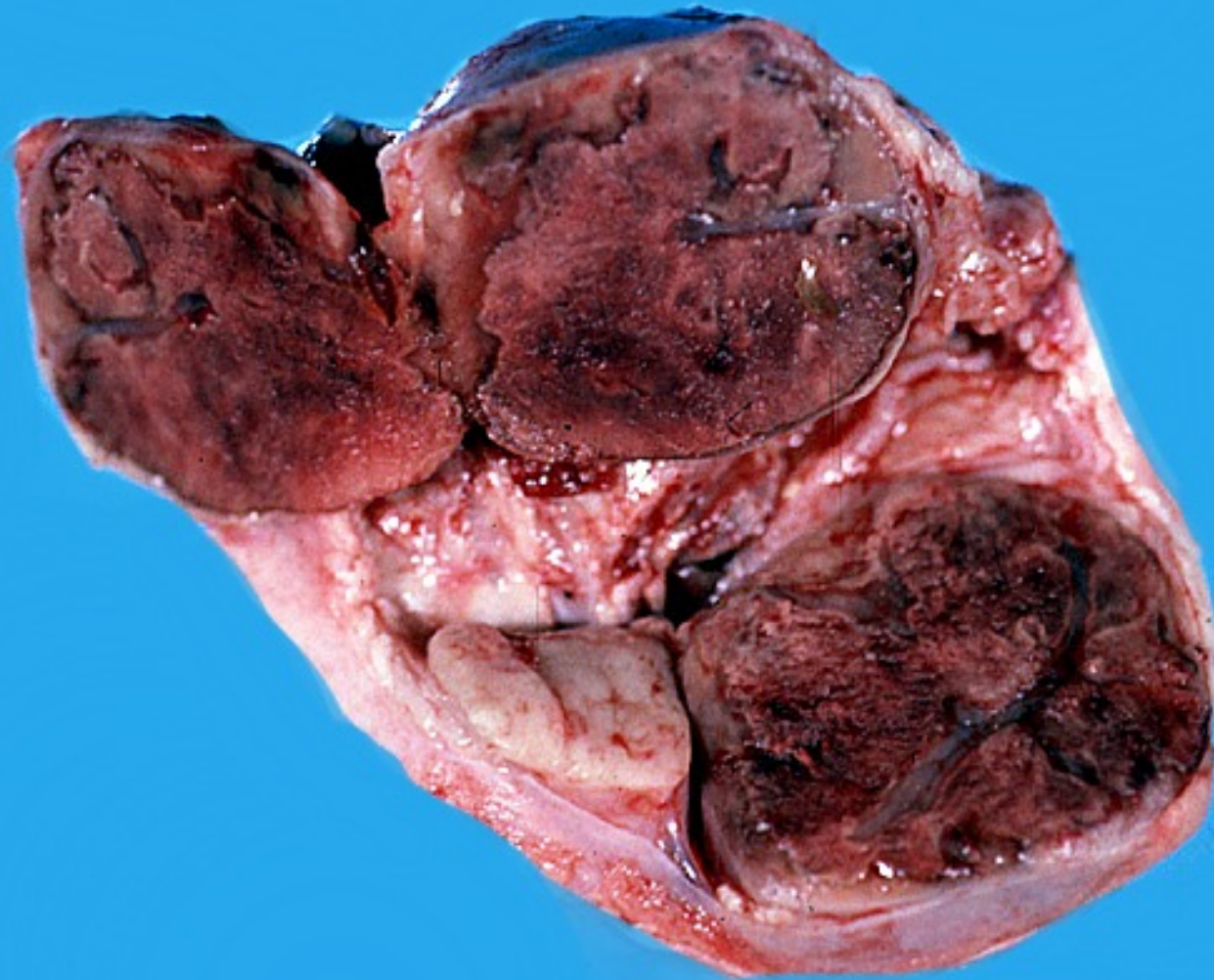


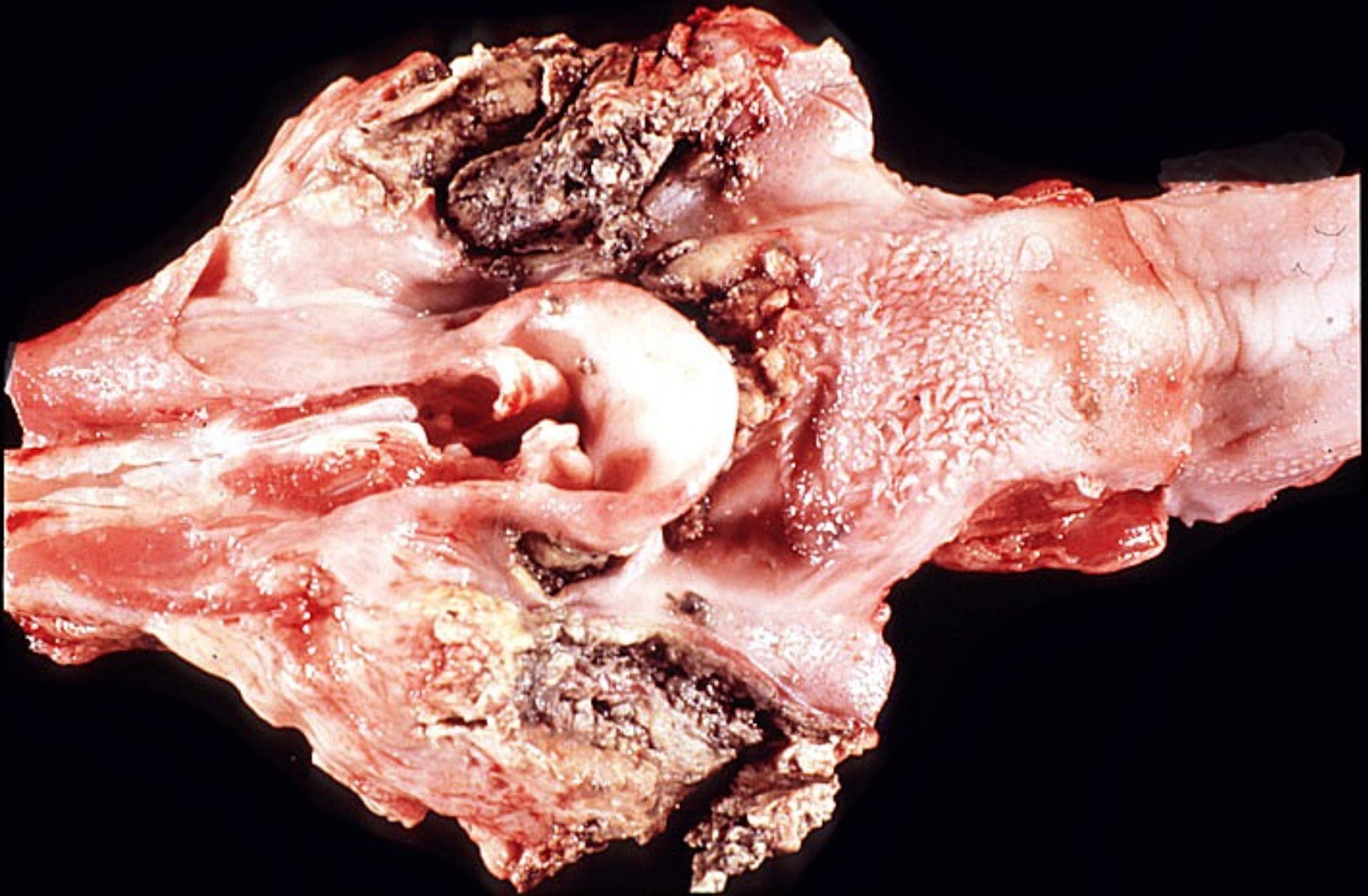
Intestine – lymphoma



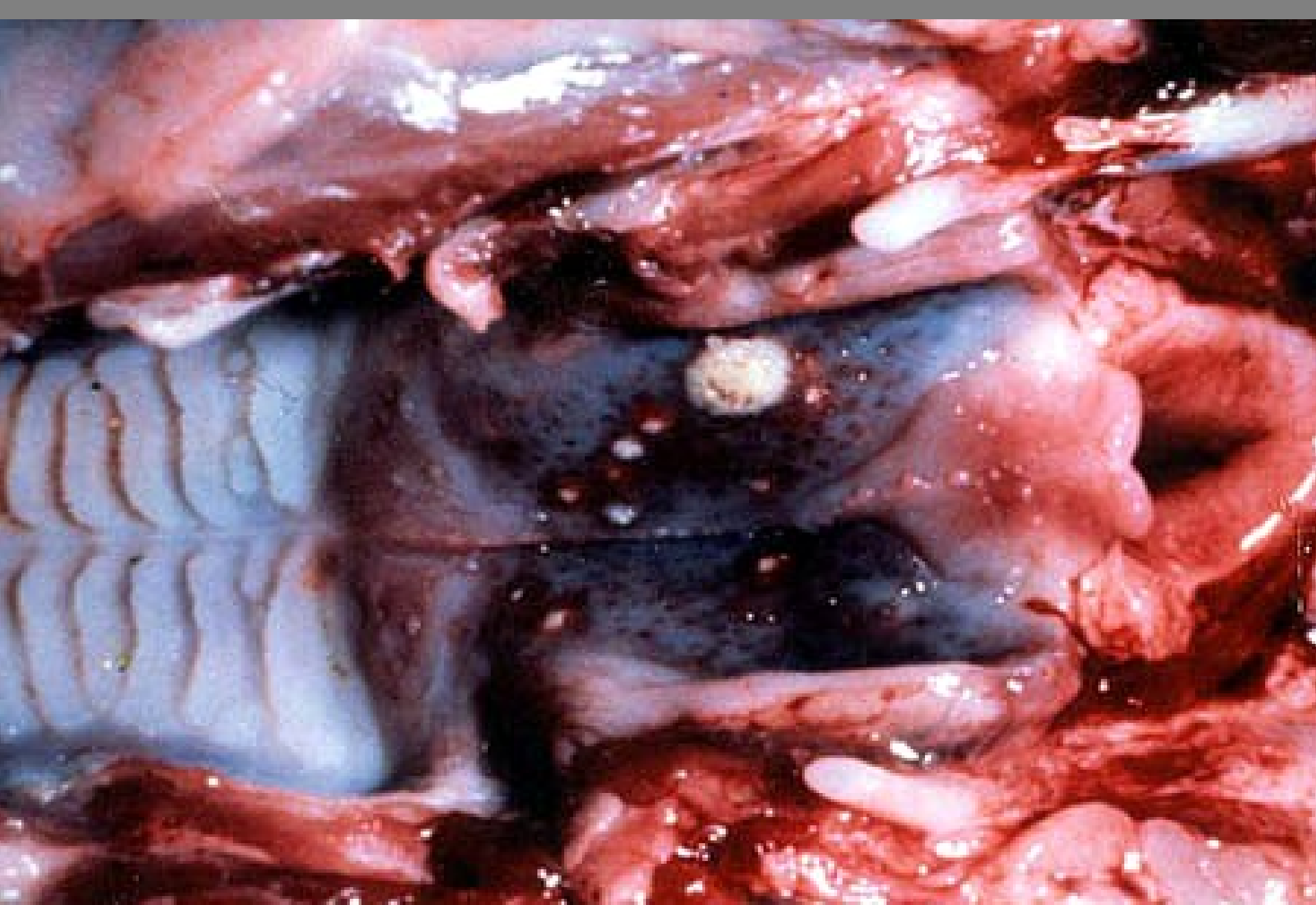
Lymph node – hemorrhage – CSF pestivirus



Lymph node – necrosis – Salmonella

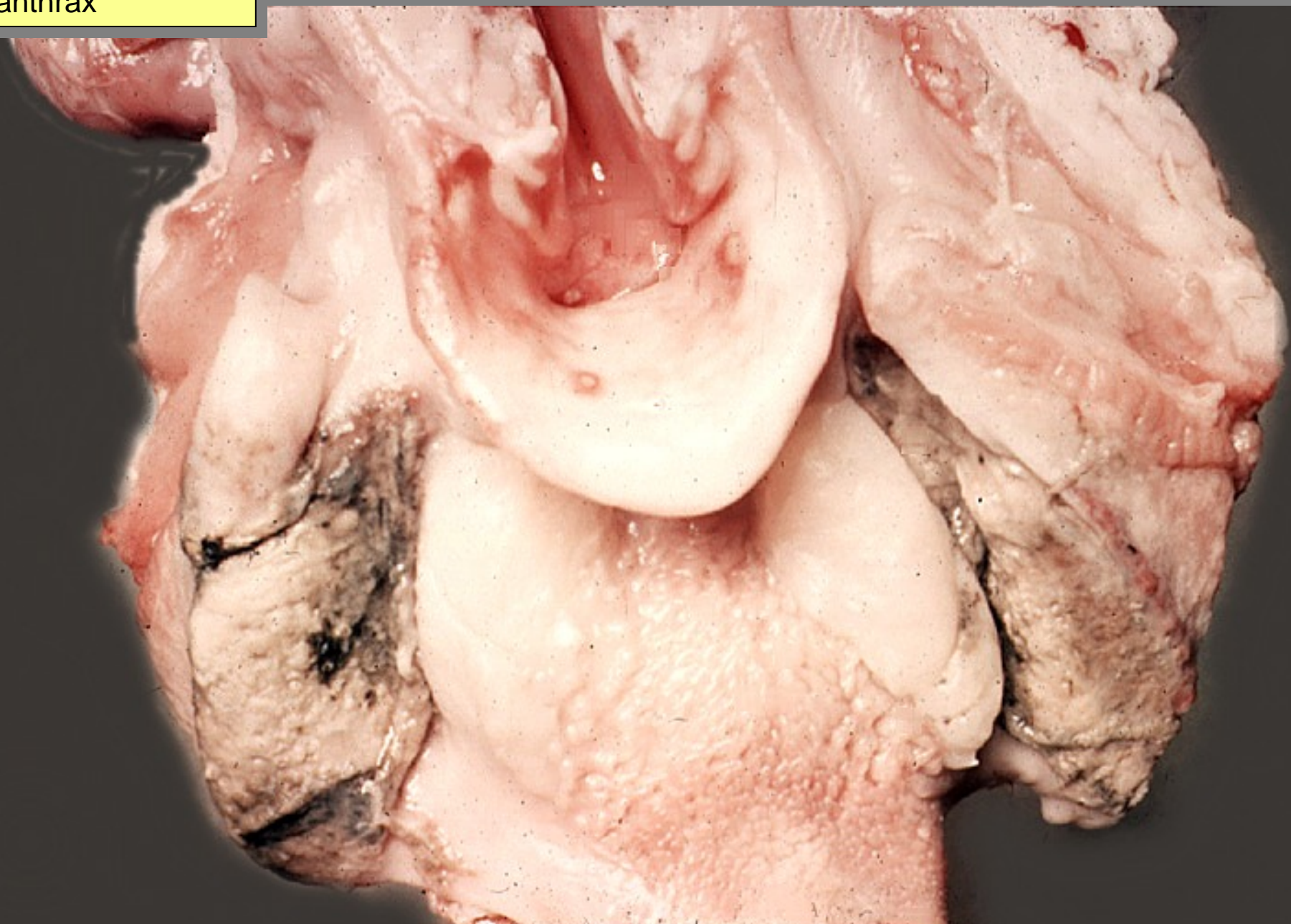


Tonsils – hemorrhage and necrosis – ASF virus

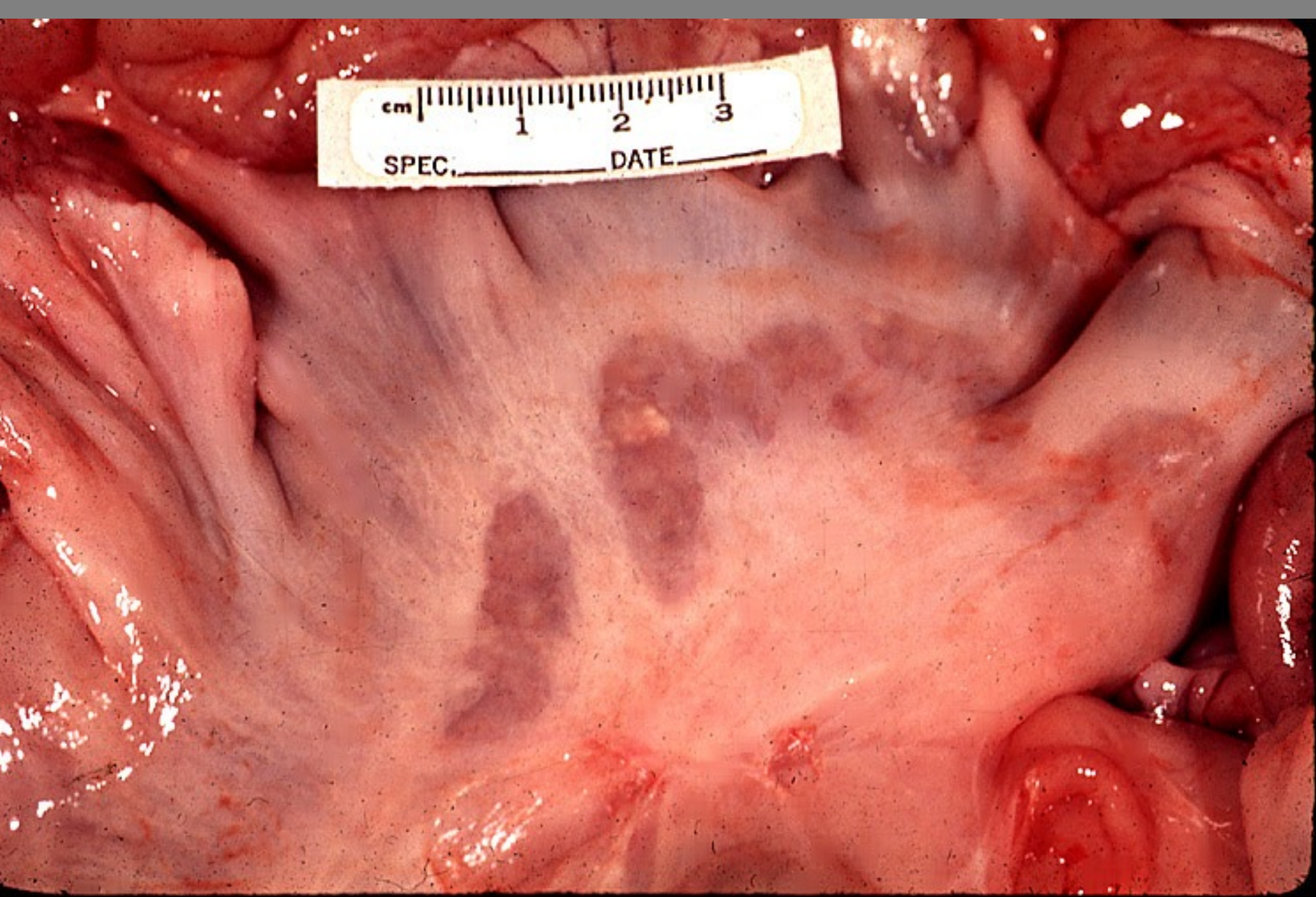


Tonsils – necrosis – pseudorabies suid herpesvirus

anthrax



Tonsils – necrosis – anthrax – *Bacillus anthracis*



Mesenteric lymph nodes – caseous necrosis - *Mycobacterium avium*