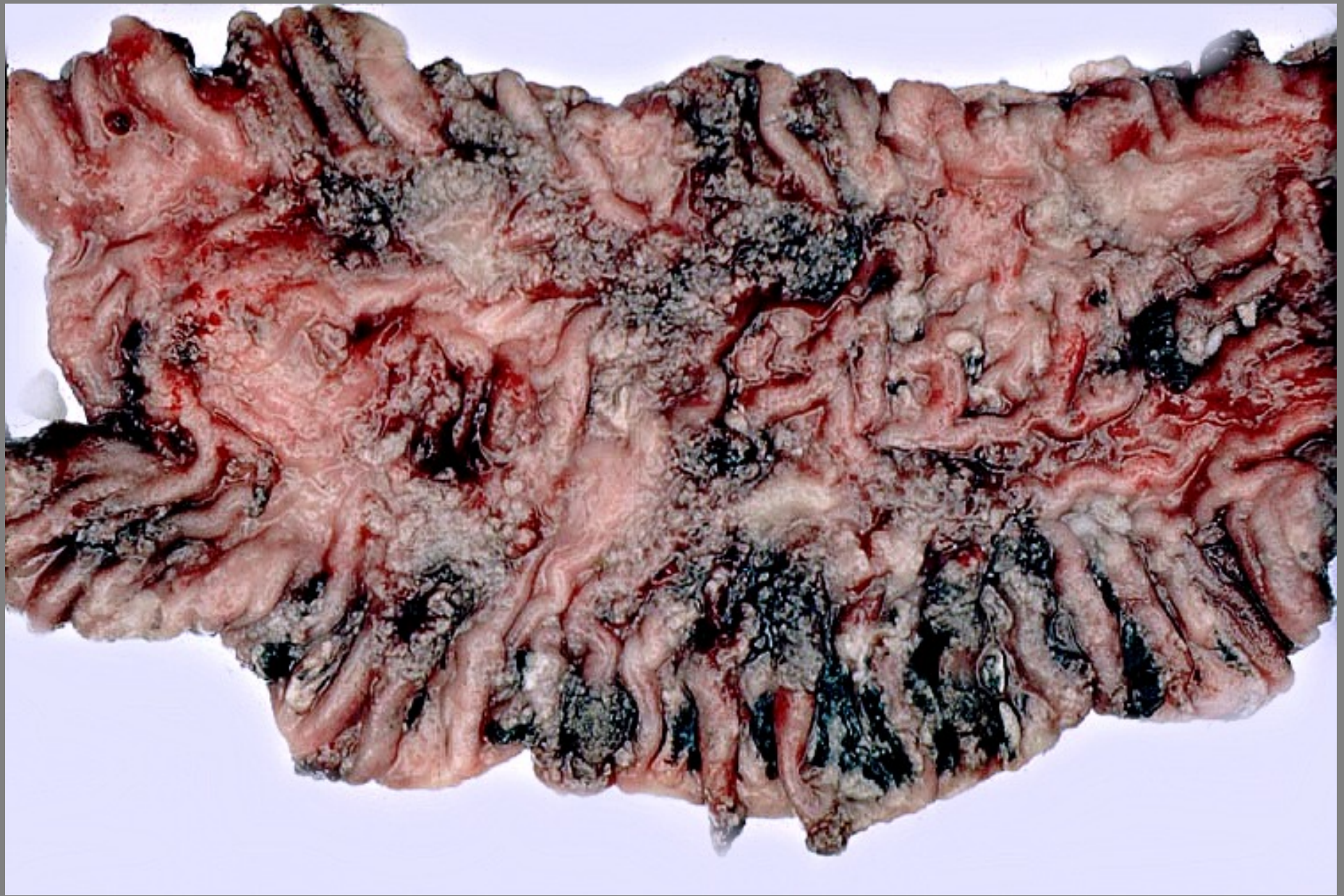


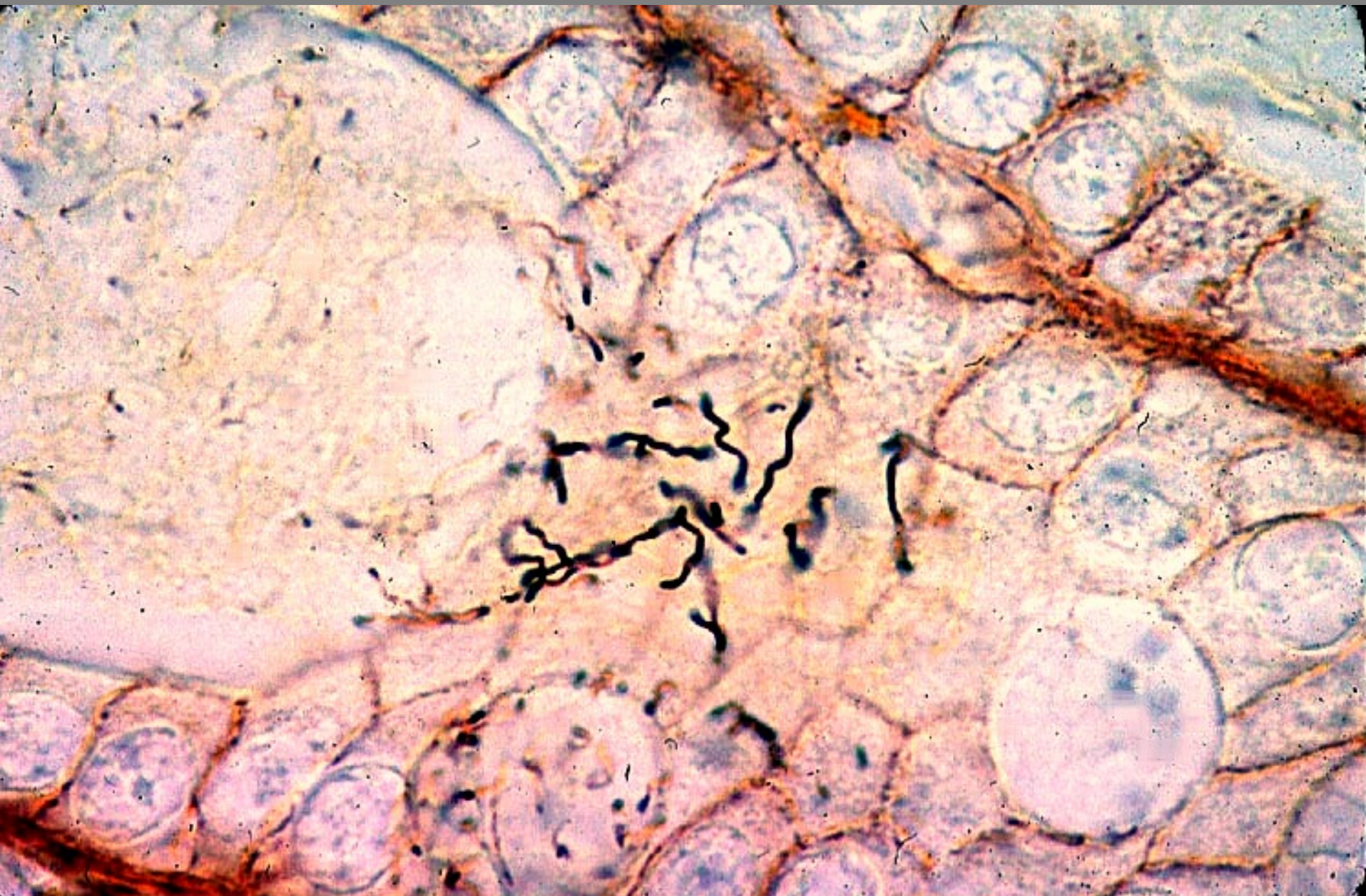
Intestine – proliferative hemorrhagic distal ileitis – *Lawsonia intracellulare*



Brachyspira aalborgi
Brachyspira alvinipulli,
Brachyspira hyodysenteriae
Brachyspira pilosicoli
Brachyspira innocens



Large intestine – proliferative ulcerative necrotizing colityphlitis – *Brachyspira hyodysenteriae*



Colon – *Brachyspira hyodysenteriae* - Whartin Starry silver stain



Colon – severe acute edema – edema disease – *E. coli*