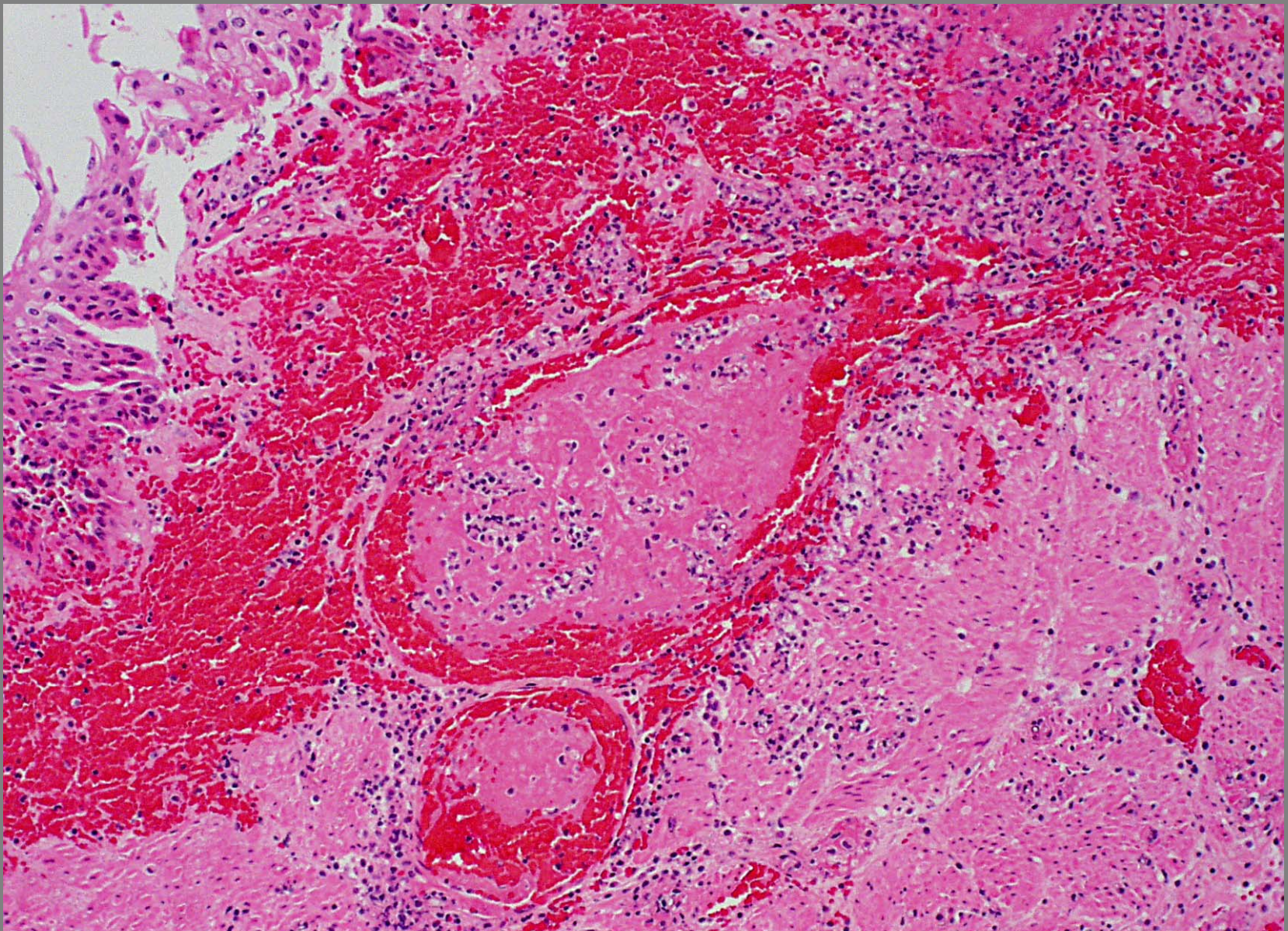




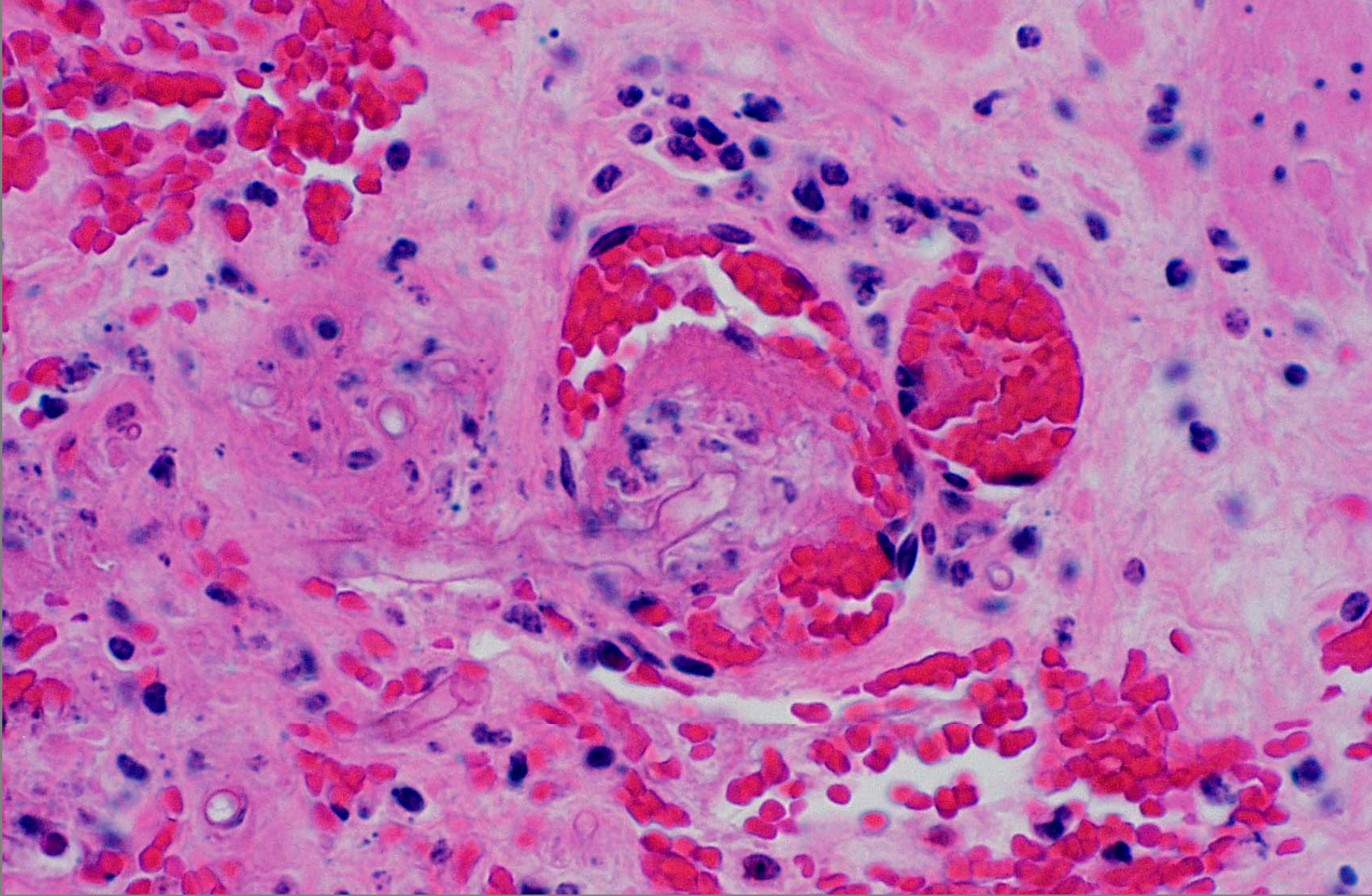
**Reticulum wall – hemorrhagic necrosis –  
Zygomycetes**





**Reticulum wall – thrombosis and hemorrhagic necrosis – Zygomycetes**





**Reticulum wall – thrombosis and hemorrhagic necrosis – Zygomycetes**







**Rumen – chronic ulcers**





What has this to do with hardware disease?