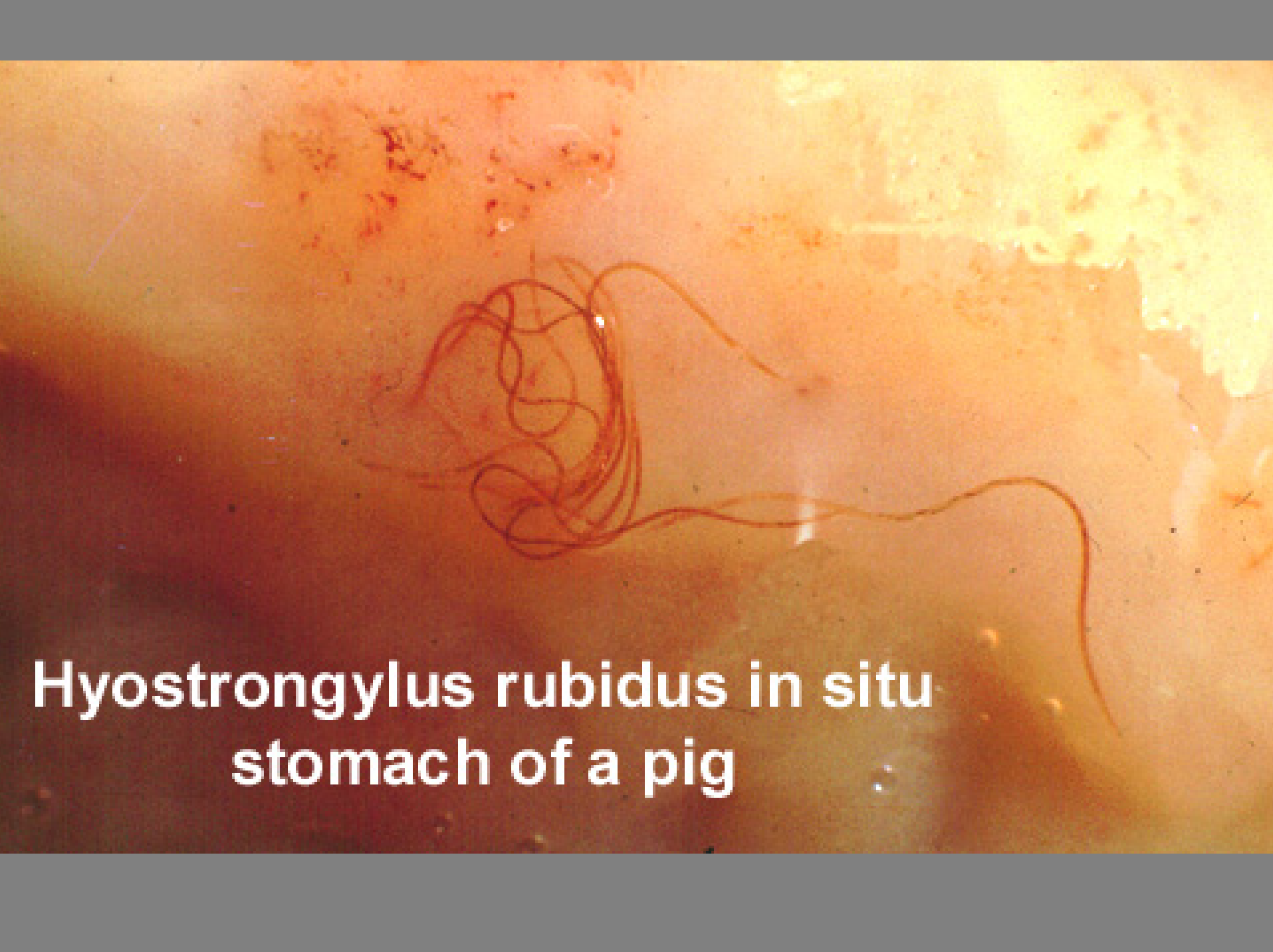
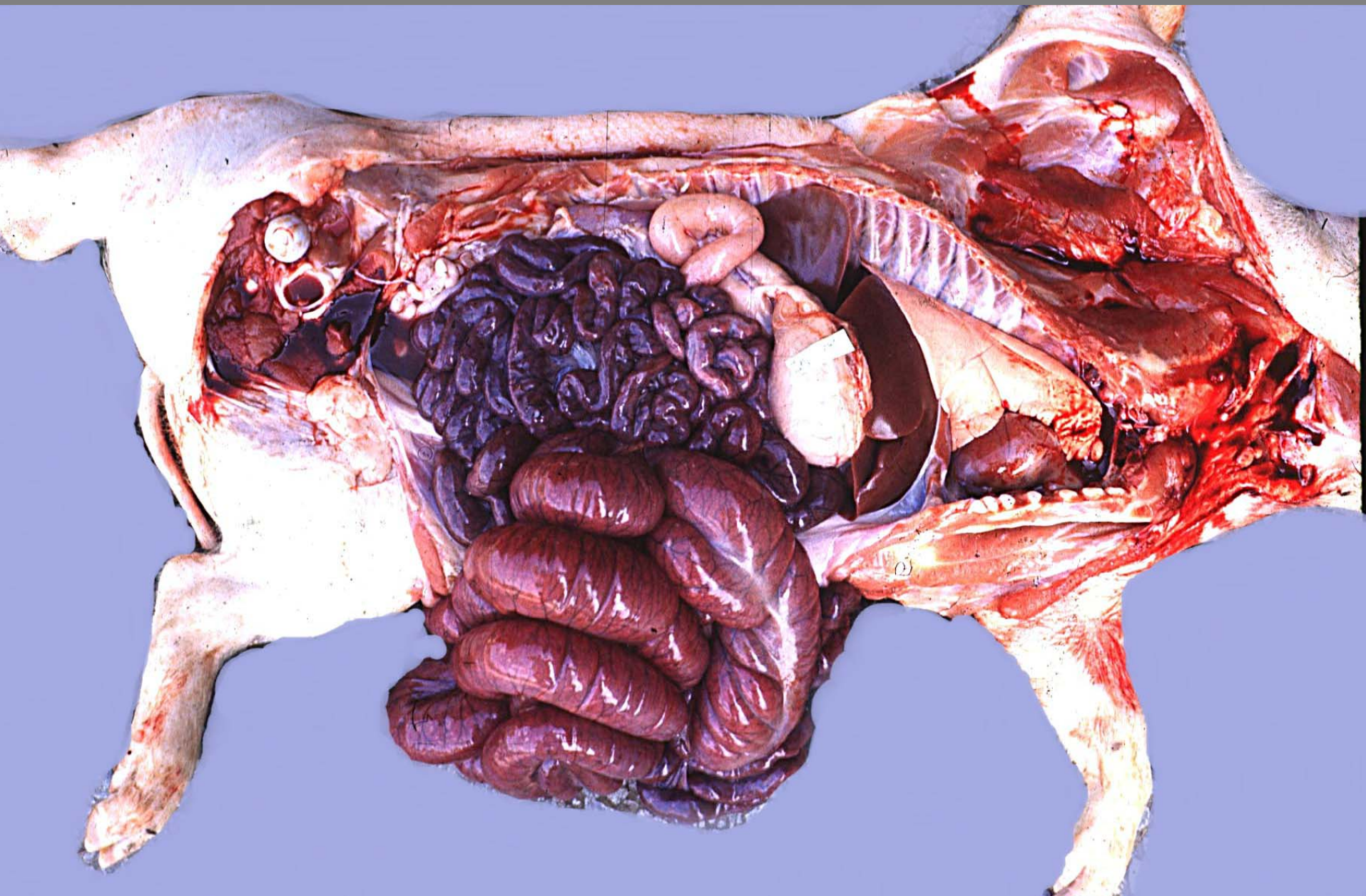
The image shows a microscopic view of several pale, rounded nodules against a reddish-brown background. The nodules are irregular in shape and appear to be embedded in a textured, fibrous matrix. The lighting is somewhat uneven, with brighter areas on the nodules and darker areas in the surrounding tissue.

**Hyostrongylus rubidus  
stomach nodules**



**Hyostromgylus rubidus in situ  
stomach of a pig**



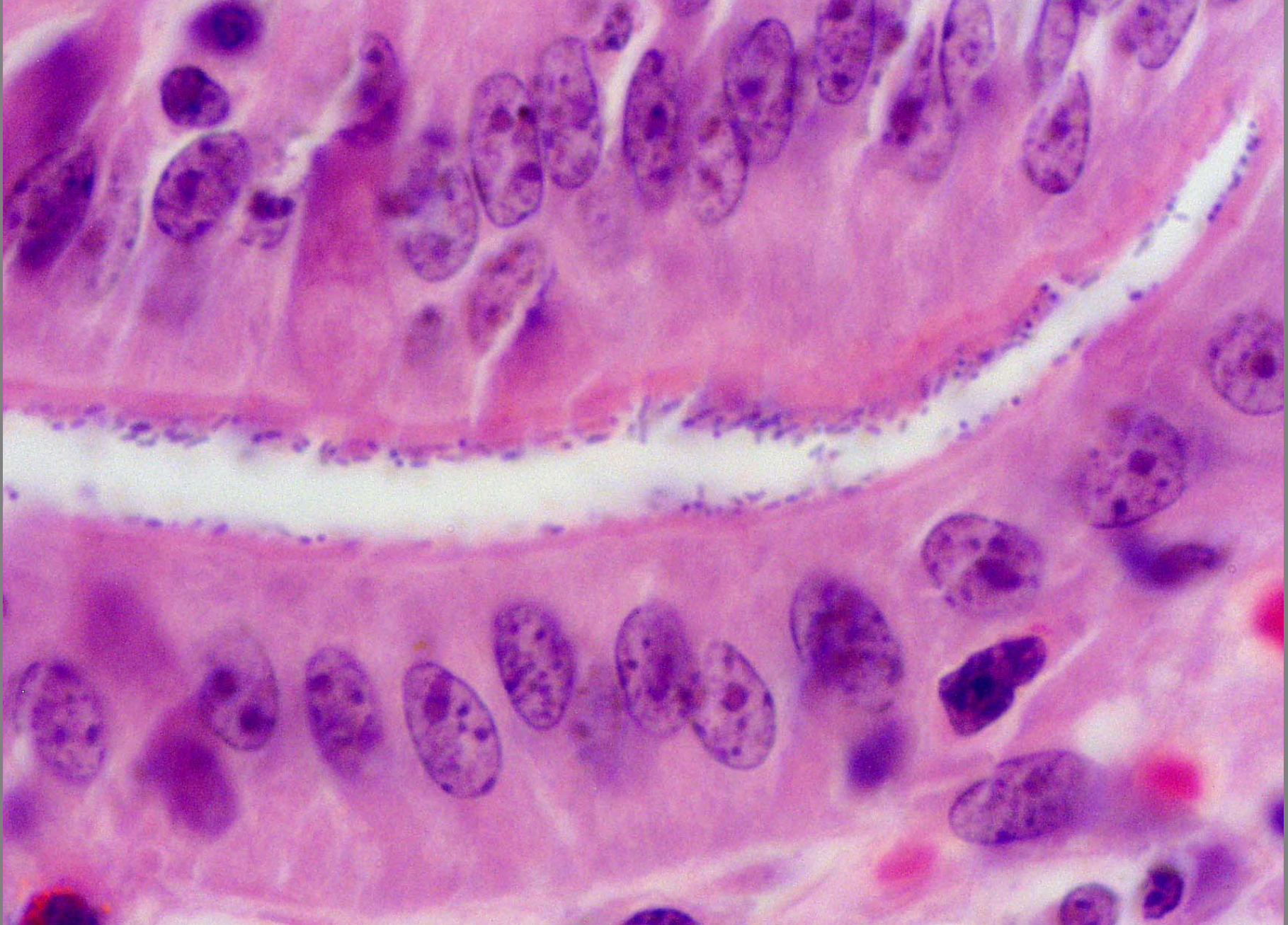
Intestine – volvulus with ischemic hemorrhagic necrosis





Intestine – catarrhal enteritis – various etiologies – *Escherichia coli* in this case





Intestine – *Escherichia coli*