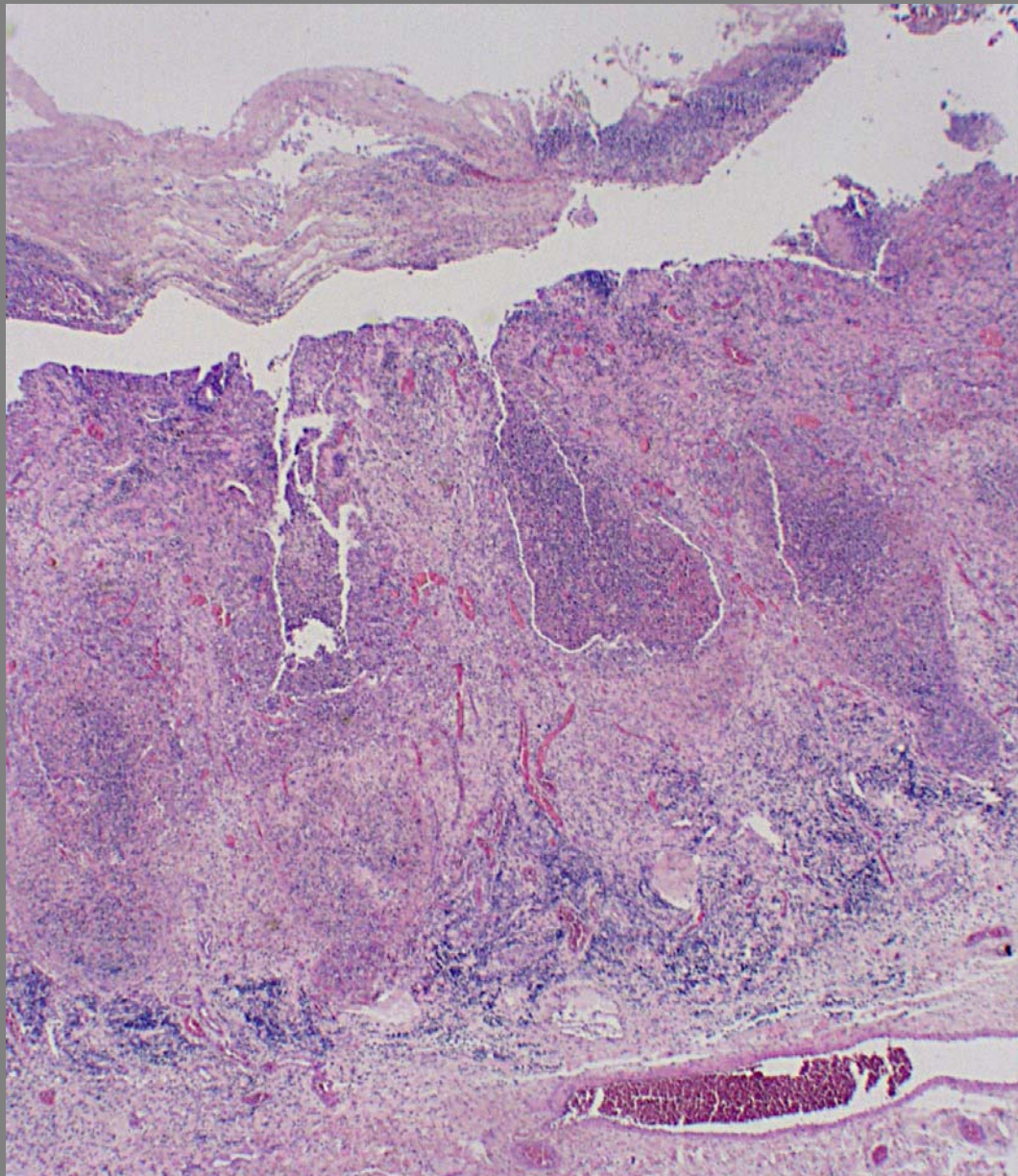


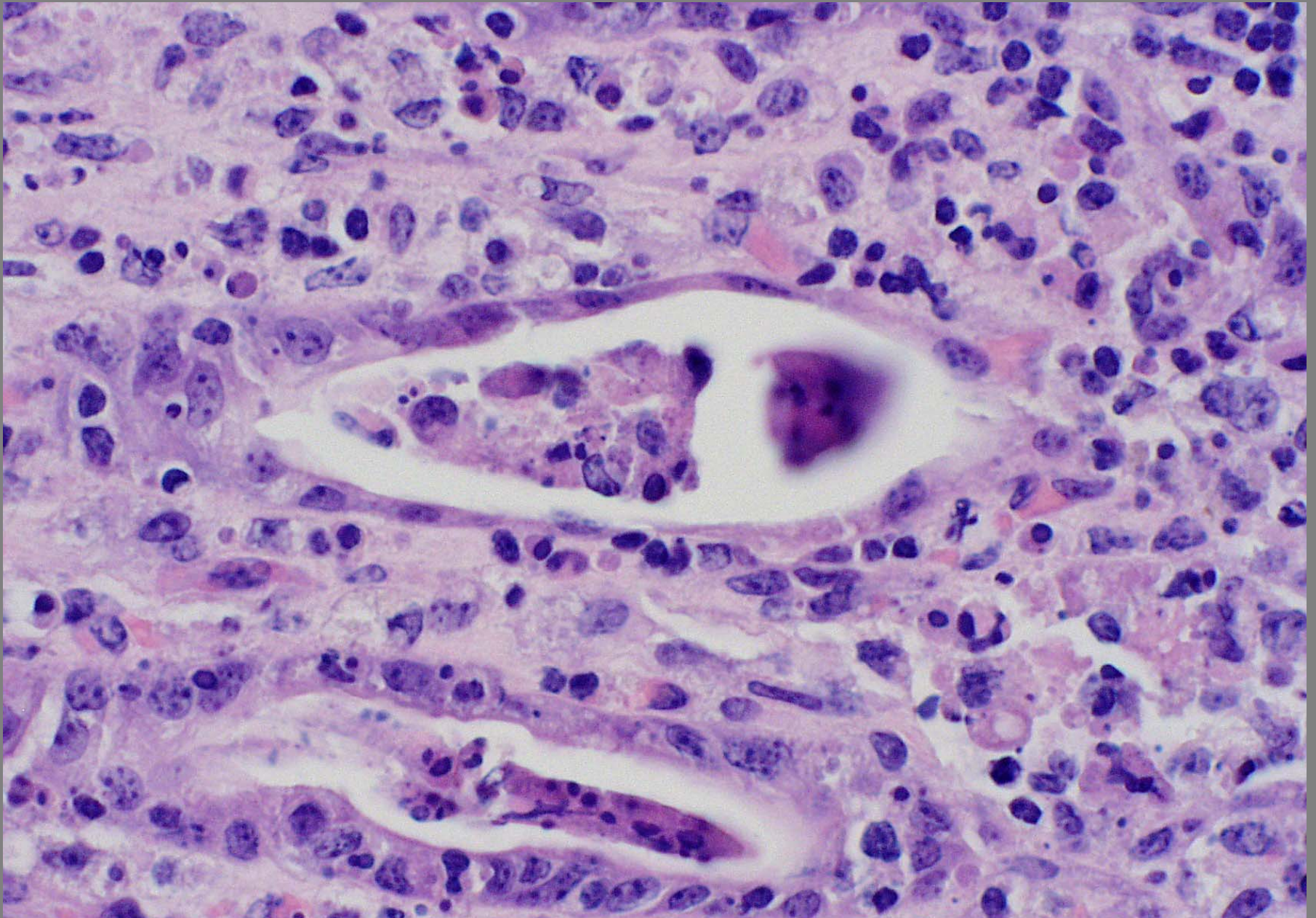
Calf – Ileum – PI immunotolerant animal – mucosal disease BVD pestivirus – IPIHC



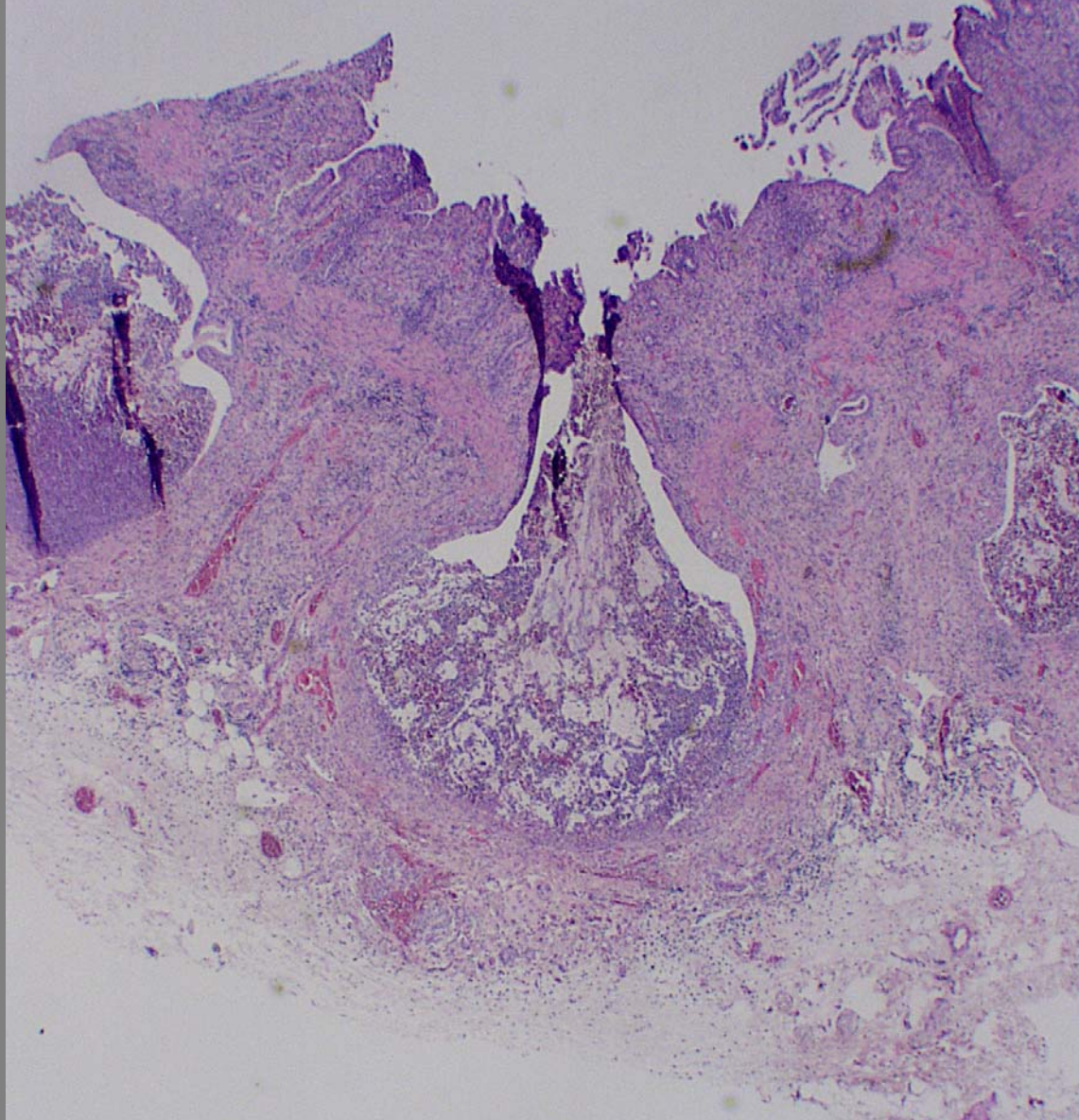
**Cecum – fibrinonecrotic enterotyphlocolitis (diphtheritic)
– rinderpest morbillivirus**



**Cecum – fibrinonecrotic enterotyphlocolitis (diphtheritic)
– rinderpest morbillivirus**



Intestine – fibrinonecrotic enterotyphlocolitis (diphtheritic) – crypt necrosis – rinderpest morbillivirus



Intestine – fibrinonecrotic enterotyphlocolitis (diphtheritic) – post necrotic patch collapse – rinderpest morbillivirus