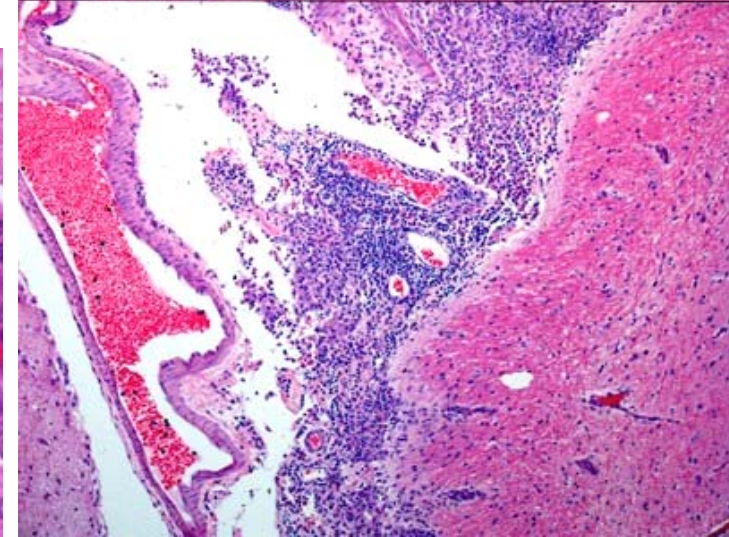
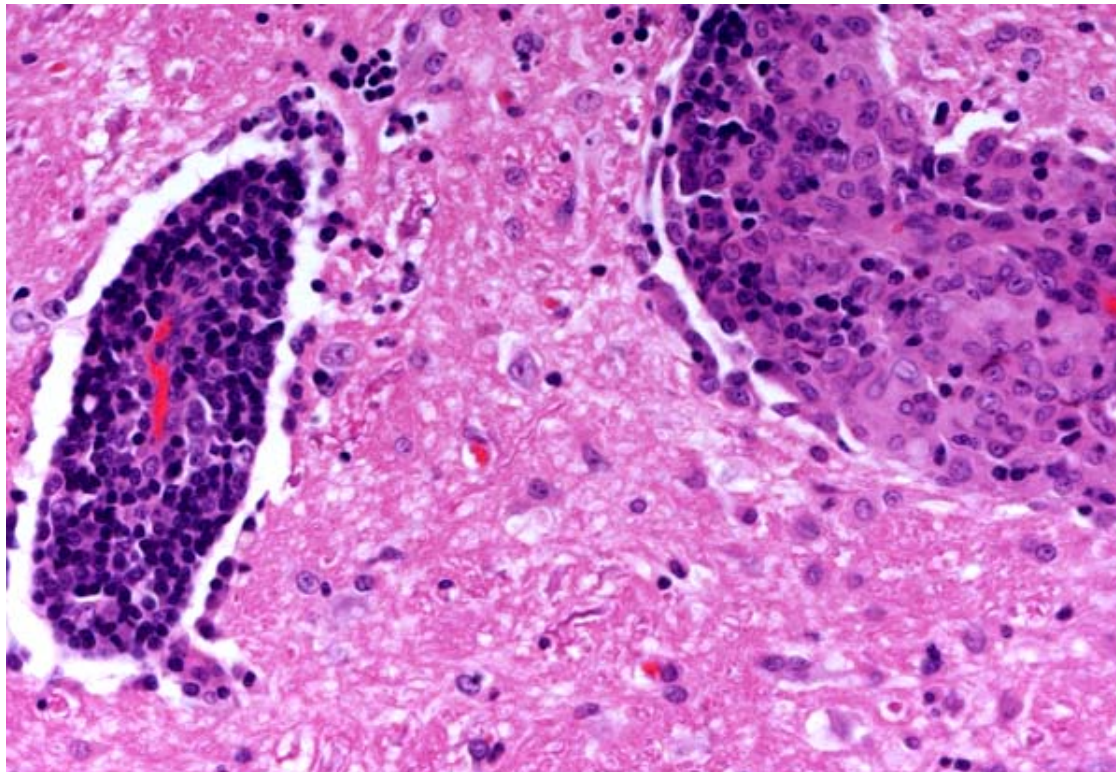
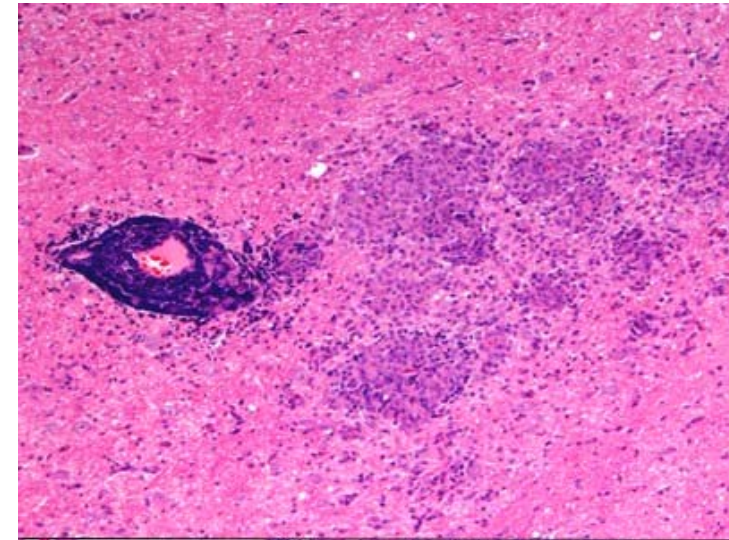
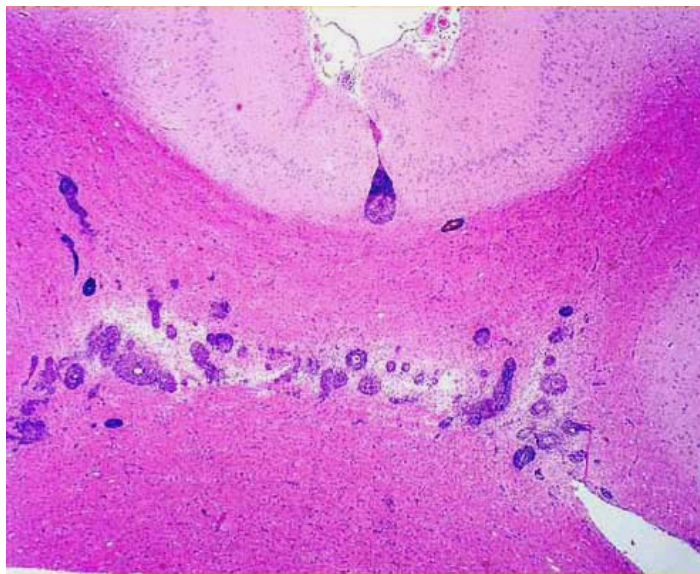
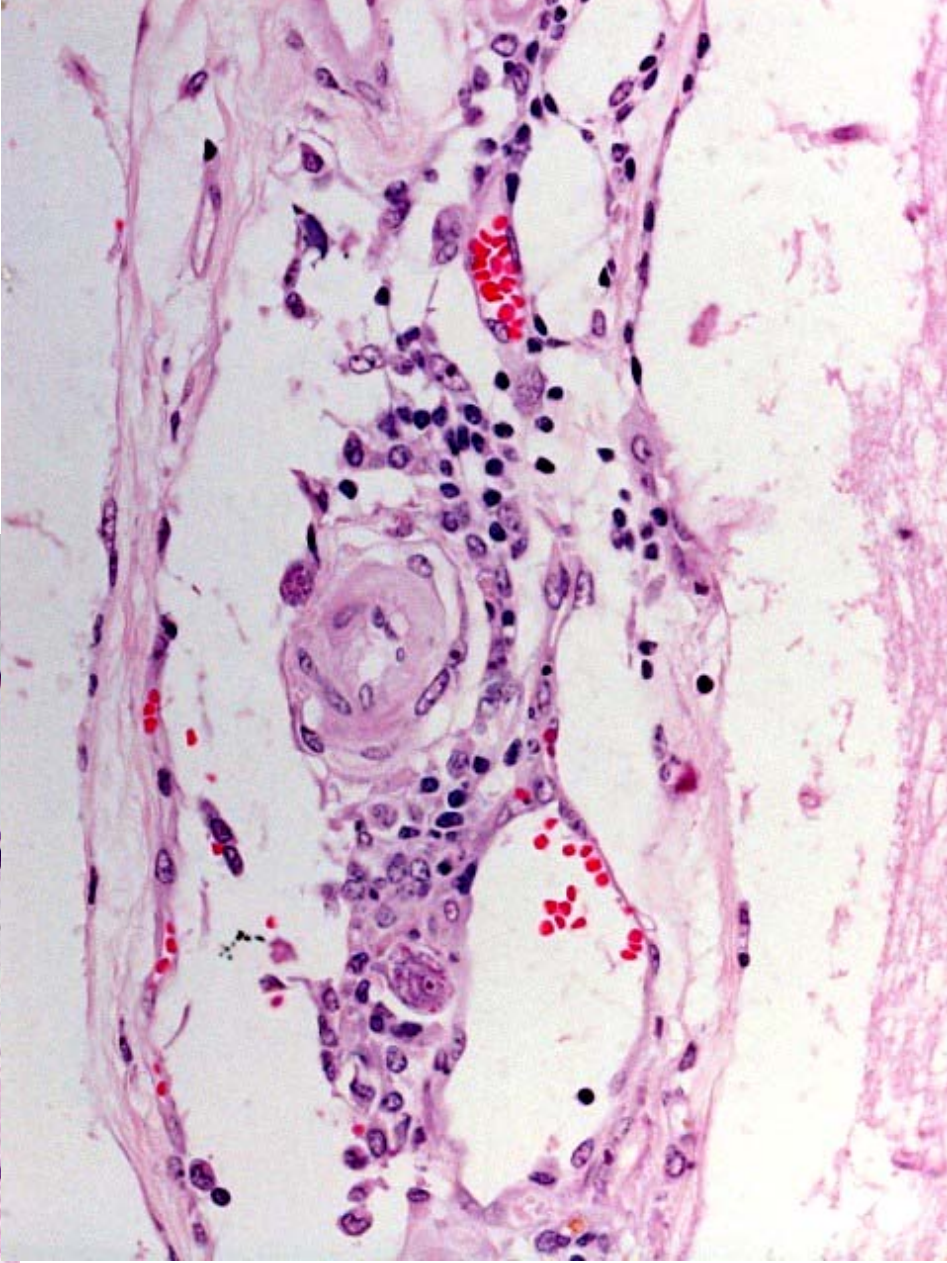
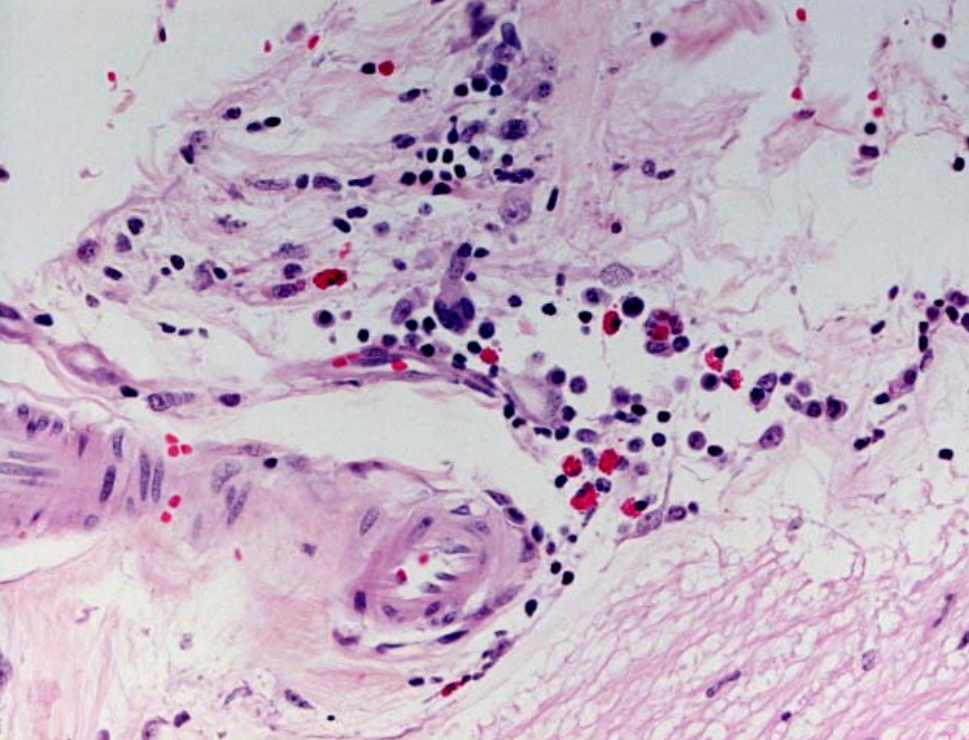
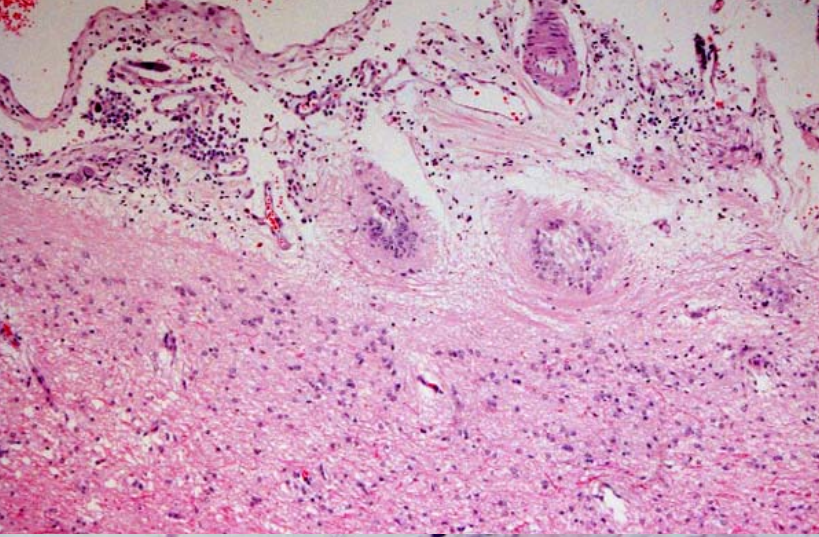


Case 8.1 – Dog. Lesions as depicted found in the brain and spinal cord.

Exercise –

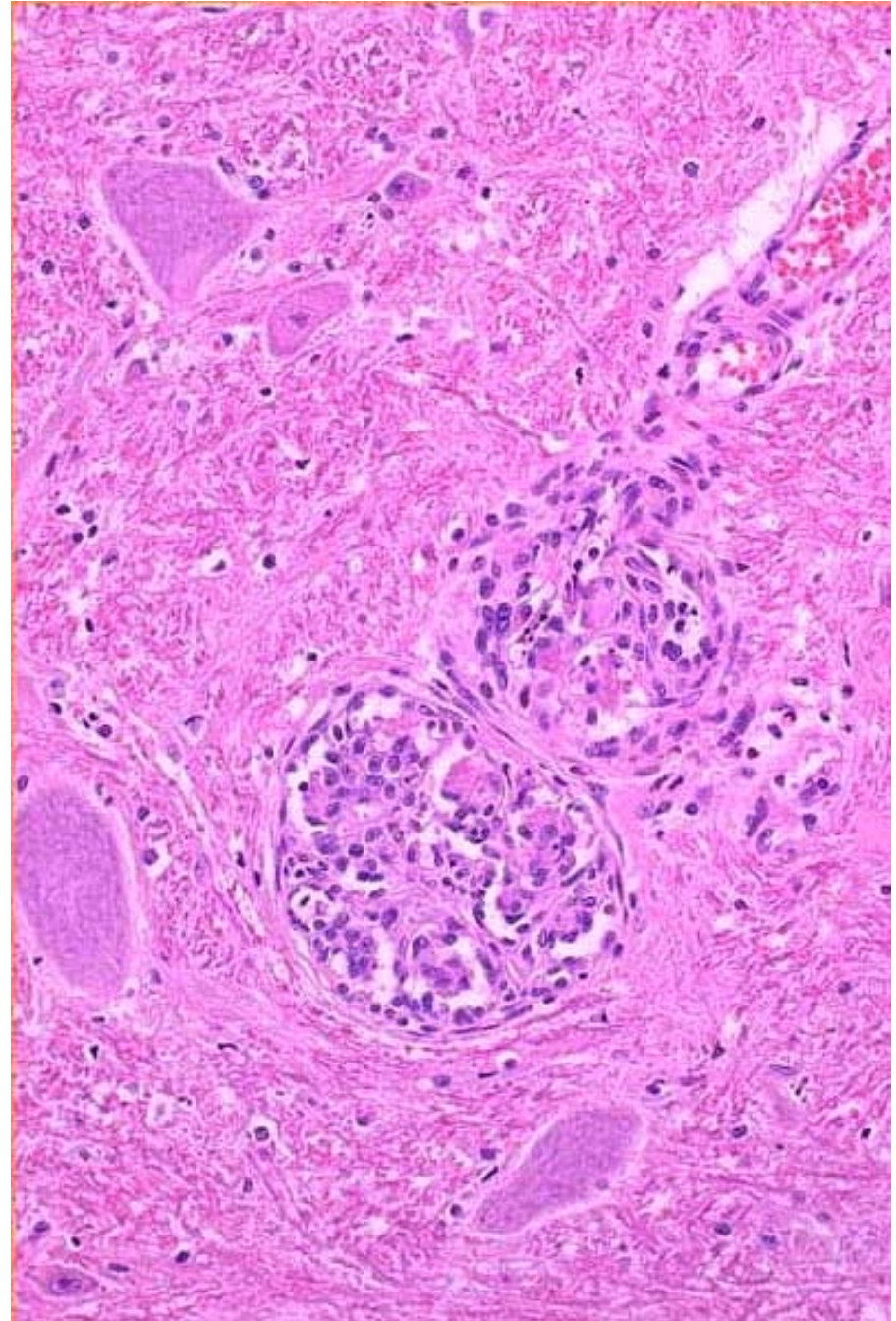
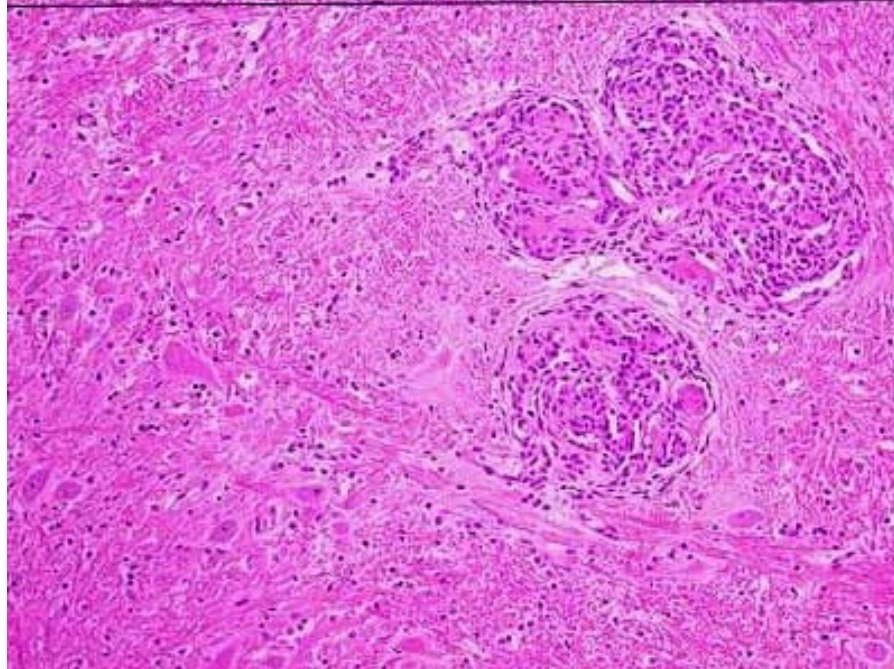
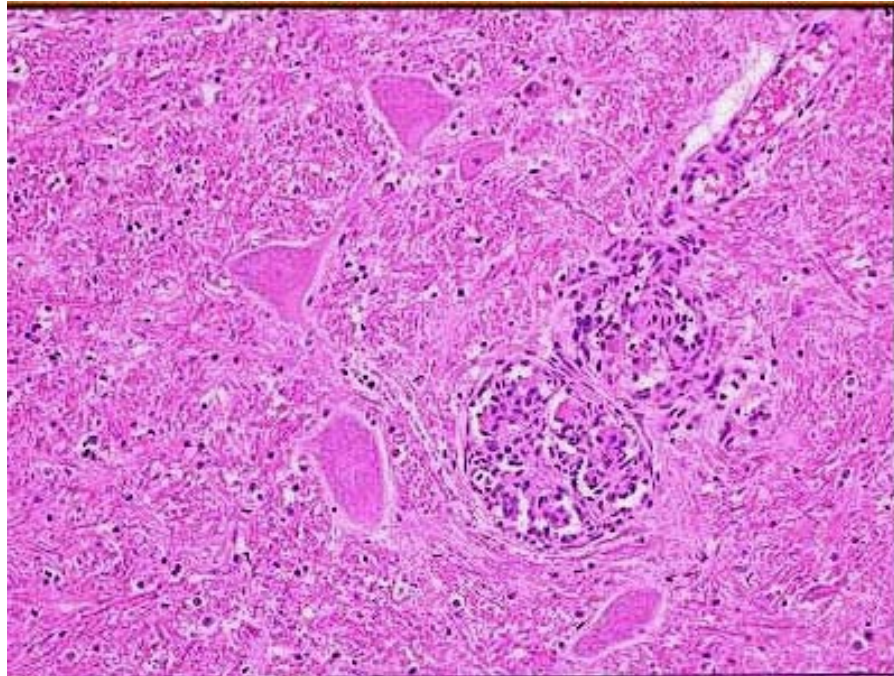
- 1) – Summarise the changes you see in the three images**
- 2) – Make an MDx**
- 3) – Name the probable specific disease and indicate it's distinguishing features**

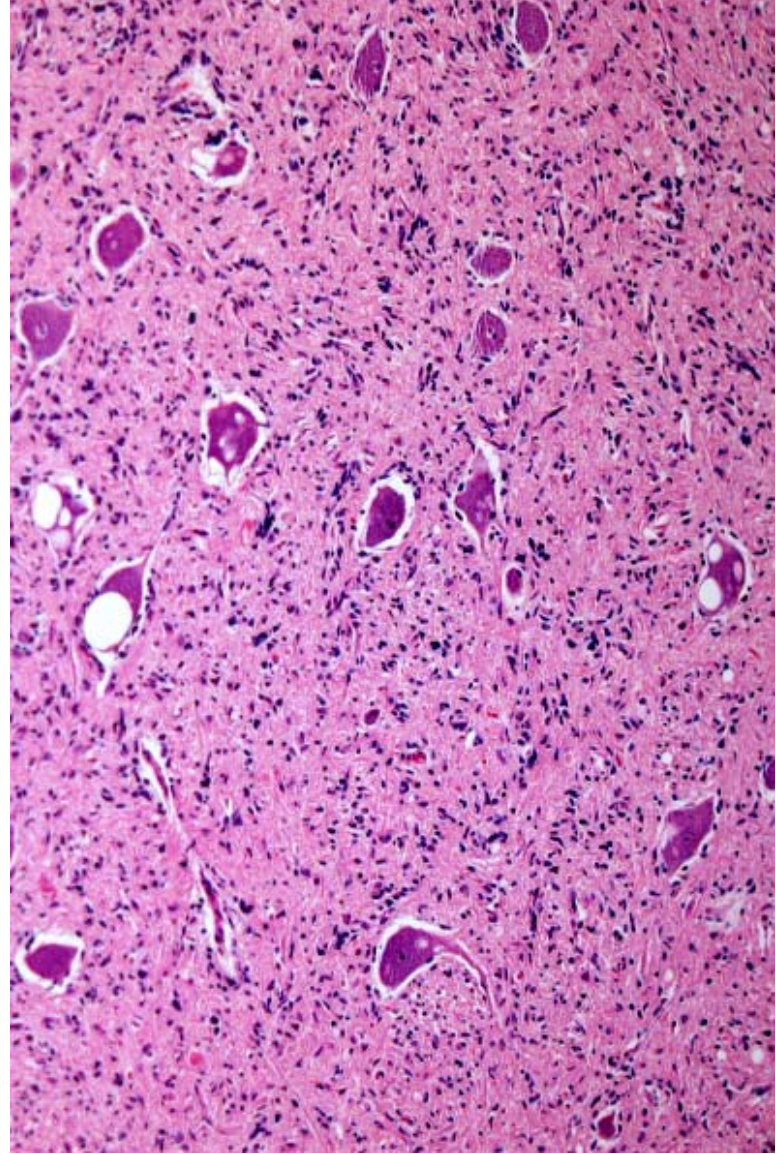
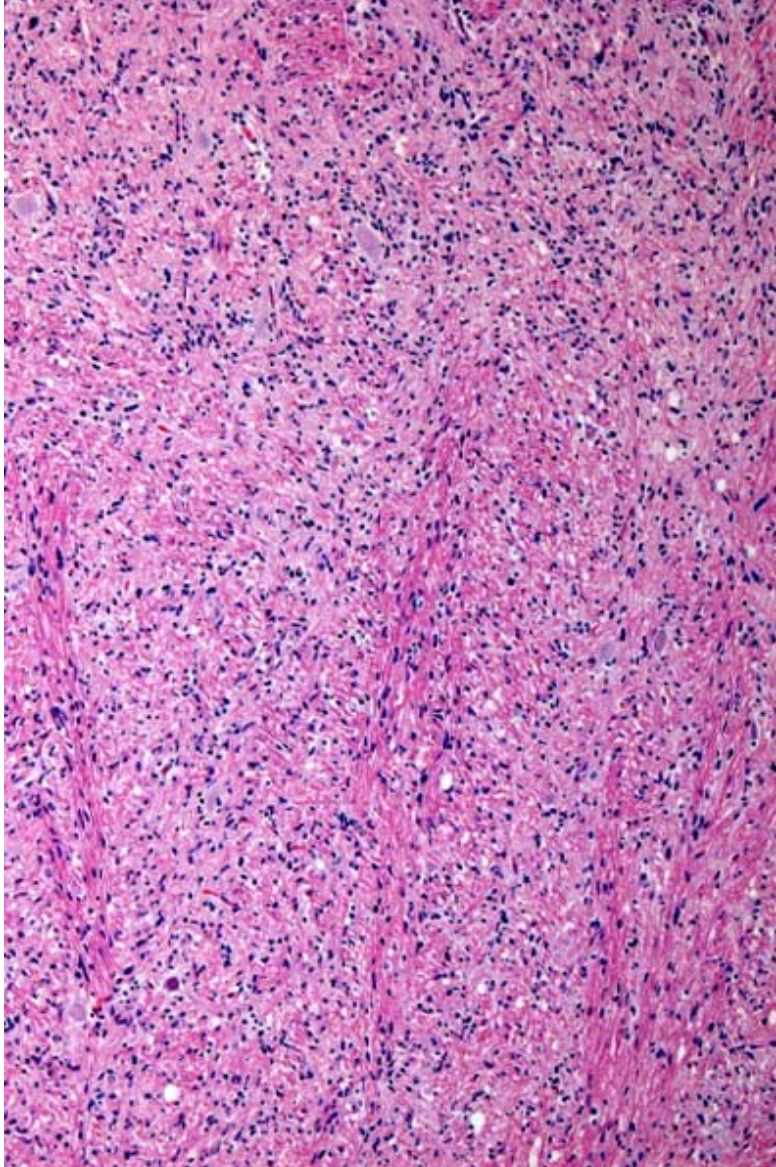




Case 8.2 – Brainstem of a horse – there was extensive involvement of the meninges by the process illustrated. Exercise –

- 1)– Describe the abnormalities evident**
- 2) – Give an MDx**
- 2) – Suggest a major aetiologic possibility.**

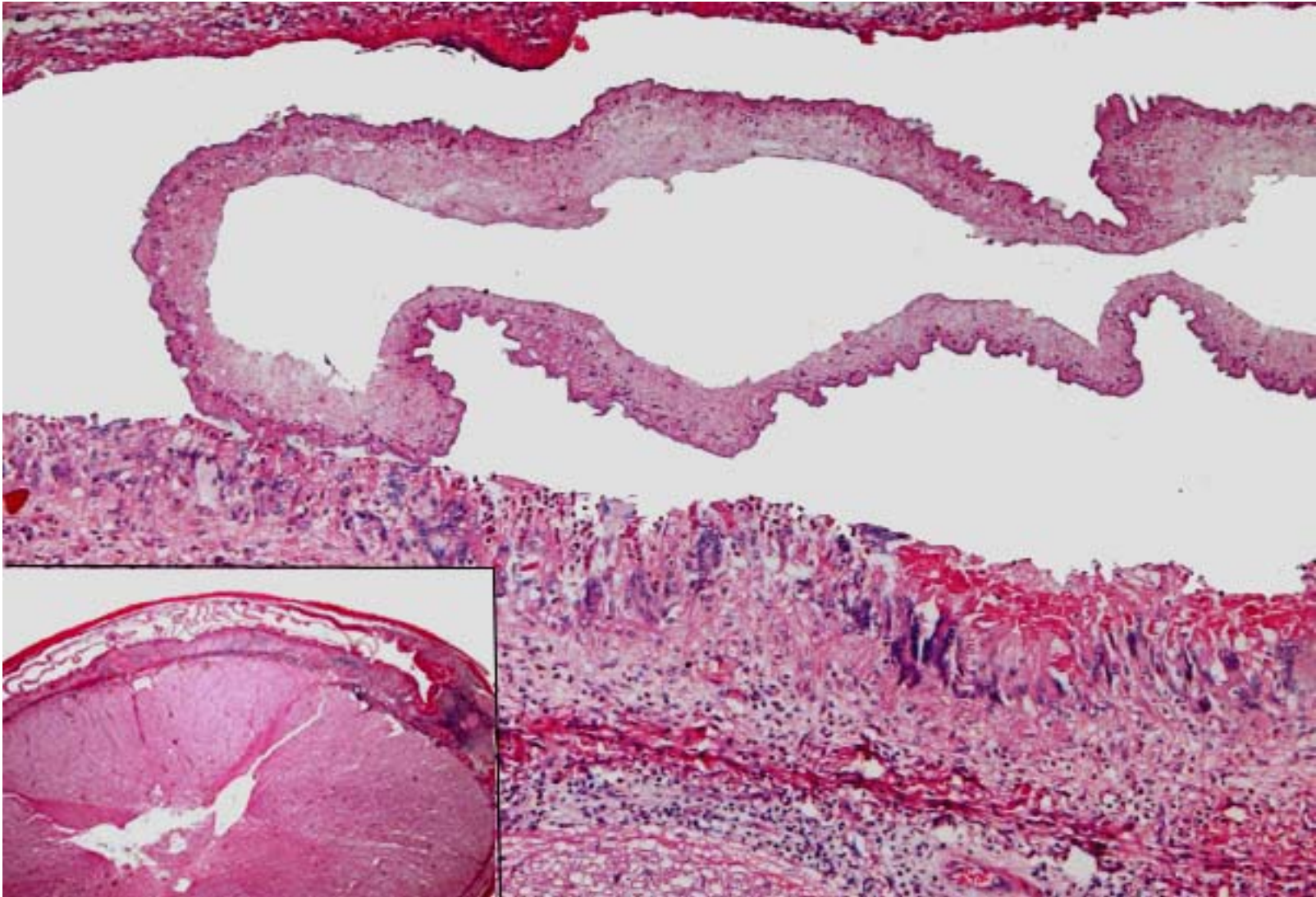




Case 8.4 – Aged dog. The lesion depicted was extensive in grey and white matter from the cerebrum to the caudal brainstem. Neurons shown on the right were in the motor nucleus of CN5.

Exercise –

- 1) – Describe in general terms the abnormal features illustrated**
- 2) – Identify the basic pathologic processes evident**
- 3) – Comment on the neuronal changes**
- 4) – Suggest a diagnosis**



Case 8.5 – Spinal cord of a sheep. Focal lesion

Exercise –

- 1)– Summarise the changes seen**
- 2) – Give an MDx.**
- 3) – Give a differential aetiologic Dx.**