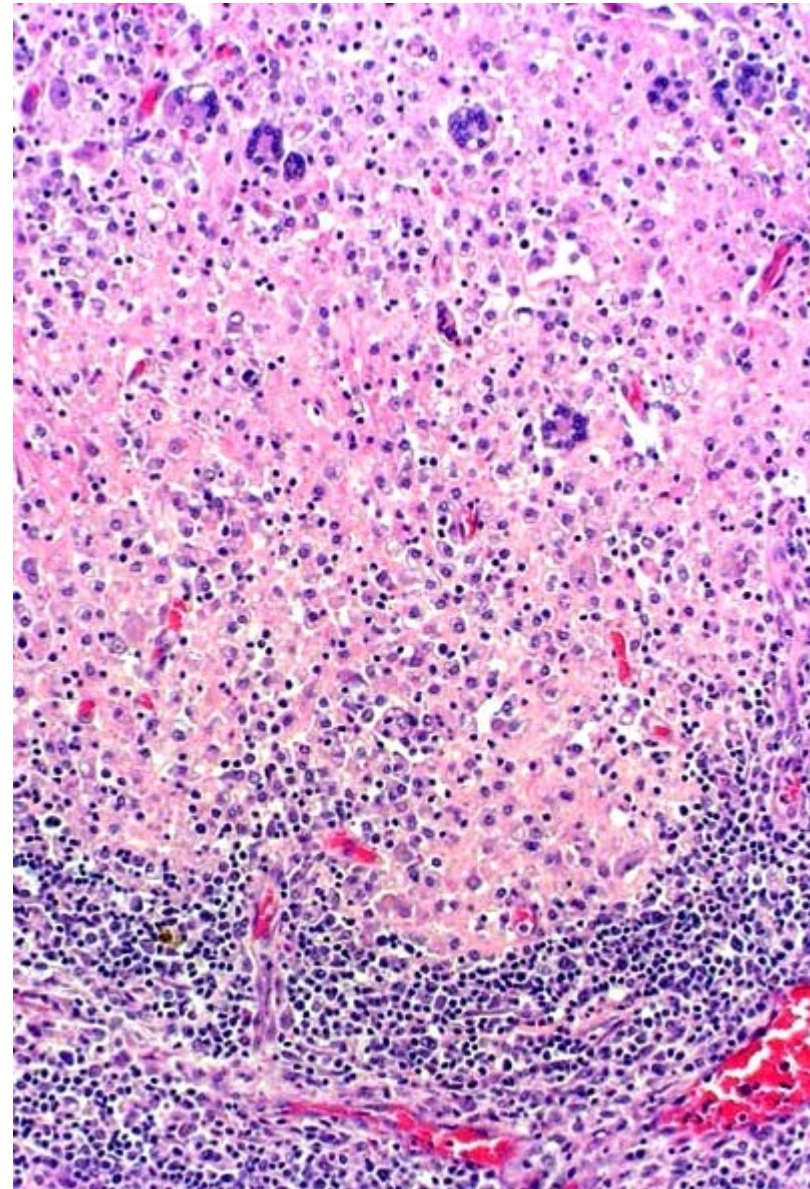


**Case 7.1 –Thalamus of a horse - the lesion was confined to this region.**

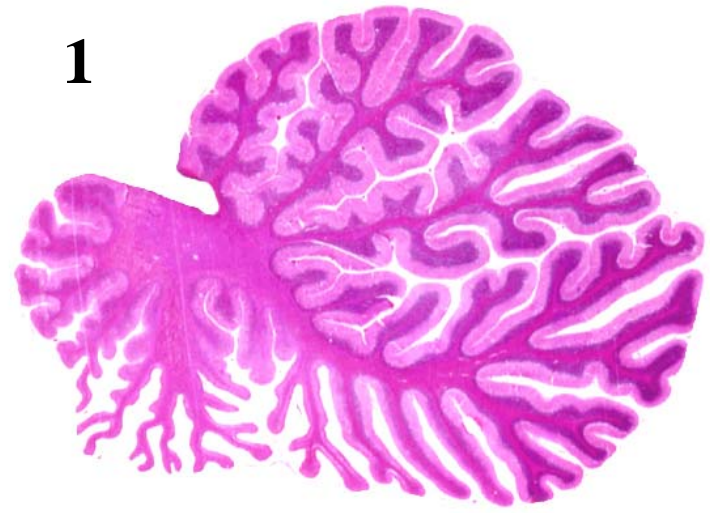
**Exercise –**

- 1) – Describe the changes you see in the three images**
- 3) – Make an MDx and give the likely aetiology**

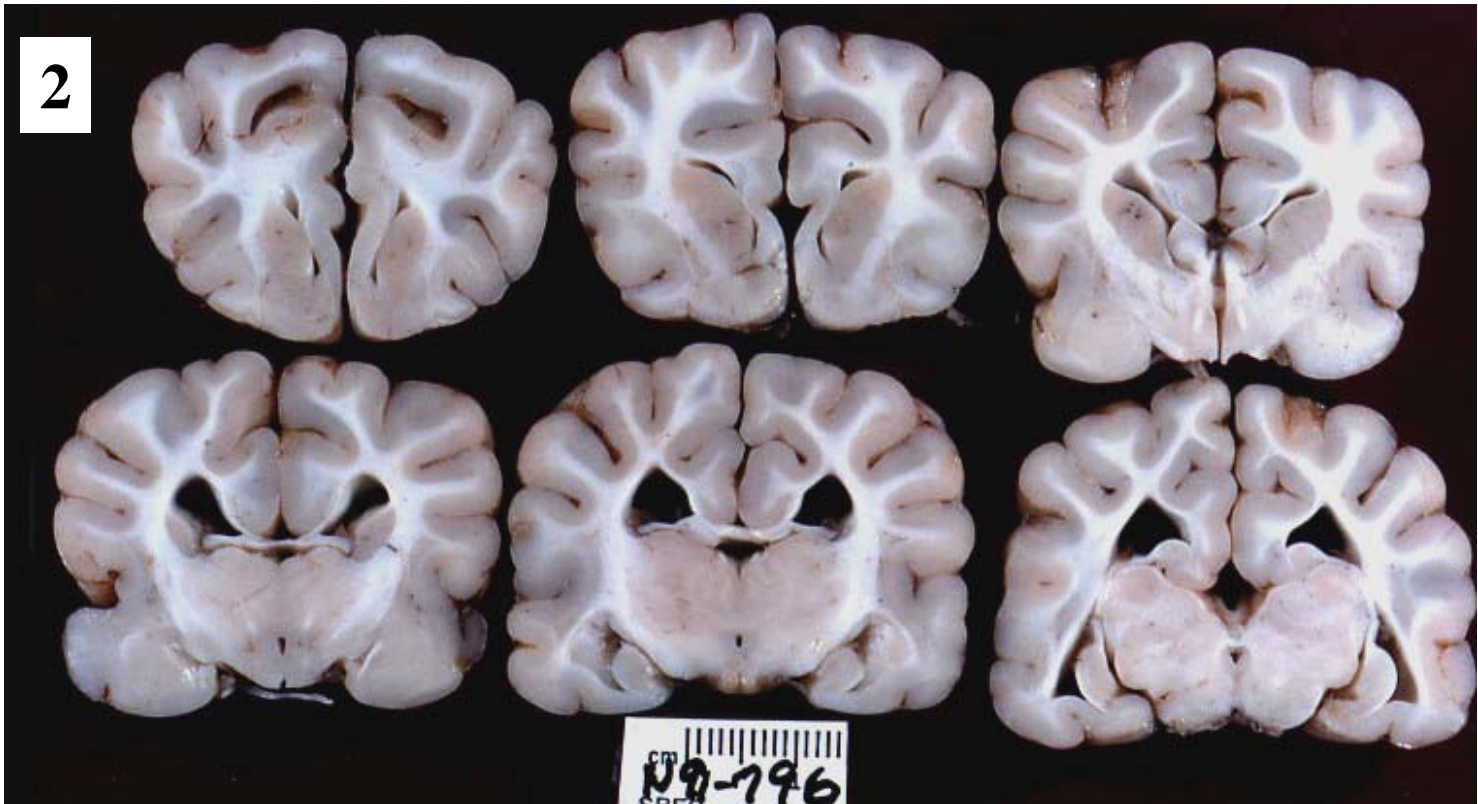




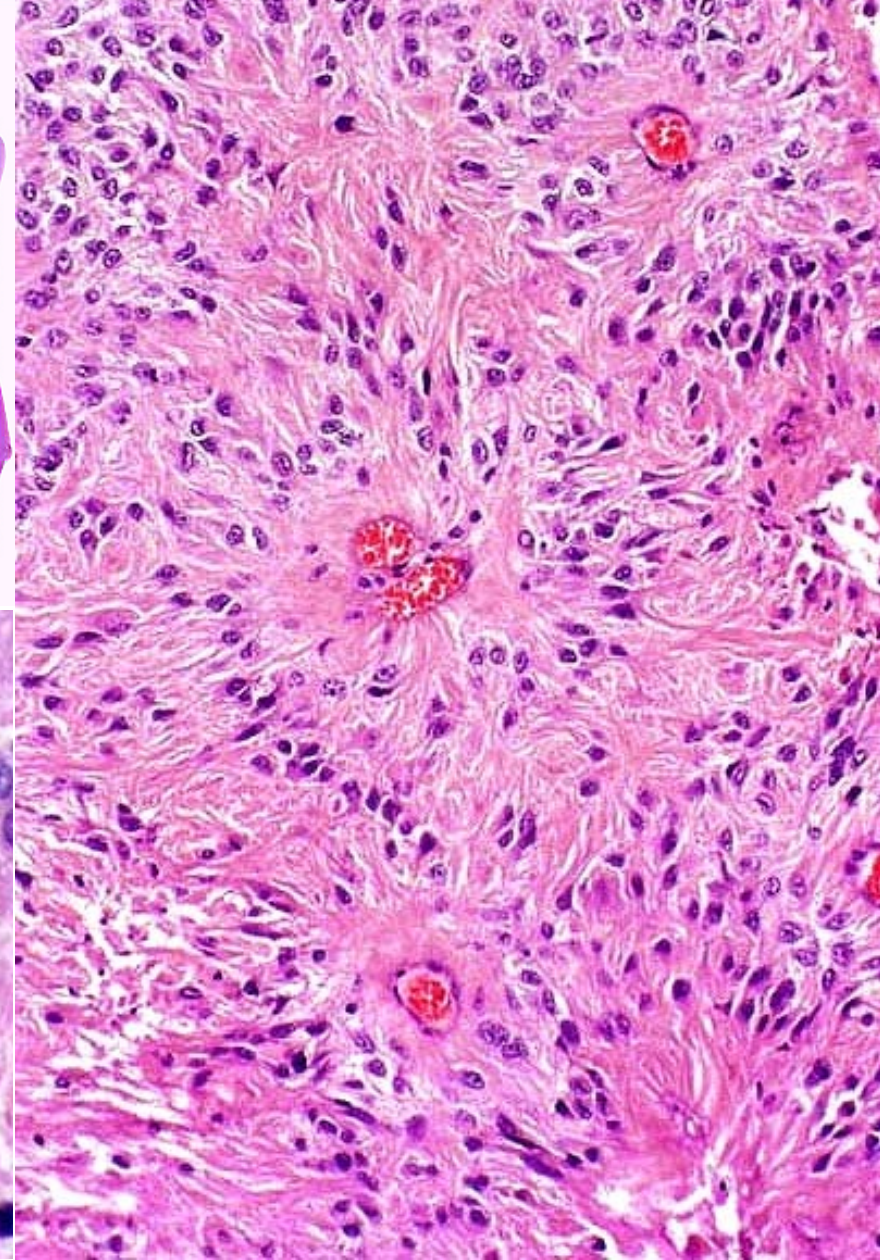
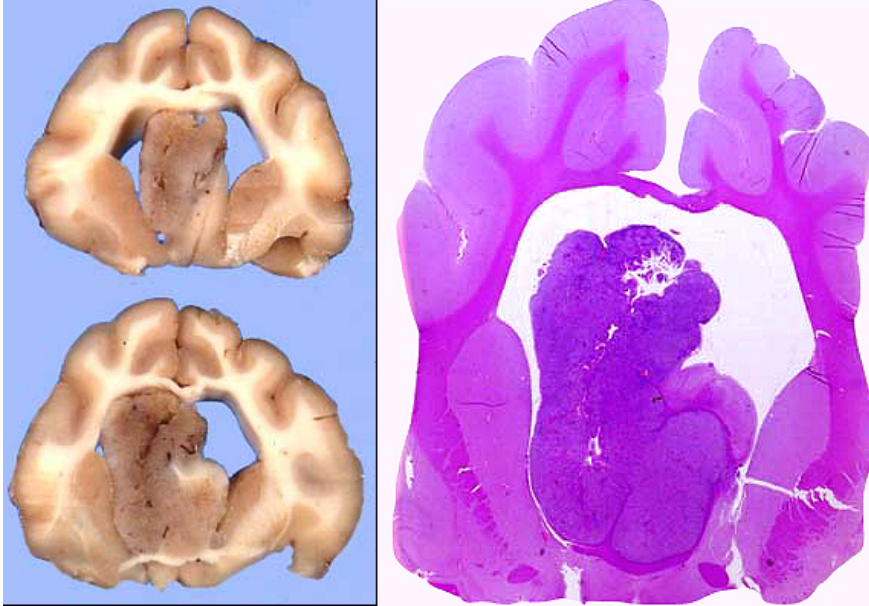
1



2





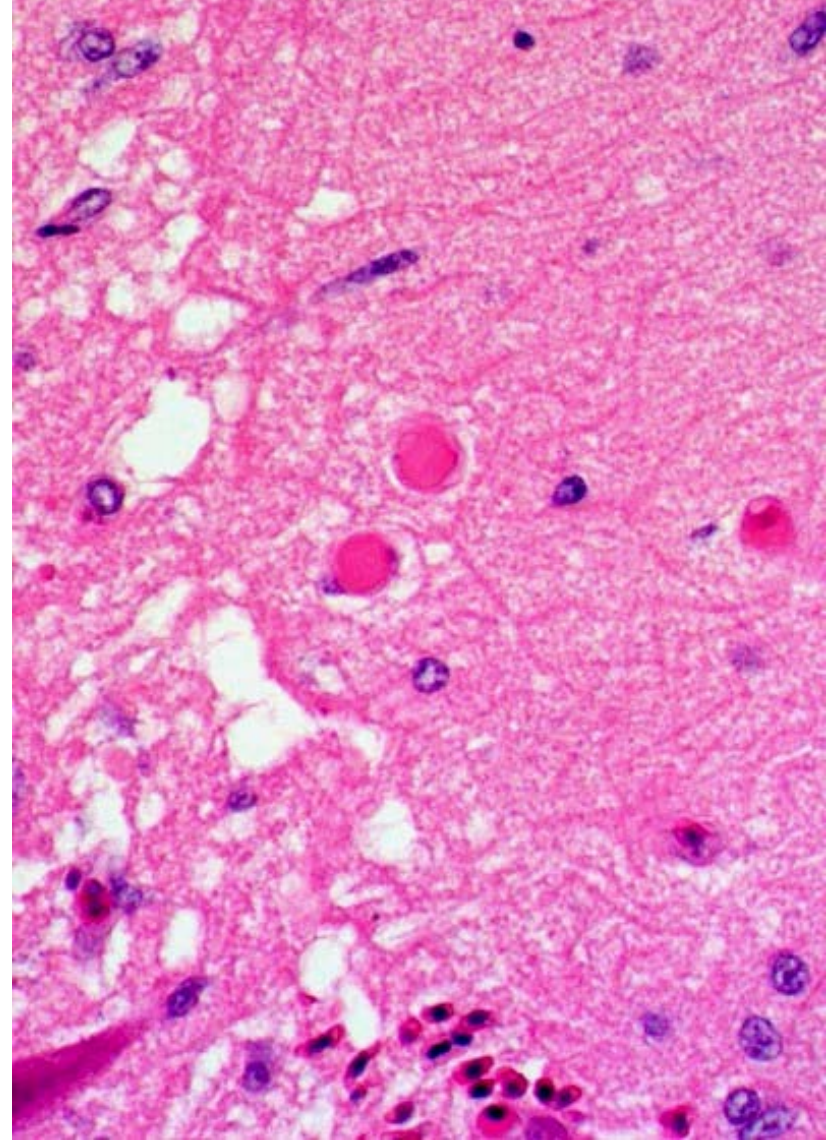
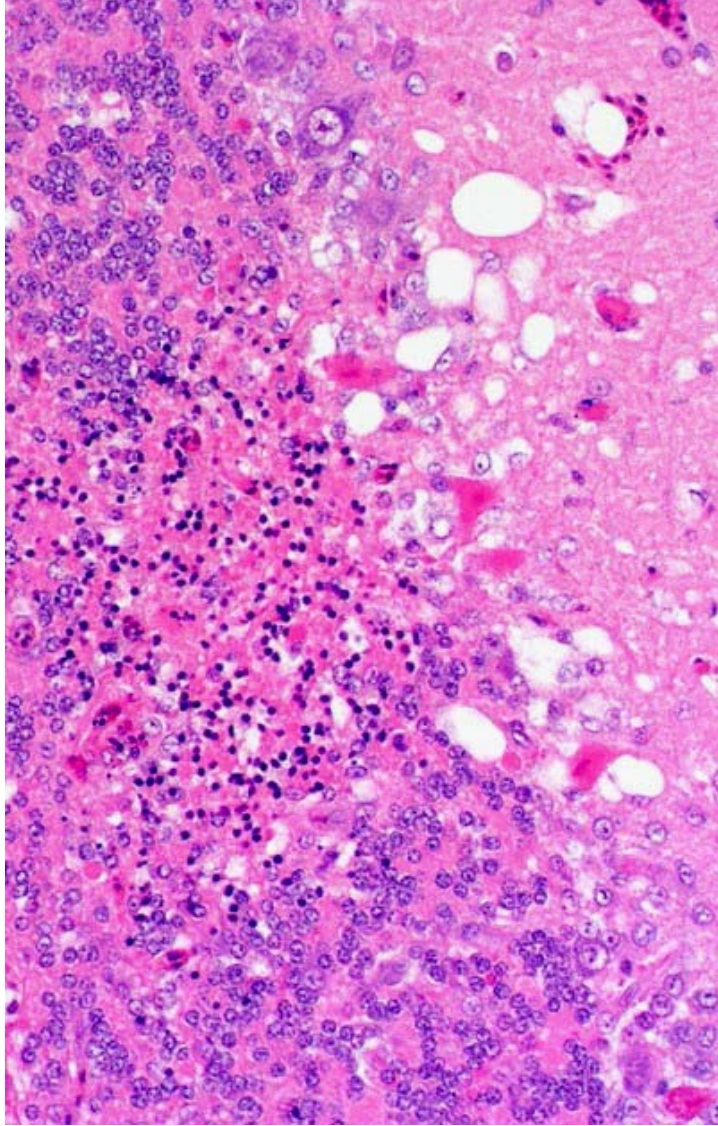


**Case 7.3 –Samples from a cat**

**Exercise –**

- 1) – Describe the gross and histologic changes**
- 2) – Give an interpretation of the basic pathologic process and make an MDx.**





**Case 7.4 –Brain of a chicken. One of many focal lesions in this region of the brain.**

**Exercise –**

- 1) – Describe the significant features illustrated**
- 2) – Identify the pathologic processes evident**
- 3) – Give an MDx**
- 4) - Suggest a likely aetiology**



**Case 7.5 – Cerebrum of an adult dog. The lesion was confined to the area shown.**

**Exercise –**

- 1)– Describe the changes seen**
- 2) – Make an MDx**
- 3) – Indicate features to consider in assessing canine distemper or GME as possible diagnoses.**

