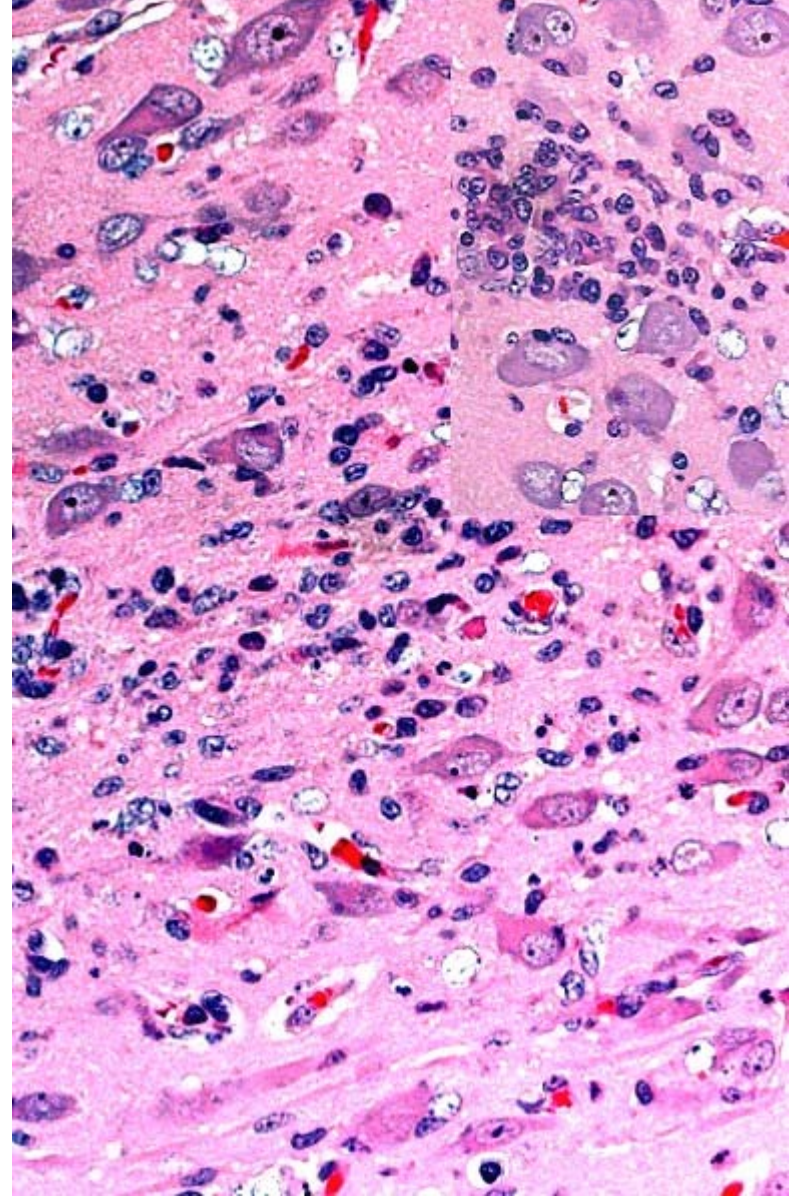
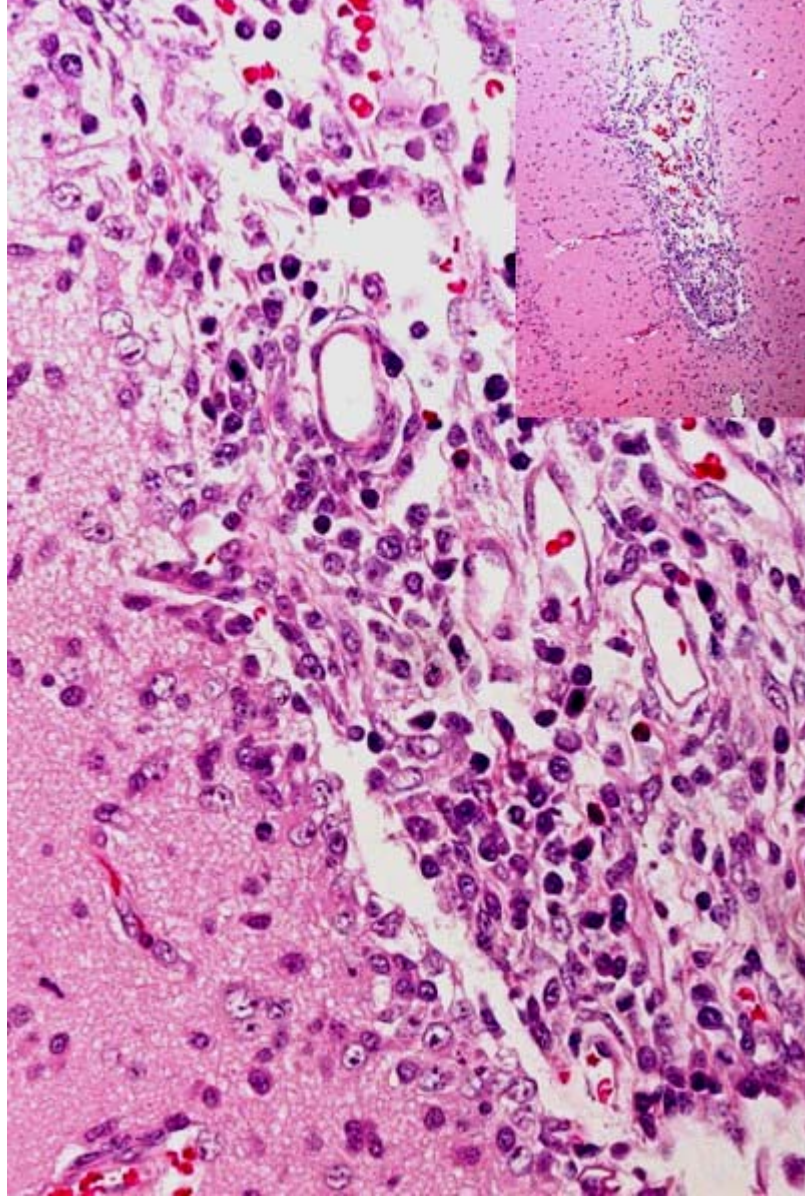


**Case 2.1 – Fields from the caudal brainstem - unspecified**

**Exercise –**

- 1) Describe the dominant morphologic feature**
- 2) Comment on the type of disease process that might be indicated**
- 3) Suggest a likely Dx if the subject were (a) a dog or (b) a bovine**

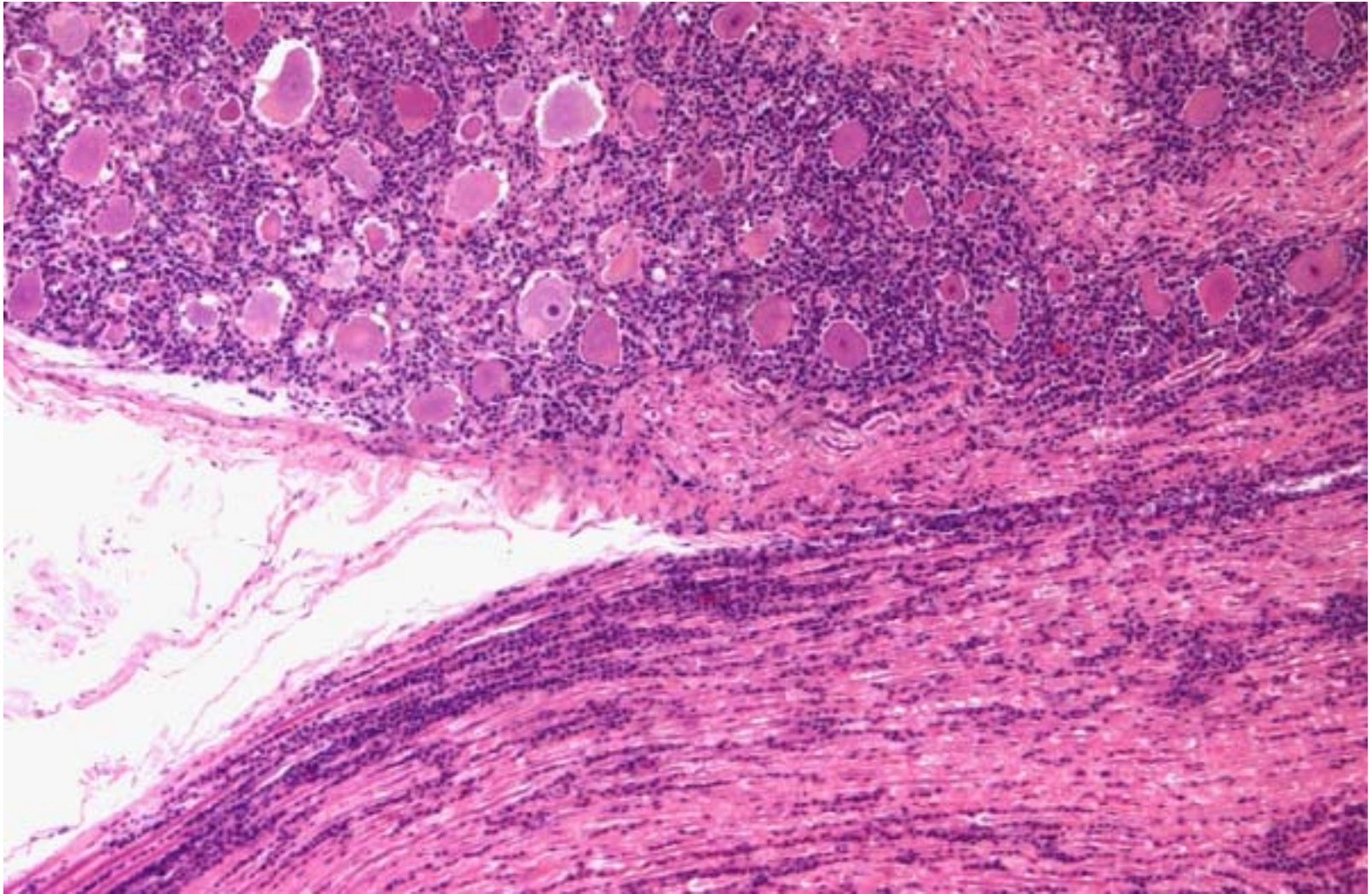


**Case 2.2 – Cerebrum (cortex) from a neonatal pig**

**Exercise-**

- 1) Indicate the abnormalities evident in a descriptive sense and then give an MDx.**
- 2) What class of agent is likely to cause such a lesion**
- 3) Suggest two possible specific aetiologies and any further findings or historical details which would help refine the diagnosis**

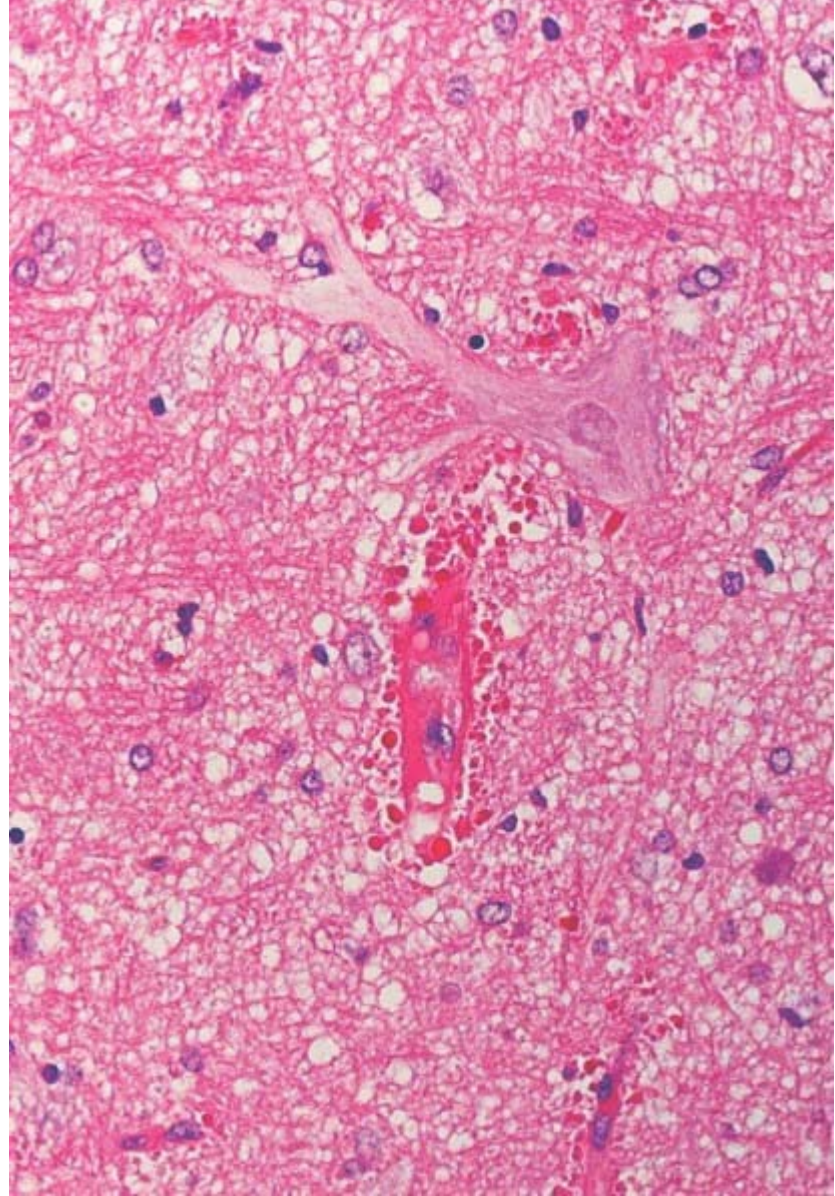
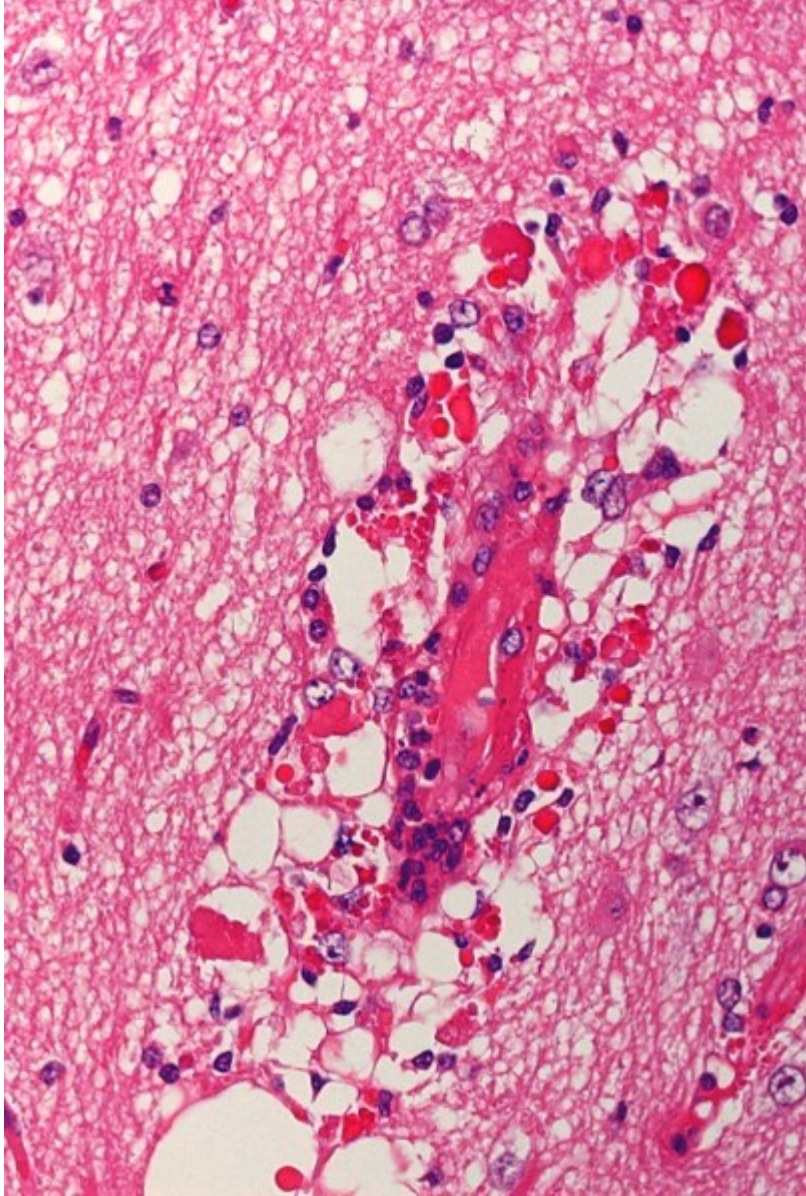




**Case 2.4 – Paravertebral tissue from a cat with clinical megaloesophagus and constipation.**

**Exercise –**

- 1) Identify the major structures depicted**
- 2) Suggest other anatomic sites to examine, given the history**
- 3) Describe the major abnormalities**
- 4) Suggest the possible pathologic processes**
- 5) Name the disease likely to be present**



**Case 2.5 – midbrain – representative fields of a widely distributed lesion - unspecified**

**Exercise –**

- 1) Name three descriptive features of the lesion illustrated**
- 2) Give an assessment of the duration of the process**
- 3) Indicate the major pathologic process operating**
- 4) Name any specific diseases in which such lesion might be a prominent feature.**