

STUDY 1

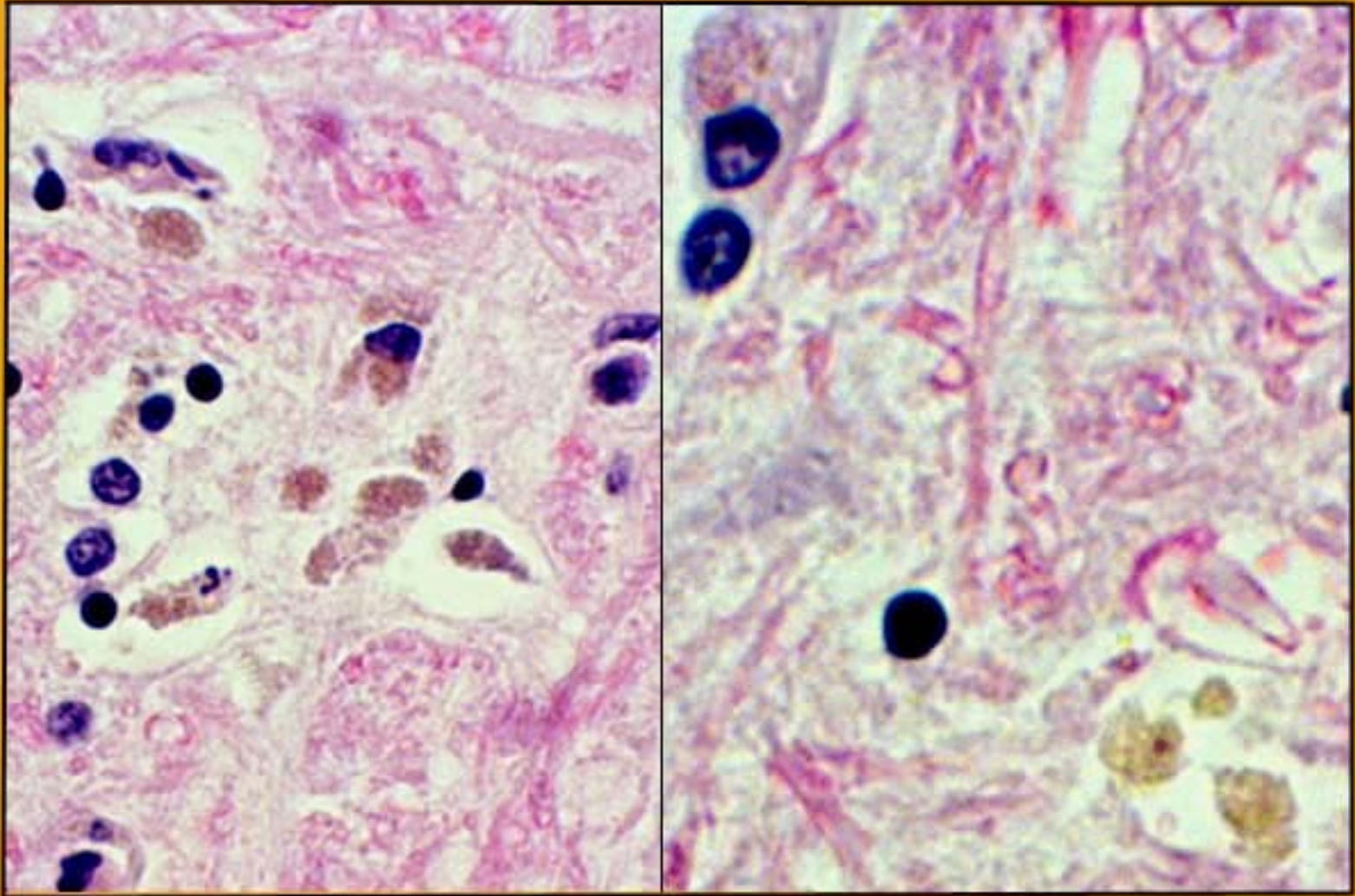
**IN THIS STUDY CONSISTING OF 10 EXERCISES
YOUR TASK IS TO IDENTIFY AND INTERPRET
REACTIONS BY VARIOUS COMPONENTS OF
NEURAL TISSUE**

**THE FOCUS IS ON BASIC NEUROPATHOLOGY, INITIALLY
REGARDLESS OF CLINICAL DATA AND SPECIES OF ANIMAL**

CLICK NOW TO MOVE TO IMAGES

IDENTIFY AND INTERPRET THREE SIGNIFICANT CHANGES IN
THESE TWO RELATED IMAGES (CLICK FOR SECOND IMAGE)

EXERCISE 1 OF 10

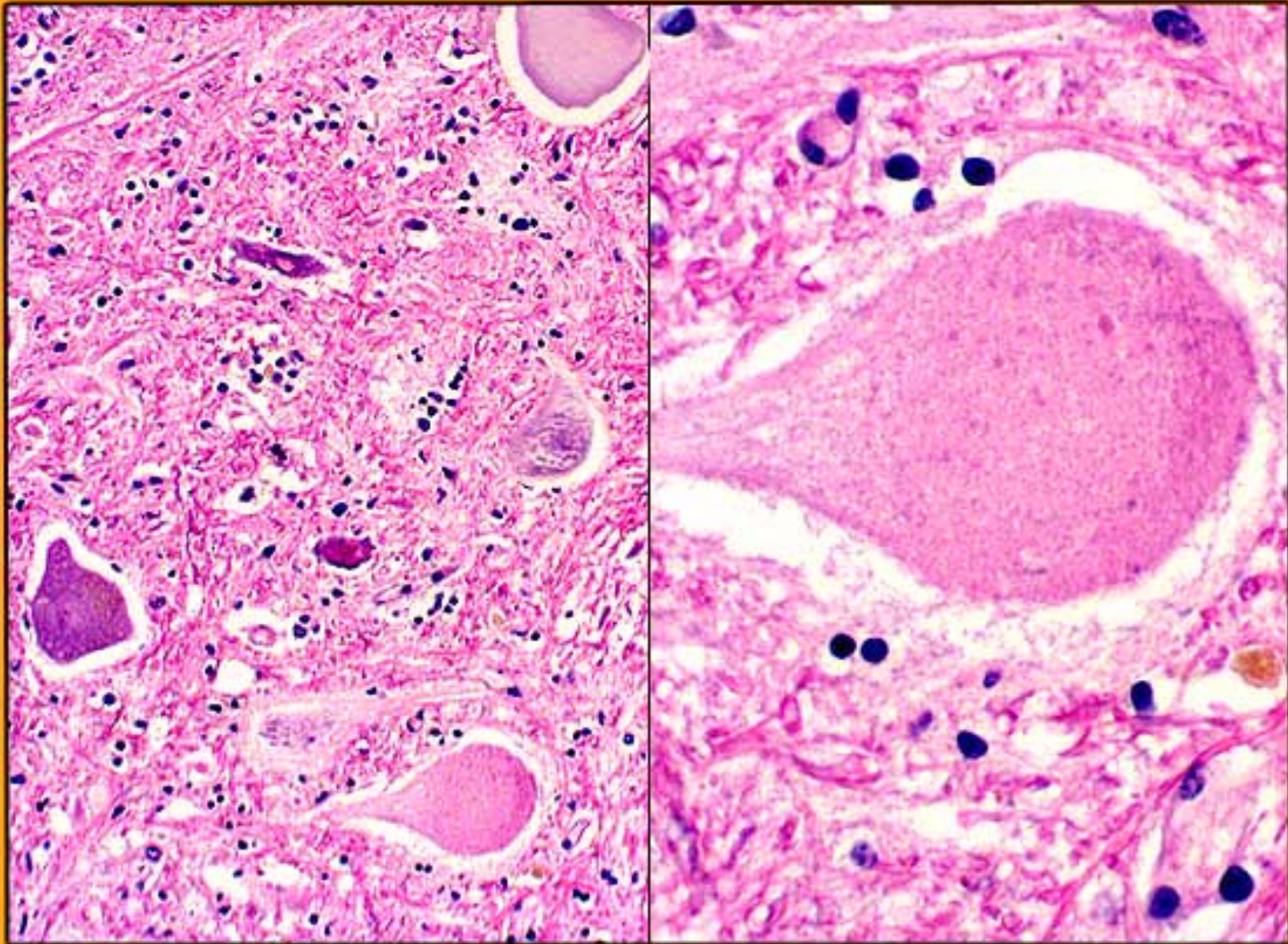


© 2001 College of Veterinary Medicine, Cornell University

[LINK](#)

IDENTIFY AND INTERPRET THREE SIGNIFICANT CHANGES IN
THESE TWO RELATED IMAGES (CLICK FOR SECOND IMAGE)

EXERCISE 1 OF 10

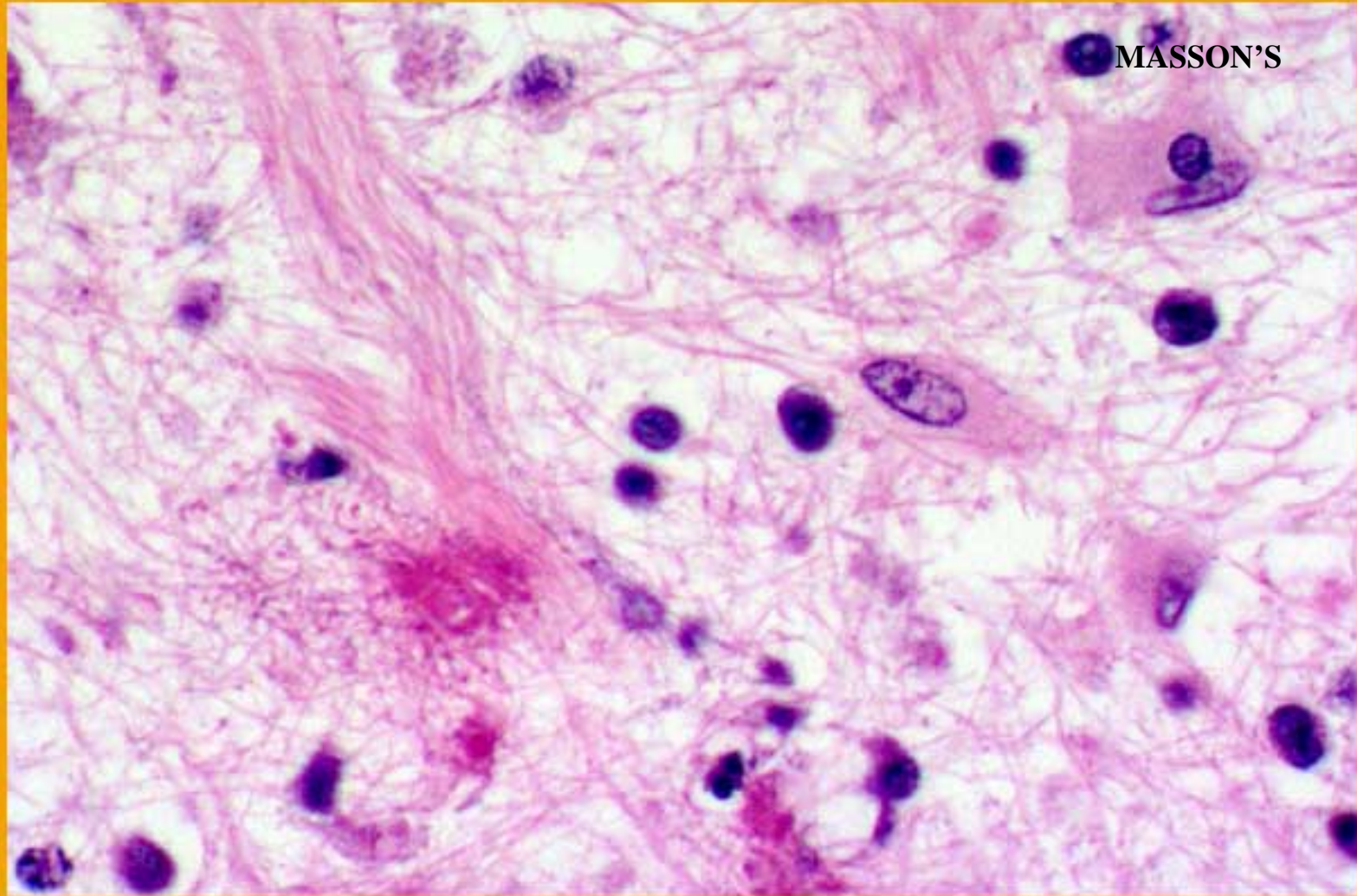


© 2001 College of Veterinary Medicine, Cornell University

[LINK](#)

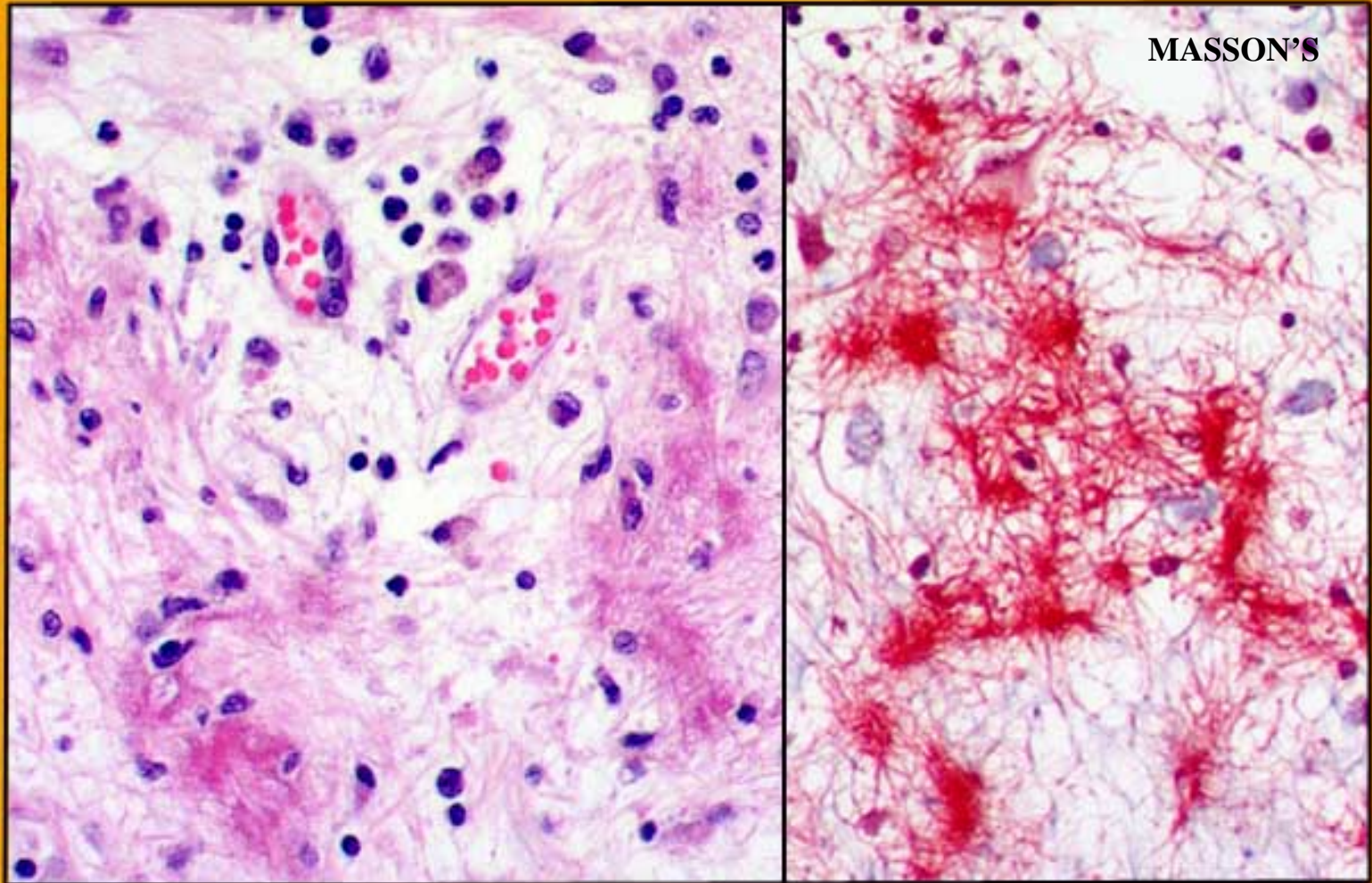
EXERCISE 2 OF 10.

IDENTIFY AND INTERPRET THREE SIGNIFICANT CHANGES IN THESE TWO RELATED IMAGES (CLICK FOR SECOND IMAGE)



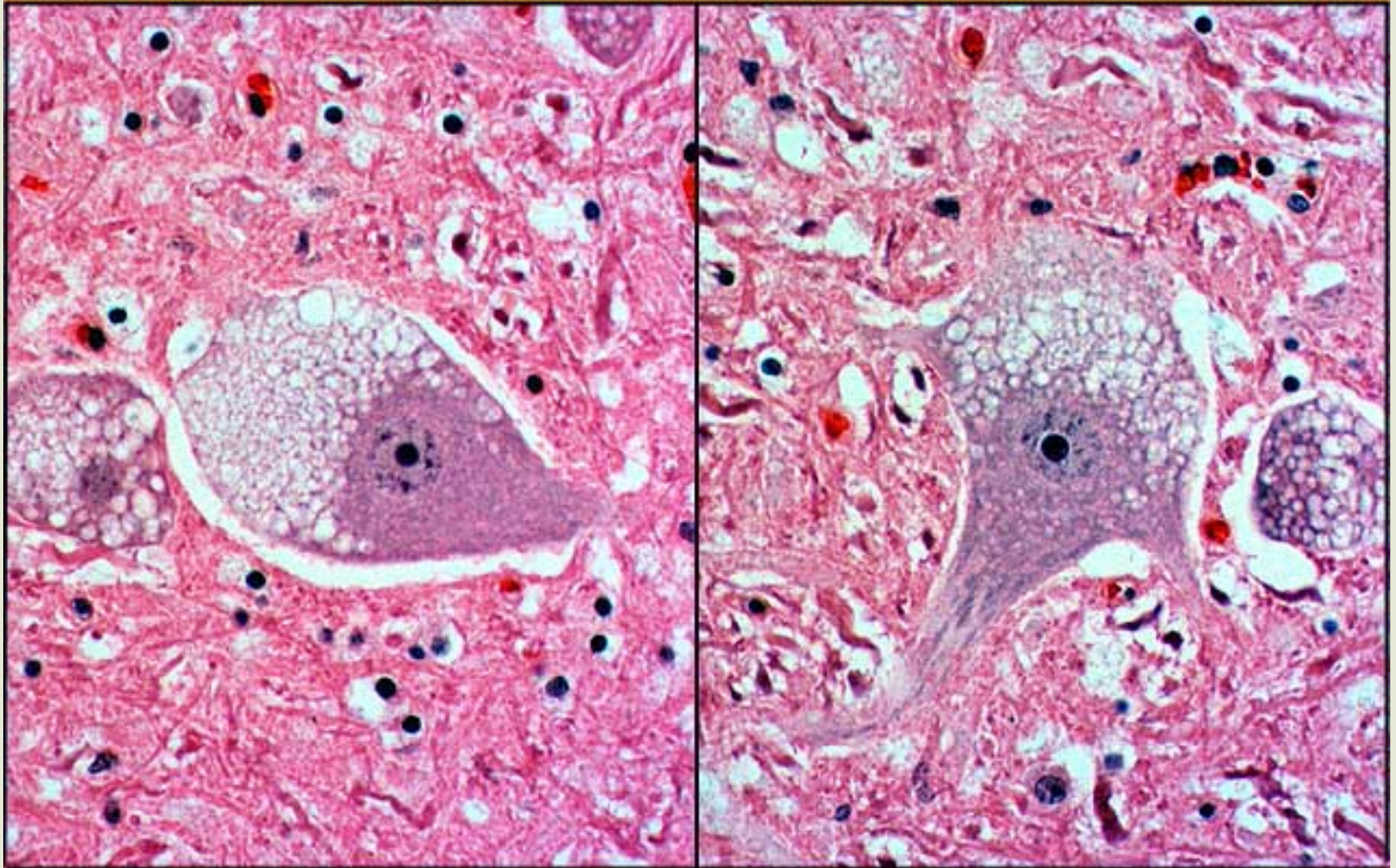
EXERCISE 2 OF 10.

IDENTIFY AND INTERPRET THREE SIGNIFICANT CHANGES IN THESE TWO RELATED IMAGES (CLICK FOR SECOND IMAGE)



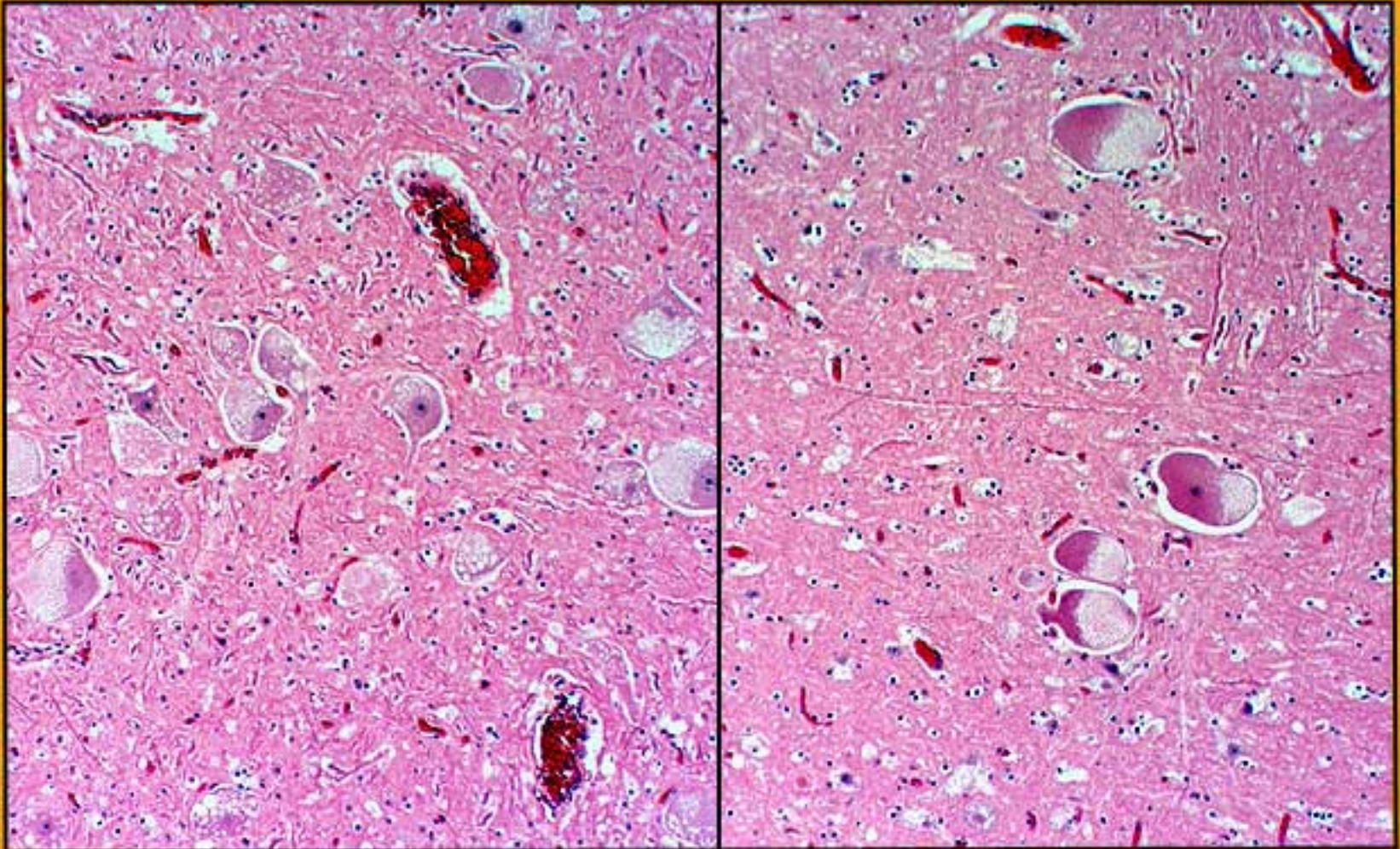
EXERCISE 3 OF 10.

IDENTIFY AND INTERPRET THE SIGNIFICANT CHANGES IN THESE TWO RELATED IMAGES (CLICK FOR SECOND IMAGE)



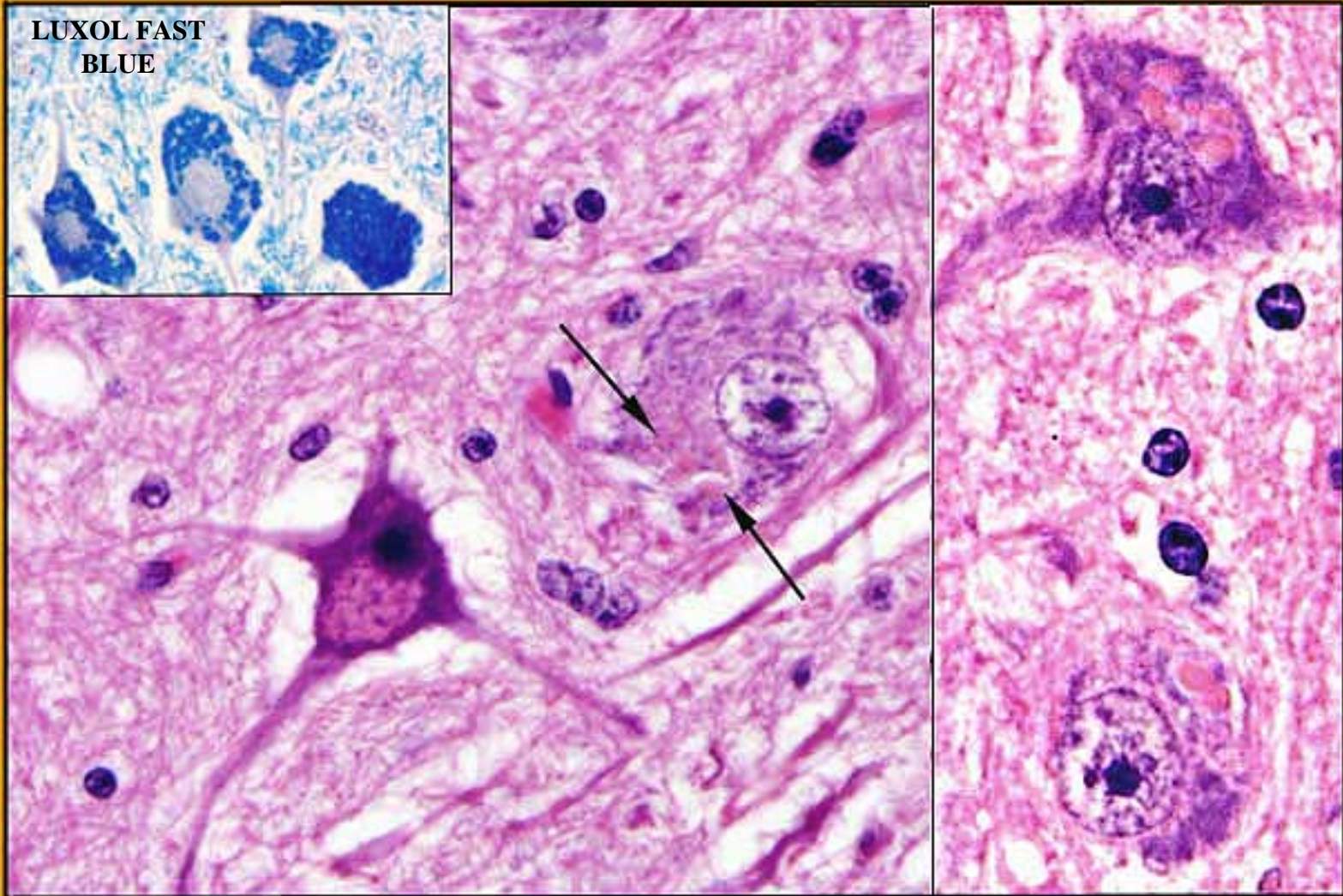
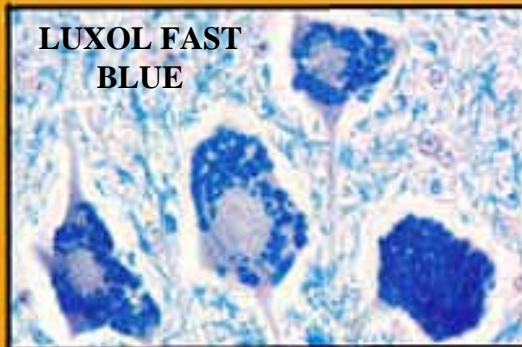
EXERCISE 3 OF 10.

IDENTIFY AND INTERPRET THE SIGNIFICANT CHANGES IN THESE TWO RELATED IMAGES (CLICK FOR SECOND IMAGE)



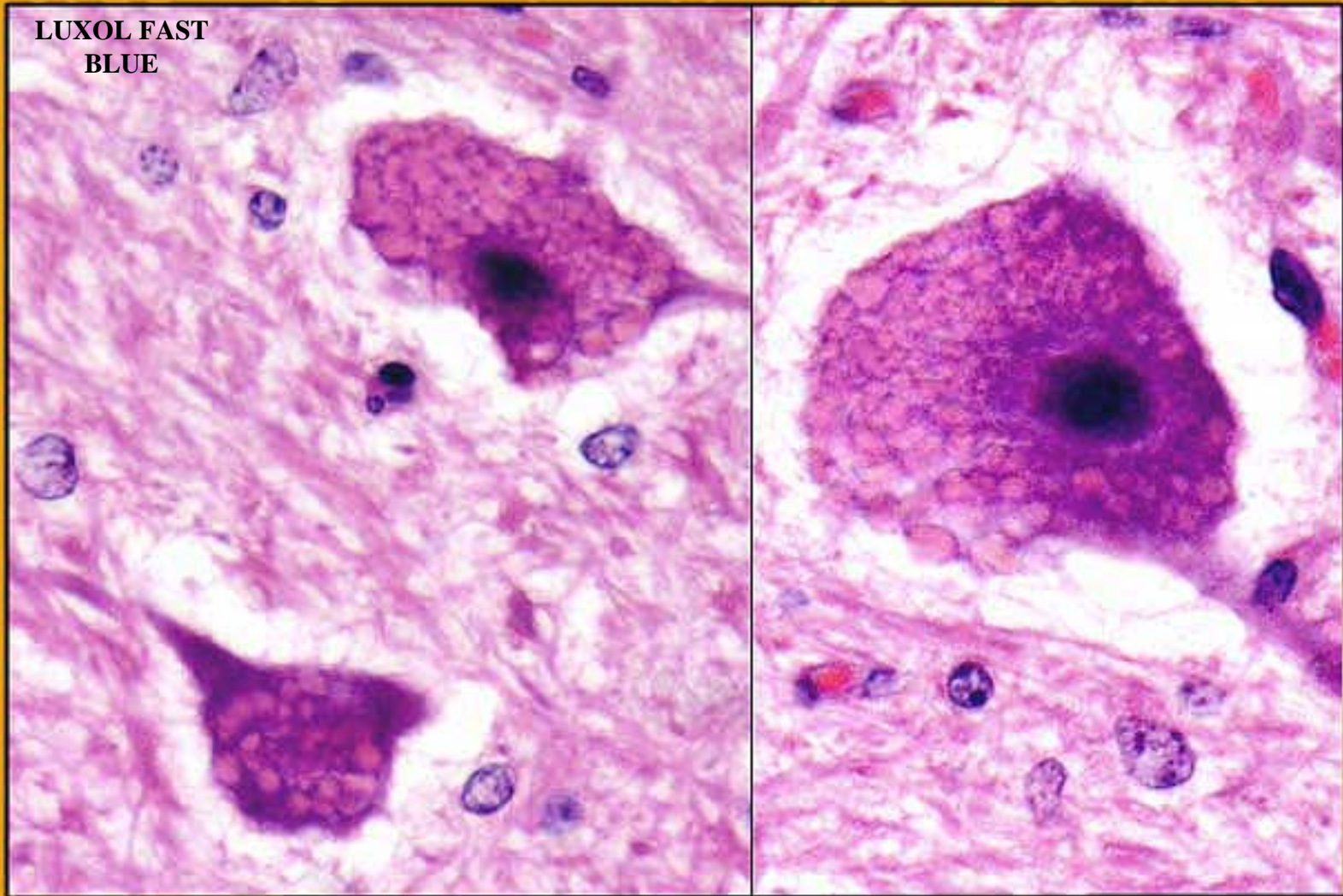
EXERCISE 4 OF 10.

IDENTIFY AND INTERPRET THE SIGNIFICANT CHANGES IN THESE TWO RELATED IMAGES (CLICK FOR SECOND IMAGE)



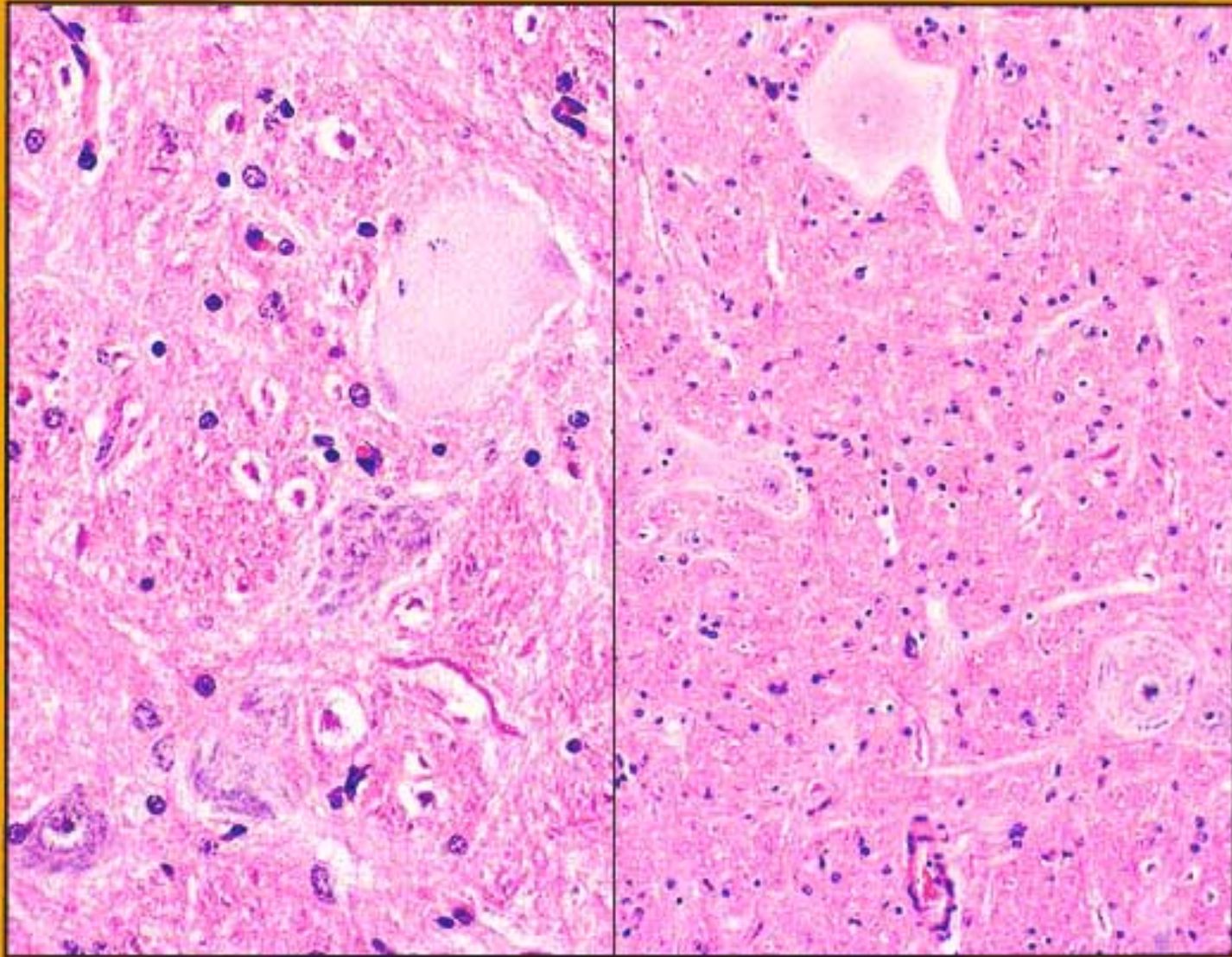
EXERCISE 4 OF 10.

IDENTIFY AND INTERPRET THE SIGNIFICANT CHANGES IN THESE TWO RELATED IMAGES (CLICK FOR SECOND IMAGE)



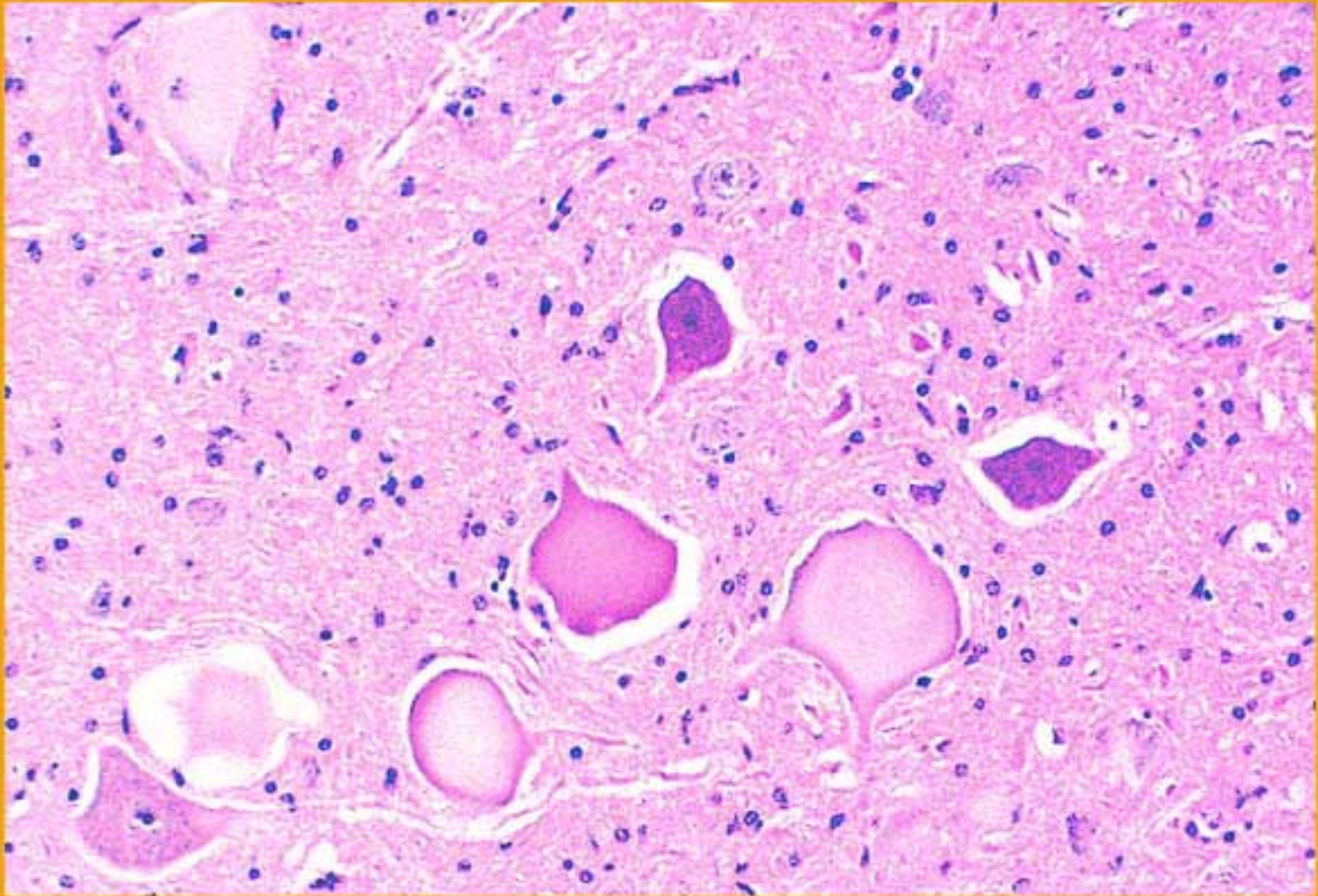
EXERCISE 5 OF 10.

IDENTIFY AND INTERPRET THE SIGNIFICANT CHANGES IN THESE TWO RELATED IMAGES (CLICK FOR SECOND IMAGE)



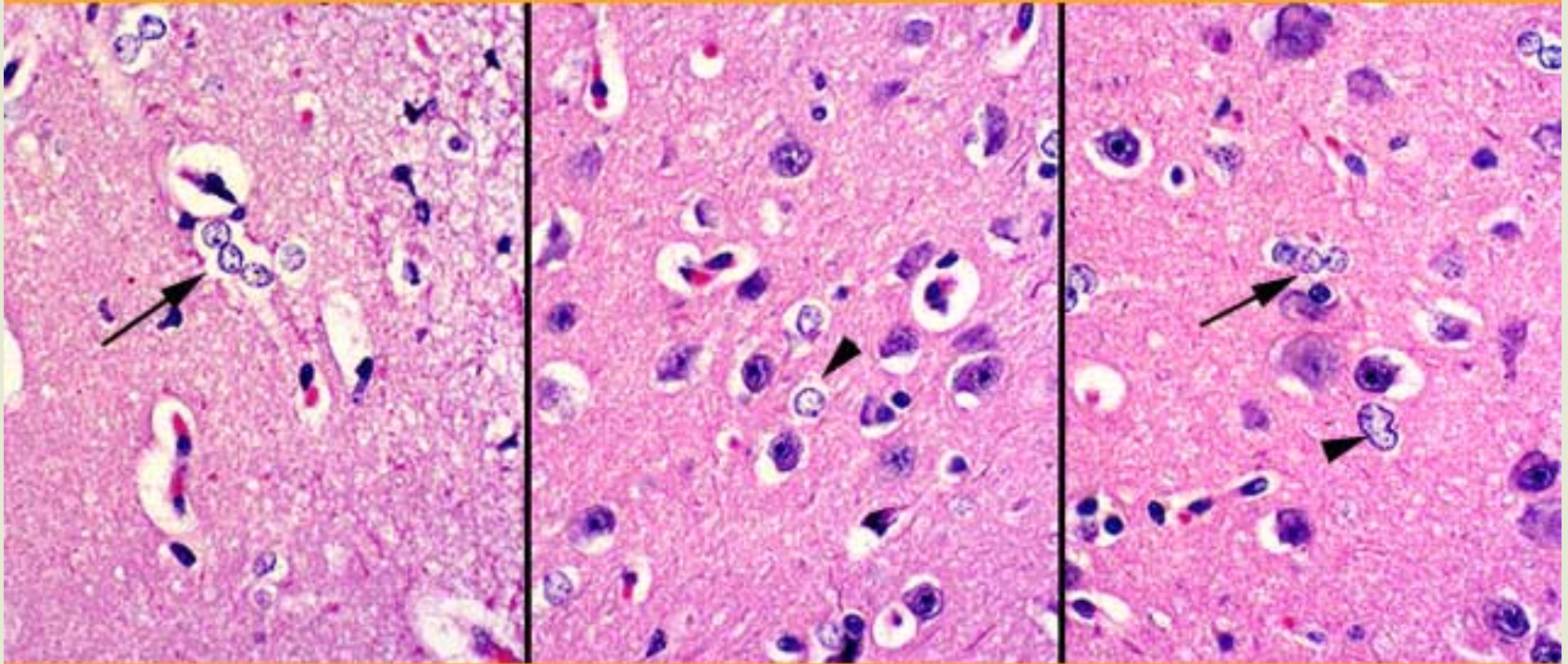
EXERCISE 5 OF 10.

IDENTIFY AND INTERPRET THE SIGNIFICANT CHANGES IN THESE TWO RELATED IMAGES (CLICK FOR SECOND IMAGE)



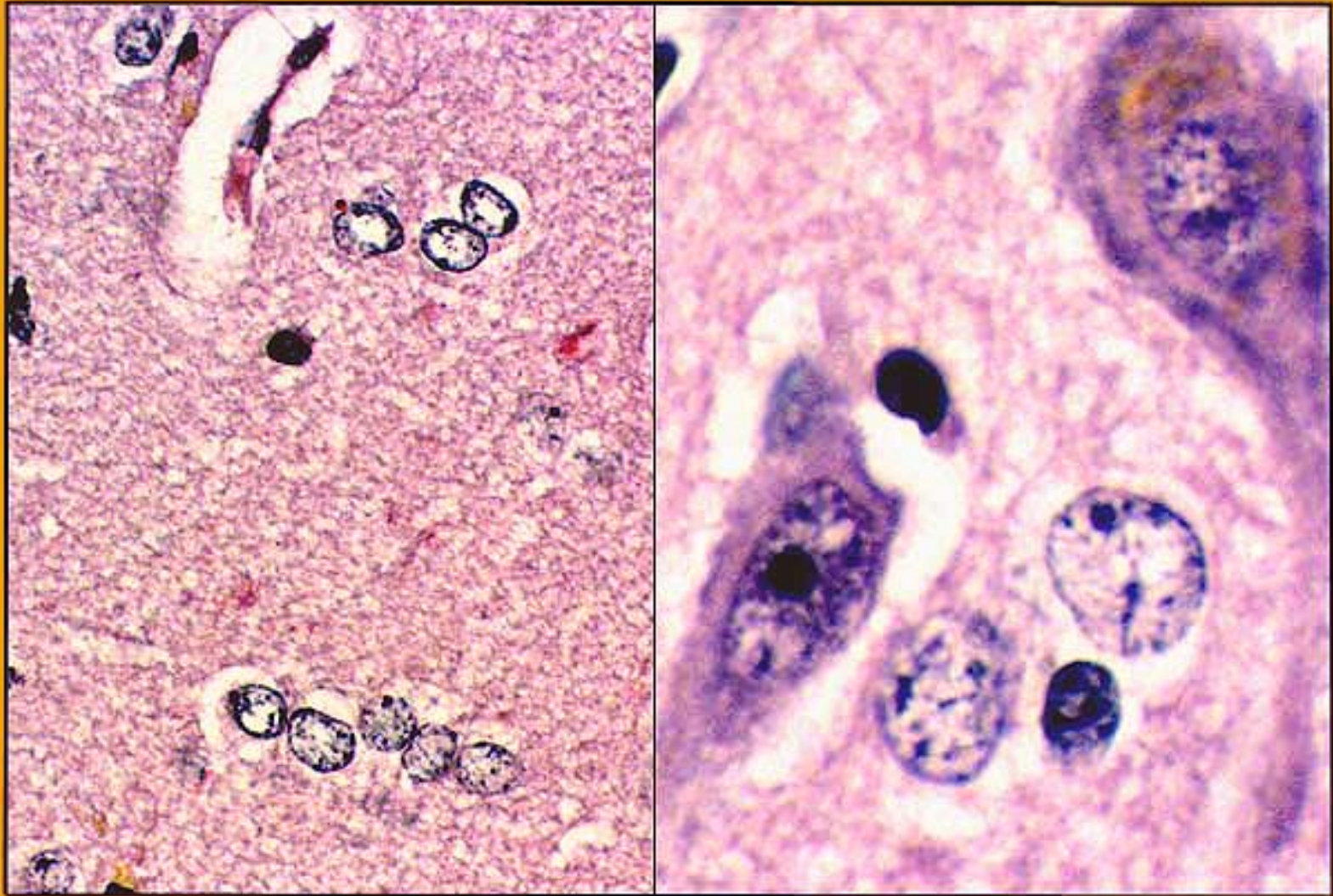
EXERCISE 6 OF 10.

IDENTIFY AND INTERPRET THE SIGNIFICANT CHANGES IN THESE TWO RELATED IMAGES (CLICK FOR SECOND IMAGE)



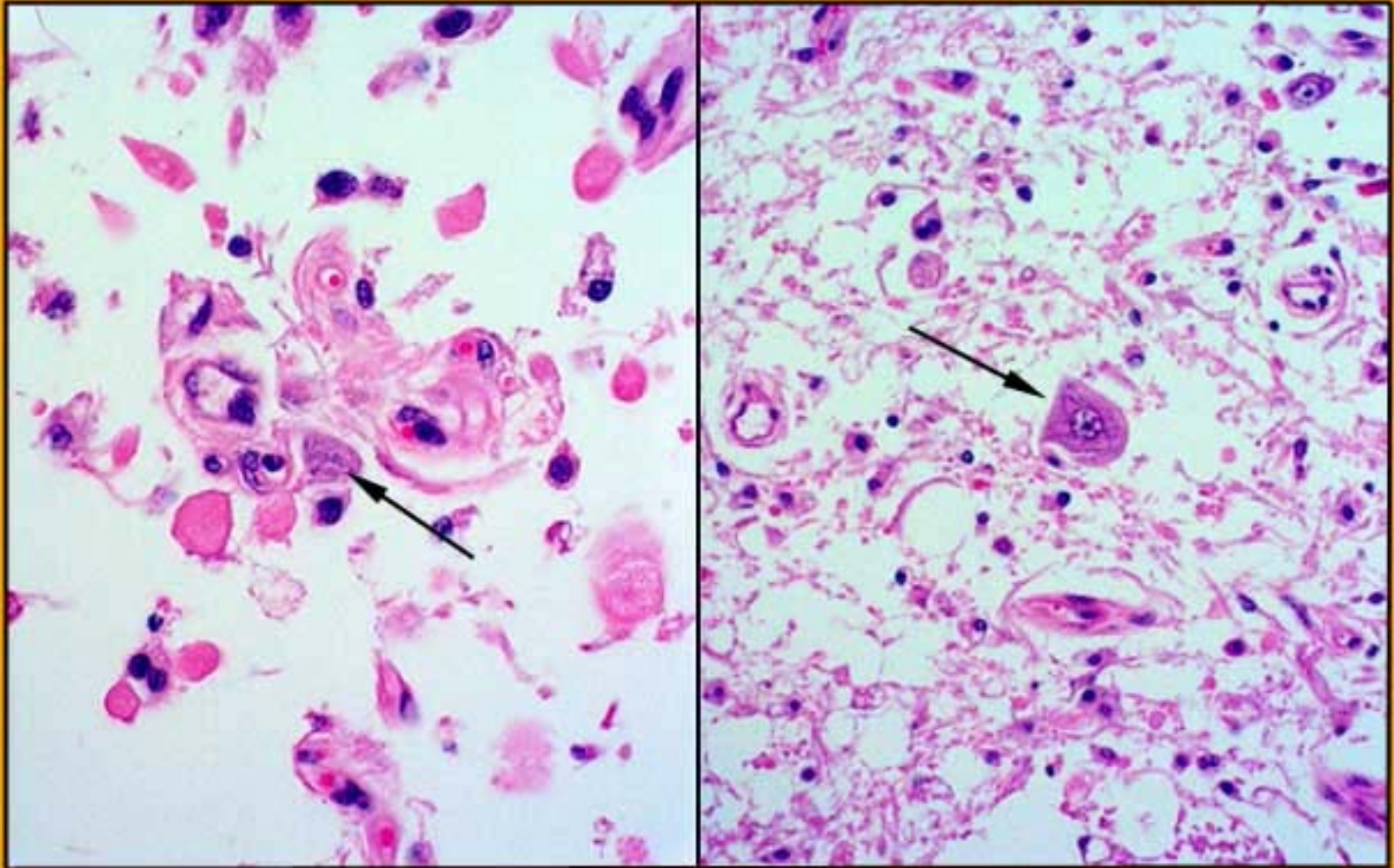
EXERCISE 6 OF 10.

IDENTIFY AND INTERPRET THE SIGNIFICANT CHANGES IN THESE TWO RELATED IMAGES (CLICK FOR SECOND IMAGE)



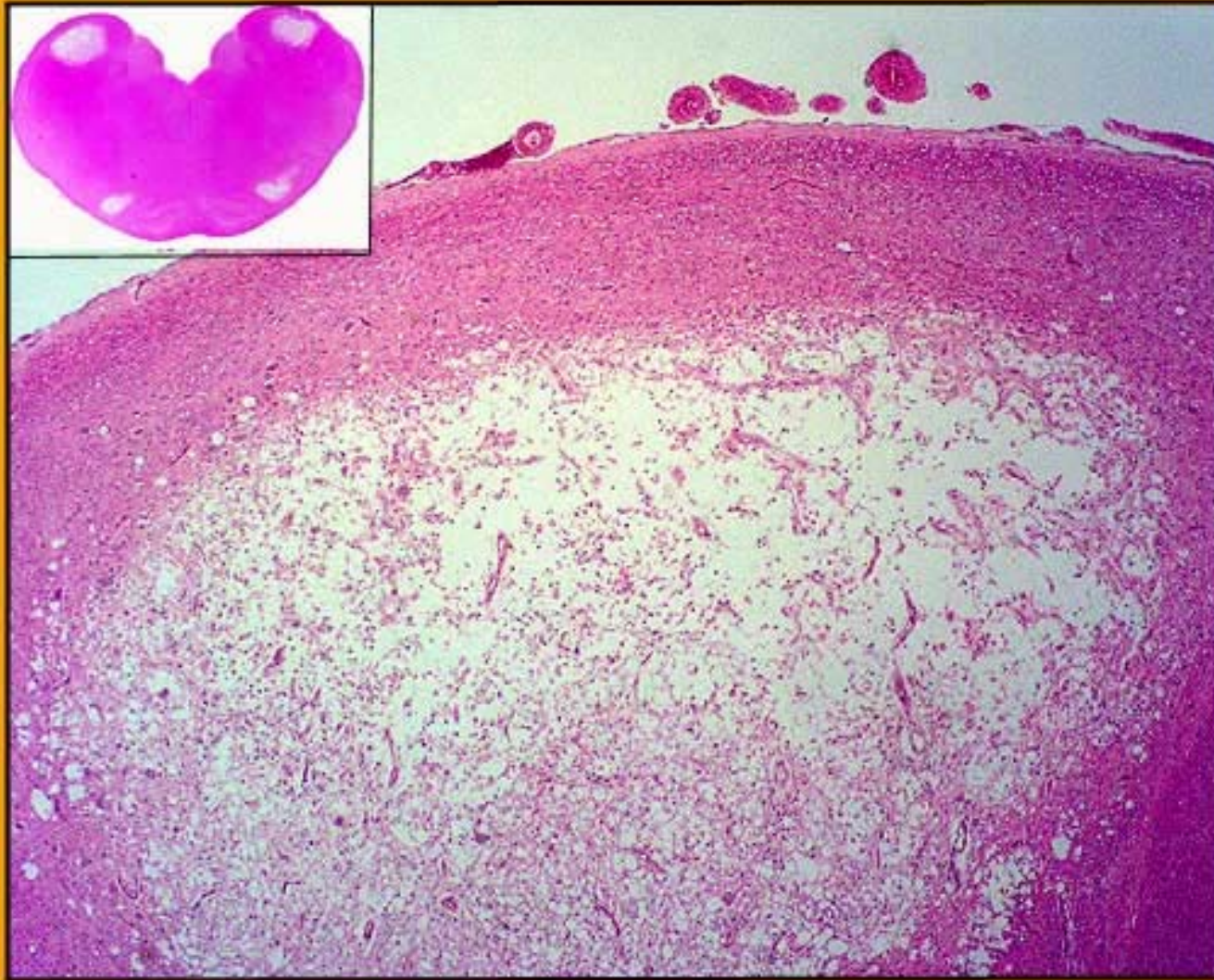
EXERCISE 7 OF 10.

IDENTIFY AND INTERPRET THE SIGNIFICANT CHANGES IN THESE TWO RELATED IMAGES (CLICK FOR SECOND IMAGE)



EXERCISE 7 OF 10.

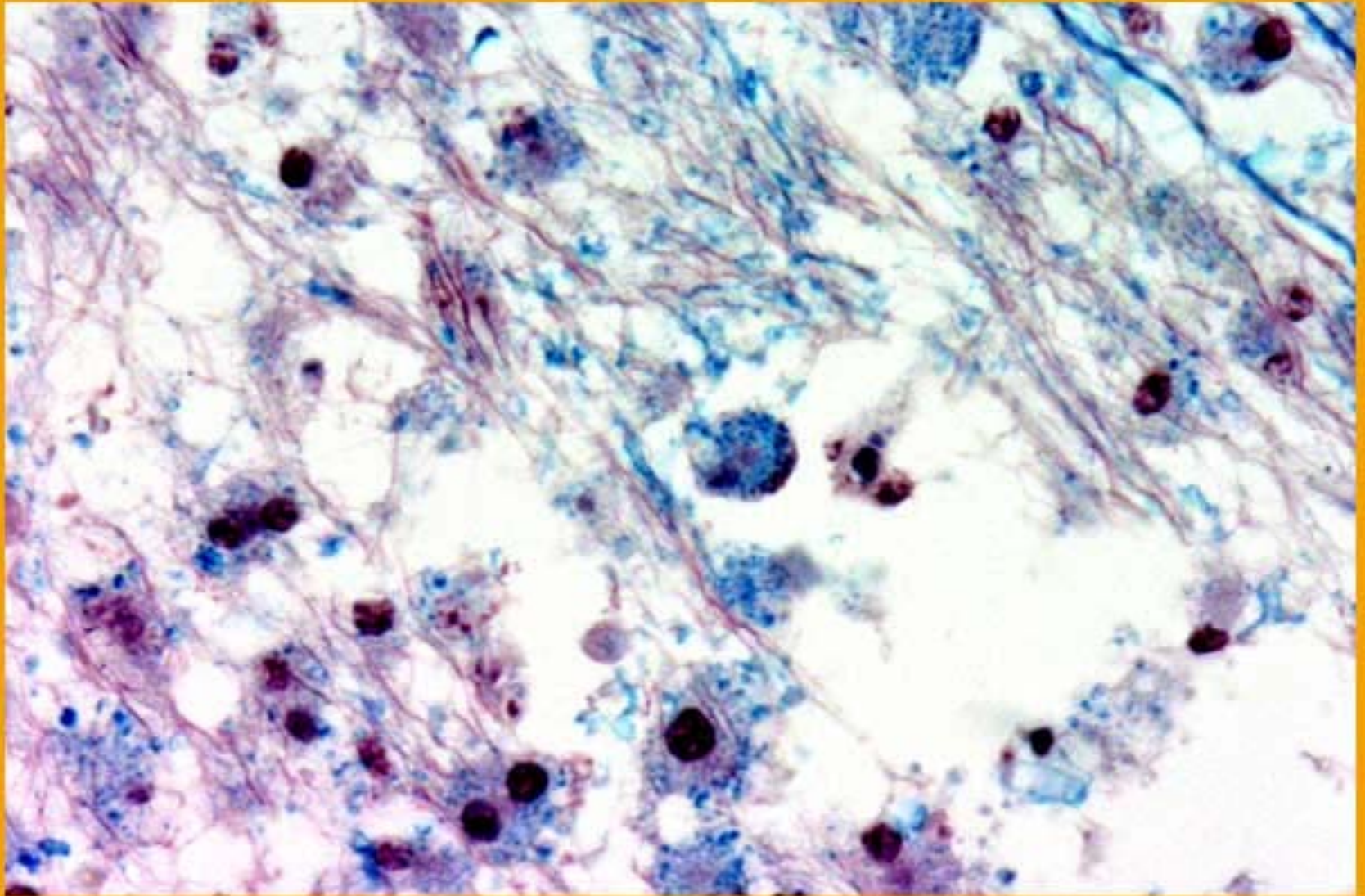
IDENTIFY AND INTERPRET THE SIGNIFICANT CHANGES IN THESE TWO RELATED IMAGES (CLICK FOR SECOND IMAGE)



EXERCISE 8 OF 10.

IDENTIFY AND INTERPRET THREE SIGNIFICANT CHANGES IN THESE TWO RELATED IMAGES (CLICK FOR SECOND IMAGE)

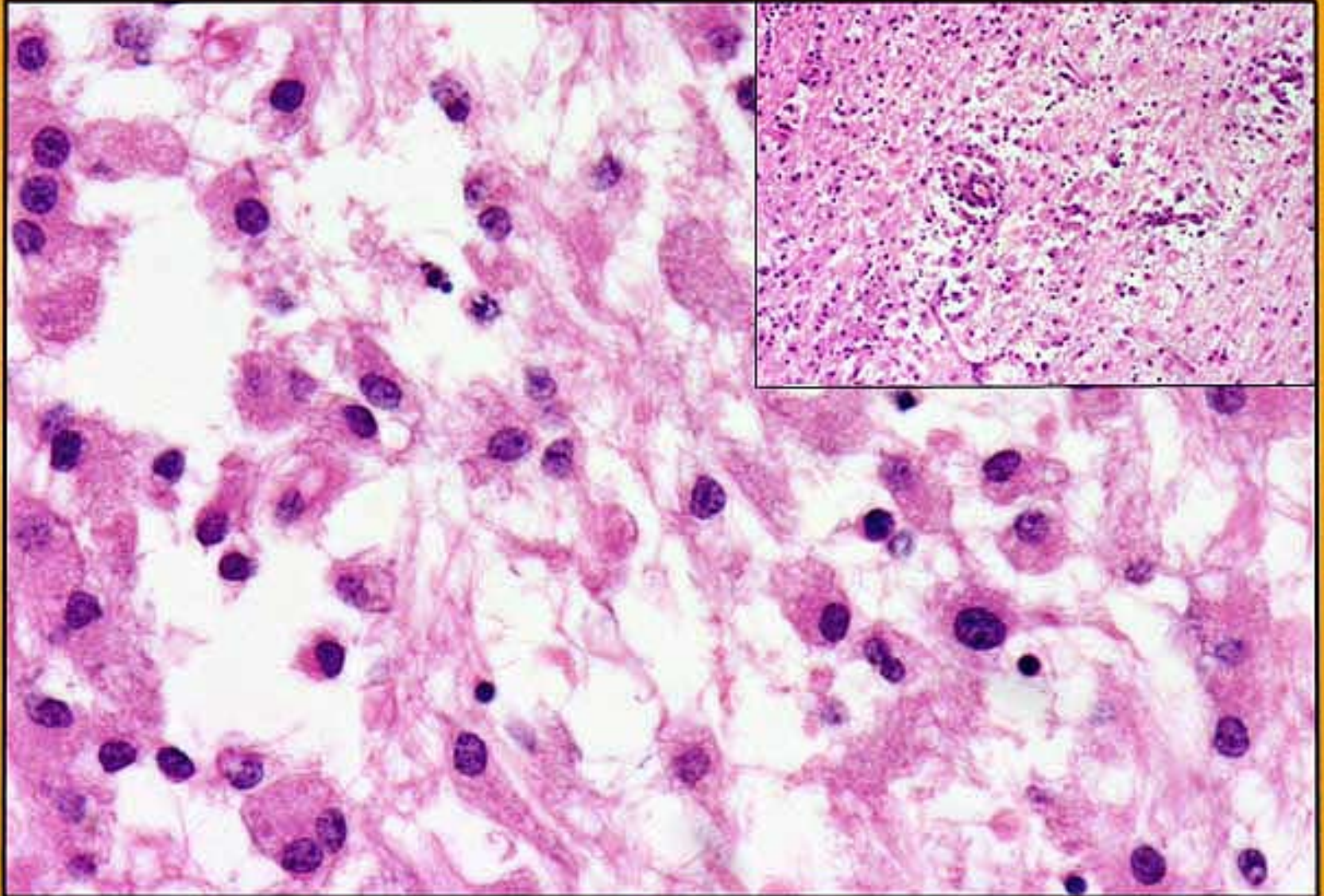
LUXOL FAST BLUE/HOLME'S Ag



EXERCISE 8 OF 10.

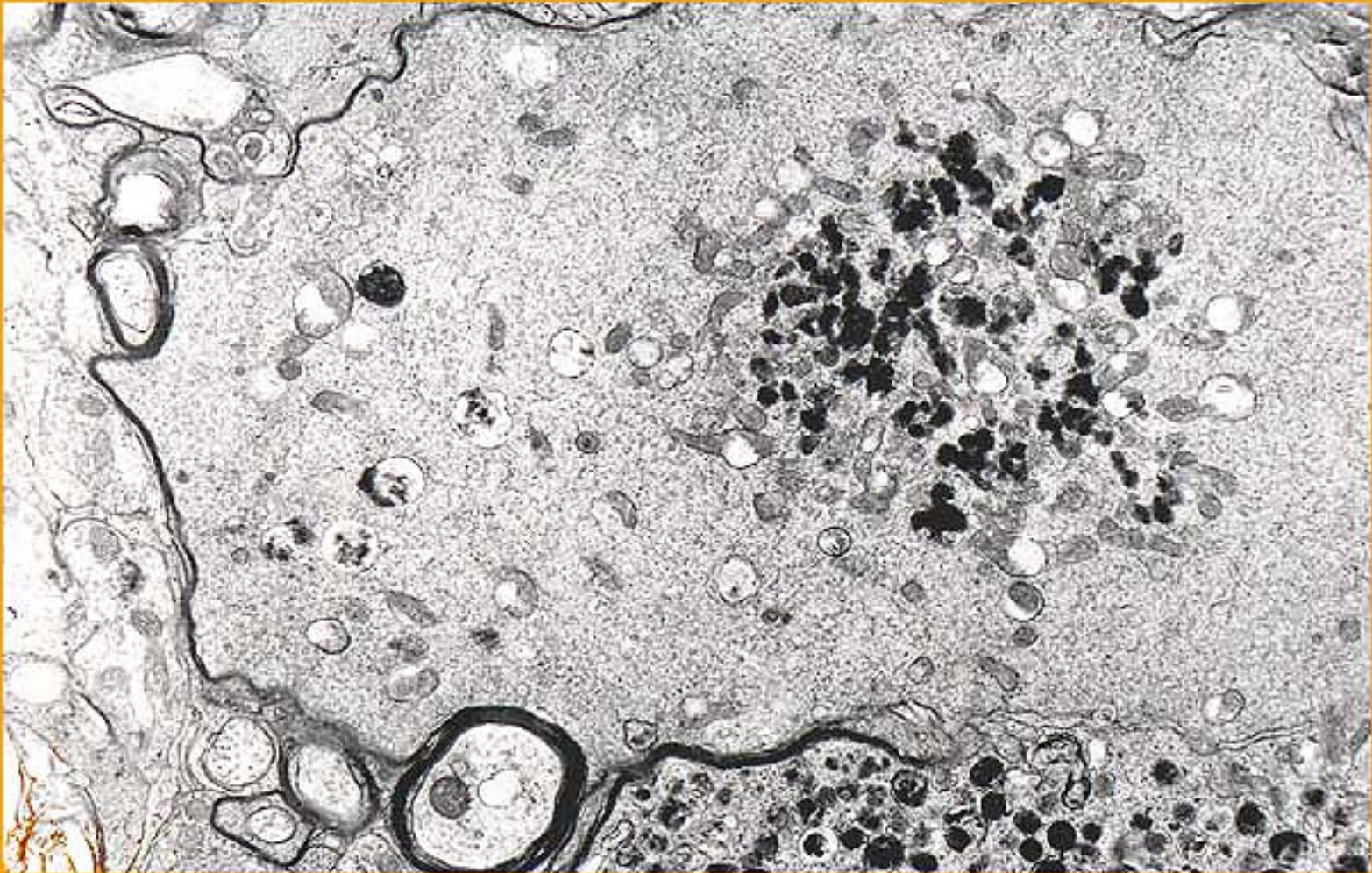
IDENTIFY AND INTERPRET THREE SIGNIFICANT CHANGES IN THESE TWO RELATED IMAGES (CLICK FOR SECOND IMAGE)

LUXOL FAST BLUE/HOLME'S Ag



EXERCISE 9 OF 10.

IDENTIFY AND INTERPRET THE SIGNIFICANT CHANGES IN THESE TWO RELATED IMAGES (CLICK FOR SECOND IMAGE)

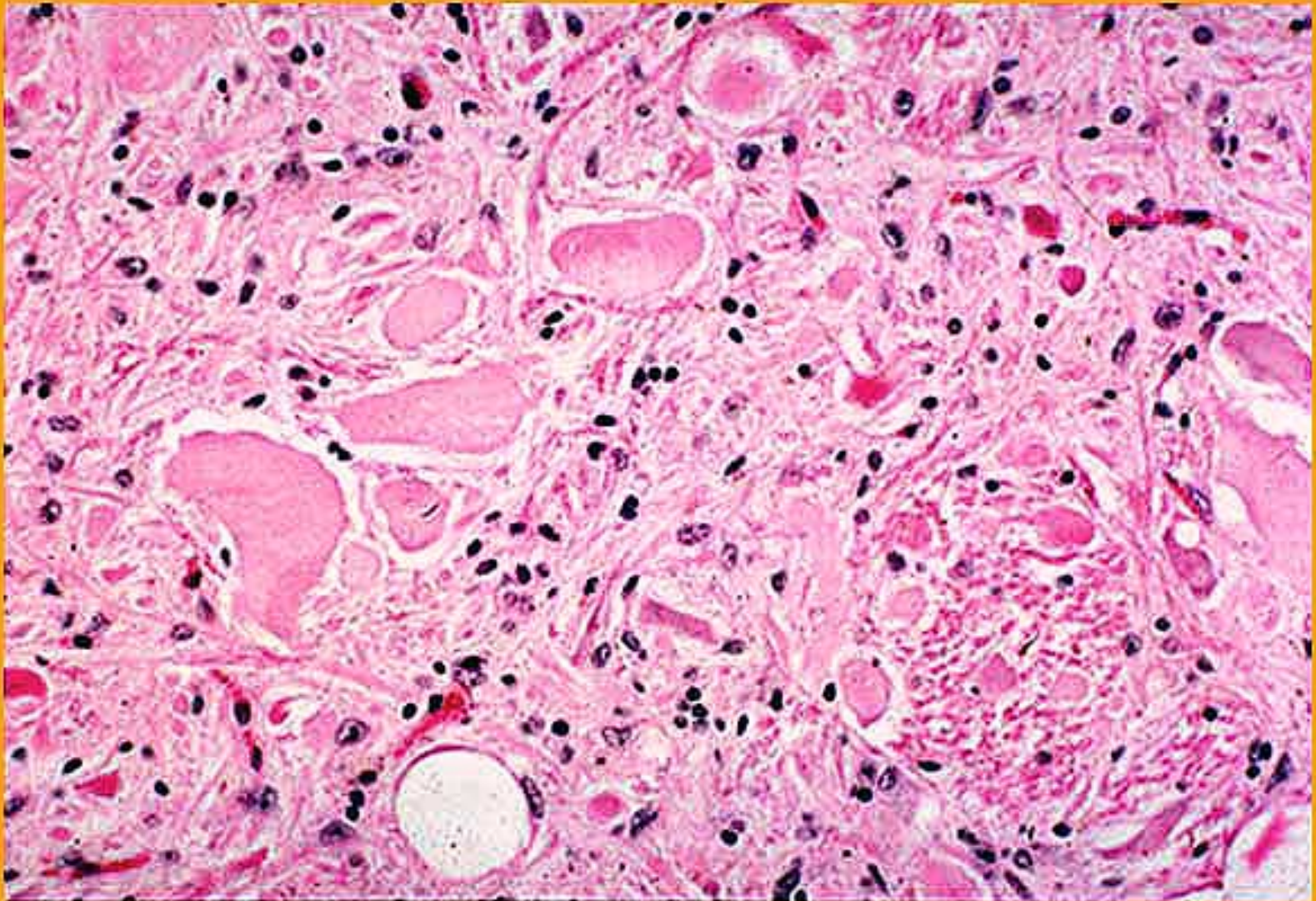


© 2001 College of Veterinary Medicine, Cornell University

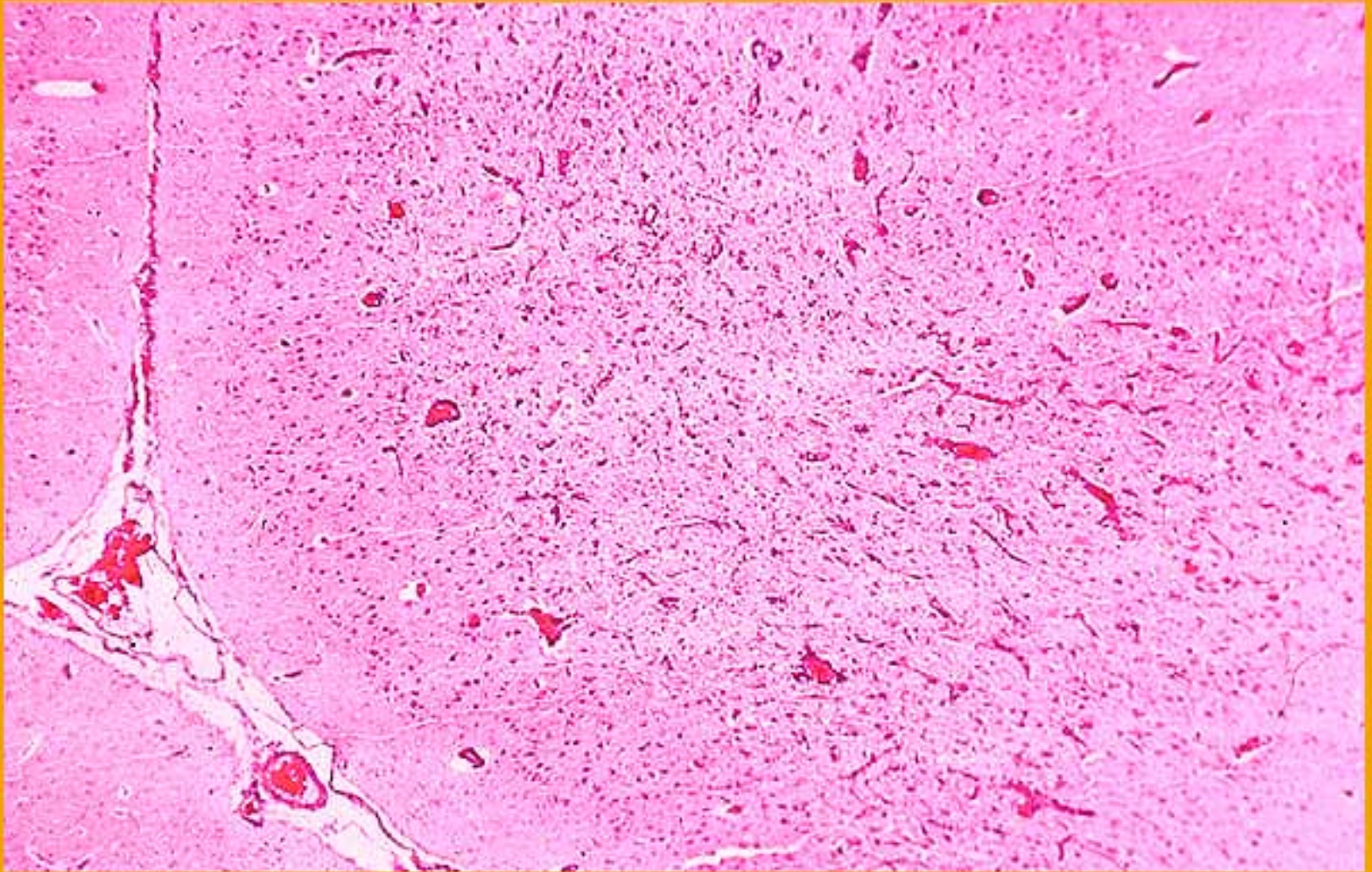
© 2001 College of Veterinary Medicine, Cornell University

EXERCISE 9 OF 10.

IDENTIFY AND INTERPRET THE SIGNIFICANT CHANGES IN THESE TWO RELATED IMAGES (CLICK FOR SECOND IMAGE)



EXERCISE 10 OF 10. IDENTIFY AND INTERPRET THE SIGNIFICANT CHANGES IN THESE TWO RELATED IMAGES (CLICK FOR SECOND IMAGE)



EXERCISE 10 OF 10. IDENTIFY AND INTERPRET THE SIGNIFICANT CHANGES IN THESE TWO RELATED IMAGES (CLICK FOR SECOND IMAGE)

