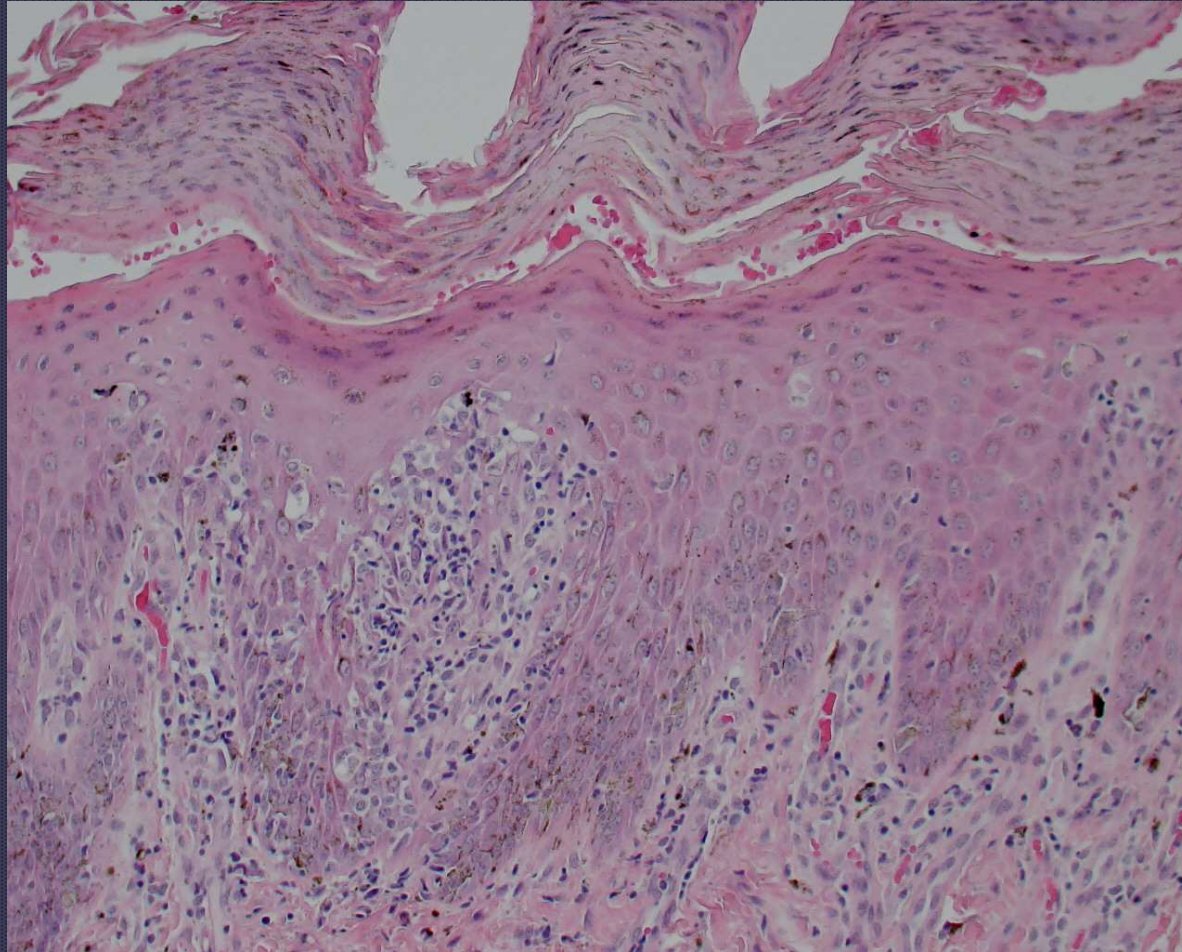
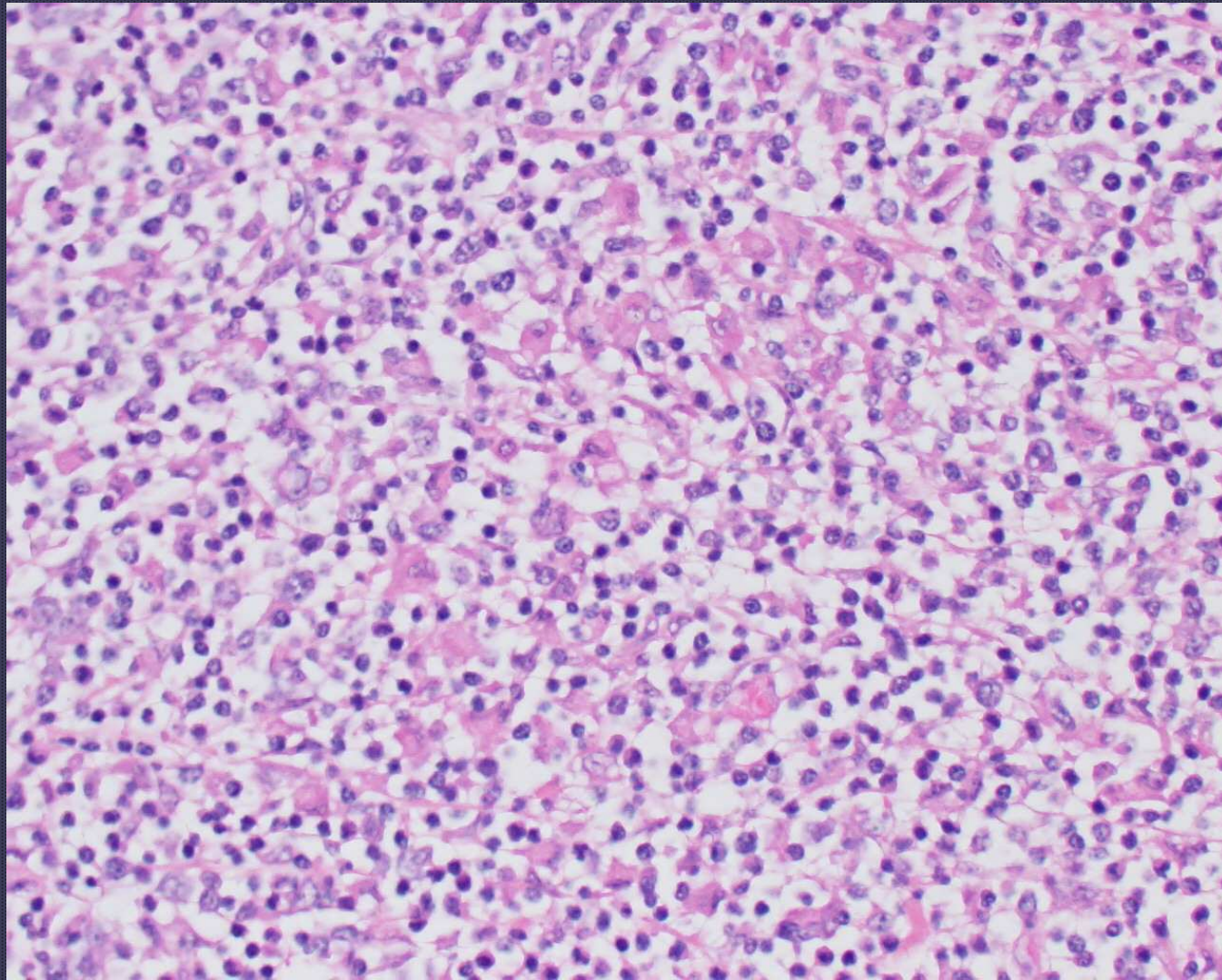


Equine cutaneous lupus

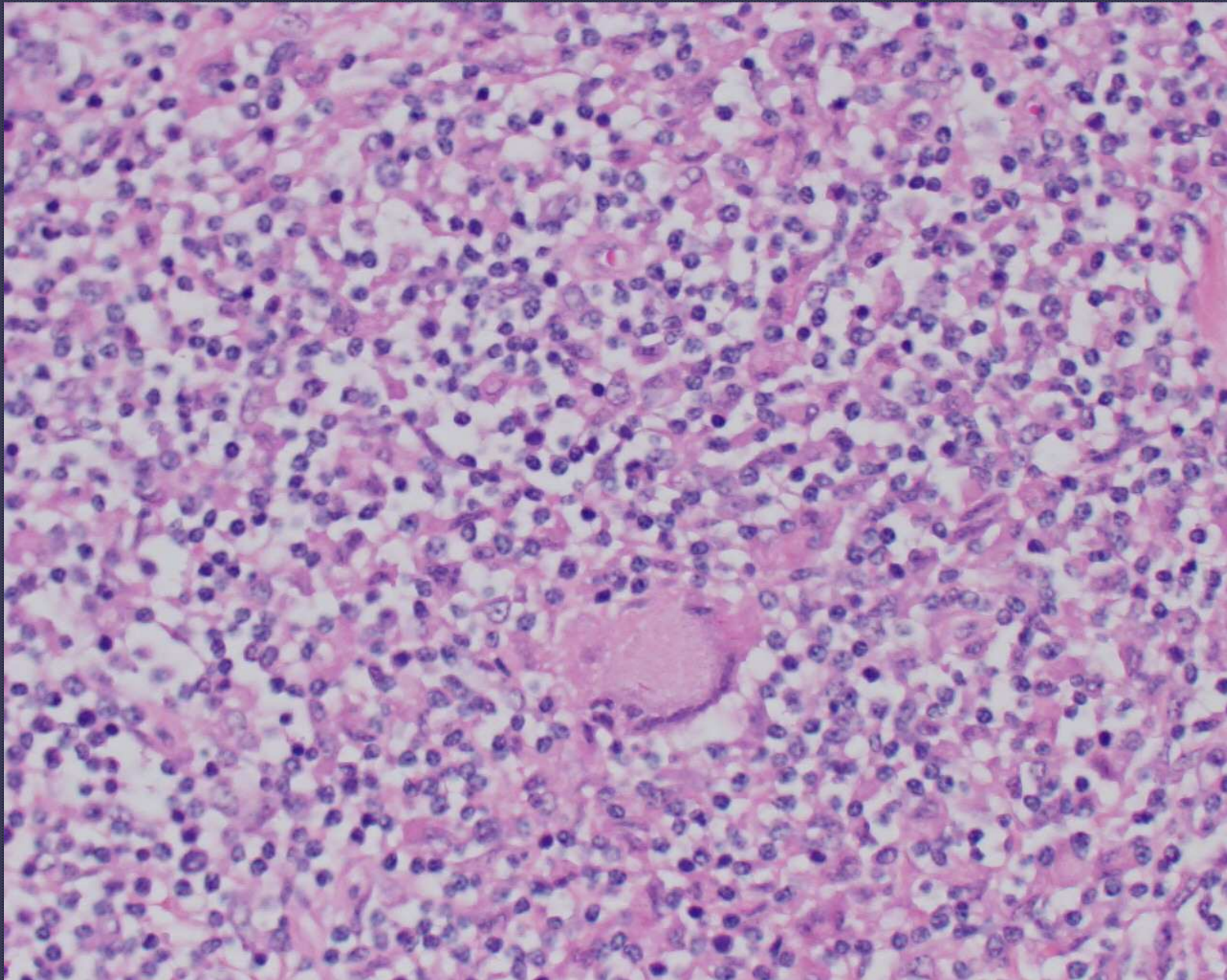


Equine Dermopath Part II

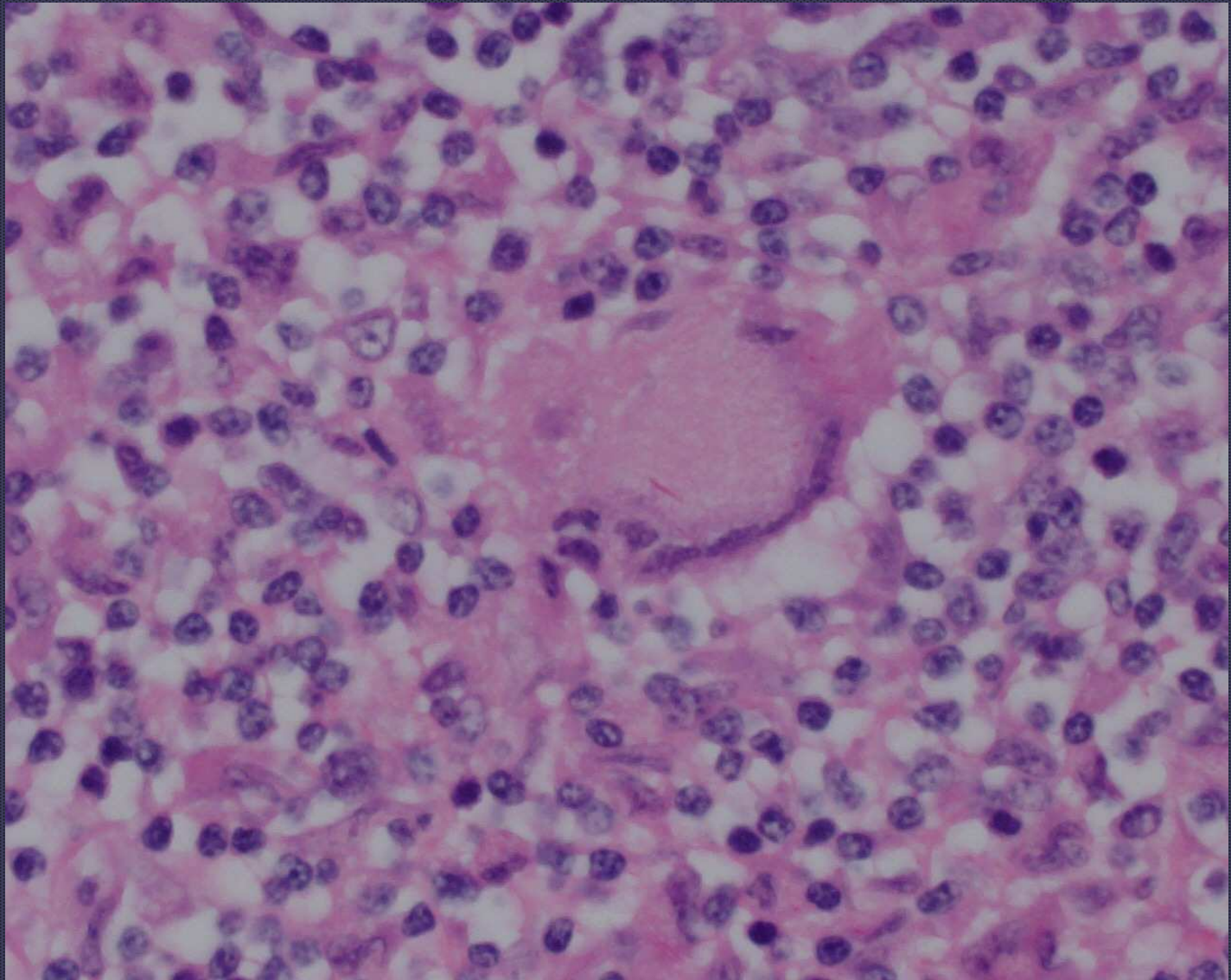
Nodular diseases



Lymphohistiocytic lymphoma



Lymphohistiocytic lymphoma



Lymphohistiocytic lymphoma (note mixed cell type and giant cells)

- *Meyer J, DeLay J and Bienzle D. Clinical , Laboratory and Histopathologic Features of Equine Lymphoma. Vet Pathol, 2006: 43: 914-924.*



Congenital (nonviral) papilloma

- *White KS, Fuji RN, Valentine BA, et al. Equine congenital papilloma: pathological findings and results of papillomavirus immunohistochemistry in five cases. Veterinary Dermatology, 2004; 15:240-4.*

Aural plaque

