

# Interstitial Pneumonia

- Possible sequela
  - Resolution
  - Fibrosis
  - Persistence
  - Bacterial bronchopneumonia

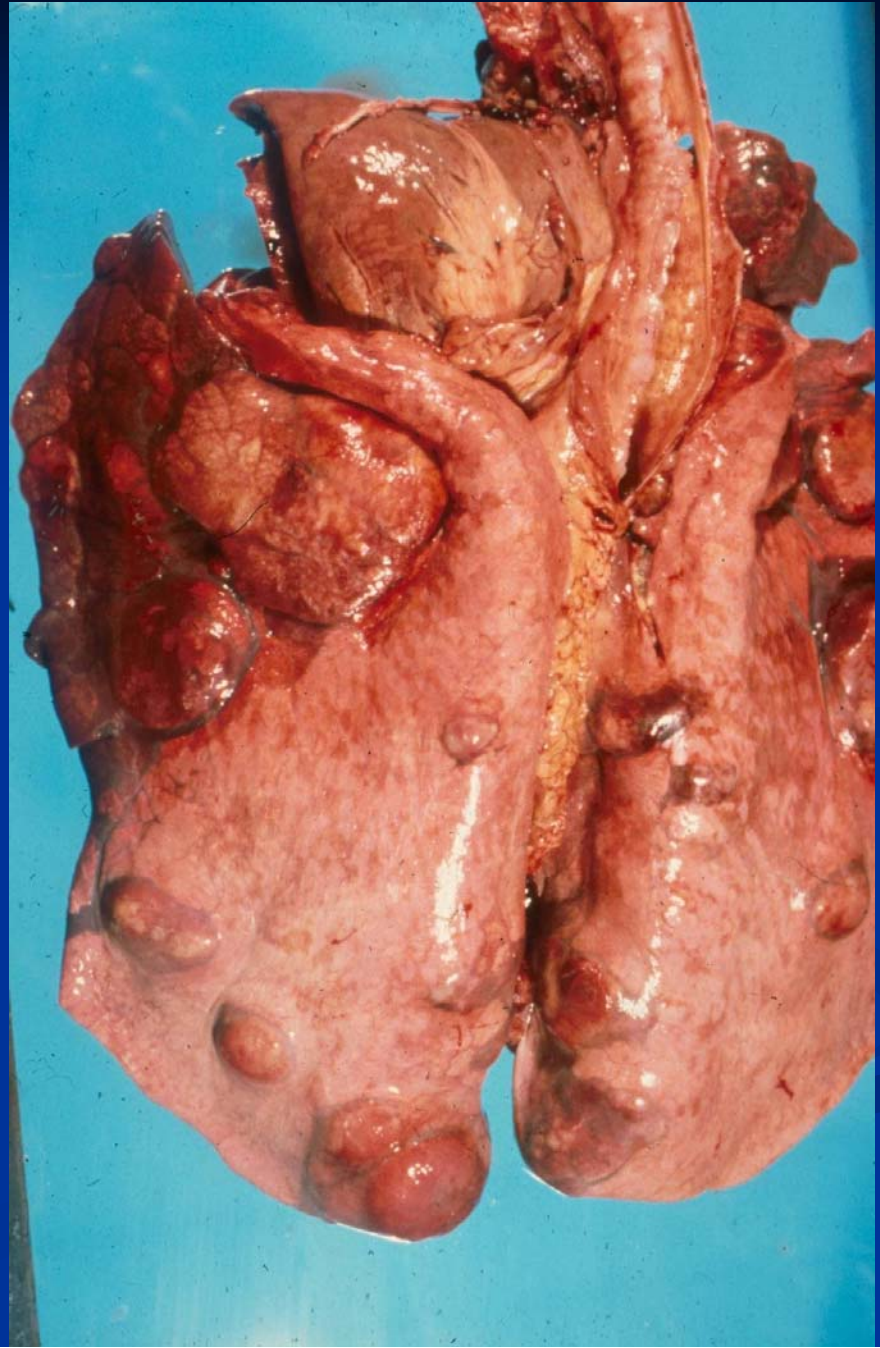
# Bronchointerstitial Pneumonia

- **Microscopic diagnosis only**
  - Components
    - Interstitial pneumonia (non-suppurative)
    - Bronchiolitis
  - Etiology
    - Some viruses e.g. herpesvirus, BRSV
    - Mycoplasma

# Multifocal Lesions

- Abscess
  - Bronchogenic
  - Septic emboli
  - Aspiration
- Foreign body
- Granuloma
- Neoplasia

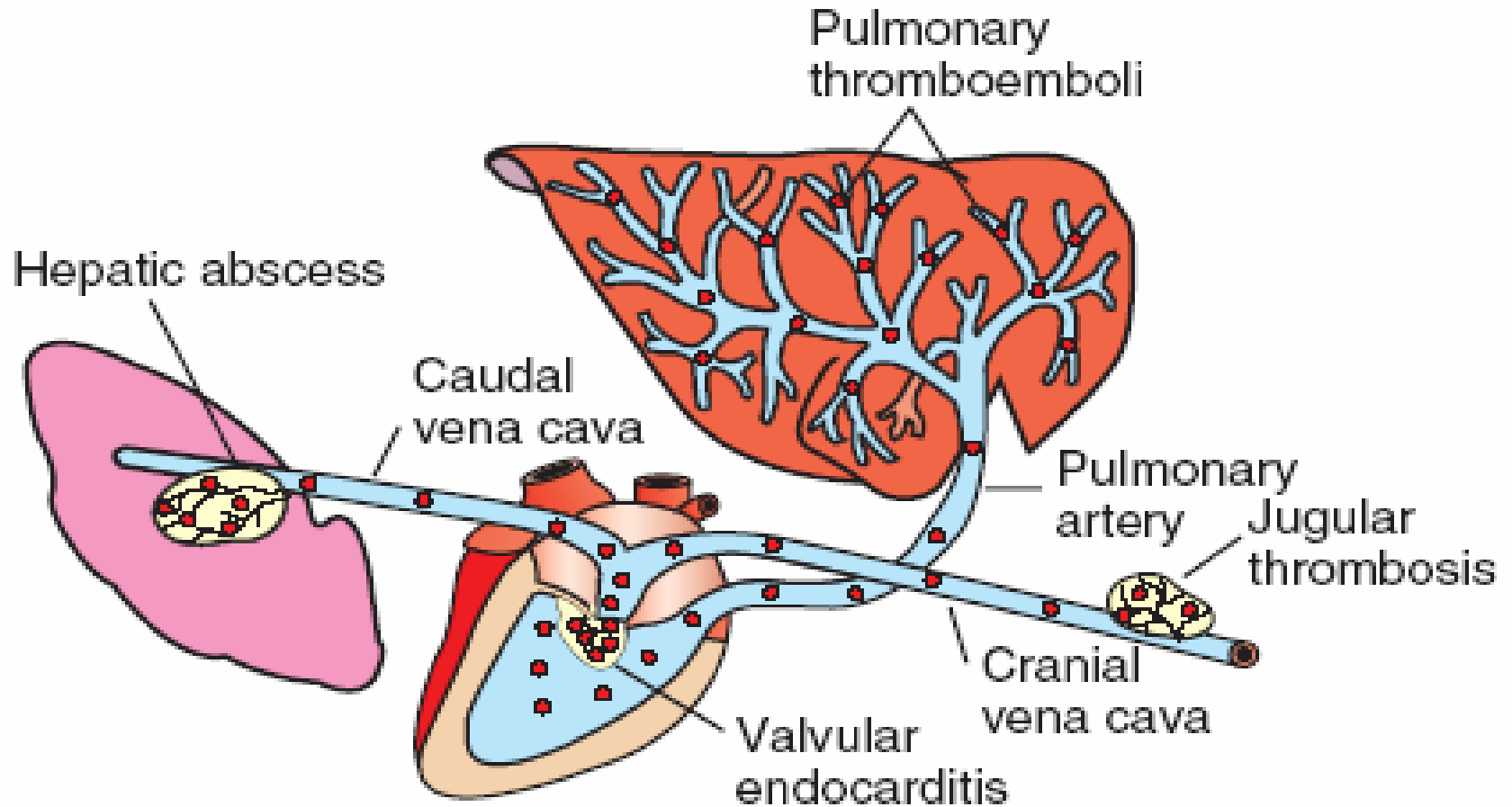
# Multifocal Abscesses - Horse



# Embolic Pneumonia

- Etiology
  - Bacterial (abscesses)
    - Vegetative endocarditis
    - Septicemia
    - Ruptured liver abscess
  - Mycotic (granulomas)
    - Rumen ulcers
    - GI ischemia
  - Foreign body (e.g. iv injection, hair)

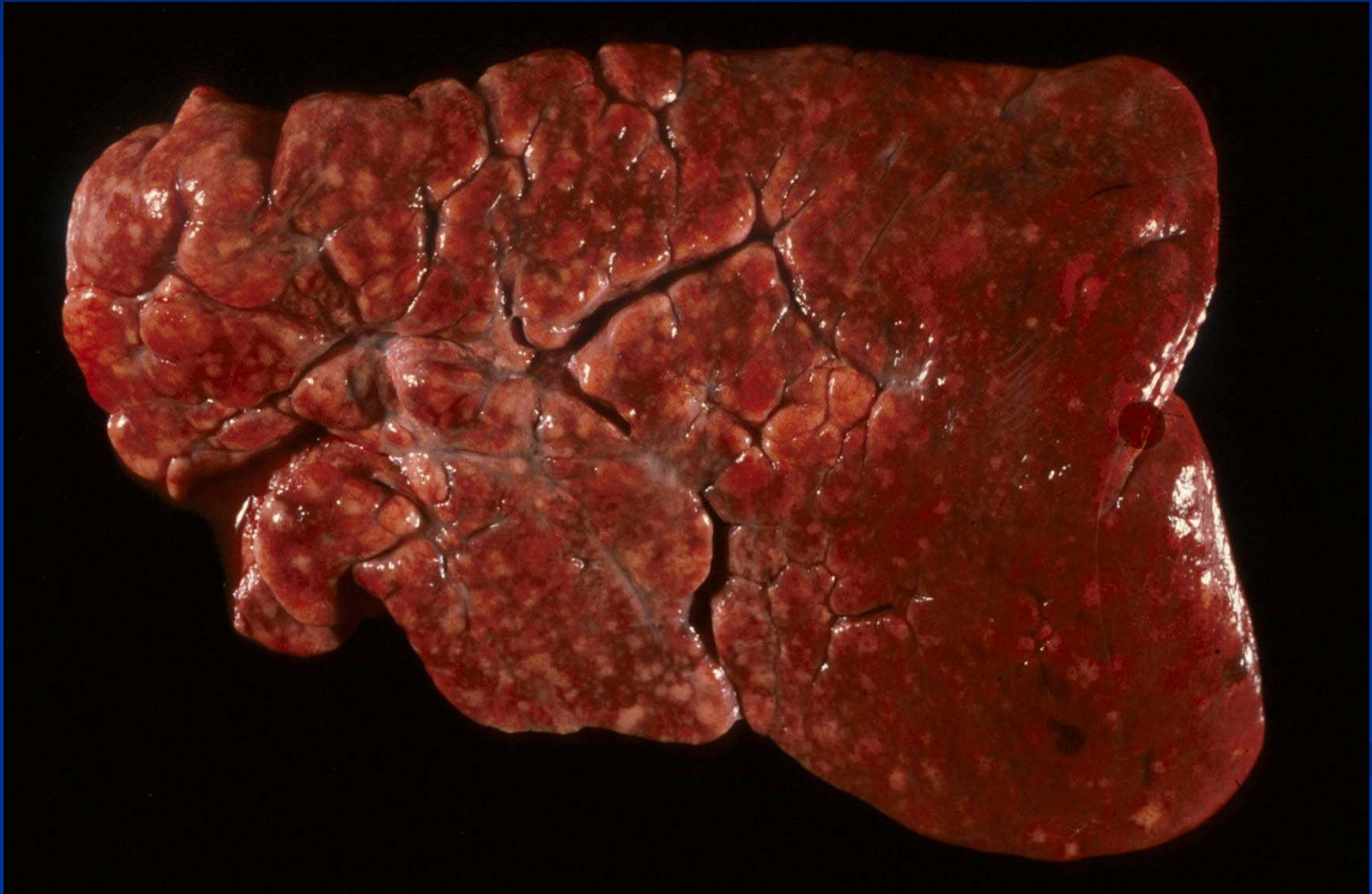
# Pulmonary Emboli



# Granulomatous Pneumonia

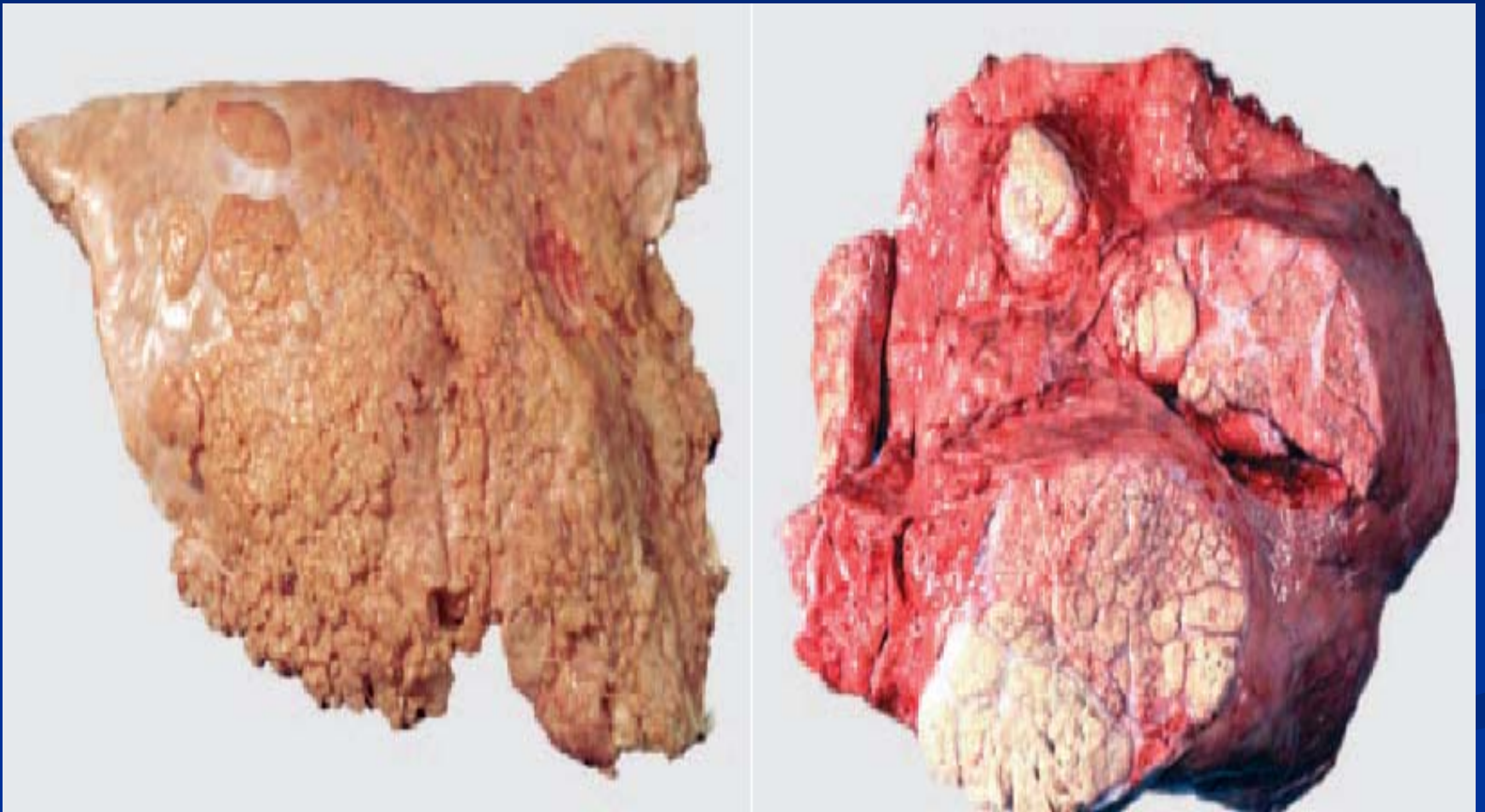
- Inhaled or blood-borne agents
- Large areas are affected vs. pulmonary granulomas
- Multifocal to locally extensive distribution
- Agent persists and incites granulomatous response
- Etiology: mycotic, bacterial, particulates

# Granulomatous Pneumonia - Dog





# Tuberculosis - Cow



# Tuberculosis - Cow

