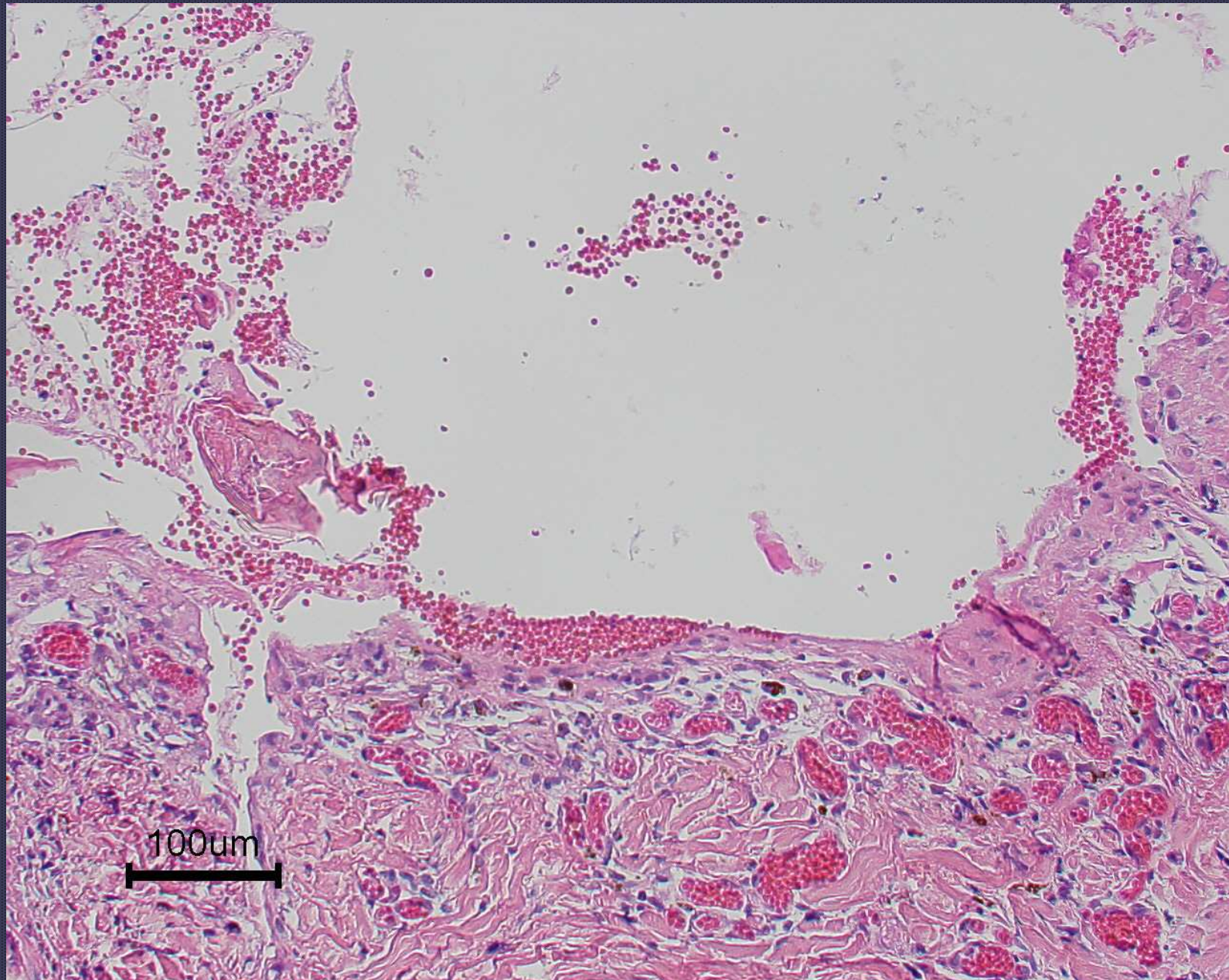


Large vesicle in a horse with Bullous Pemphigoid



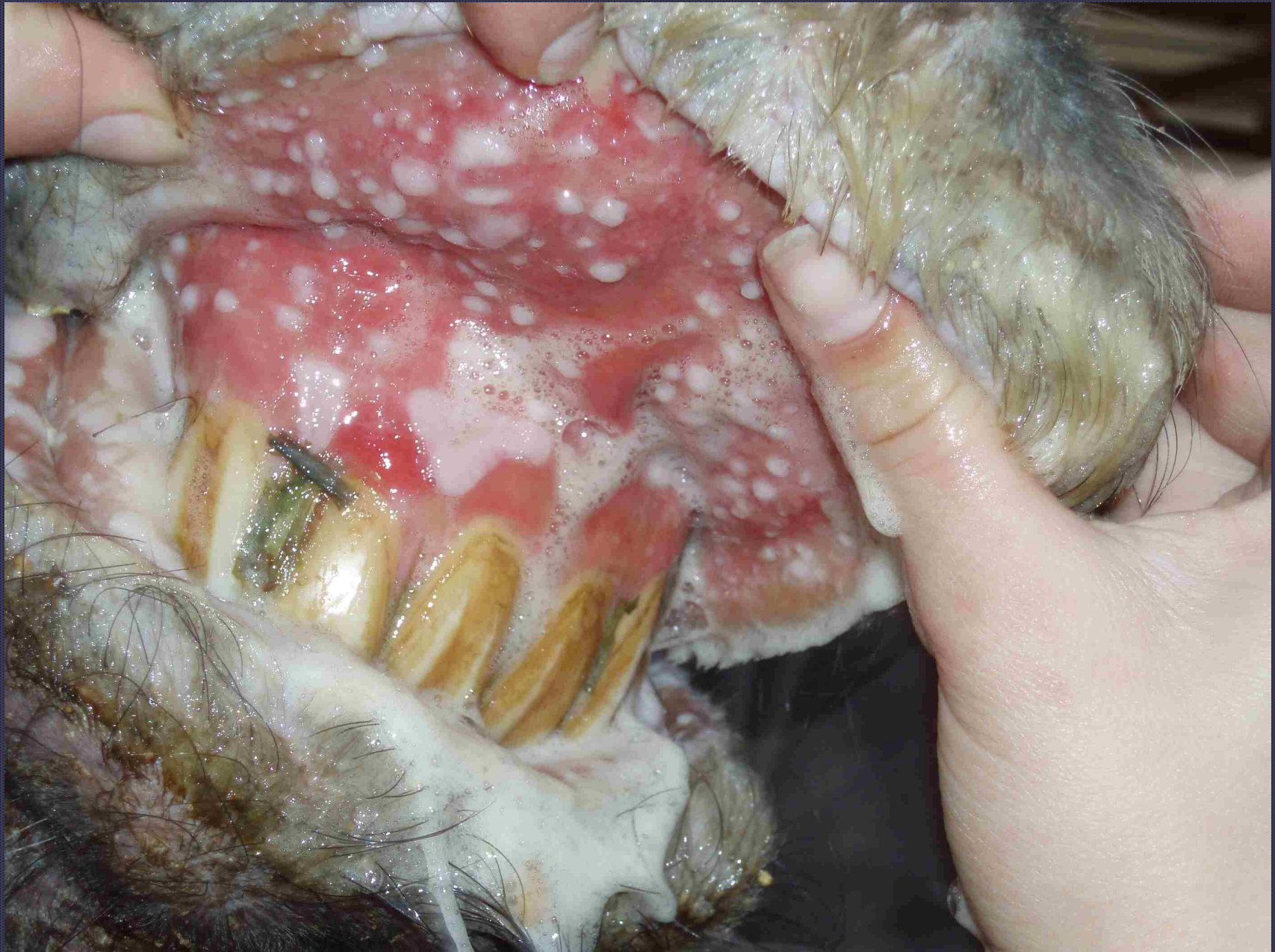
Complete epidermal separation from dermis- Bullous pemphigoid



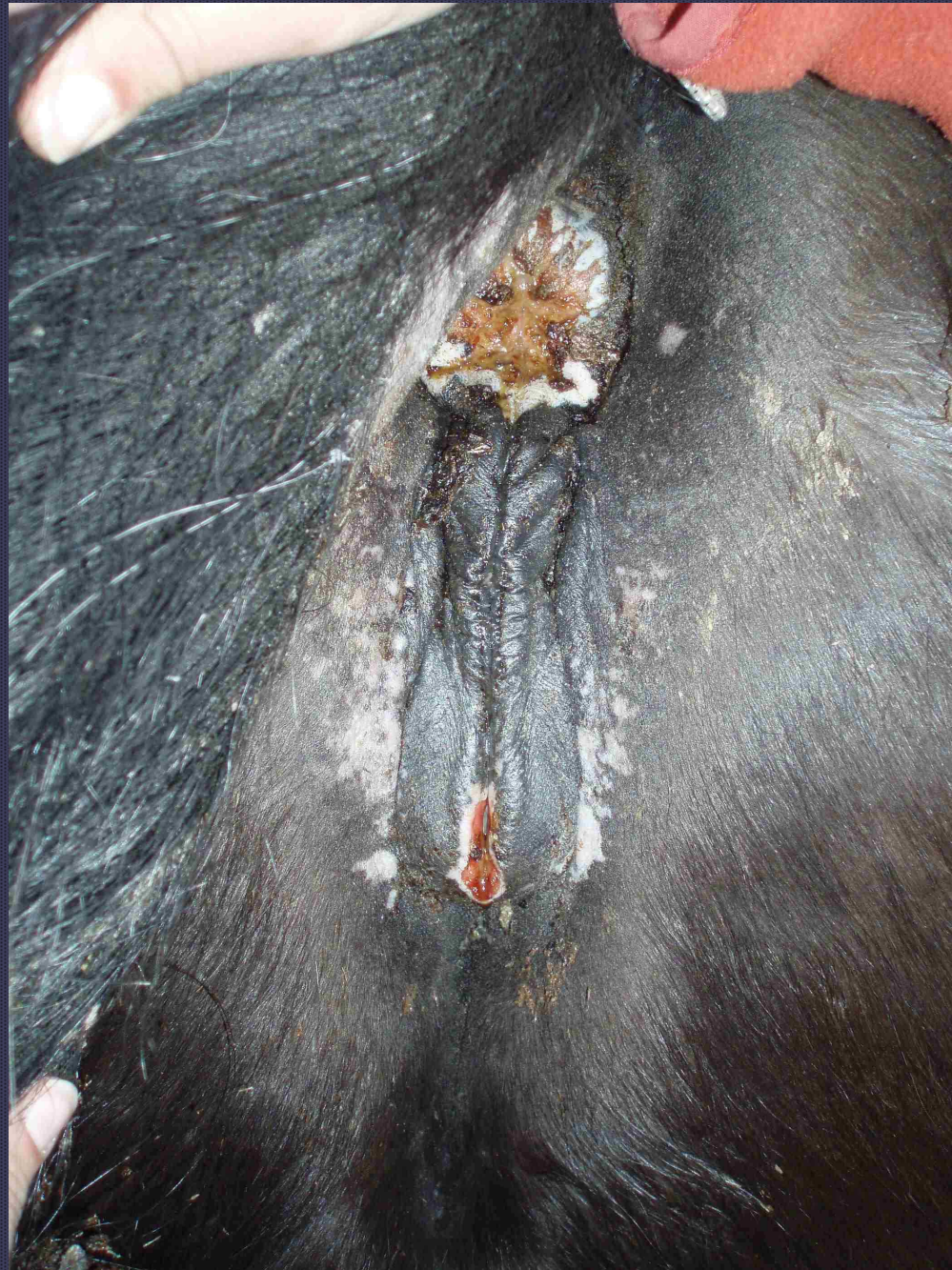
Severe clefting/vesicle formation in Bullous pemphigoid



Bullous pemphigoid



Bullous pemphigoid



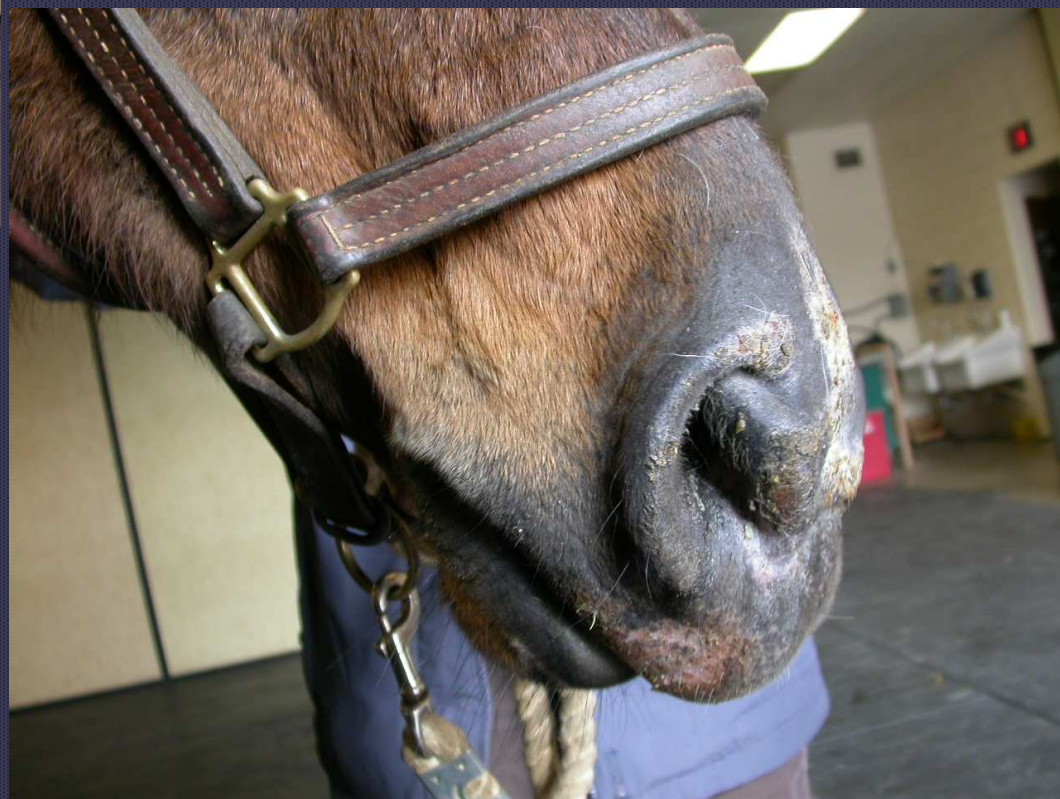
Bullous pemphigoid

Bullous Pemphigoid

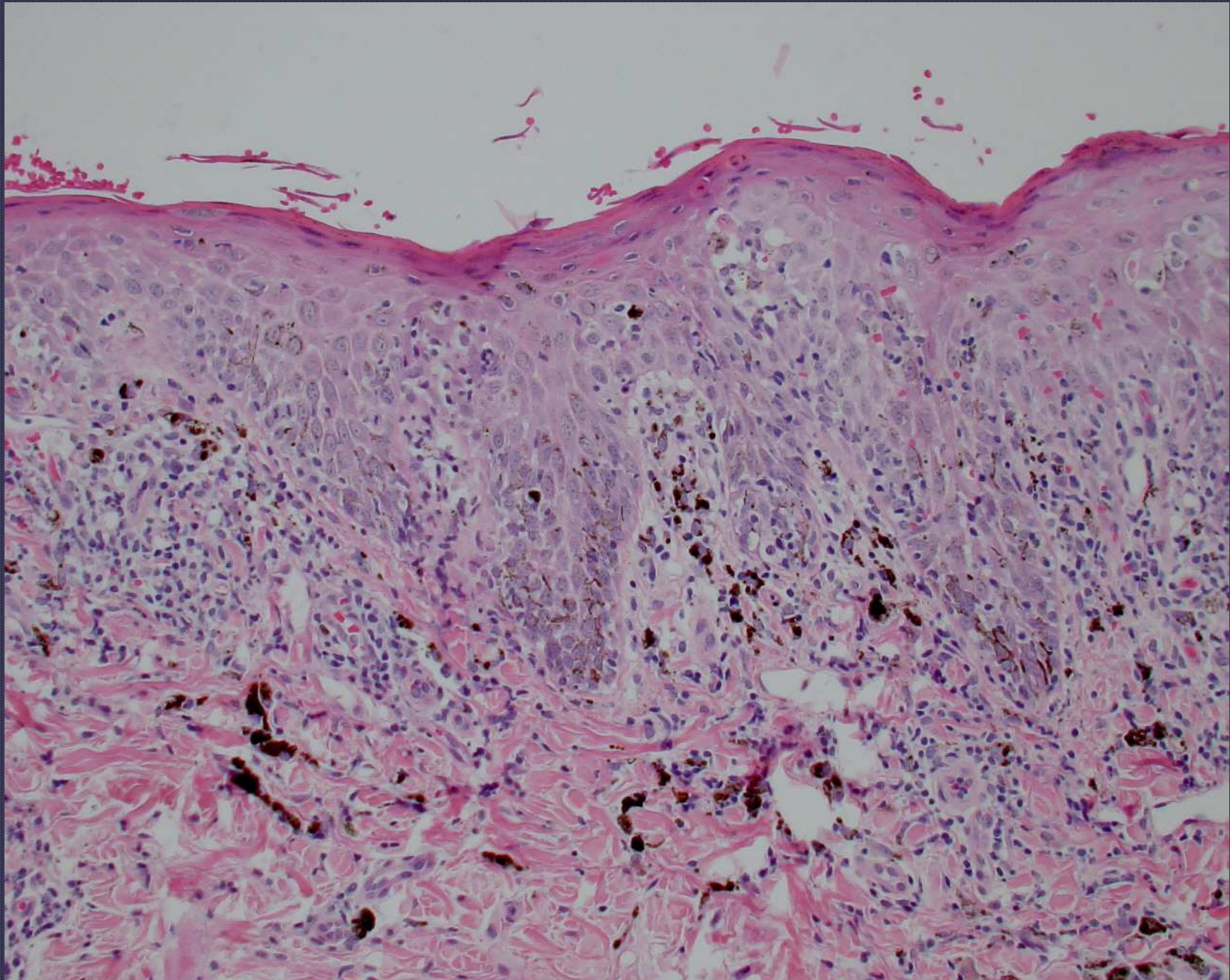
- Acquired autoantibody to component of hemidesmosome
- BP180/BPAG2
- Poor prognosis in horses
- Three cases reported-euthanized
- Transient vesicles→ ulcers covered by crusts
- Lethargy and anorexia



Erythema multiforme



Cutaneous lupus erythematosus-localized



Interface dermatitis (Cutaneous lupus)