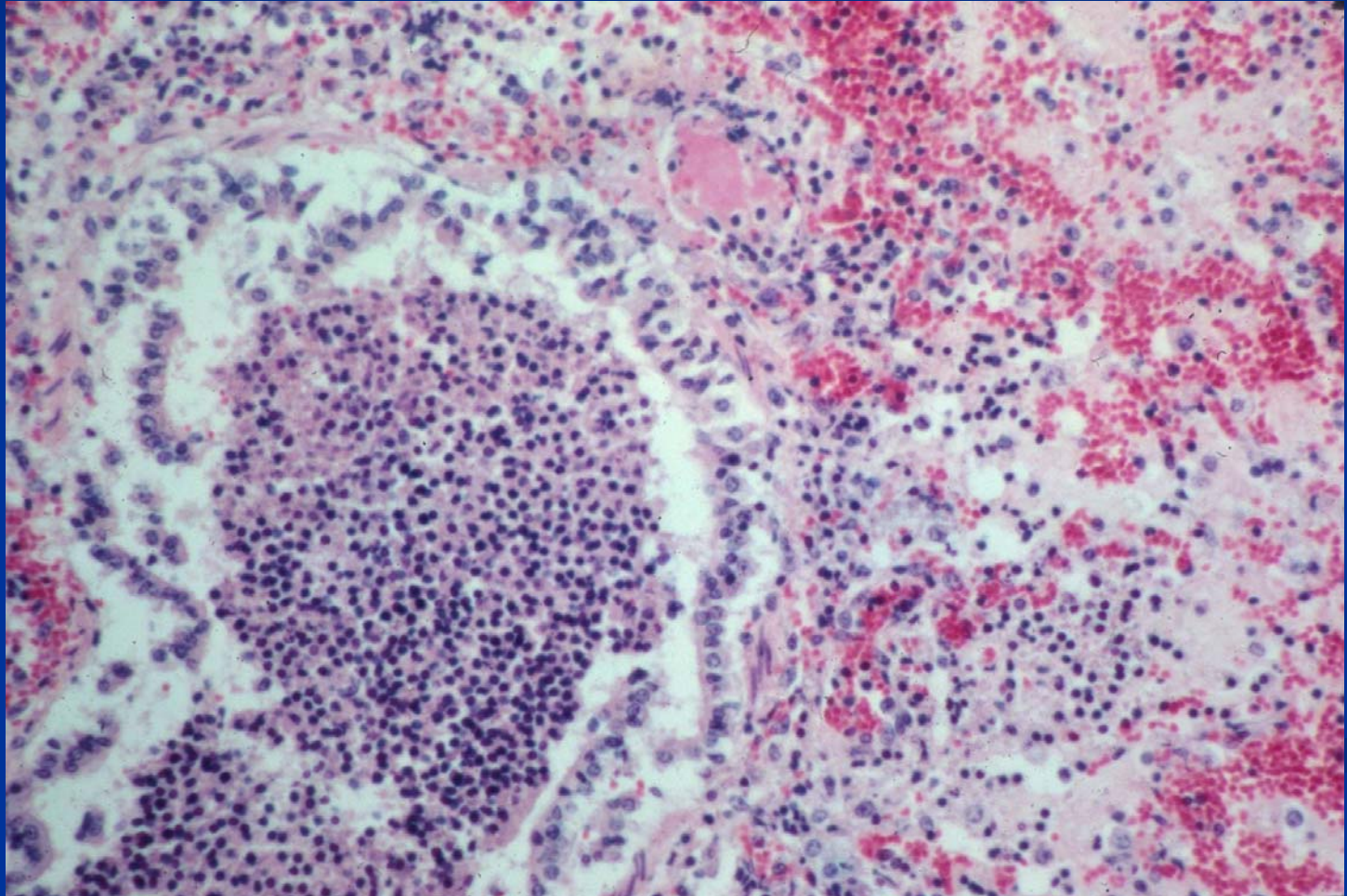
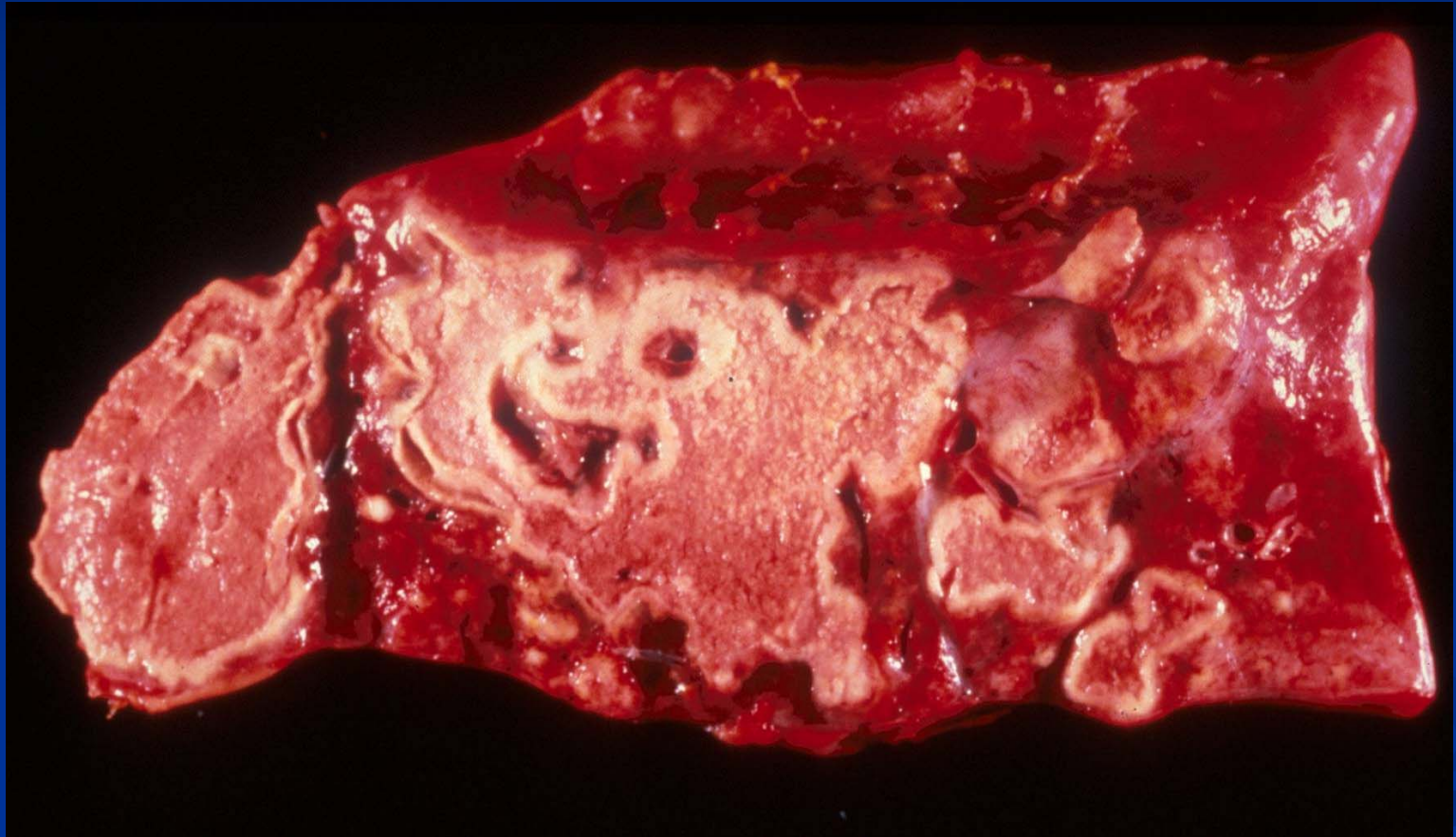


# Bronchopneumonia

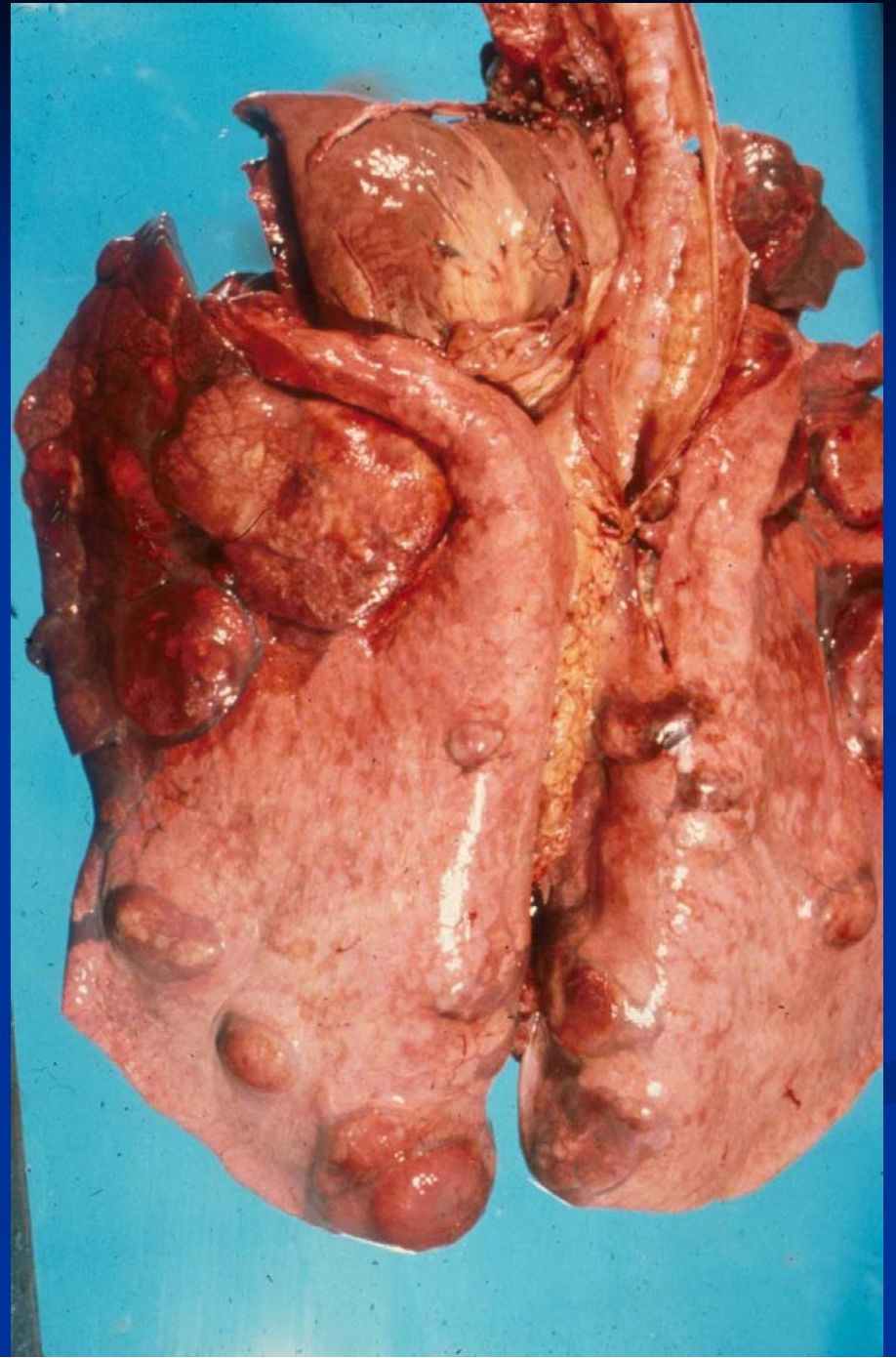


# Sequestra Post Bronchopneumonia





# Pulmonary Abscesses



# *Rhodococcus equi*

- Facultative intracellular Gram positive organism
  - Plasmid encoded virulence factors
  - Survives in macrophages
- Important worldwide cause of morbidity and mortality
- Enzootic on farms – soil and feces
- Primarily affects
  - Foals 1-6 month
  - Older immunosuppressed horses

# *Rhodococcus equi*

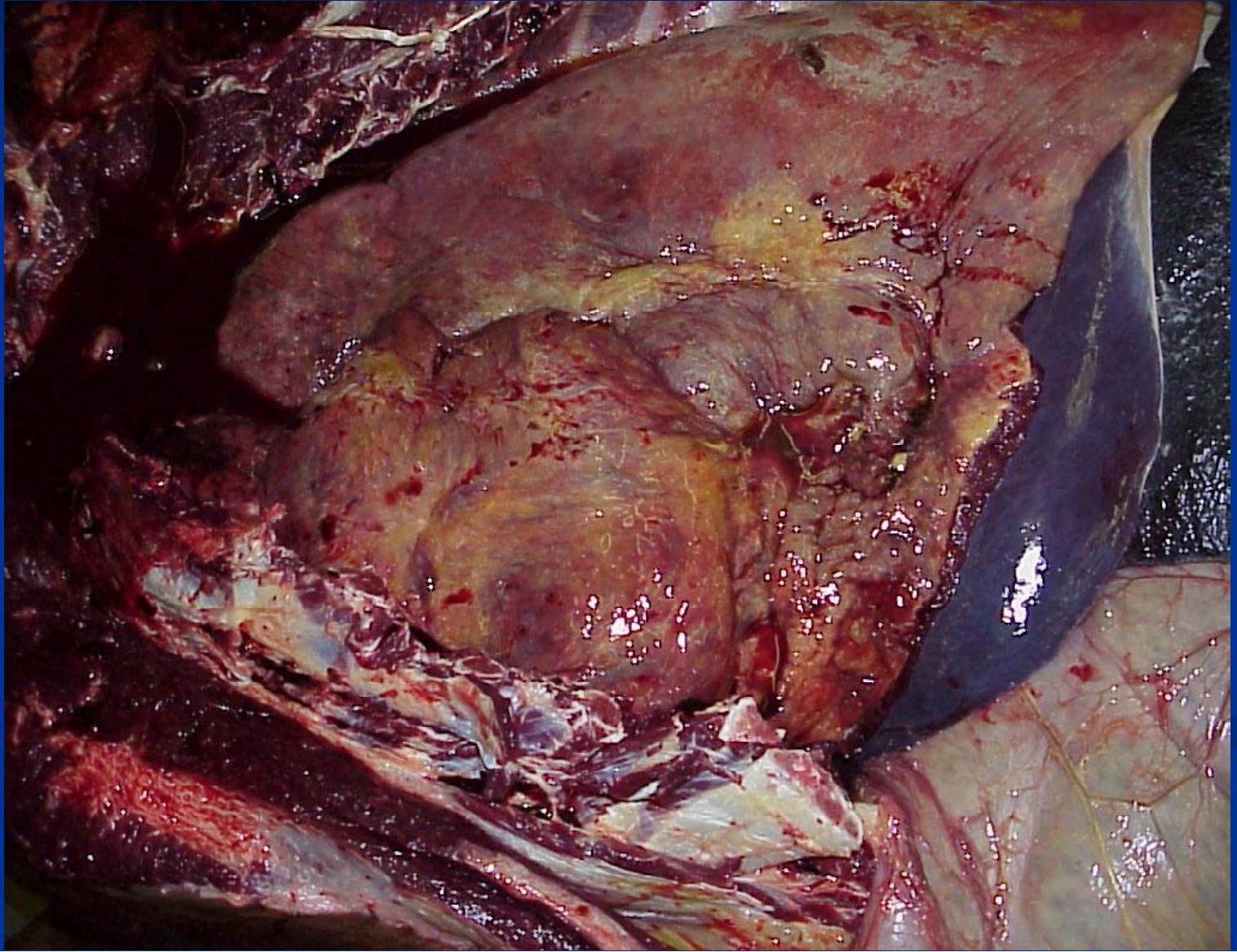
- Disease - sporadic
  - Respiratory - always
  - Enteric – ulcerative enterocolitis - sometimes
  - Disseminated occasionally
- Pathogenesis – aerogenous, infected sputum to intestines (?)

# *Rhodococcus equi*

- Pulmonary pathology
  - Acute - anteroventral suppurative bronchopneumonia followed by
  - Abscesses progress to pyogranulomatous pneumonia with caseous necrosis
  - Chronic – large coalescing caseous masses surrounded by fibrous tissue



# *Rhodococcus equi* – Bronchopneumonia with abscesses



# *Rhodococcus equi*

Bronchopneumonia with abscesses





# *Rhodococcus equi*

Bronchopneumonia with abscesses



# Mycobacteriosis

- *Mycobacterium bovis*, *tuberculosis* and *avium* complex
- Ingestion followed by hematogenous dissemination
- Pulmonary granulomas without calcification or necrosis