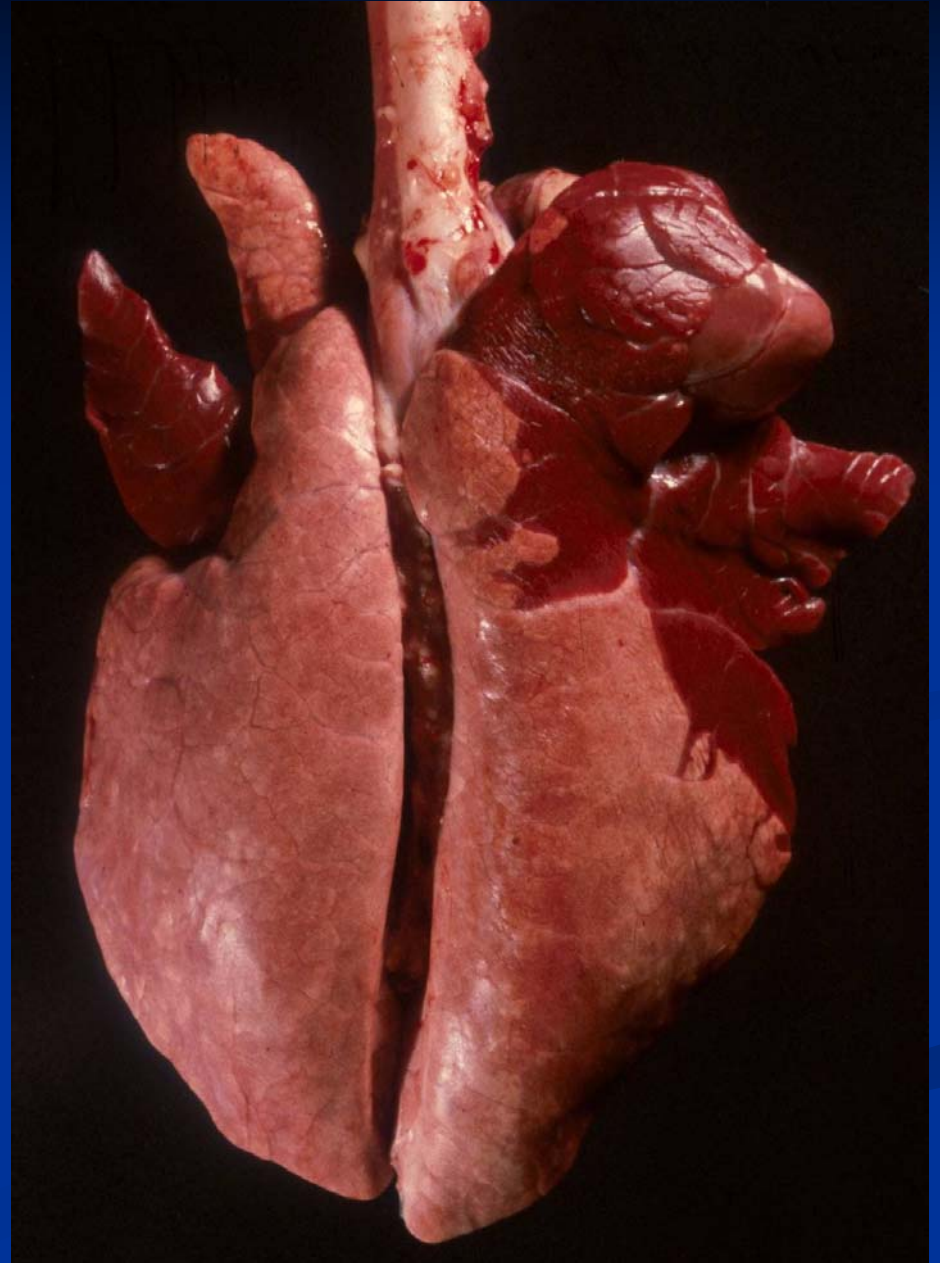


Broncho-  
pneumonia -  
Pig



# Bronchopneumonia: Bacterial

- Generally young, stressed animals
- Predisposition
  - Stress
  - Viral infection
  - Immune deficiency/suppression

# Bronchopneumonia

- Classical stages
  - Hyperemia plus edema (mins-hrs)
  - Red hepatization (2-3 days)
  - Gray hepatization (5-7 days)
  - Resolution (7 days to 4 weeks)

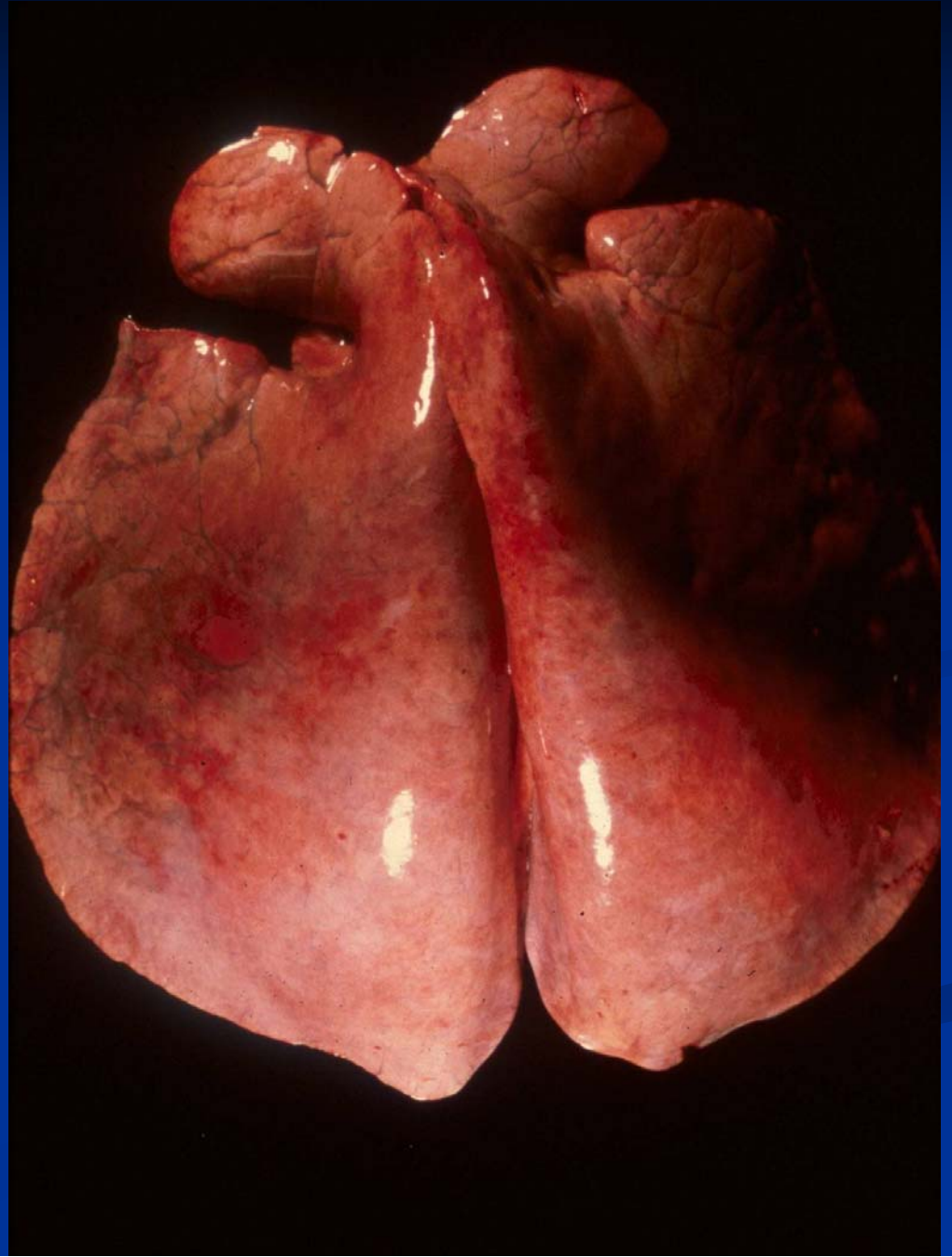
# Bronchopneumonia

- Common sequelae
  - Death (hypoxemia, toxemia)
  - Septicemia
  - Pleuritis
  - Chronic bronchopneumonia
  - Abscesses
  - Bronchiectasis
  - Atelectasis

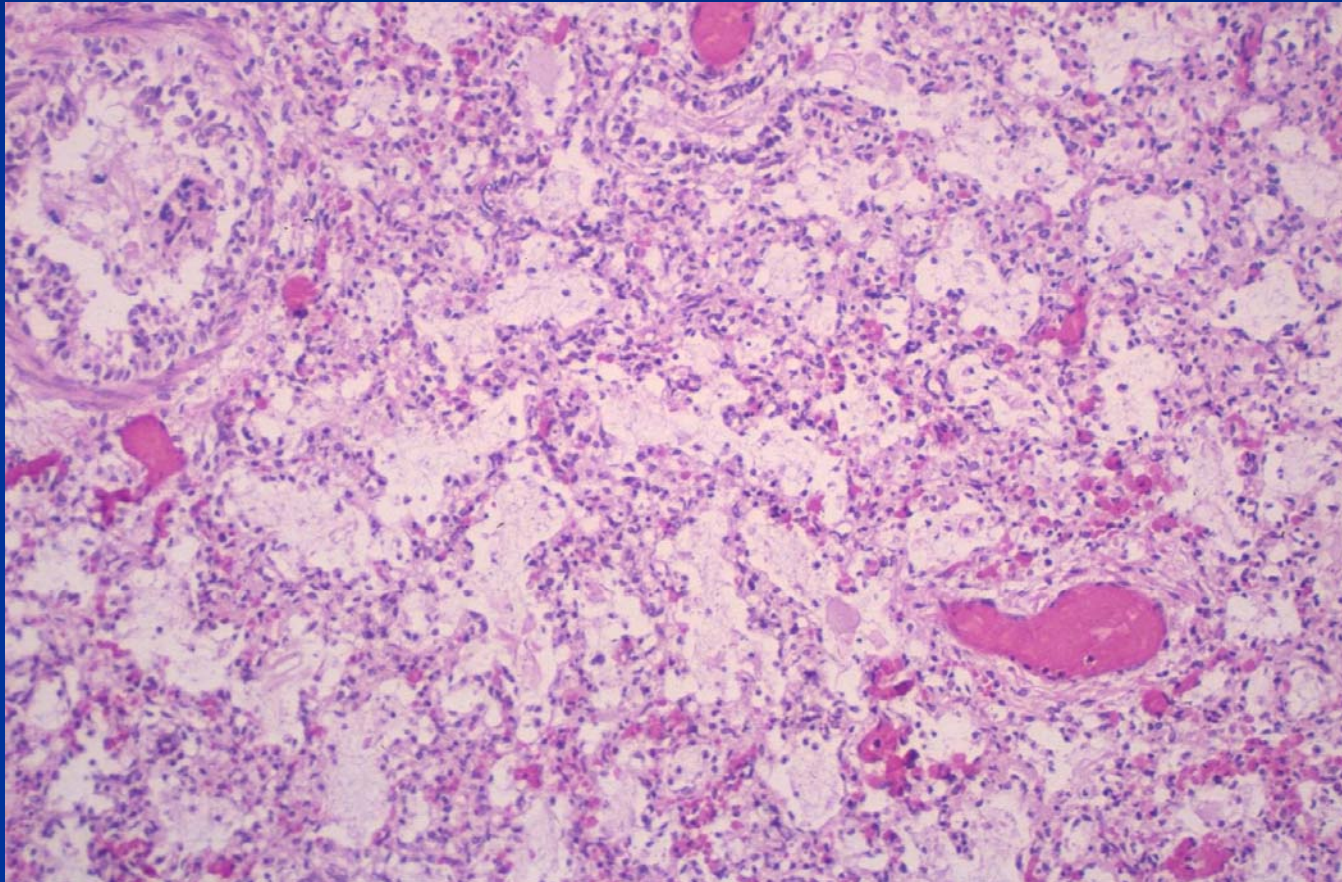
# Interstitial Pneumonia

- Inflammation of interstitium-generally without airway involvement
- Diffuse distribution
- Non-suppurative
- Exposure via blood or inhalation

# Interstitial Pneumonia - Horse



# Interstitial Pneumonia - Foal



# Etiology of Interstitial Pneumonias

- Viral
- Bacterial
- Mycotic
- Protozoal
- Other parasitic
- Toxic
- Hypersensitivity



# Interstitial Pneumonia

- Lesion lacks etiologic specificity
- Acute exudative phase (ARDS)
- Subacute proliferative phase (3 days)
- Chronic phase (7-14 days)

# Subacute Interstitial Pneumonia - Cow

