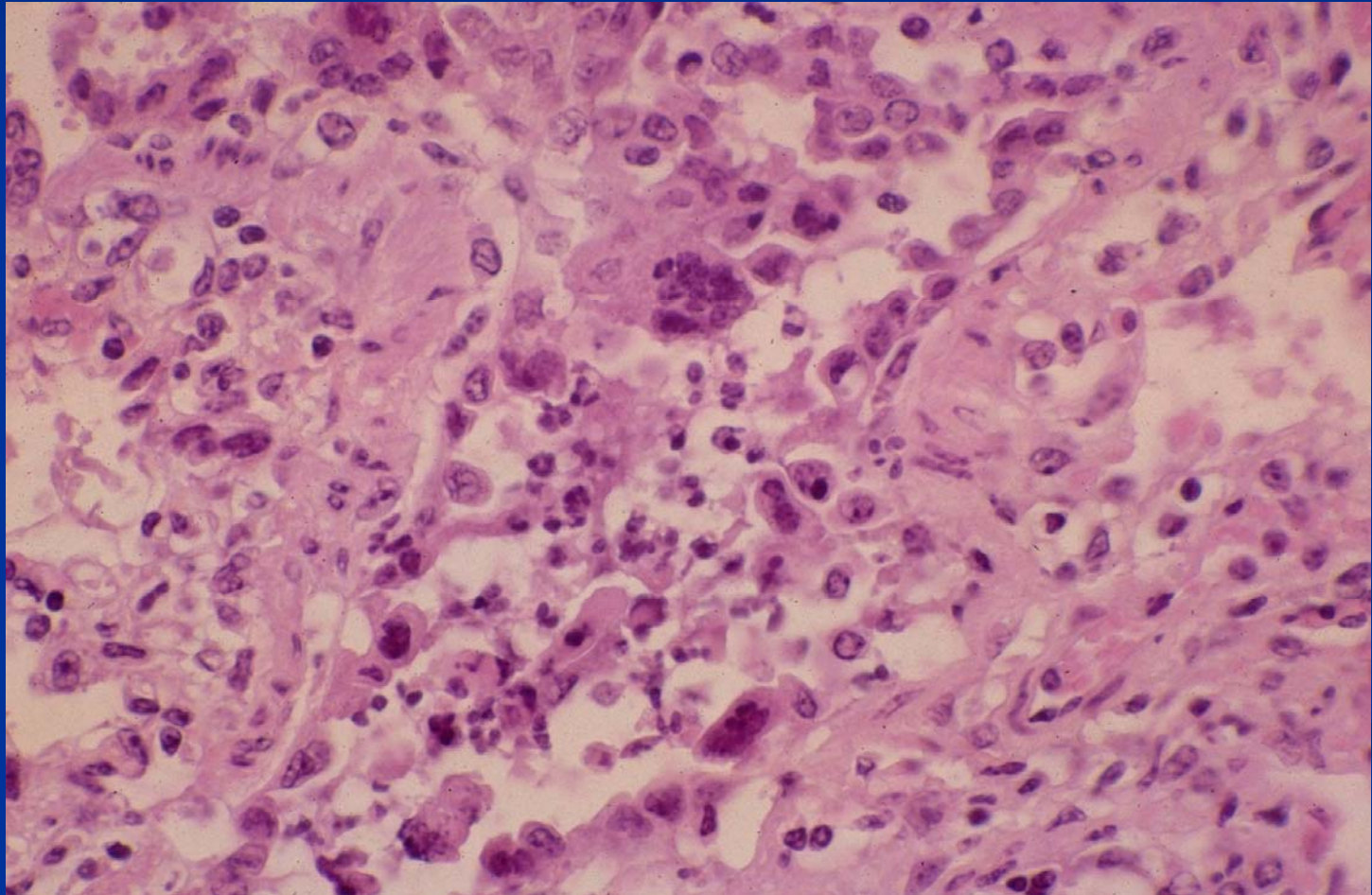


Bovine Respiratory Syncytial Virus (BRSV)



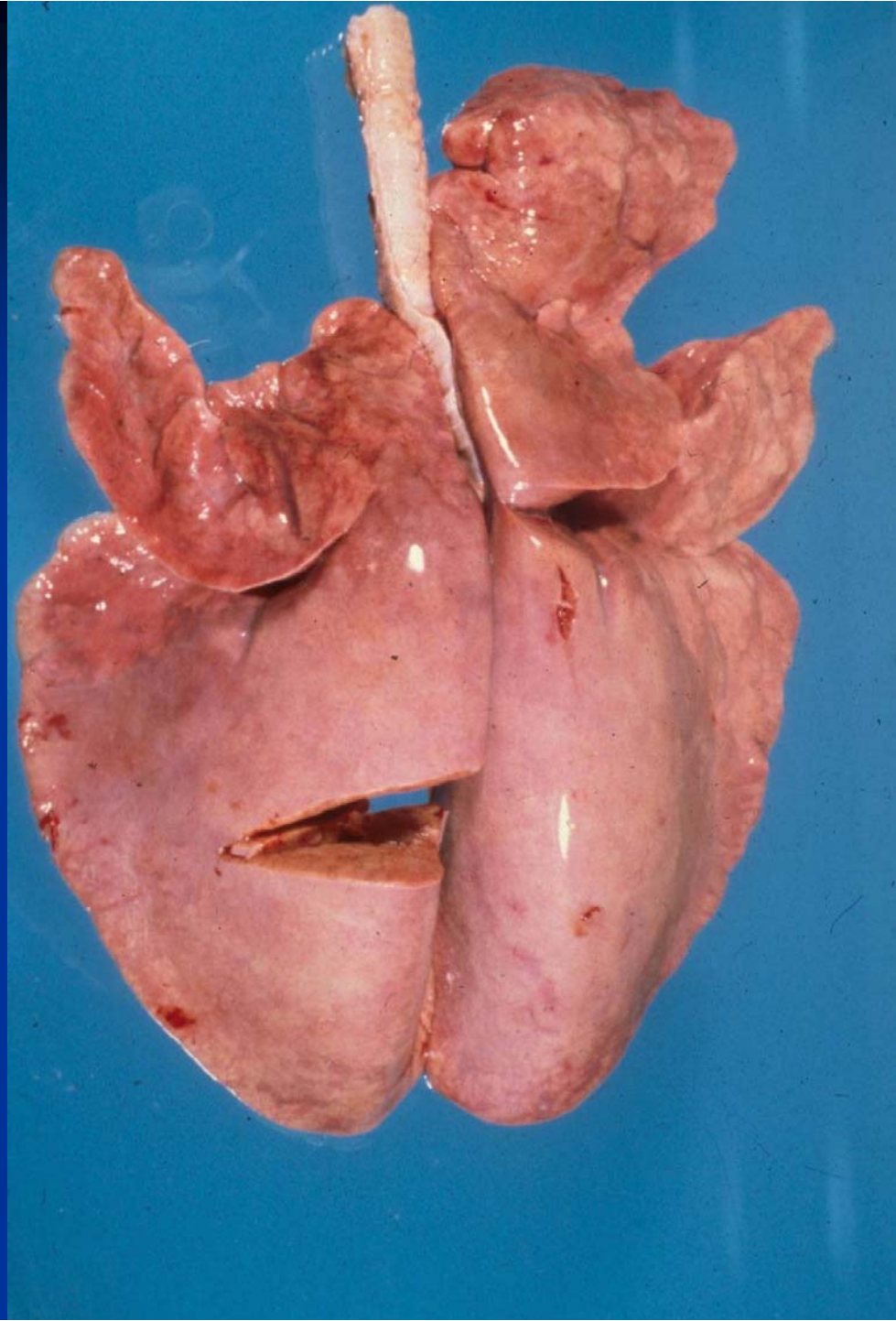
Retrovirus Infections of Goats and Sheep

- Ovine Progressive Pneumonia (Maedi)
- Caprine Arthritis- Encephalitis (CAE)
- Ovine Pulmonary Adenomatosis/Ovine Pulmonary Carcinoma (Jaagsiekte)

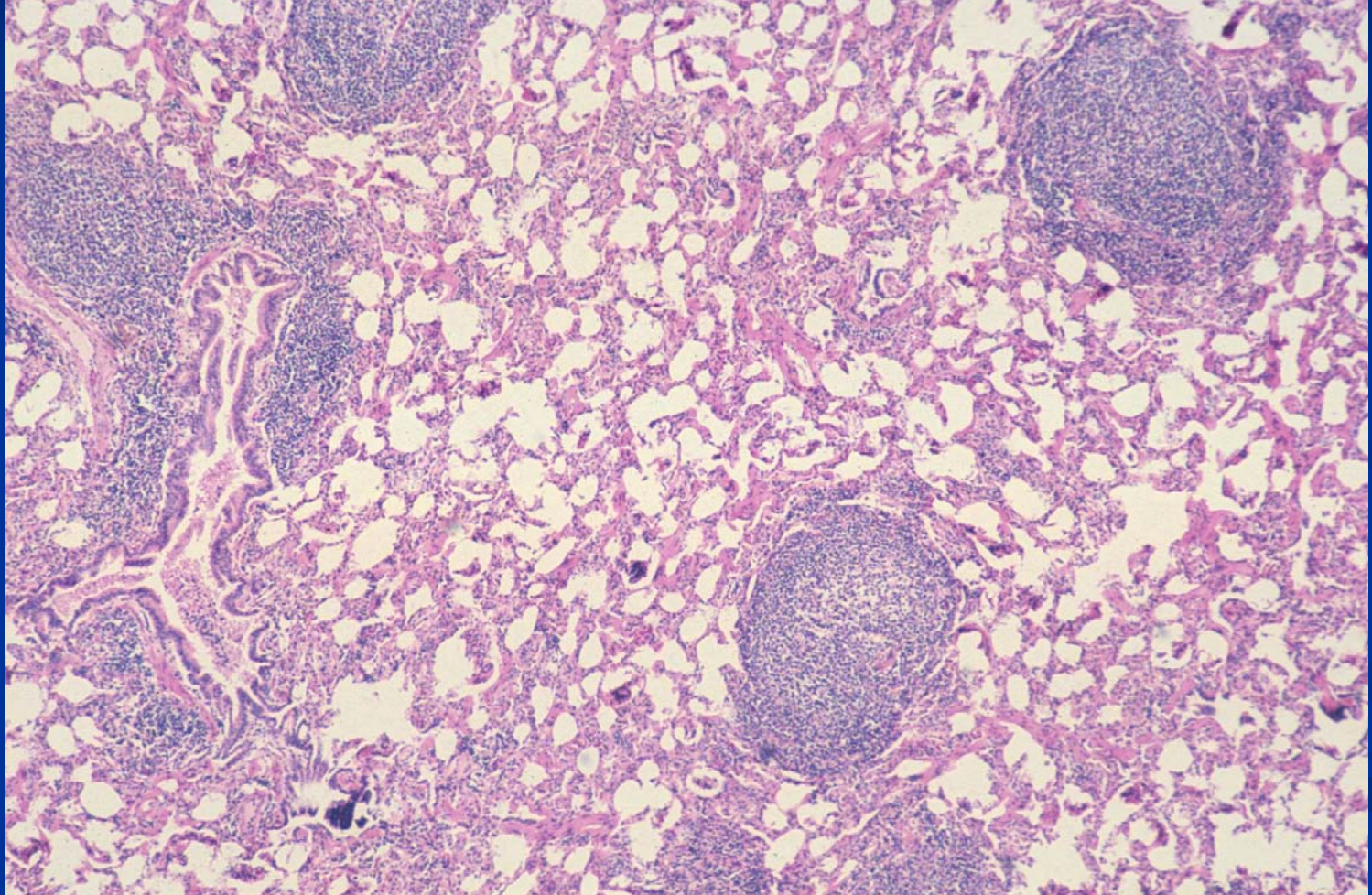
Ovine Lentivirus-Induced Lymphoid Interstitial Pneumonia (LIP)

- Etiology: Lentivirus, 'Slow' virus (2-3 yr incubation)
- Widespread infection but few clinical cases
- Most countries except Australia and New Zealand
- Pulmonary form also known as Maedi, ovine progressive pneumonia (OPP)
- Can affect CNS (Visna), mammary tissue, joints, etc
- Pathology
 - Severe chronic interstitial pneumonia
 - Marked BALT and smooth muscle proliferation
 - Tracheobronchial lymph nodes enlarged

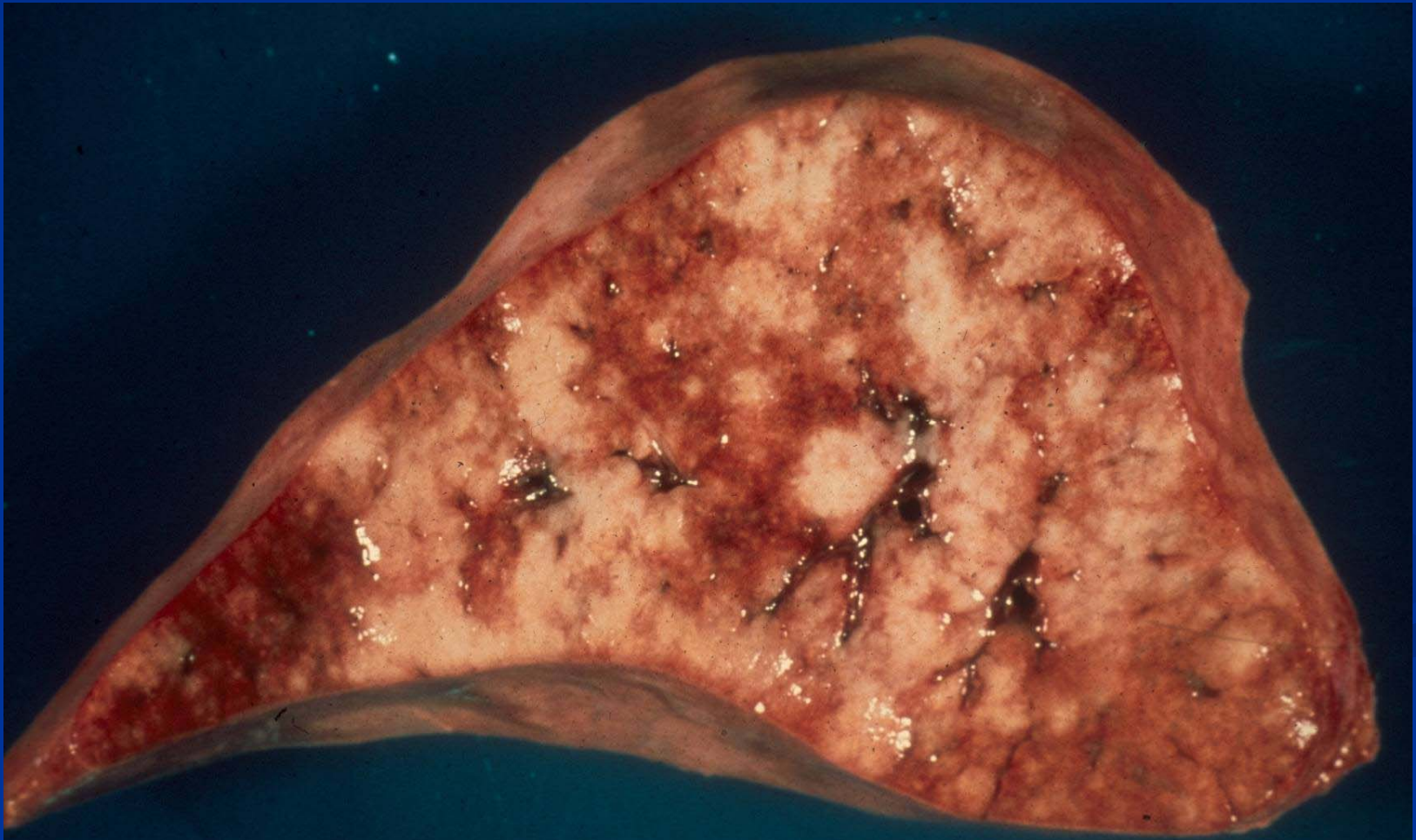
Ovine
Lentivirus-
Induced
Lymphoid
Interstitial
Pneumonia
(LIP)



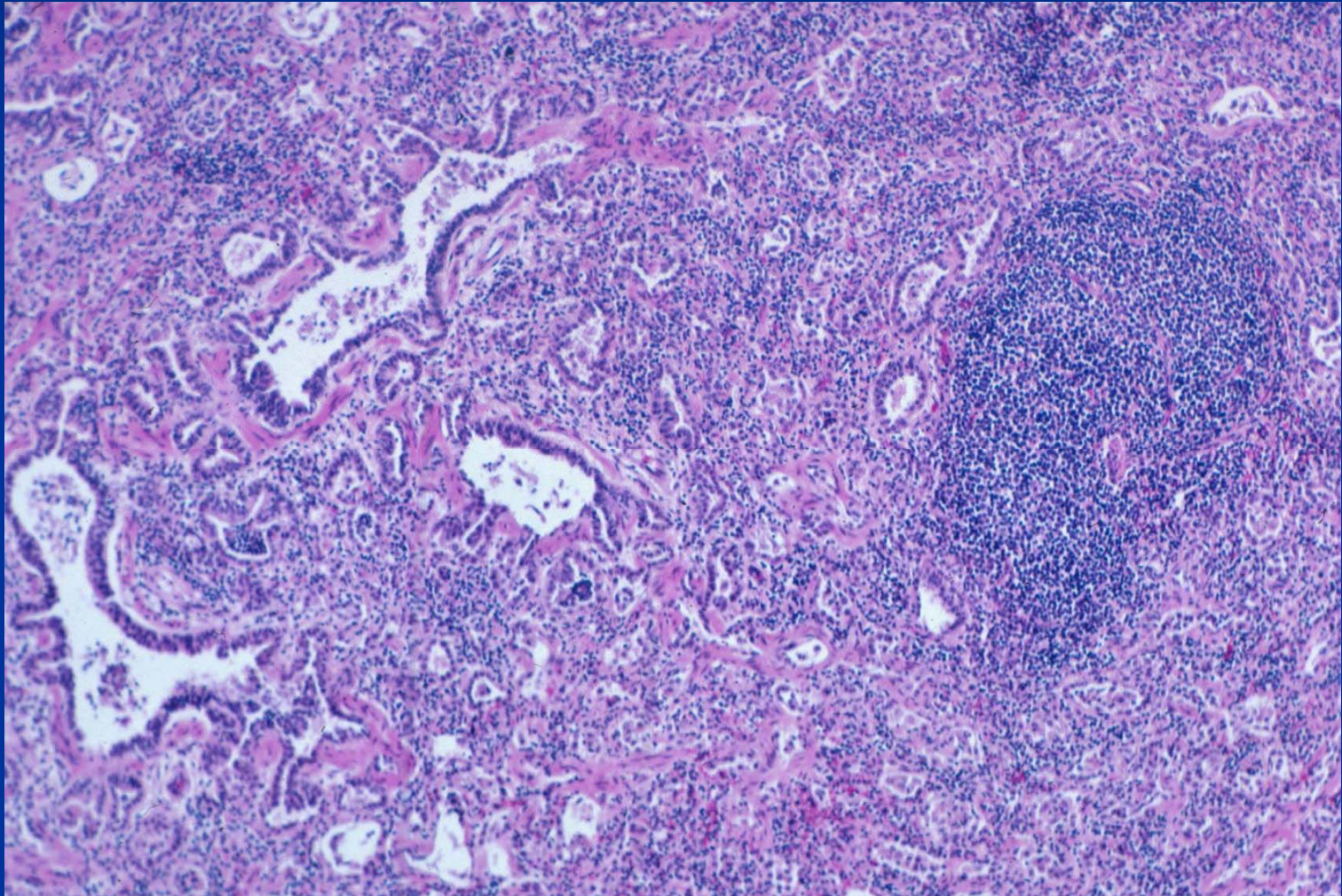
Ovine Lentivirus-Induced Lymphoid Interstitial Pneumonia (LIP)



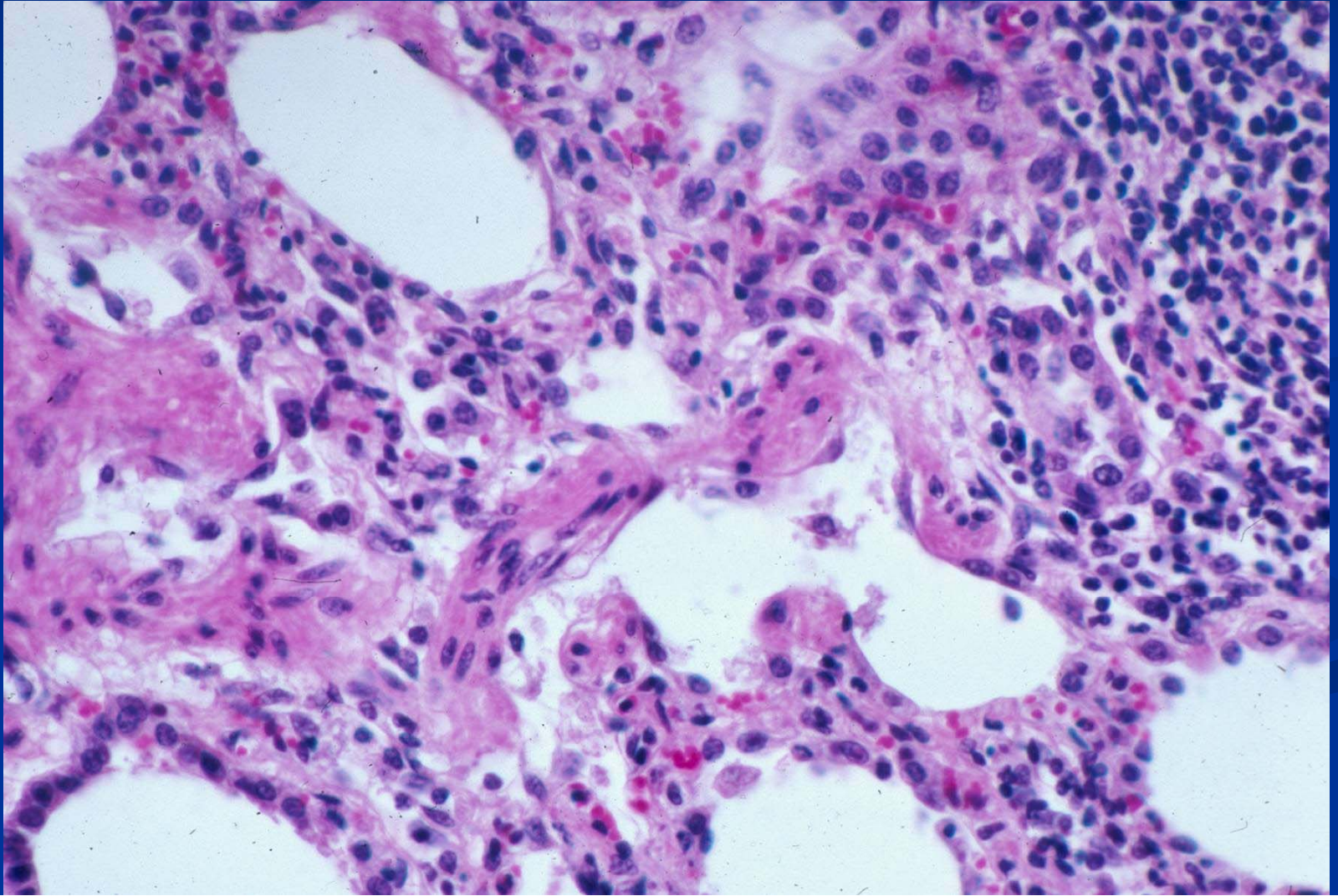
Ovine Lentivirus-Induced Lymphoid Interstitial Pneumonia (LIP)



Ovine Lentivirus-Induced Lymphoid Interstitial Pneumonia (LIP)



Ovine Lentivirus-Induced Lymphoid Interstitial Pneumonia (LIP)



Barbary Sheep in Australia

- Interstitial pneumonia
- BALT hyperplasia
- Cause? LIP? Mycoplasma?

Caprine Arthritis- Encephalitis (CAE)

- Etiology: Lentivirus of goats
- Disease: similar to LIP in sheep
- Transmission horizontal and vertical: in utero, milk
- Australia, US, Canada, Europe
- Disease
 - Chronic interstitial pneumonia, lymphocytic (adult)
 - Tracheobronchial lymph nodes enlarged
 - Arthritis, mastitis (adult)
 - Encephalitis (2 - 4 mth old)