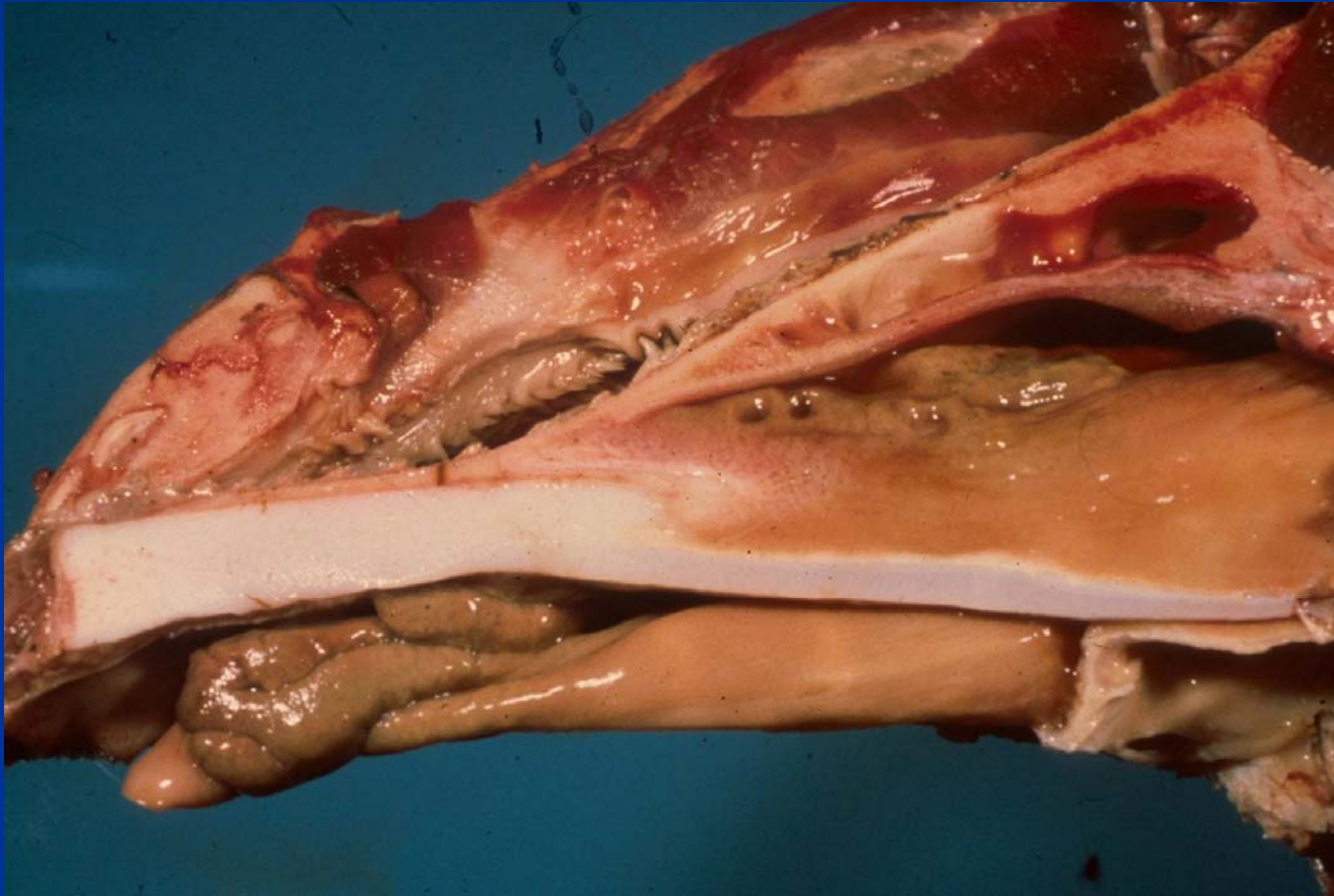


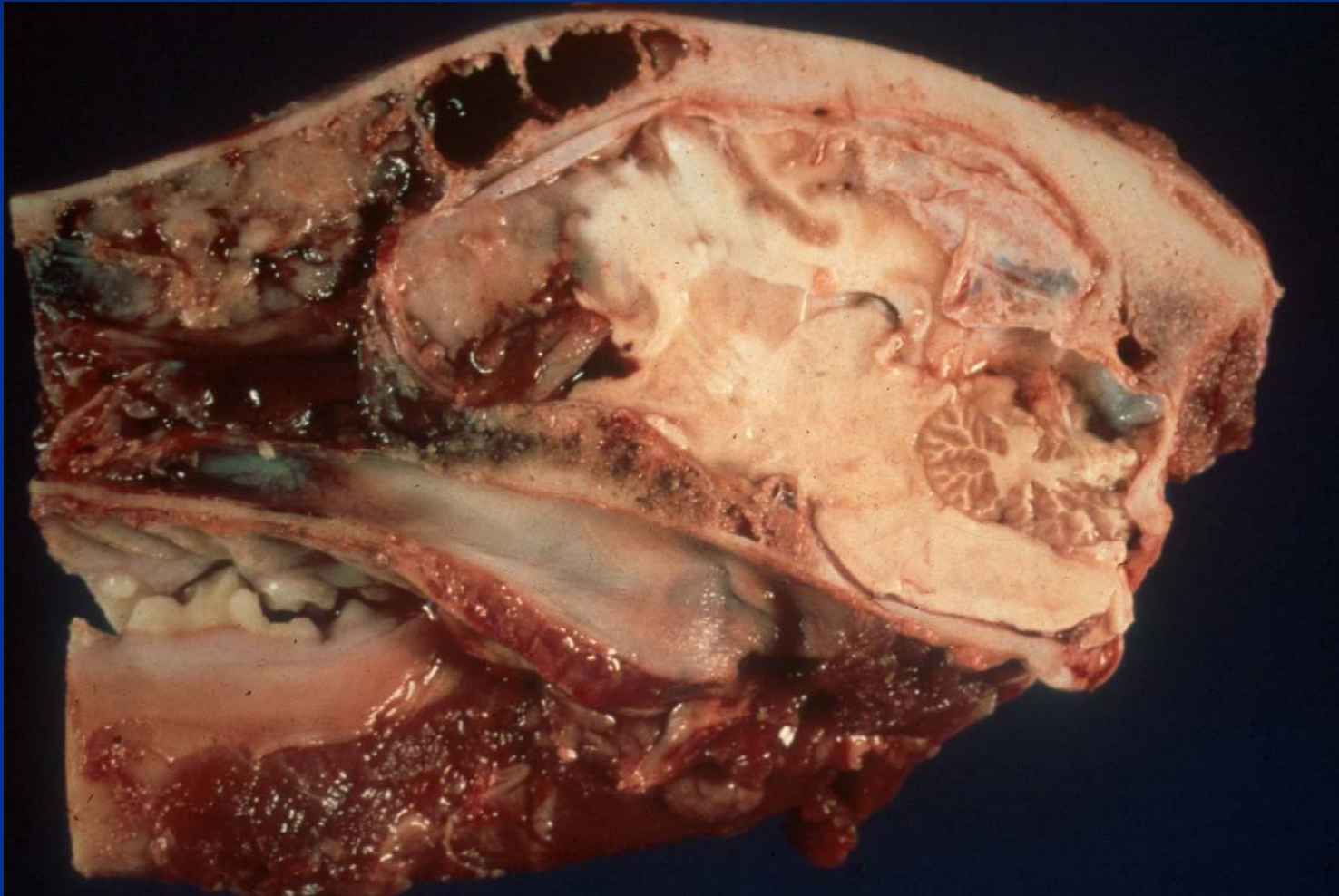
# Proliferative Lesions of Nasal Cavity



# Neoplasia of the Nasal Cavity:

- Mainly dogs, also cats and horses
- 80% malignant
- Clinical Signs
  - Unilateral or bilateral mucoid or bloody discharge
  - Intermittent sneezing
  - Obstruction of nasolacrimal duct
  - Facial swelling
  - Bony erosion
  - Neurologic signs occasionally

# Neoplasia of the Nasal Cavity



# Noninfectious Diseases of Upper Respiratory System

- Smoke inhalation
  - Thermal injury
    - Laryngeal/tracheal necrosis with fibrin
  - Also chemical induced pulmonary edema

# Infectious Upper Respiratory Disease

- Balance of microbial flora upset
- Often viral, especially herpes viruses
- Bacterial disease secondary
- Possible sequella – osteomyelitis, meningitis, otitis

# Infectious Upper Respiratory Disease

- Cattle
  - \*Infectious bovine rhinotracheitis (IBR)
- Horses
  - \*Equine rhinopneumonitis
  - Strangles (*Strep equi*)
- Pigs
  - \*Pseudorabies
  - Atrophic rhinitis (*Past multocida*)

\*Herpes viruses

# Infectious Upper Respiratory Disease

- Dogs
  - Canine distemper virus
  - Infectious tracheobronchitis
  - Aspergillosis
- Cats
  - \*Feline viral rhinotracheitis
  - Calicivirus
  - Cryptococcosis

\*Herpes viruses

# Pathology of Respiratory System

- Upper Respiratory Tract
- **Lower Respiratory Tract**
  - Lung lesion distribution
  - Developmental Abnormalities
  - Non Infectious Disease
  - Pneumonias
  - Neoplasia
- Pleura and thoracic cavity



# Gross Lung Exam

- Lesion distribution
  - Diffuse
  - Locally extensive
  - Focal/multifocal

# Diffuse Pulmonary Disease

- Edema
- Atelectasis
- Interstitial pneumonia
- Mineralization
- Emphysema

