

Head and neck excoriation from self-trauma, due to severe pruritus associated with food allergy.



Pinnal fissures in a dog with ischemic dermatopathy (due to rabies vaccine reaction)

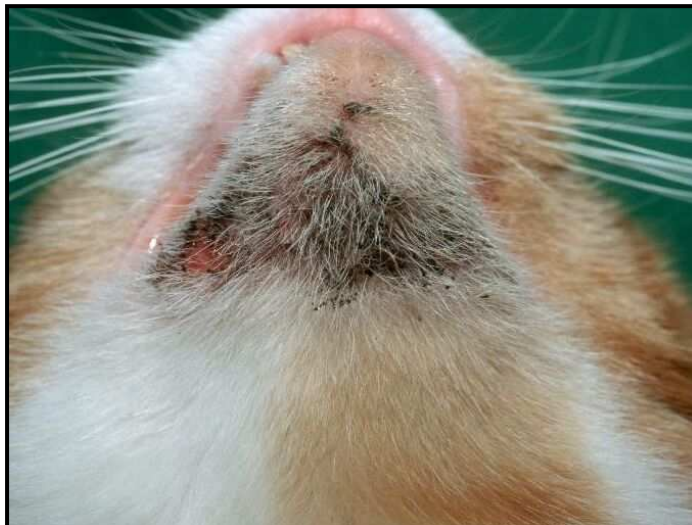
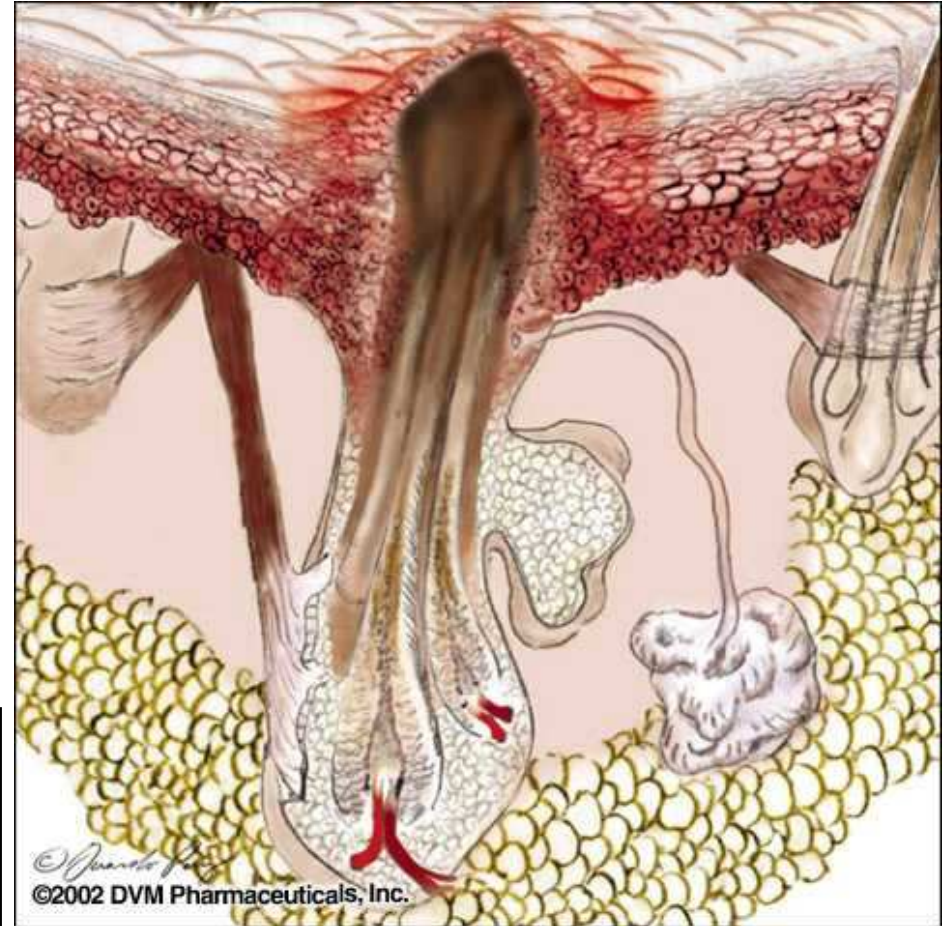






Follicular plugging  
(comedo or “blackhead”)

Comedones due to demodicosis



Feline acne



Deep thermal burns heal with scarring alopecia and either hyperpigmentation or leukoderma, depending upon damage to melanocytes



Periocular leukotrichia, and leukoderma of the lips & nasal planum,  
due to vitiligo





Localized/focal alopecia on top of the head, due to chronic traction from wearing hair barrettes (Tibetan terrier)

Multifocal alopecia due to black hair follicular dysplasia in a Dalmation (note all spots are hairless!)





Regional alopecia and hyperpigmentation due to canine recurrent flank alopecia (CRFA) in a Bulldog



Diffuse thinning alopecia of the trunk in a Pomeranian with Cushing's disease

Generalized (complete) alopecia due to congenital Alopecia Universalis in a Beagle/Labrador cross





“Patchy” or “moth eaten” alopecia due to folliculitis in a Dalmation.....this is typical of bacterial folliculitis in short-coated breeds of dogs.

