

Deep dermal zone of separation

HERDA

- Dx: clinical signs
- No diagnostic blood test commercially available for either affected horses or carriers
- Rx: avoid trauma, take parents out of breeding program

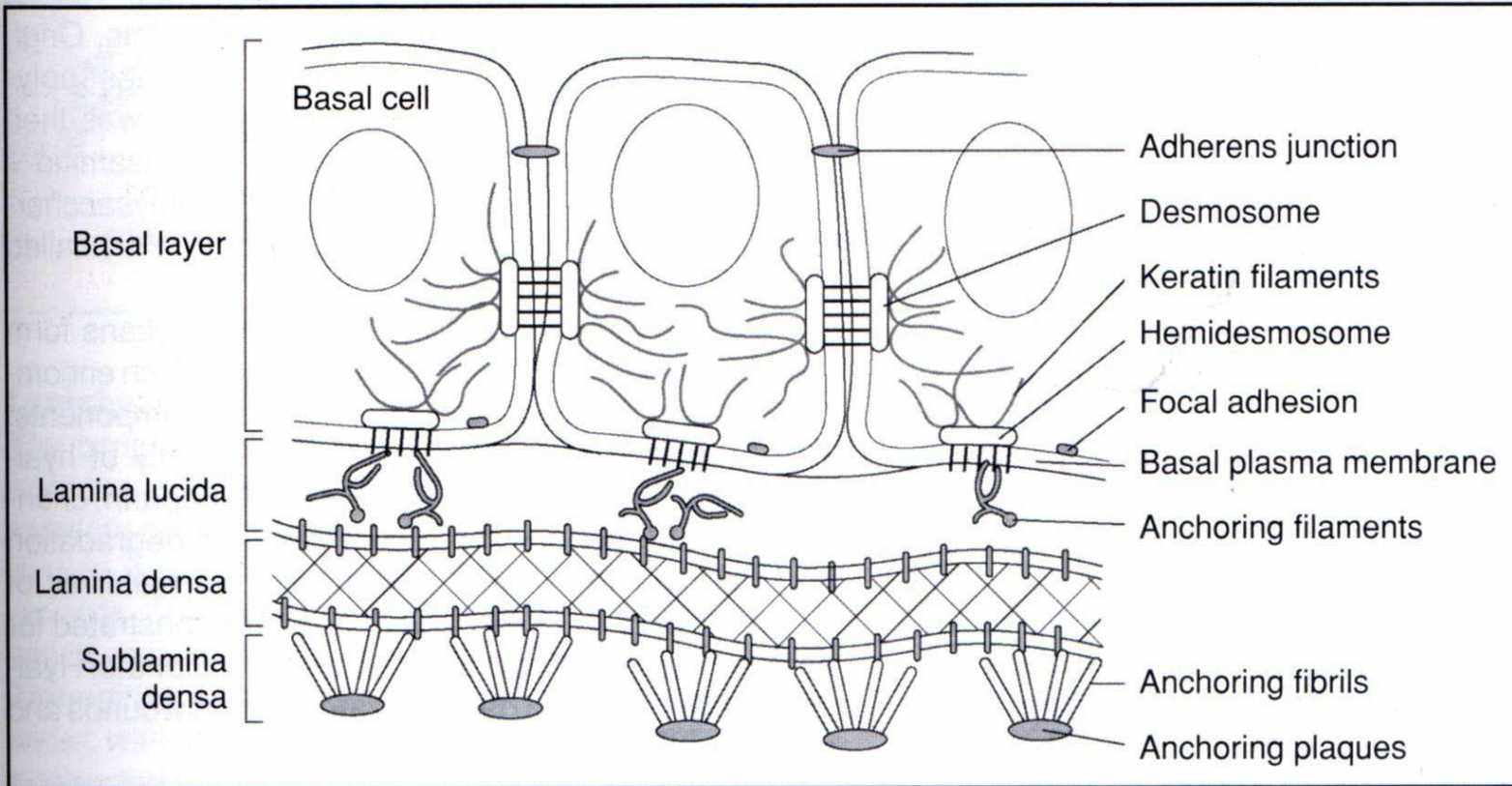
Components of BMZ

- **Hemidesmosomes** of basal cells
- **Lamina lucida**- clear zone seen on electron microscopy
- **Lamina densa**- contains primarily Type IV collagen
- **Sublamina densa**- anchoring fibrils

Hereditary Epidermolysis Bullosa

From superficial to deep

- **EB simplex** – plectin– attaches to keratin IF
 - Cleavage in stratum basale
 - Single case report in one foal
- **Junctional EB** - defect laminin-5
 - Cleavage in lamina lucida
 - American Saddlebreds
 - Belgian draft horses
- **Dystrophic EB**- anchoring fibrils (Collagen VII)
 - Cleavage in superficial dermis

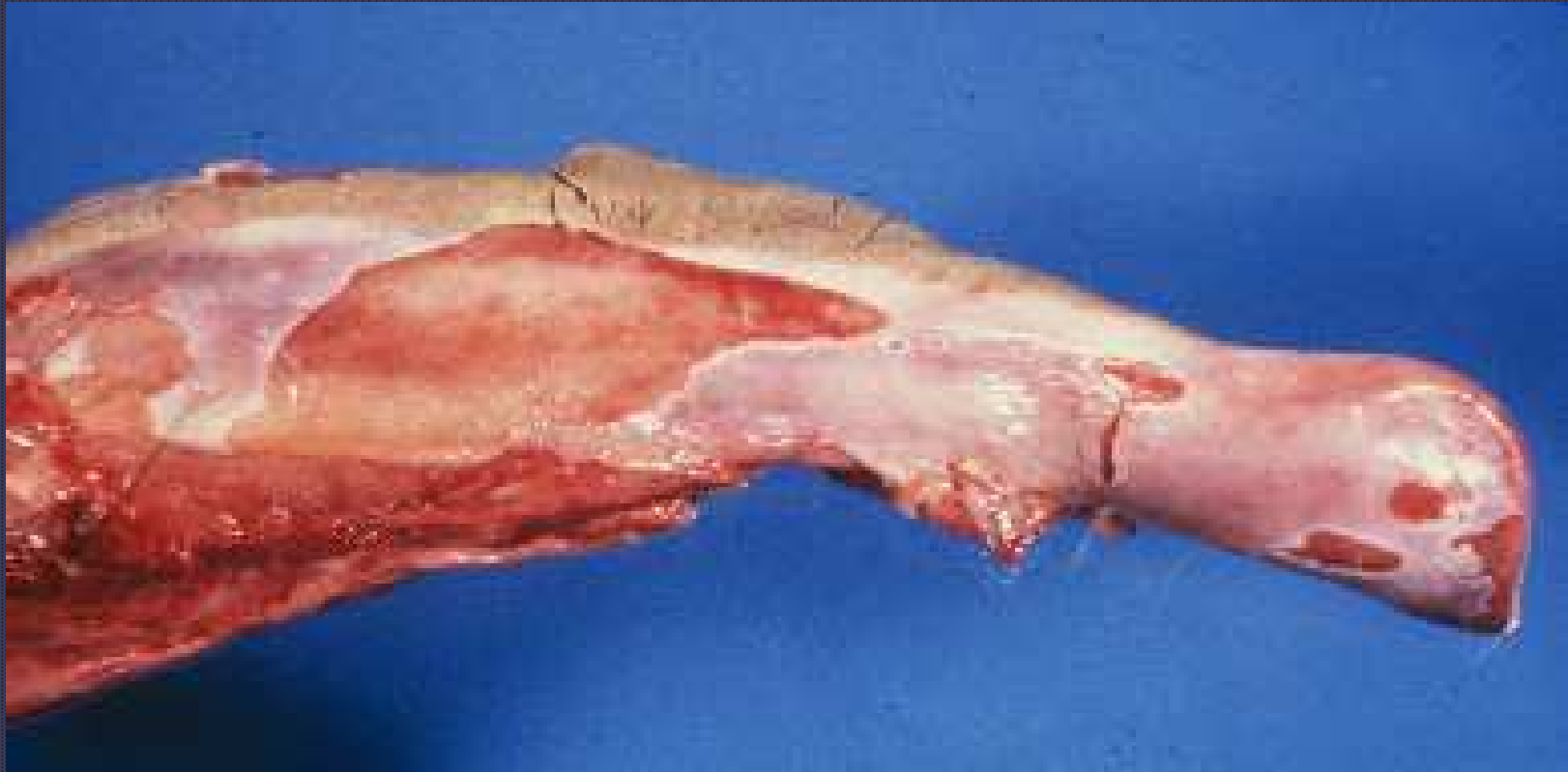


1.13

Diagrammatic representation of structural components of the dermoepidermal junction.
© Anita Patel.

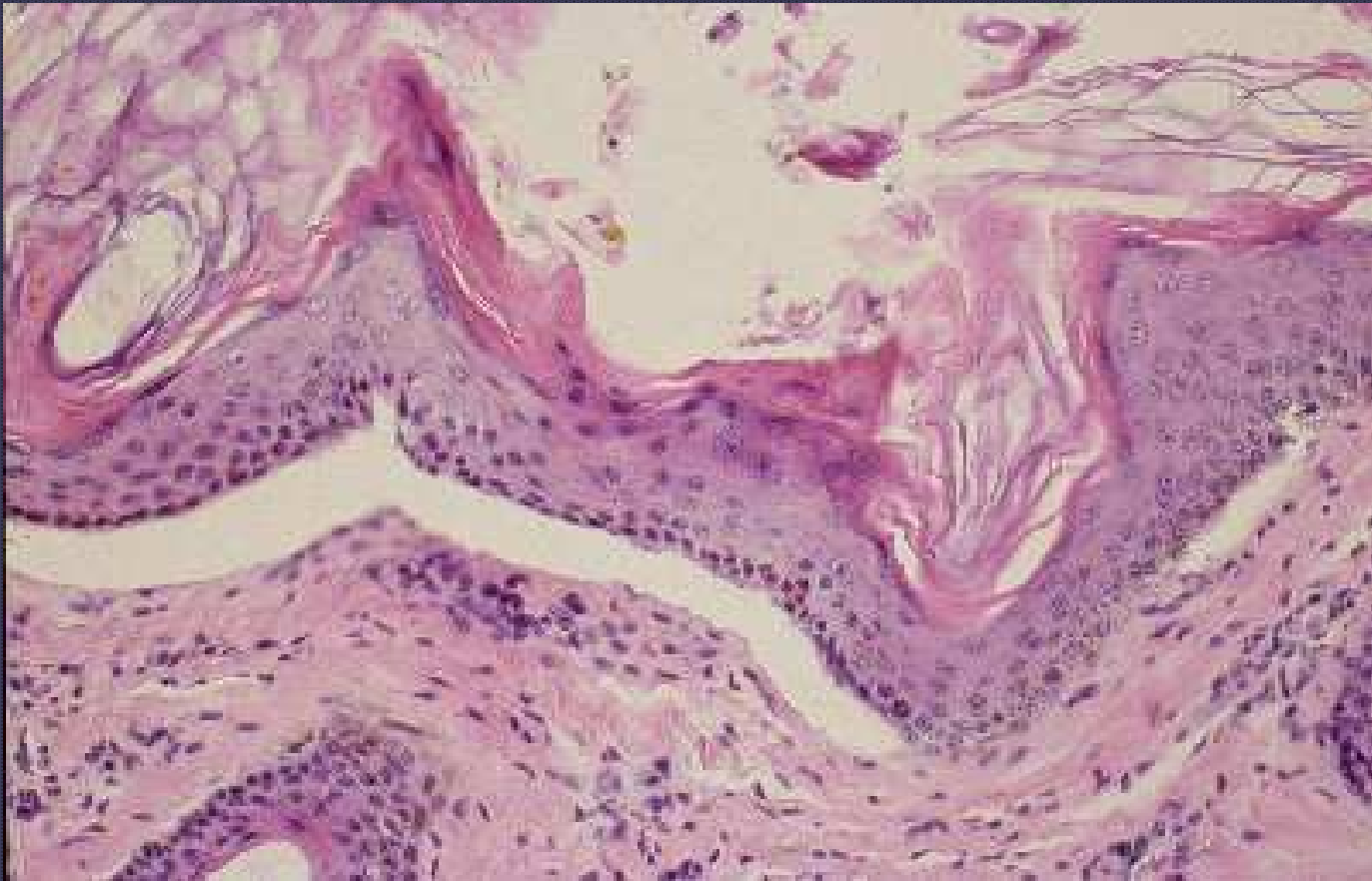
Epidermolysis Bullosa







Epidermolysis Bullosa



Aplasia Cutis Congenita (Epitheliogenesis Imperfecta)



Stannard's Notes Vet Derm 2000 11: 211-215