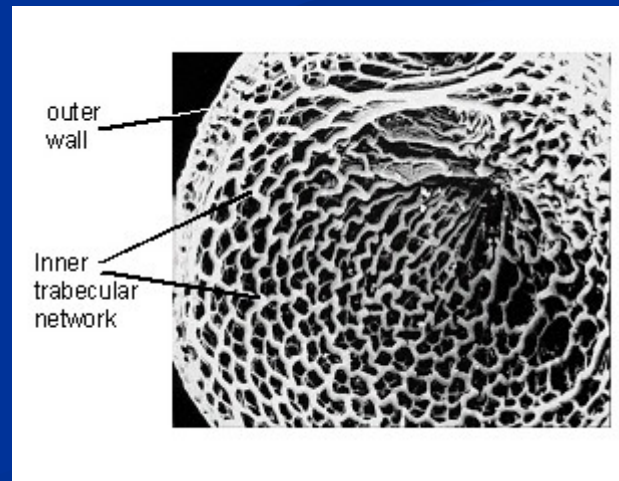
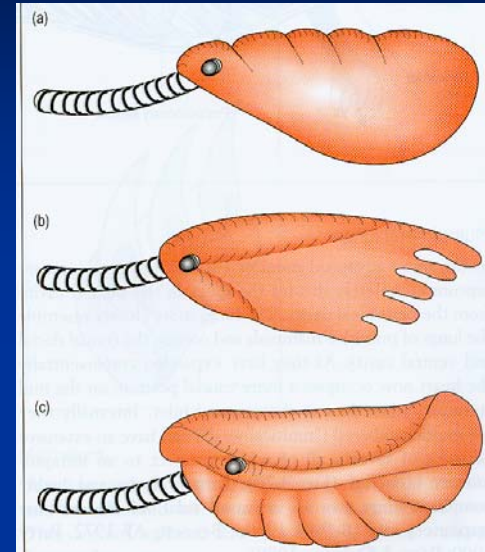


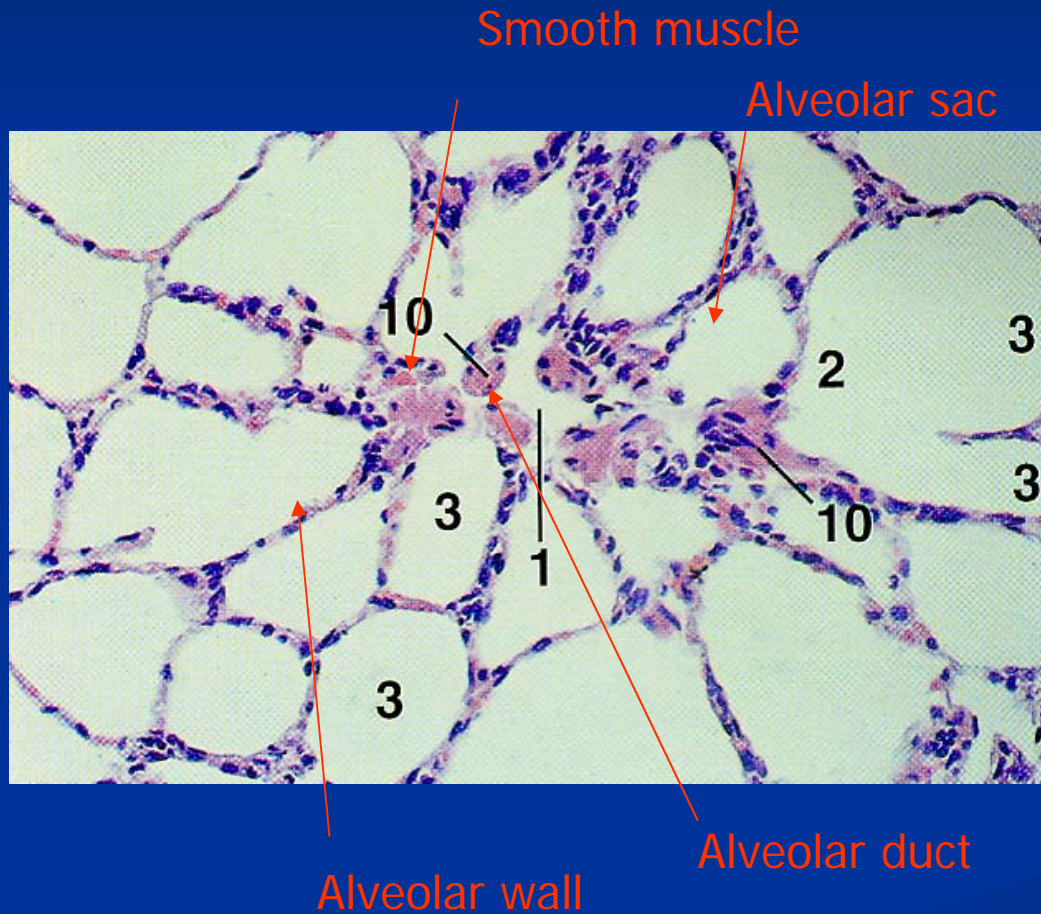
Reptiles

■ Reptiles

- Faveoli
- Smooth muscle in the lung walls
- Classified according to chambers
 - Unicameral
 - Paucicameral
 - Multicameral

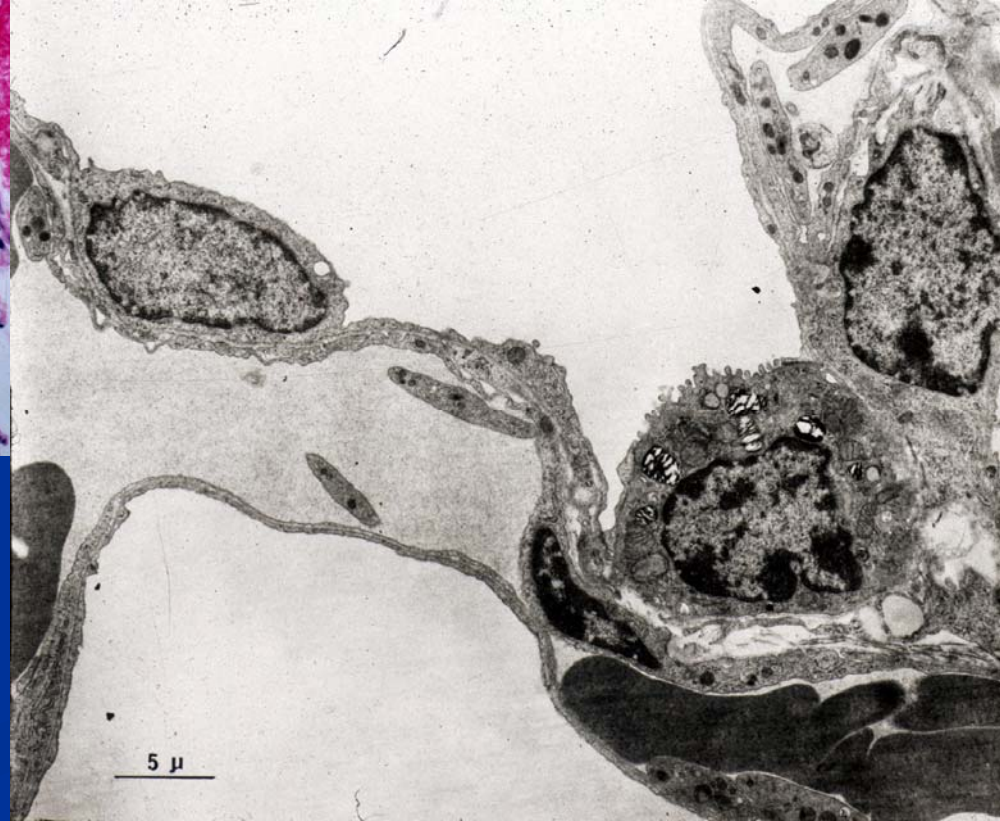
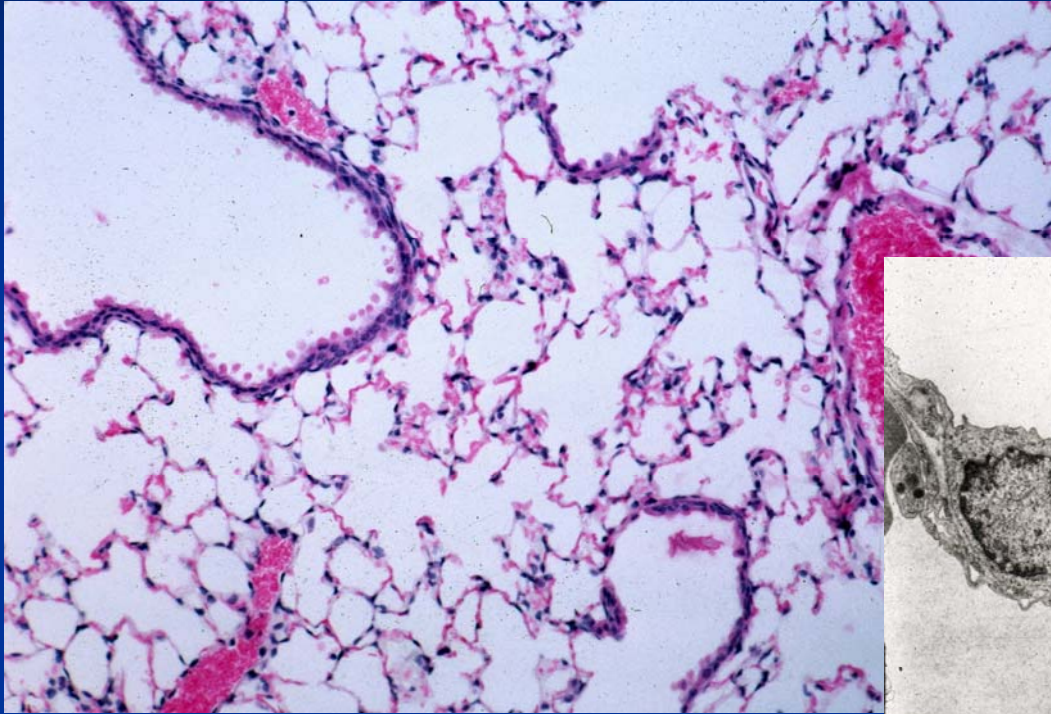


Pulmonary Region - Mammalian



- Acinus
 - Branching respiratory bronchiole
 - Alveolar duct
 - Alveolar sac
 - Alveoli

Lung Structure



Lung Cell Types – about 36

- Alveolar cell types
 - Epithelium-Type I and Type II pneumocytes
 - Capillary endothelium (nonfenestrated)
 - Macrophages
- Interstitial cells
 - Fibroblasts
 - Contractile cells (myofibroblasts)
 - Interstitial macrophages
 - Dendritic cells (antigen presenting)

Alveoli

- Pulmonary alveolar macrophages
- Blood-air barrier
 - At minimal
 - Surfactant
 - Type 1 pneumocyte
 - Fused basal lamina
 - Capillary endothelial cell
- NO lymphatics

