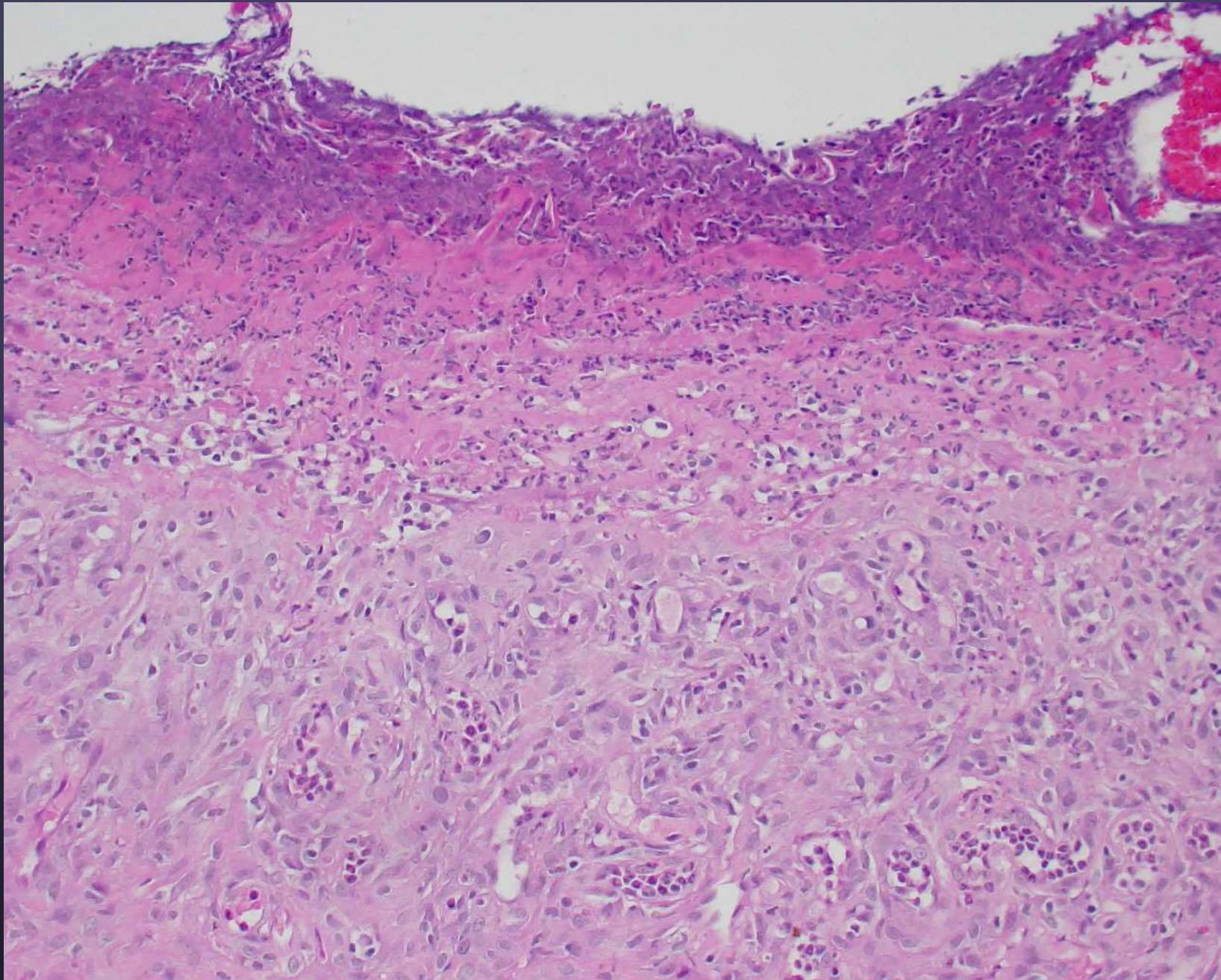




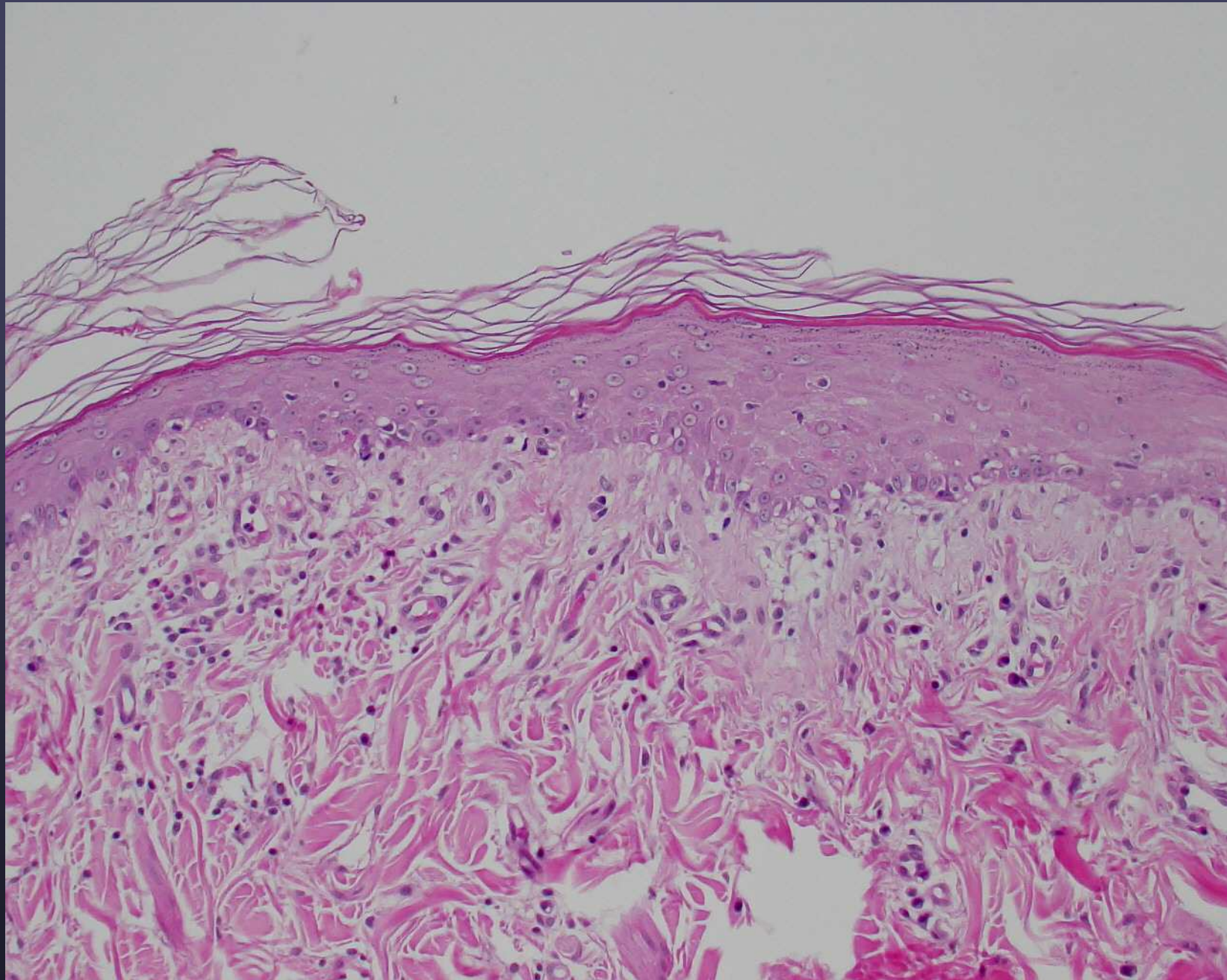
Vesicular lupus (aka ulcerative dermatosis) of Collie and Sheltie



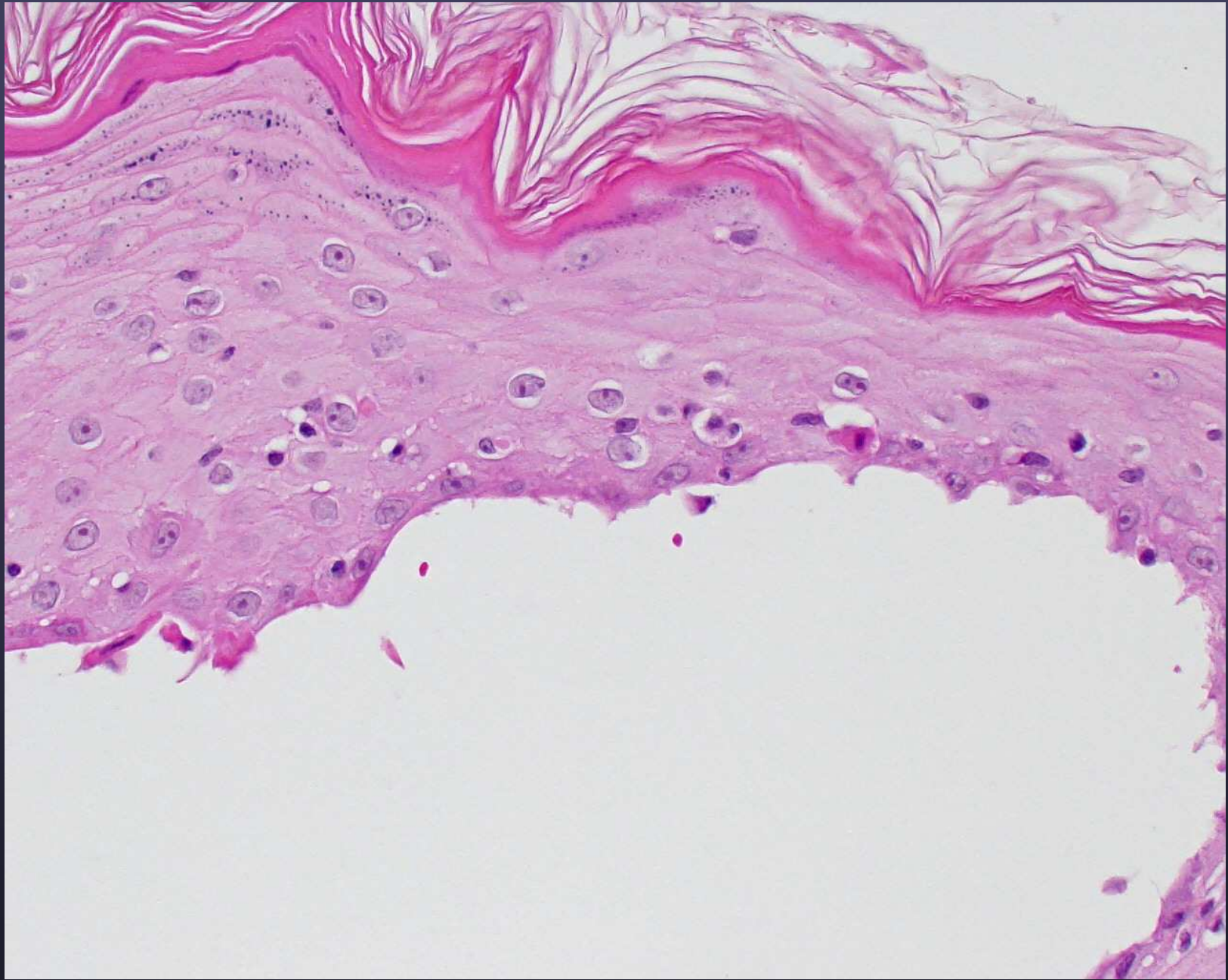
Vesicular lupus (aka ulcerative dermatosis) of Collie and Sheltie



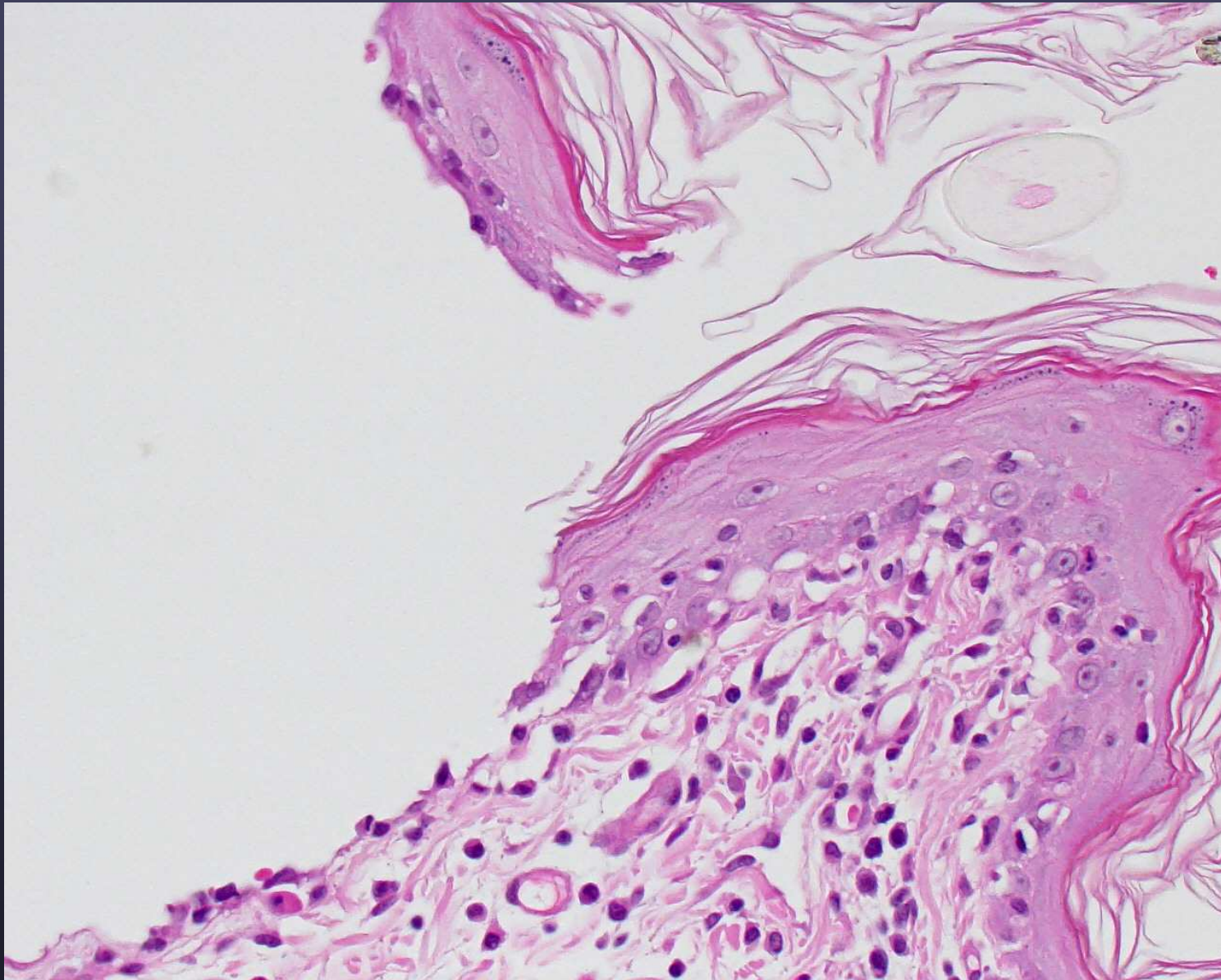
Ulcer- may be better to use elliptical biopsies



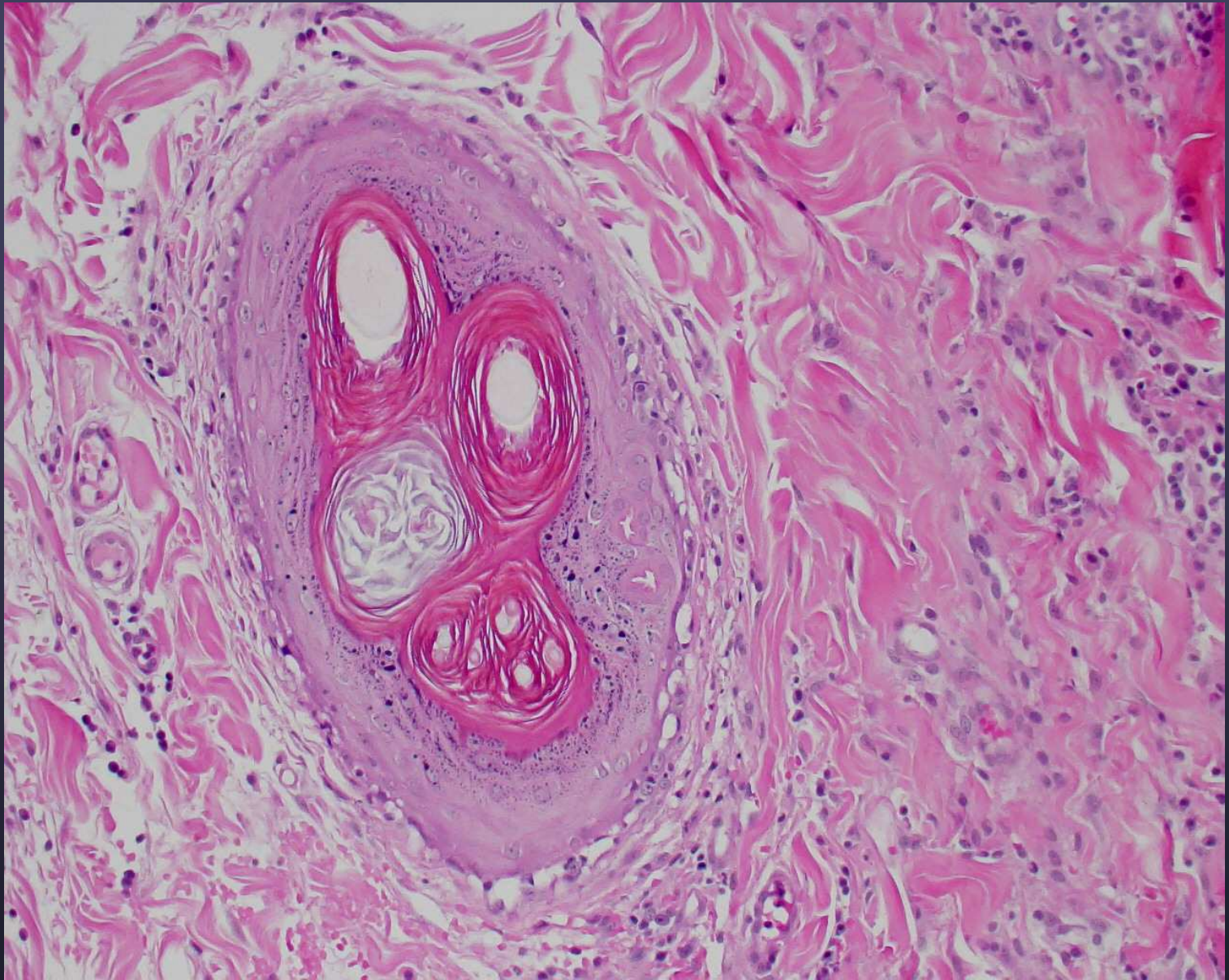
Vesicular lupus- cell poor interface



Cell poor interface with clefting in vesicular lupus



Cell poor interface with clefting in vesicular lupus



Vesicular lupus: Hair follicle with cell poor interface

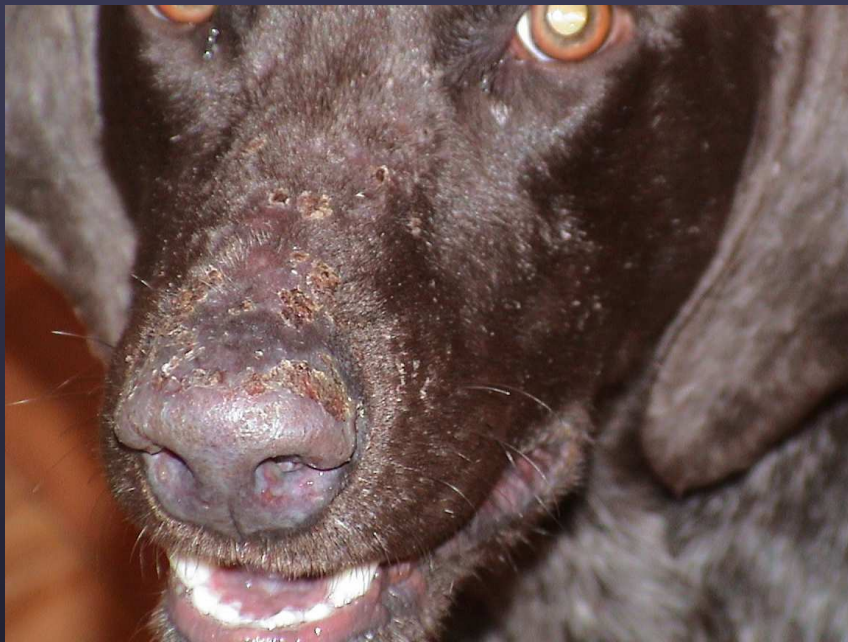
Lupoid dermatosis of GSP (cutaneous exfoliative lupus erythematosus)

- Identified as early as 6-8 weeks of age
- Begins with scaling→ erythema, hair loss, large plate-like adherent scale with atrophy and erosions
- Joint pain (shifting leg lameness, and crouched stance)
- Progresses to generalized and severe Peripheral lymphadenopathy

Histopathology of Lupoid Dermatositis

- Basal cell apoptosis and vacuolar change that also affects ORS
- progresses to sebaceous gland loss; dermal scarring and permanent hair loss
- apoptosis can occur in all epidermal layers and resemble erythema multiforme

GSD Lupoid Derm



Early onset- becomes more severe with time

GSP Lupoid Derm

(cutaneous exfoliative lupus erythematosus)



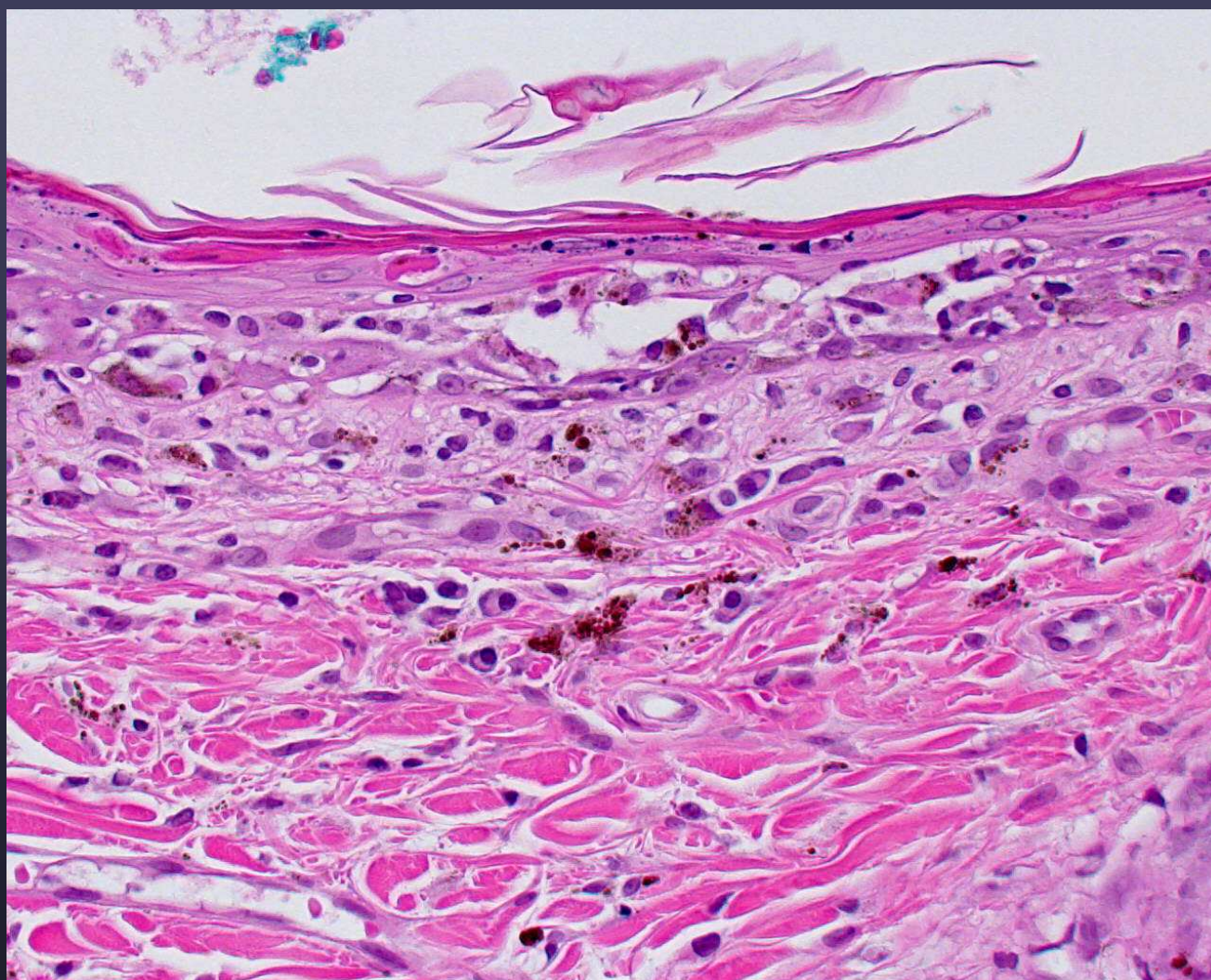
April 2004

GSP Lupoid Derm

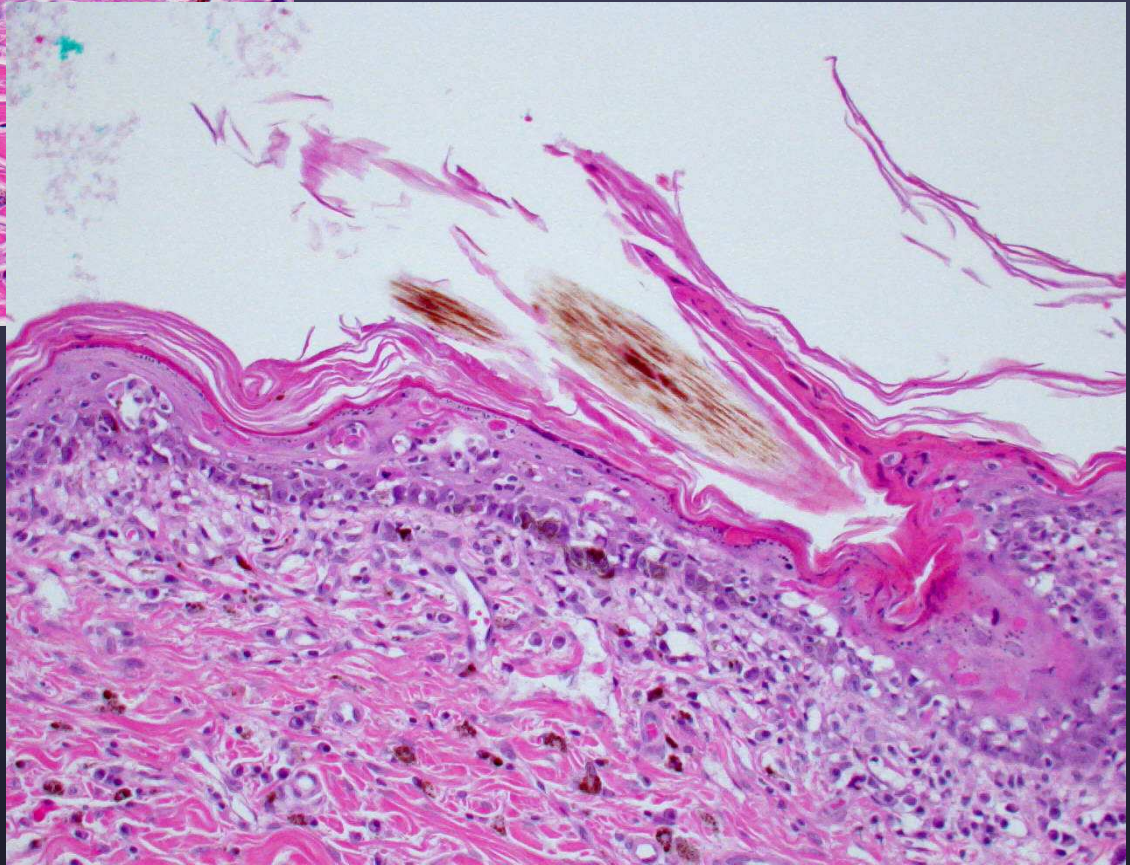
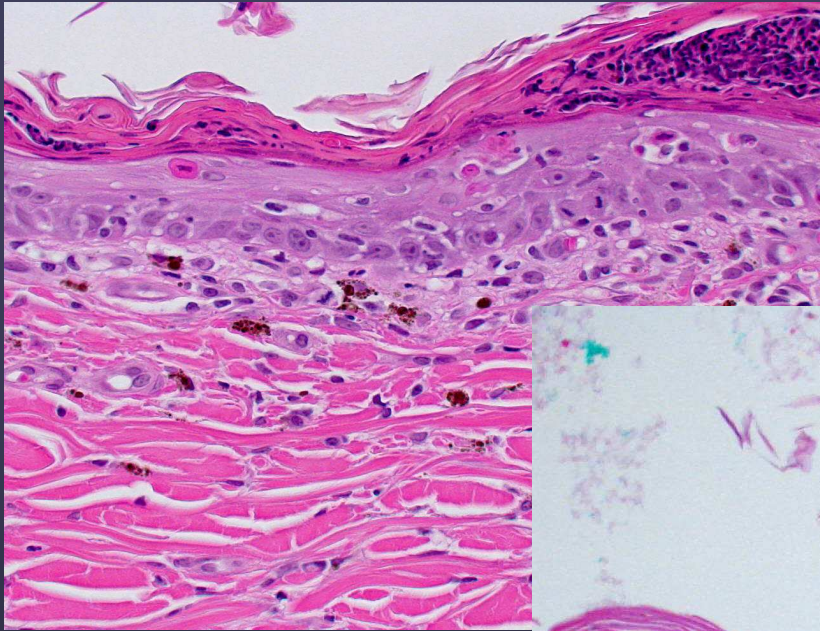
(cutaneous exfoliative lupus erythematosus)



April 2004



Exfoliative vesicular lupus of GSP



Exfoliative vesicular lupus of GSP