



Post-vaccinal ischemic dermatopathy

Familial in collies and shelties

- Juvenile-onset; rarely adult-onset cases
- cell poor interface- scattered apoptotic basal keratinocytes with mild vacuolar change (also seen in ORS)
- hair follicles- severe atrophy with prominent glassy membrane
- Smudged dermal collagen
Myositis occasional

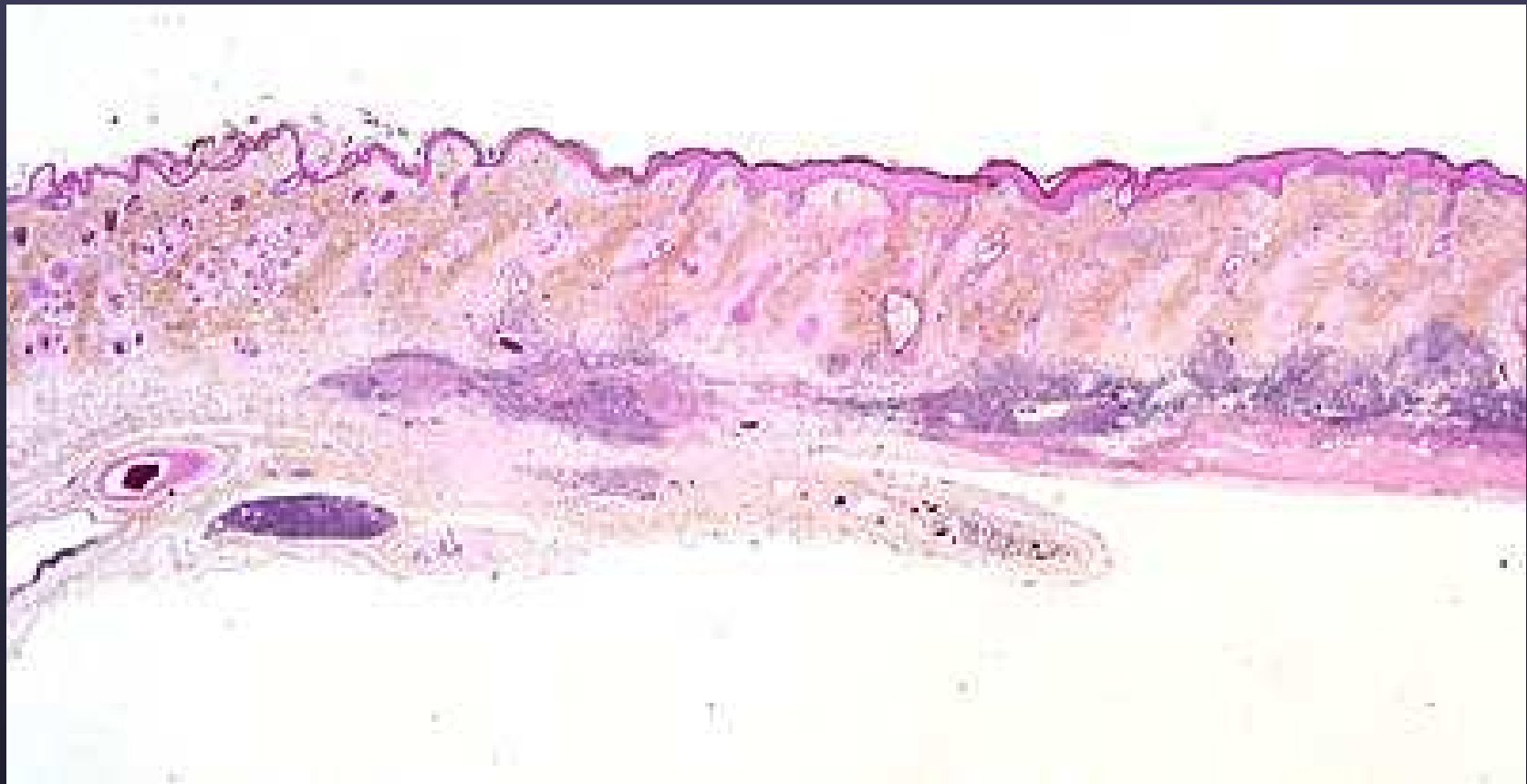
Ischemic Dermatopathy

- Localized vaccine reaction (rabies) with panniculitis
 - Dermal/epidermal changes like dermatomyositis
 - Panniculitis- lymphoplasmacytic with lymphoid follicles with foamy macrophages +/- blue-gray vaccine product

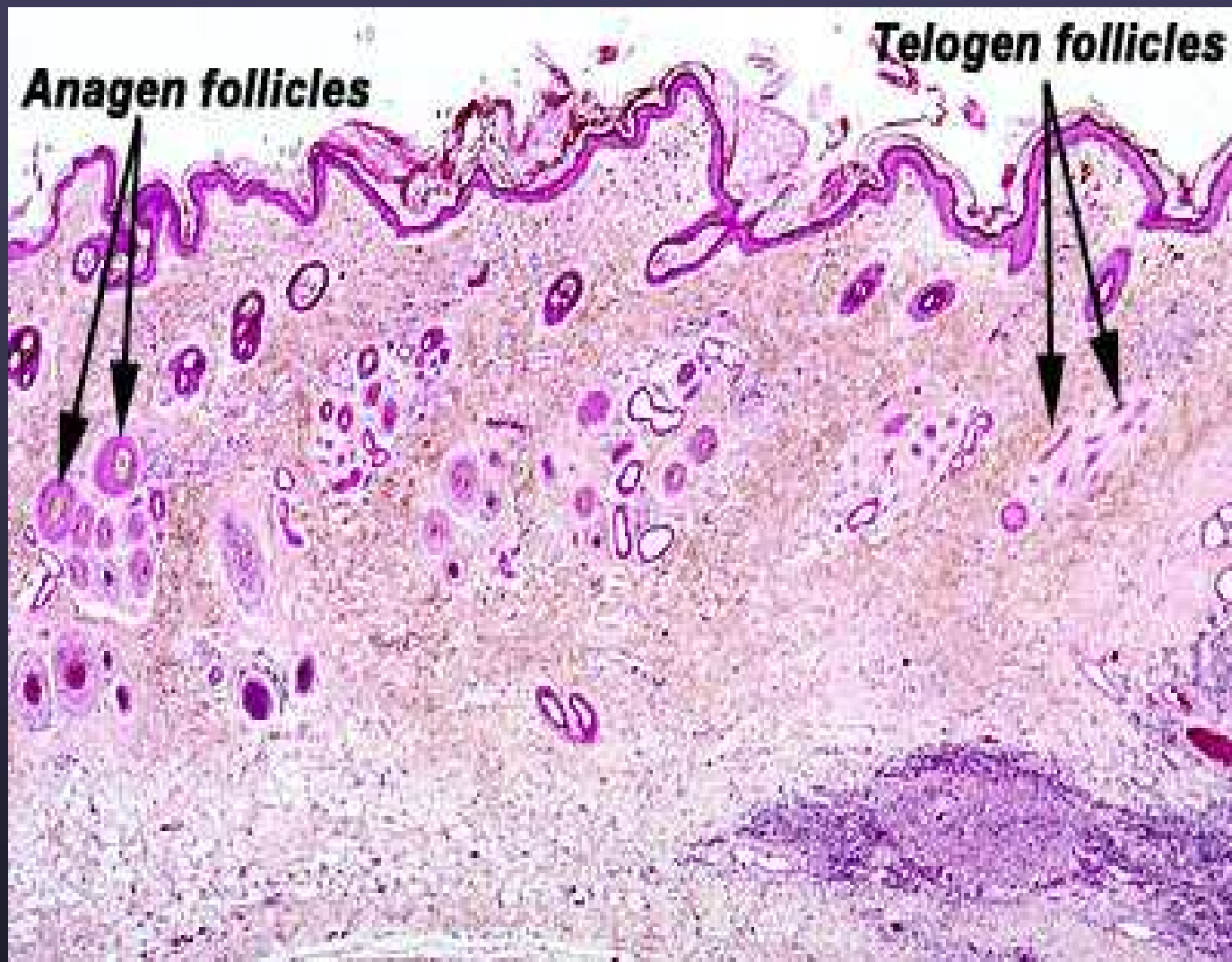


Rabies vaccine-associated localized ischemic dermatopathy

- Generalized/extremities
 - Lesions identical to DM
 - May be post-vaccinal (lacks panniculitis)

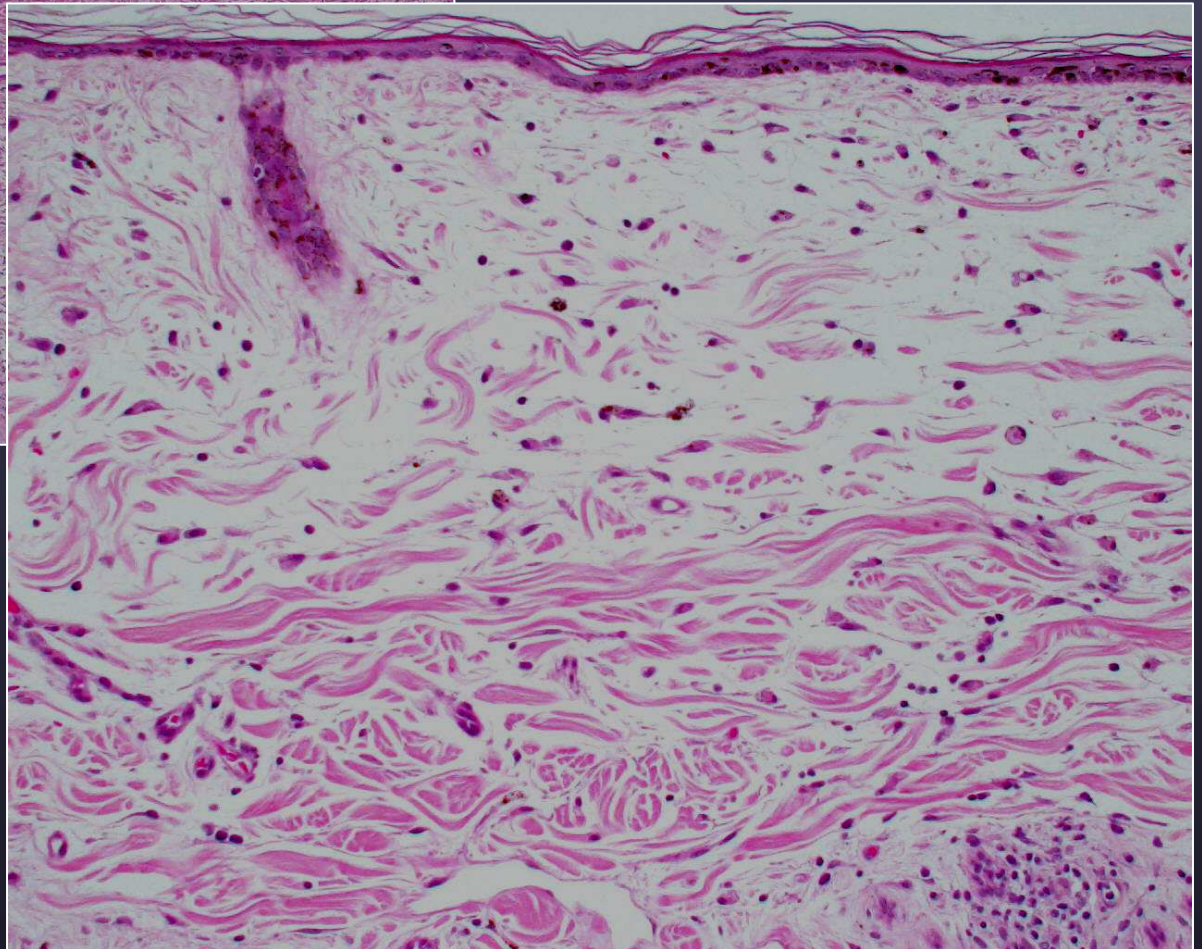
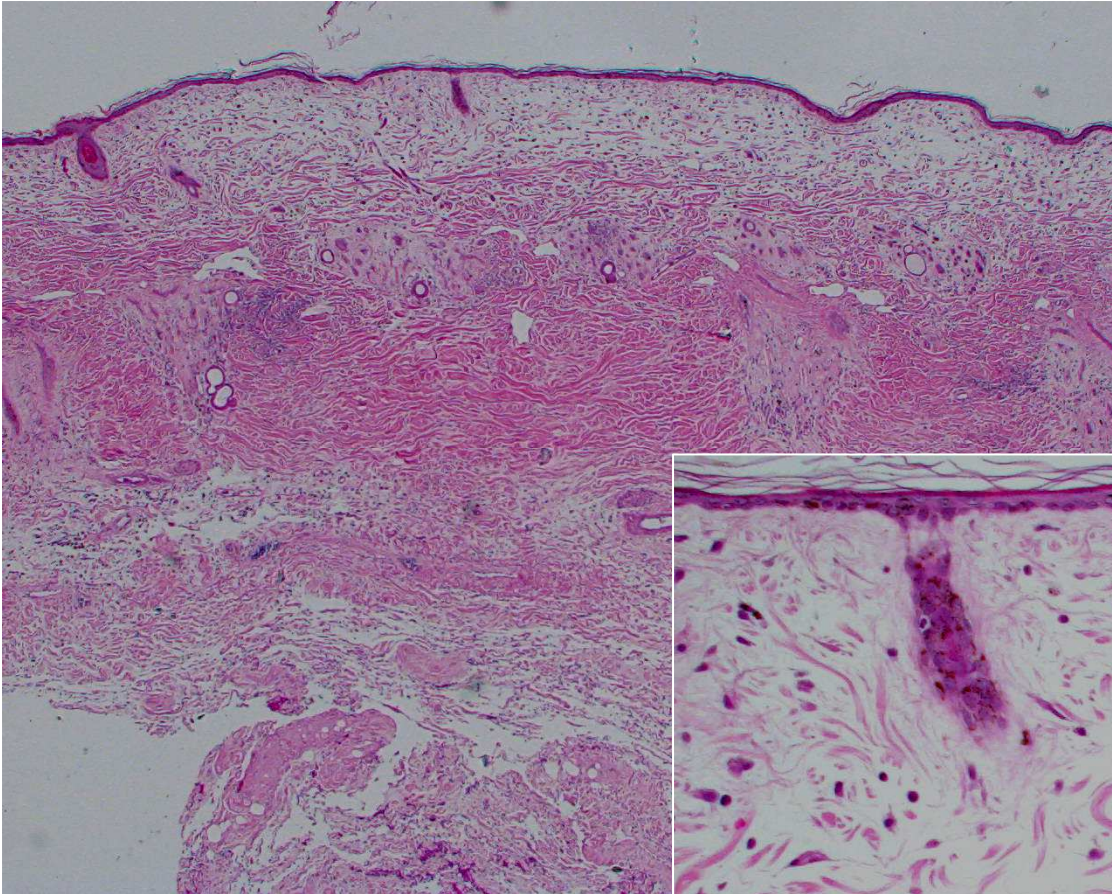


Rabies-vaccine rxn: panniculitis with severe follicular atrophy

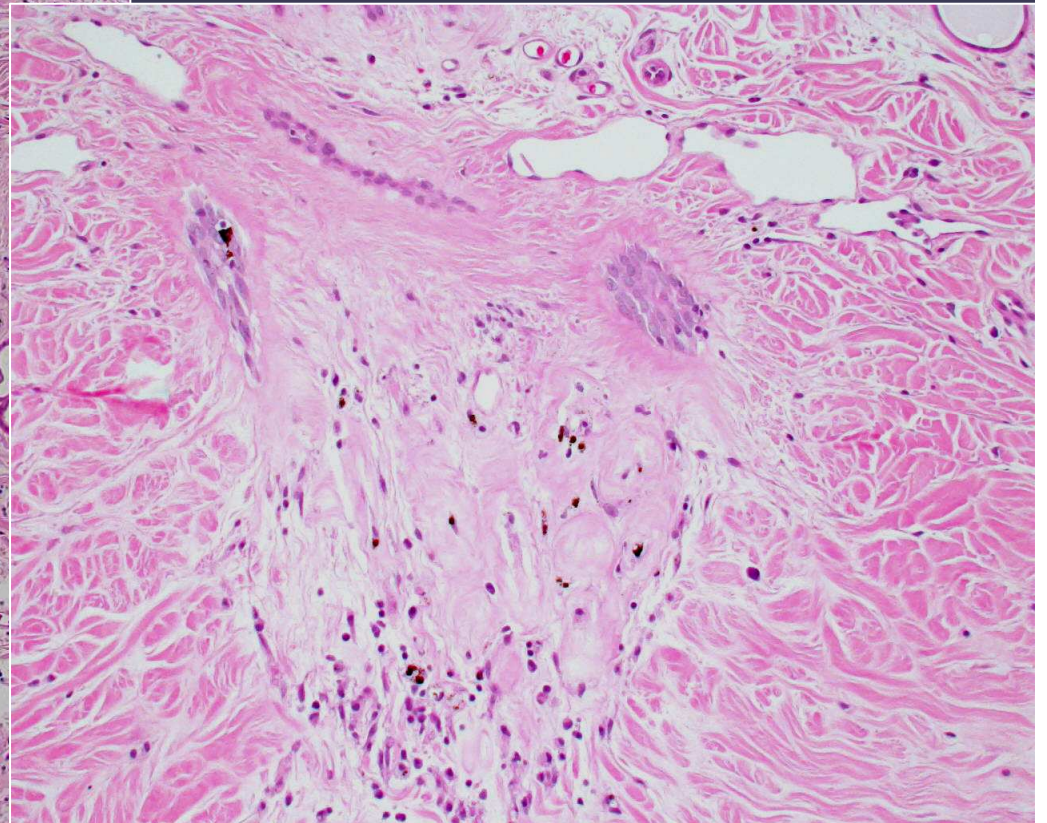
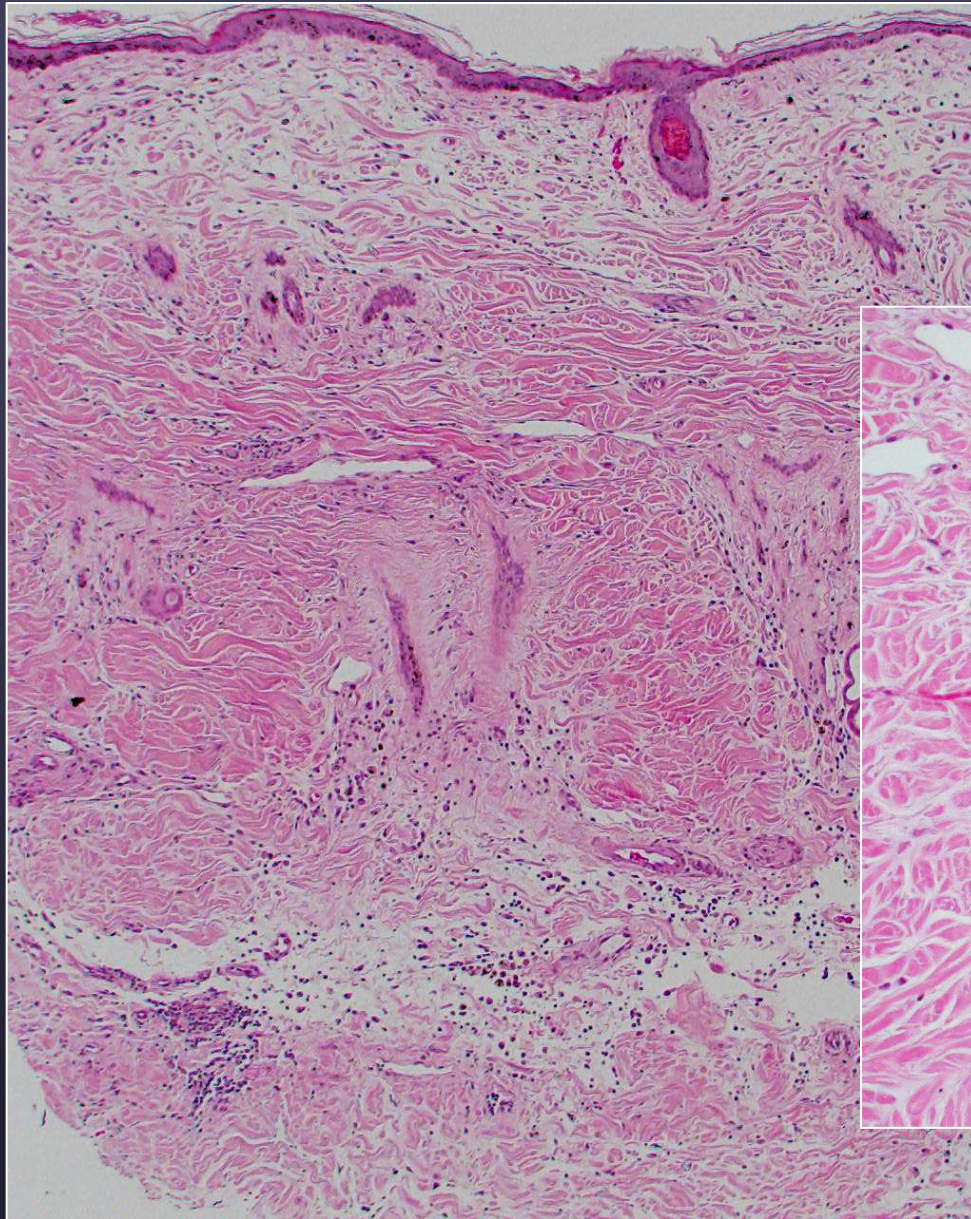


Rabies vaccine reaction

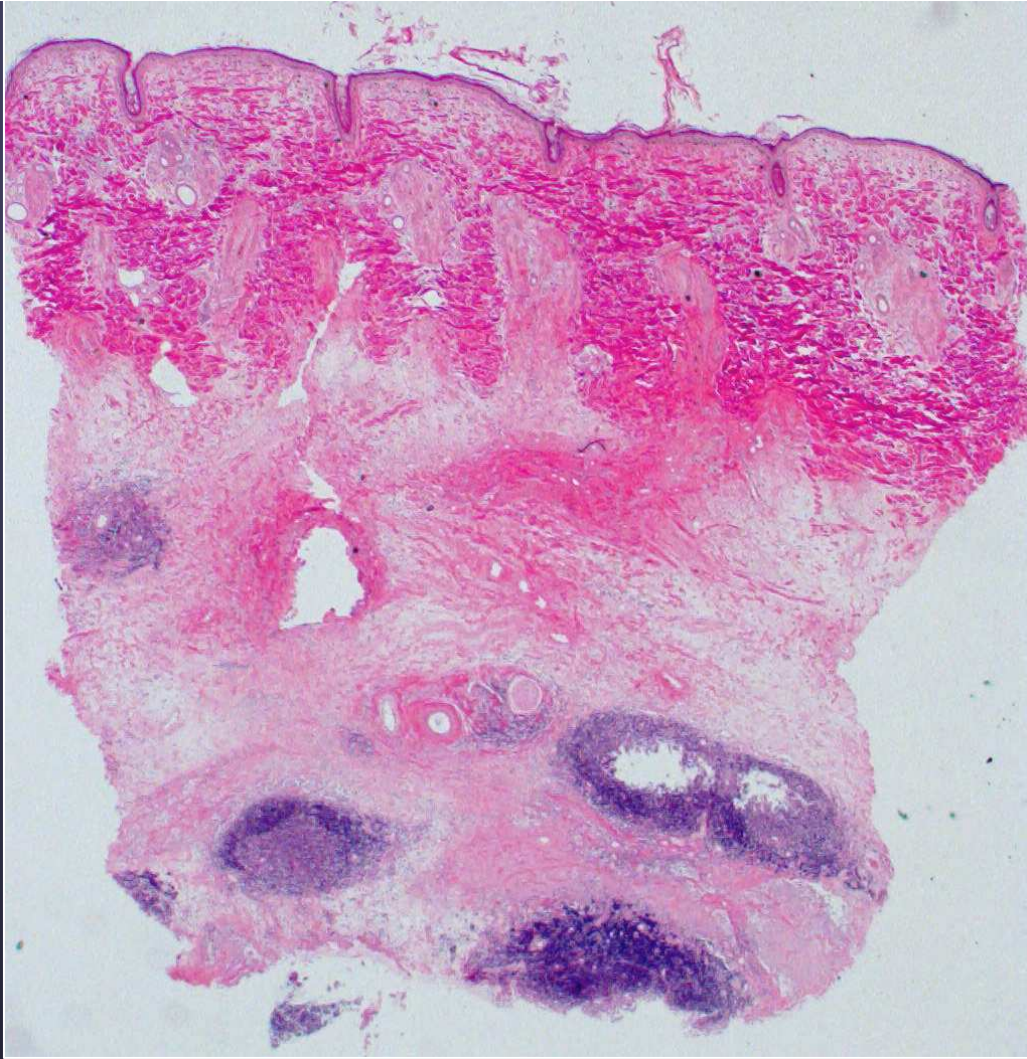
Injection Site Alopecia



Rabies-vaccine associated



Rabies reaction- histopath resembles DM



Injection Site Alopecia

