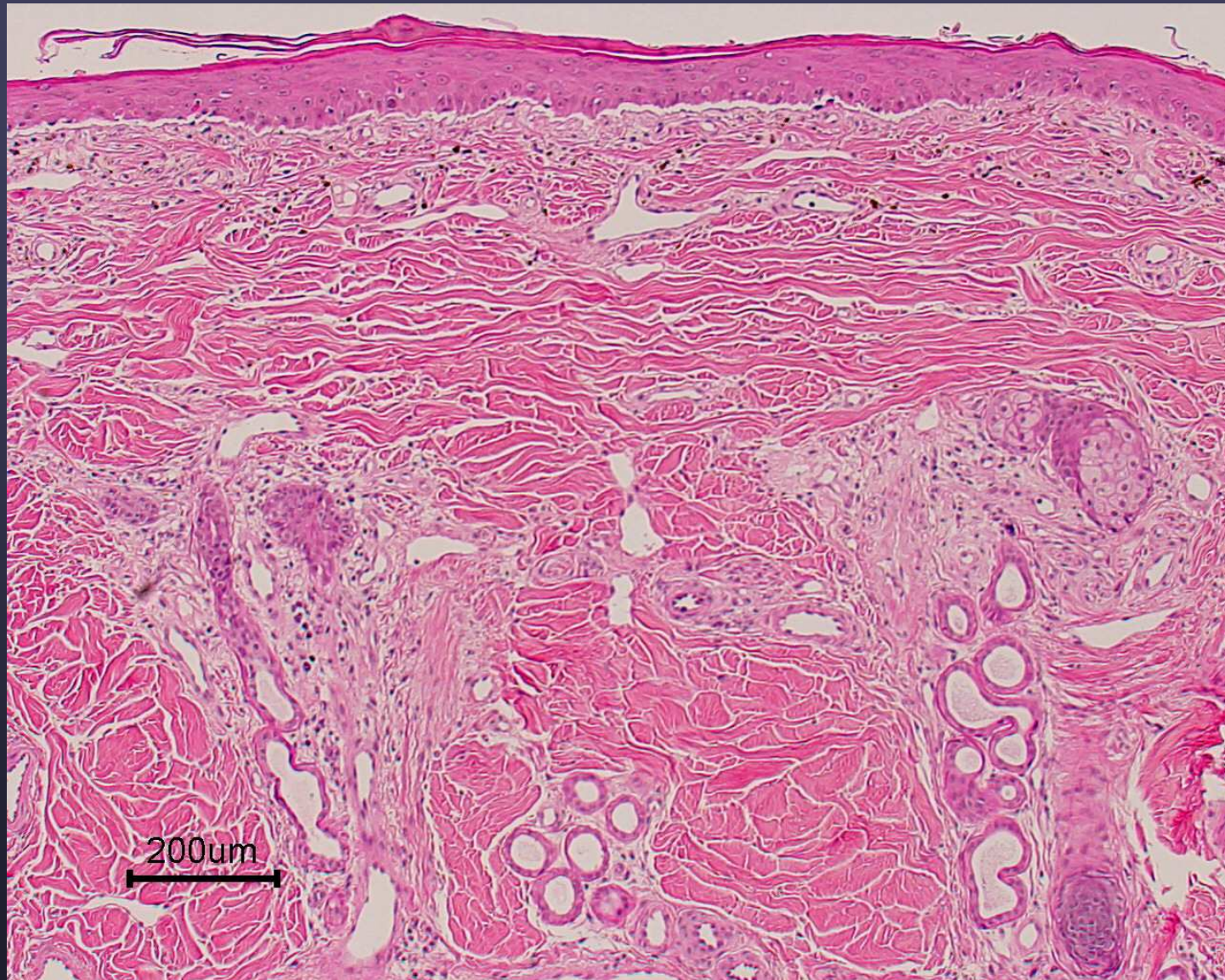




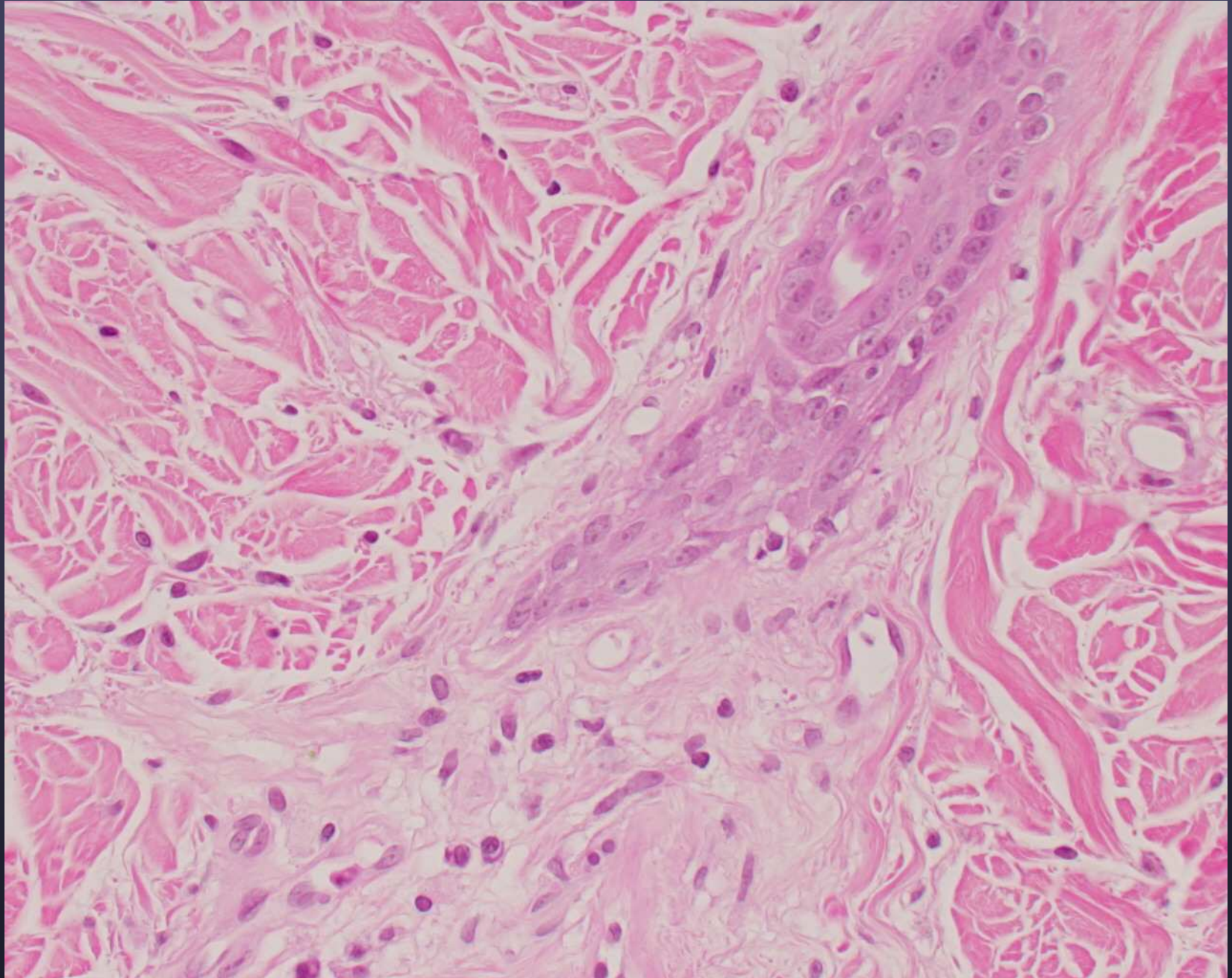
Note the skeletal muscle atrophy





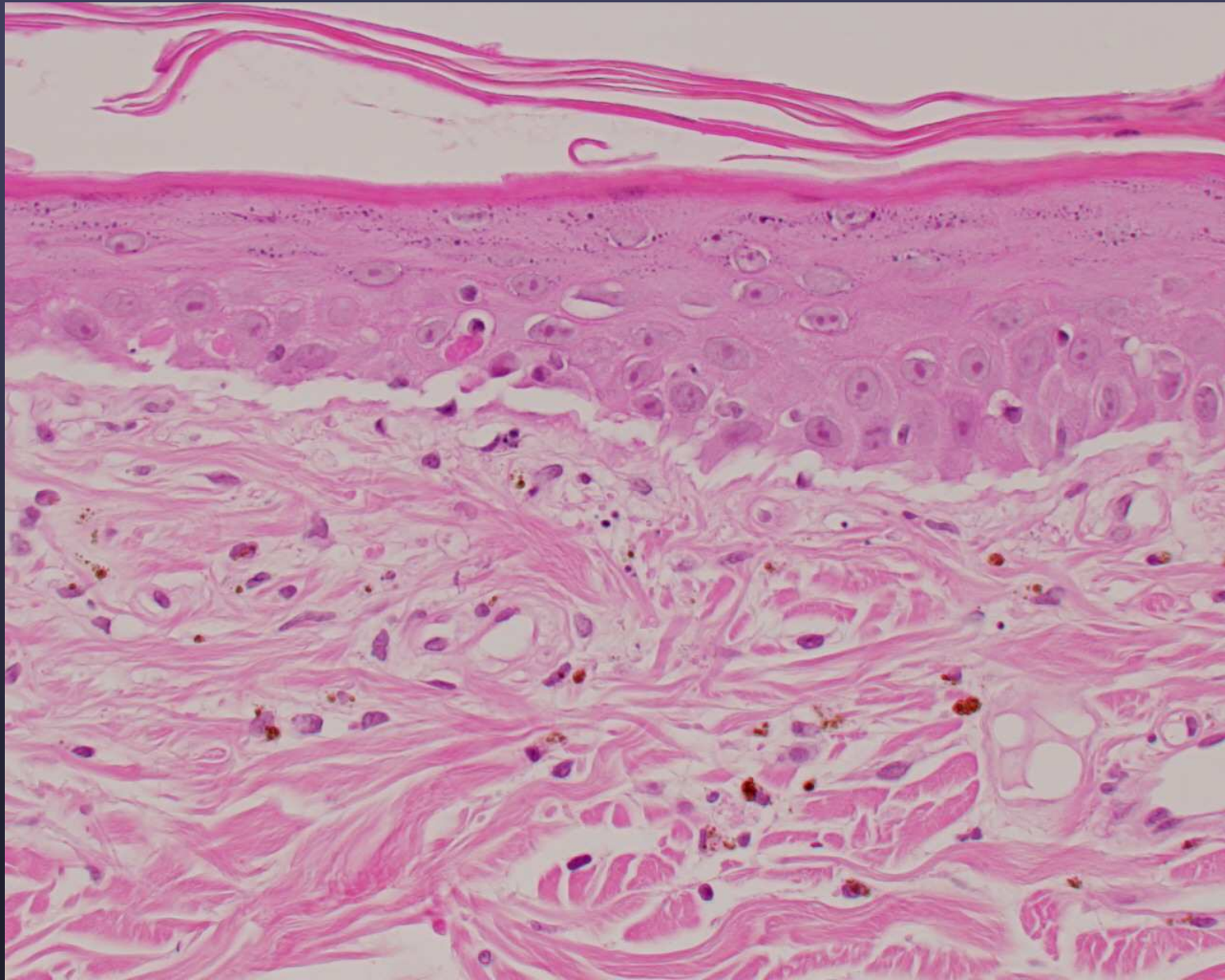
Dermatomyositis (DM)





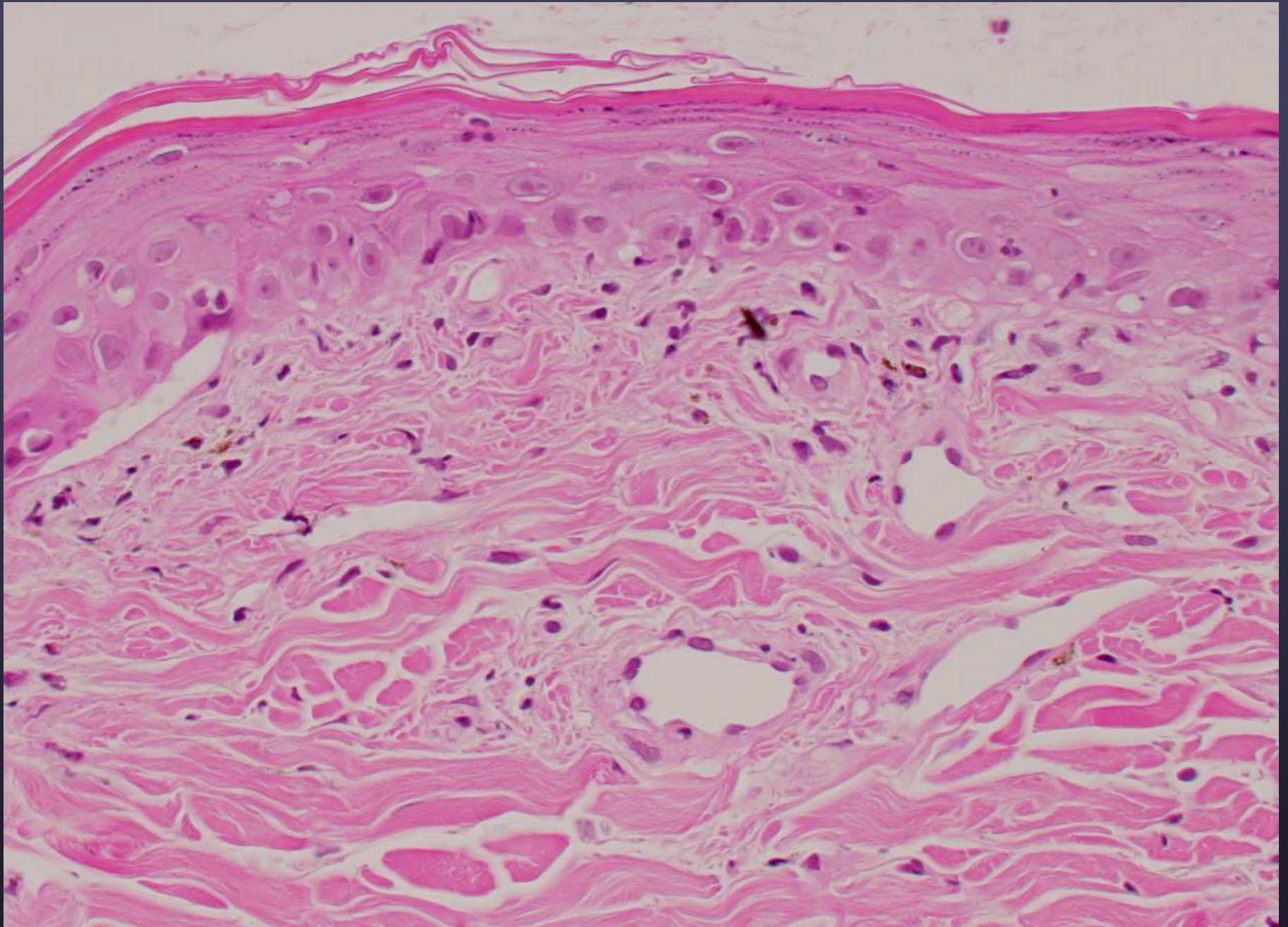
*DM- faded follicle with prominent glassy membrane*





*DM: Cell poor interface with clefting and necrotic basal cells*





DM





*More typical DM in a Sheltie*





*DM- vesicles are exceedingly rare, often periocular and muzzle alopecia/hyper or hypopigmentation and mild scale*