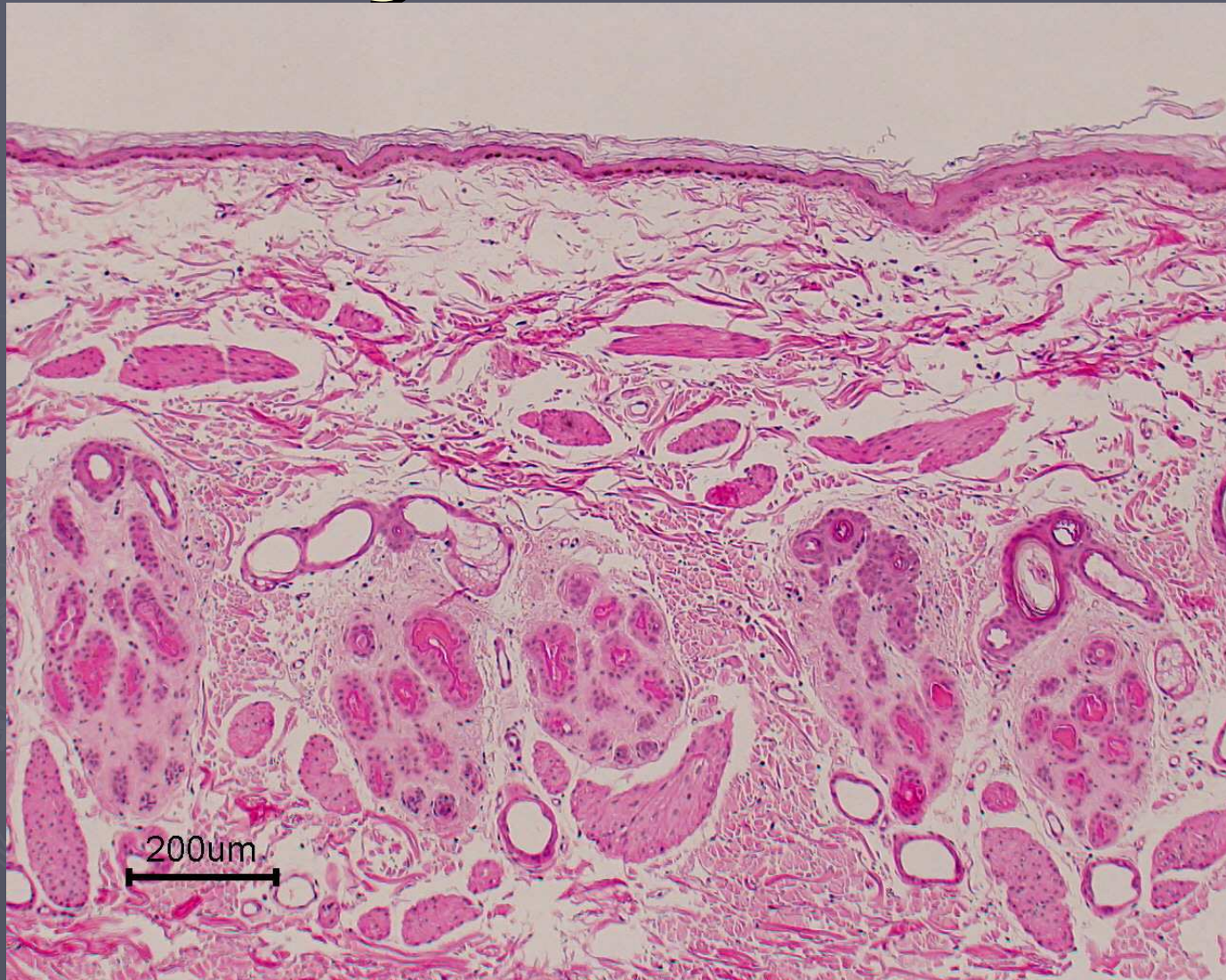
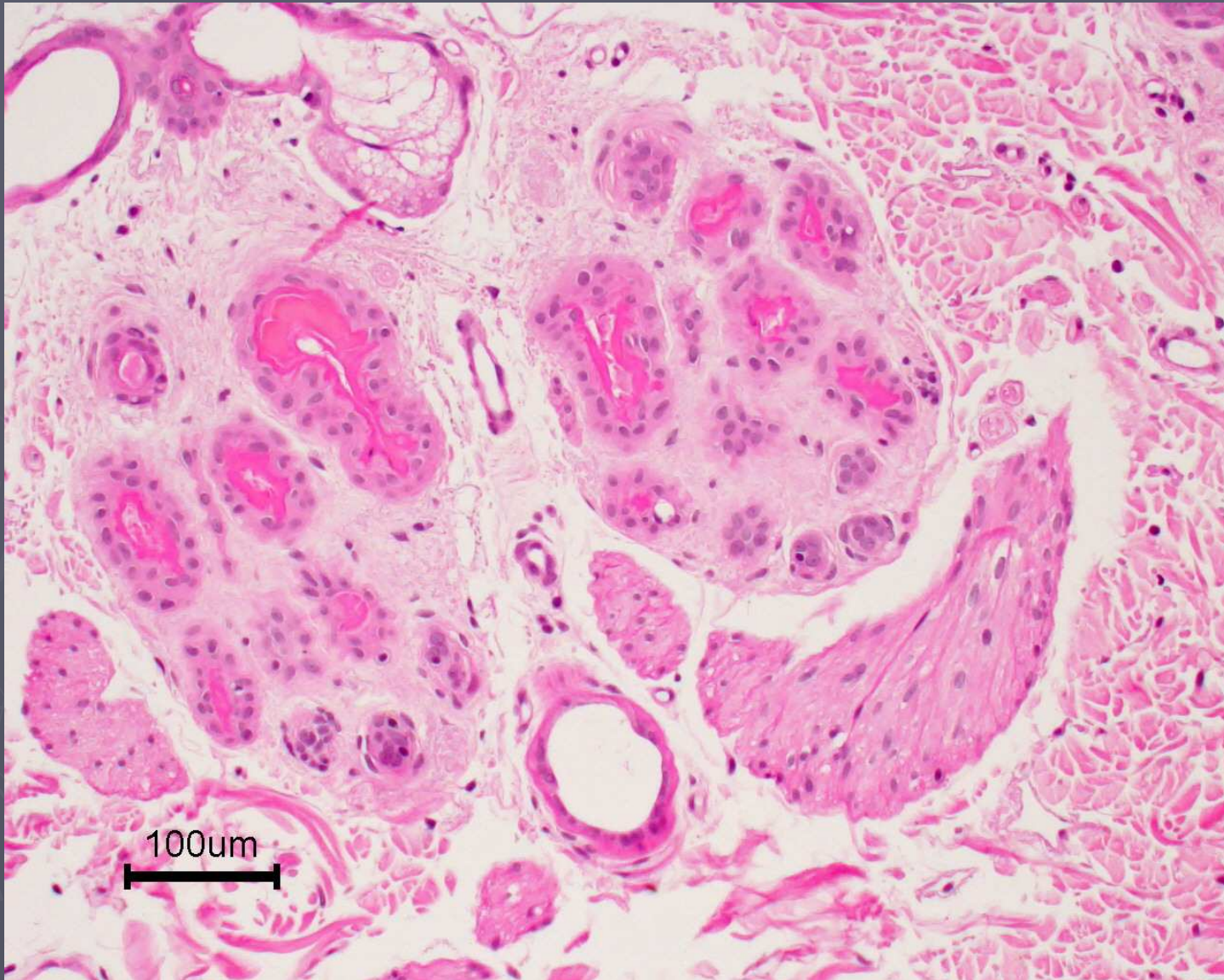


# Telogen Effluvium



Doxorubicin-associated





All follicles in hairless telogen

# Follicular Dysplasia

Dysplasia refers to abnormal growth or development. True follicular dysplasia is a disorder of the anagen phase hair follicle

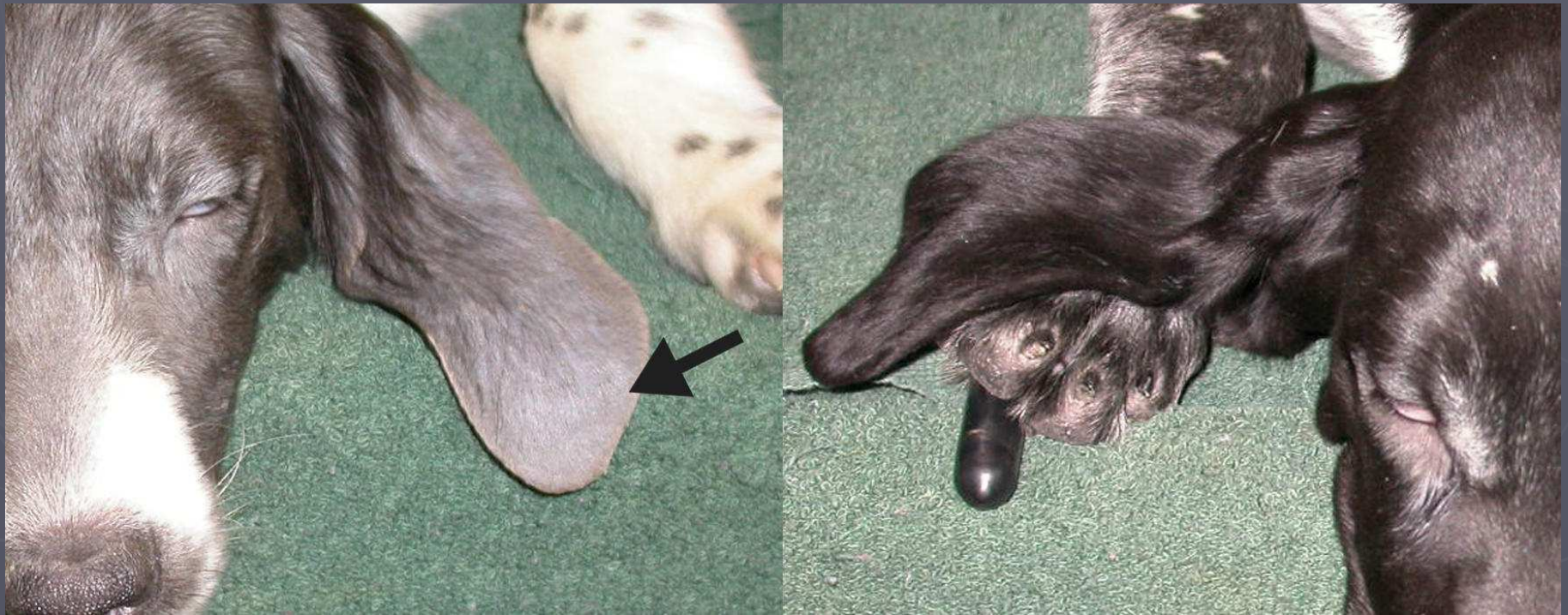
Characterized by an inability to form a normal hair shaft.





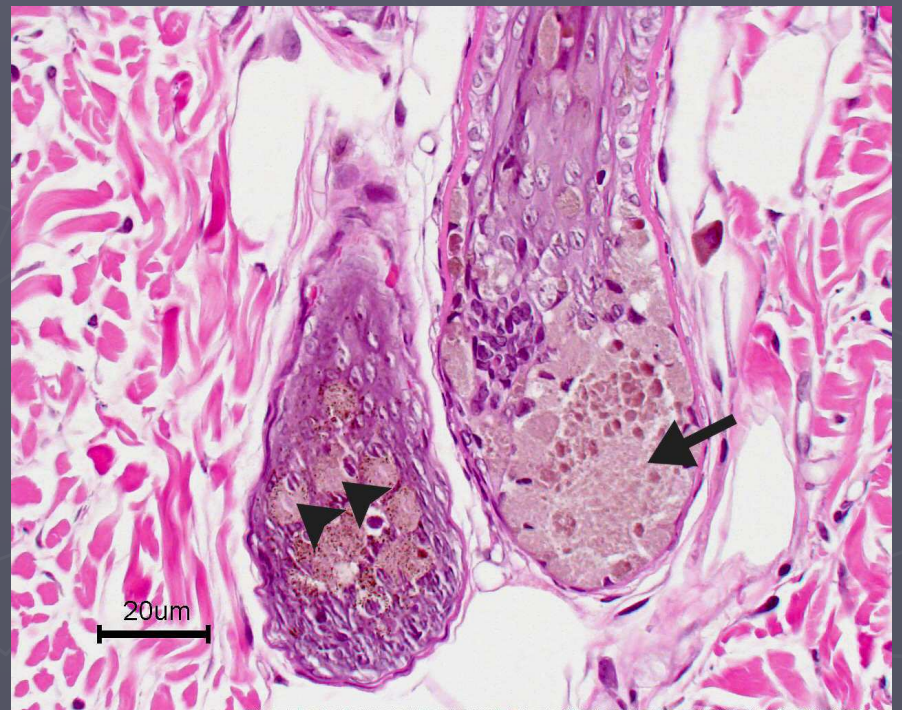
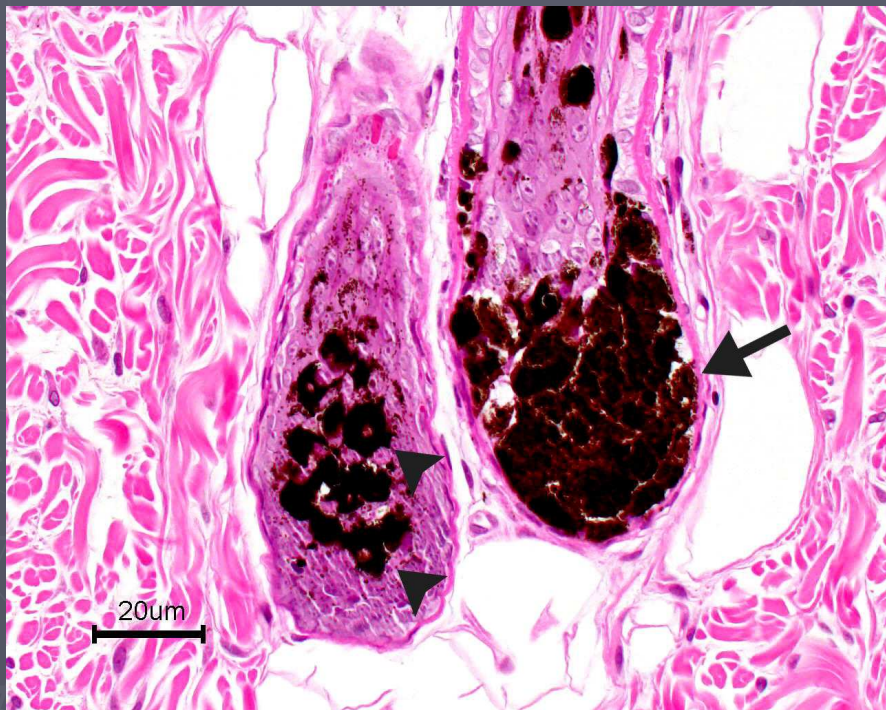
Black Hair Follicular Dysplasia

# Black Hair Follicular Dysplasia



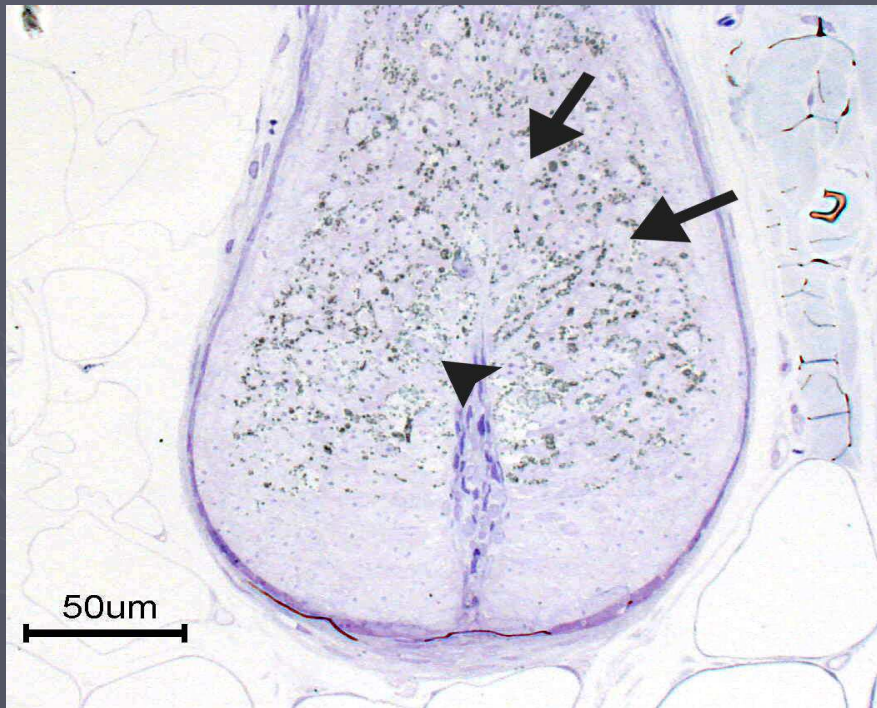


# Black Hair Follicular Dysplasia

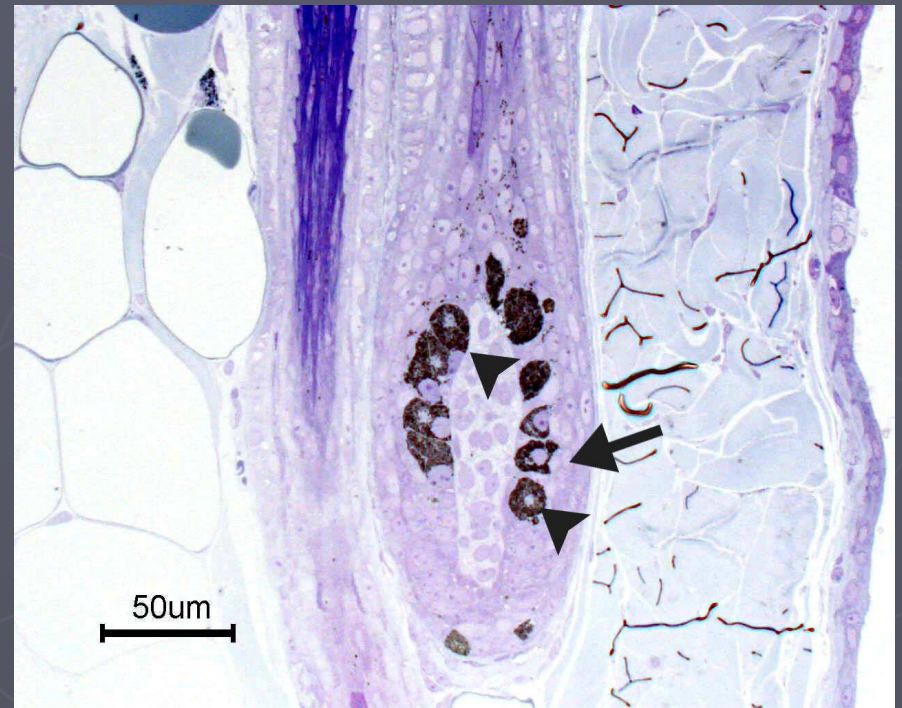


Marked melanin clumping in hair bulb

# Black Hair Follicular Dysplasia

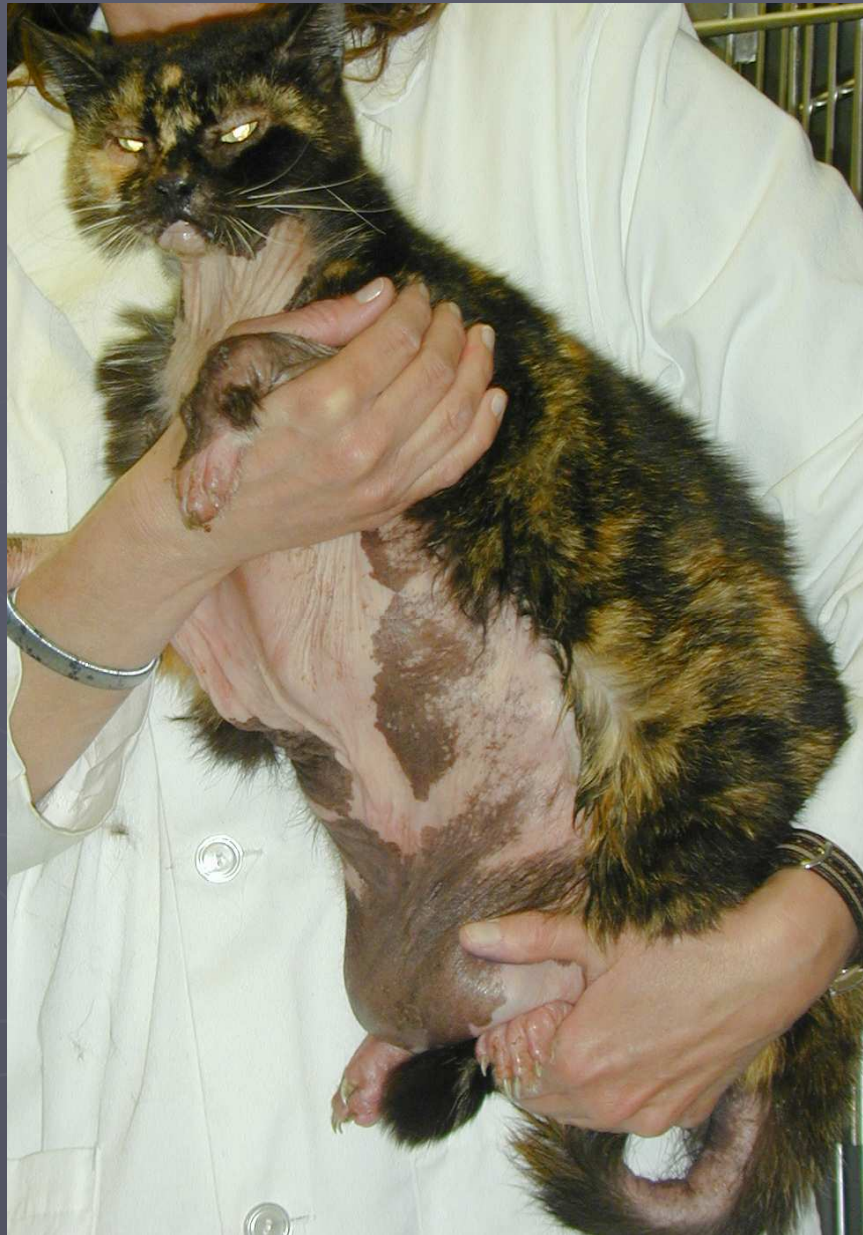


Normal dog  
Note the even melanin distribution  
semithin T-blue stain



Affected dog





Feline pancreatic paraneoplastic alopecia  
*Associated with pancreatic exocrine or bile duct carcinoma*



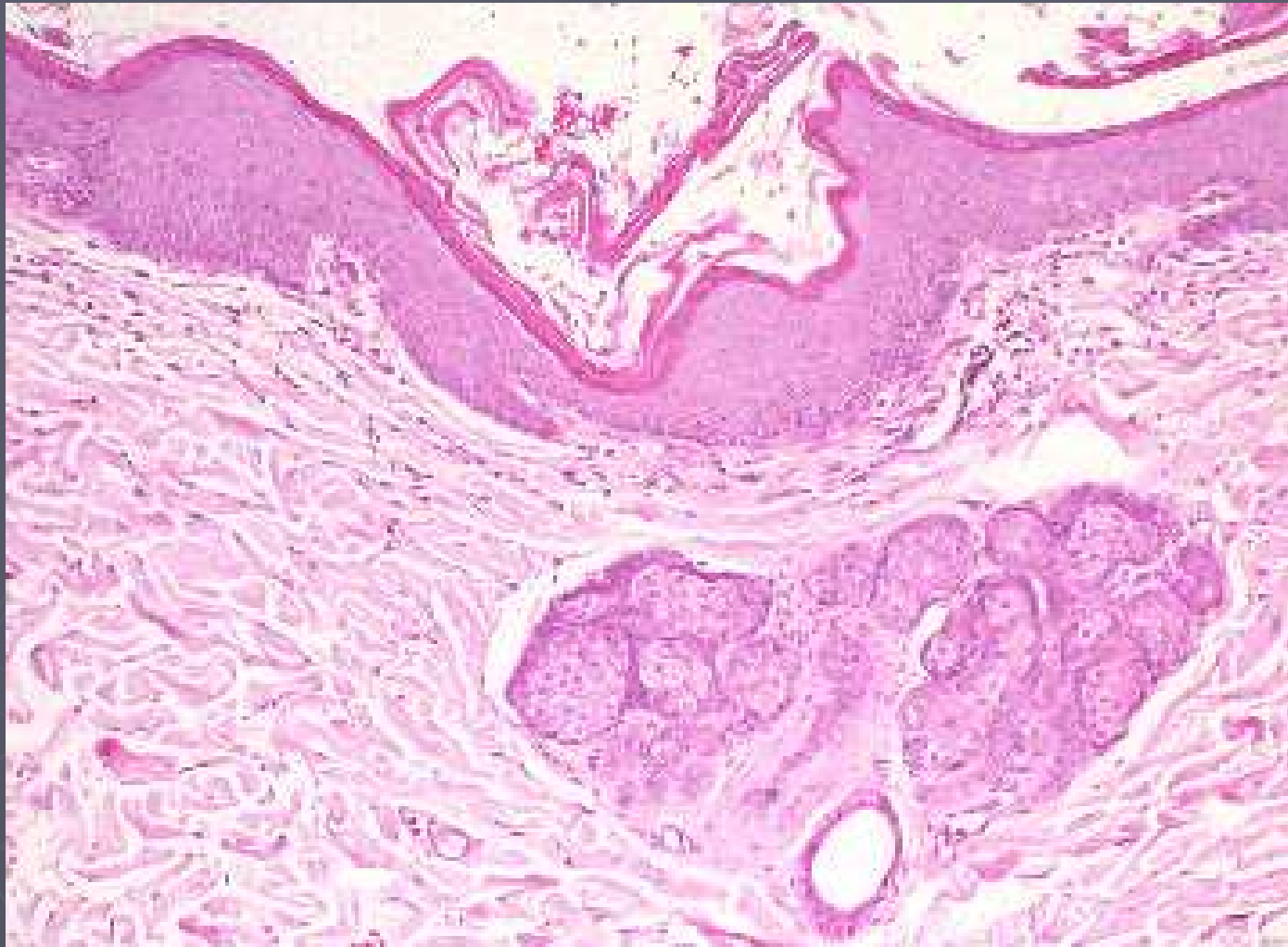
# Feline paraneoplastic pancreatic alopecia



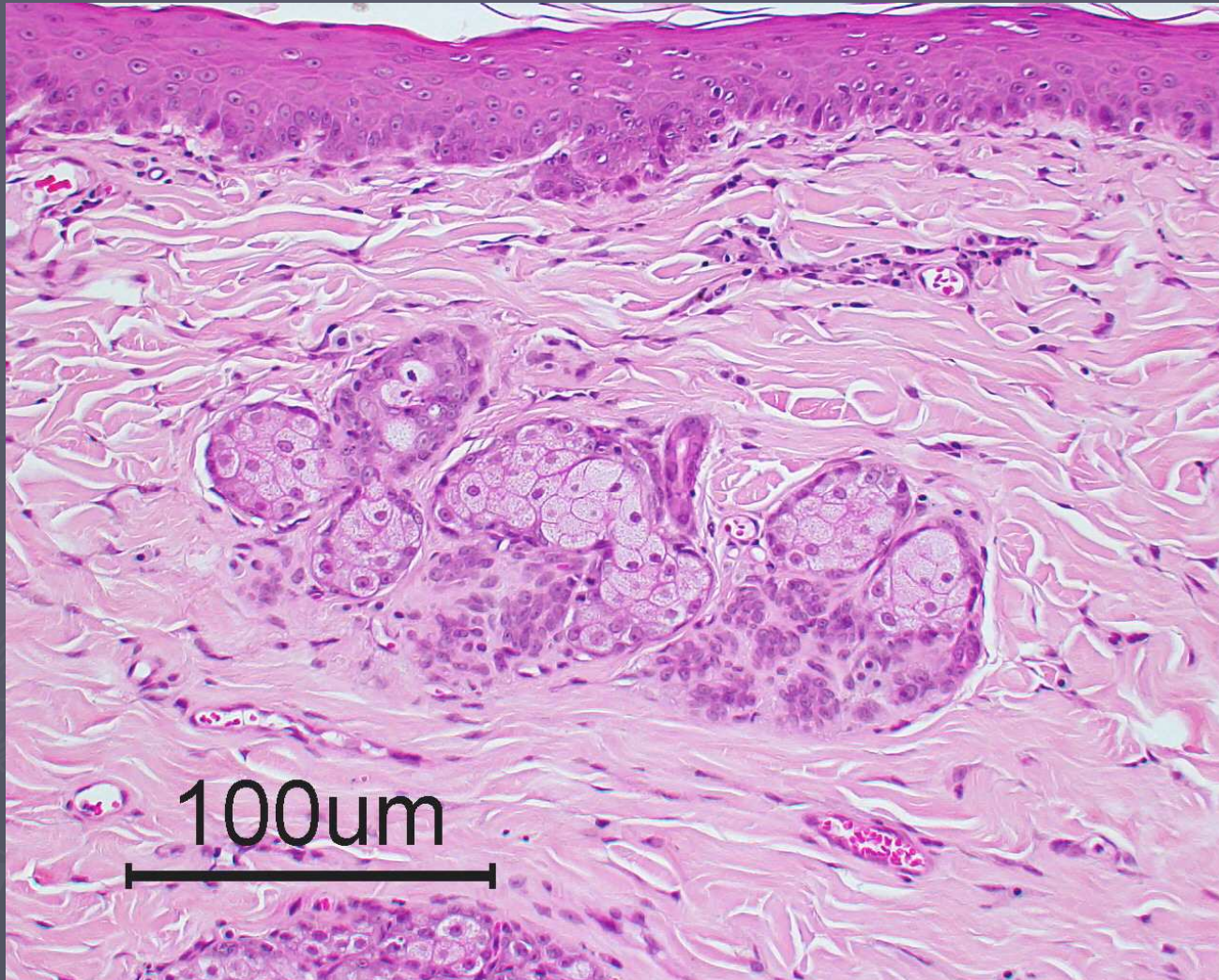
# Feline paraneoplastic pancreatic alopecia







Feline pancreatic paraneoplastic alopecia  
Profound and diffuse follicular atrophy with epidermal hyperplasia



Feline pancreatic paraneoplastic alopecia  
Profound and diffuse follicular atrophy with mild epidermal hyperplasia