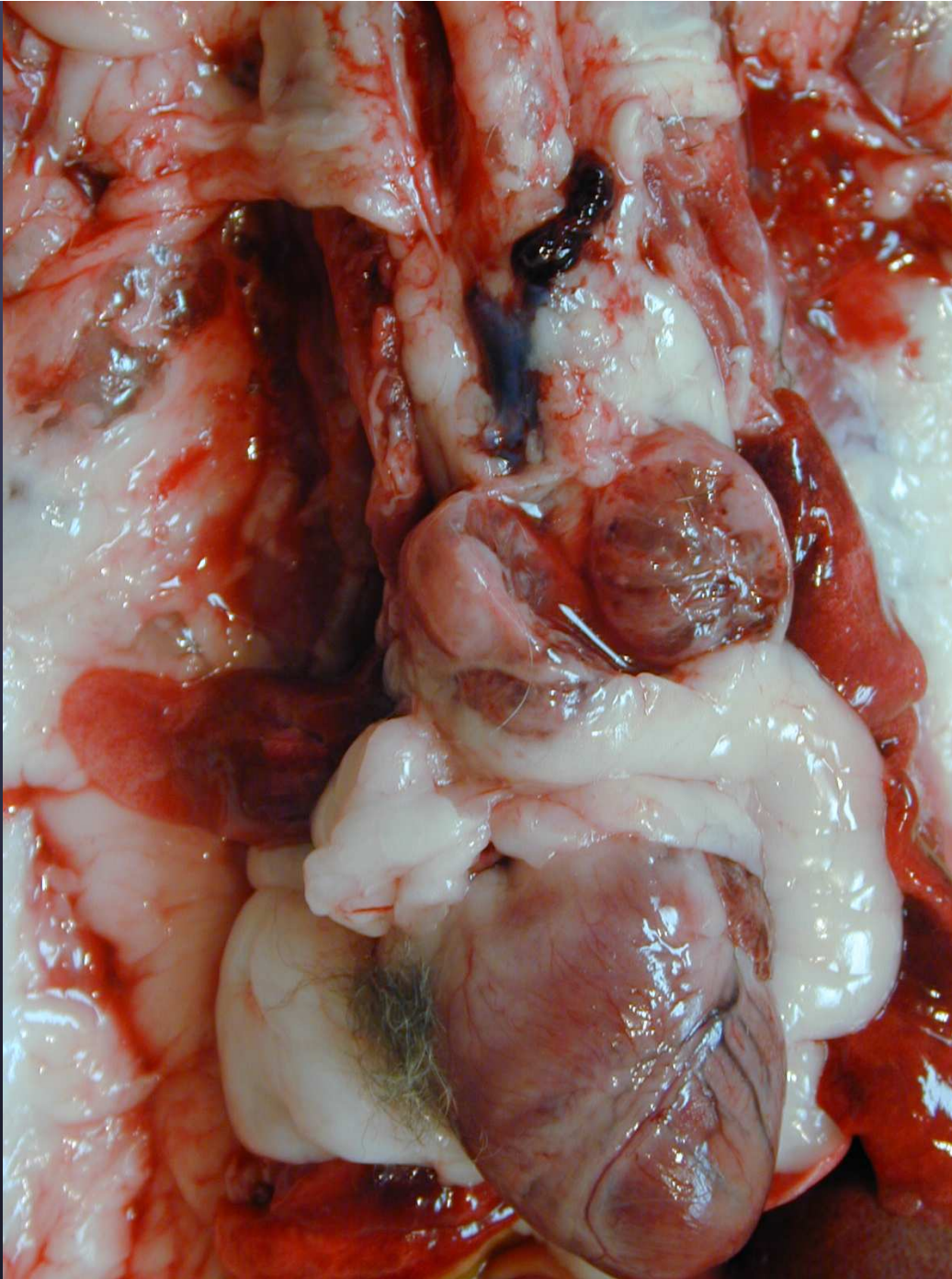


*Severe scaling is difficult to photograph  
in a deceased wet animal--sorry*



*Erosive perianal dermatitis- unusual finding*

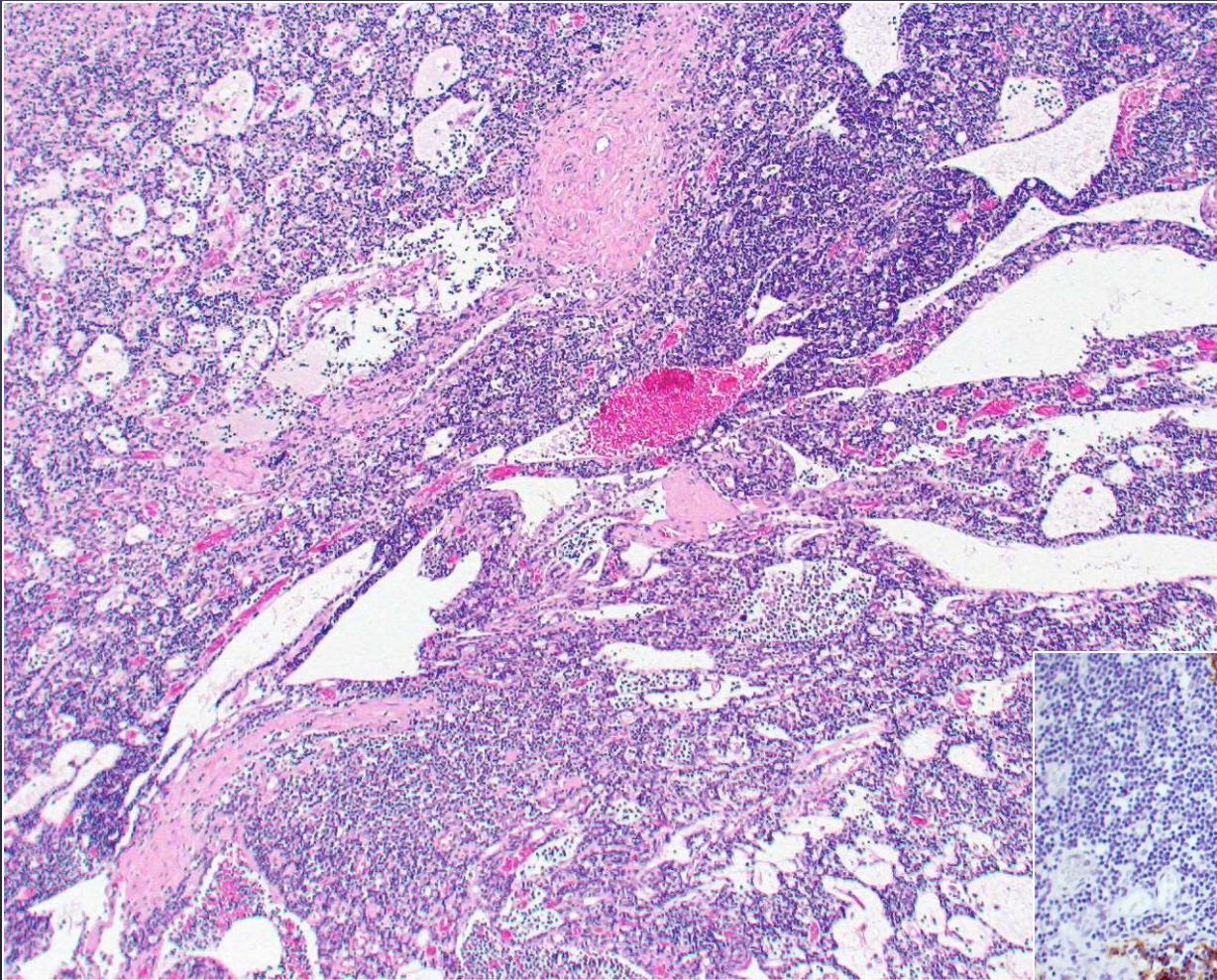




**Thymoma-  
Associated  
Dermatosis**

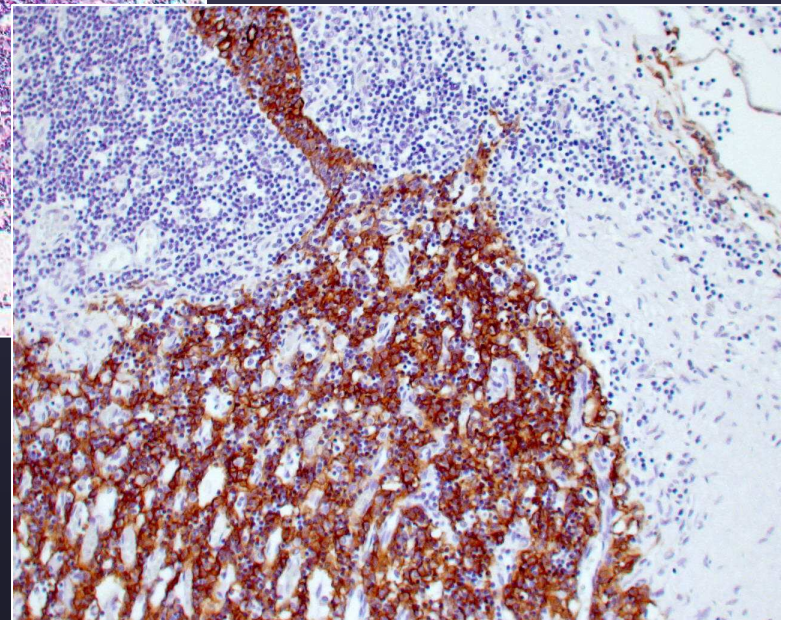


# Thymoma-associated Dermatosis



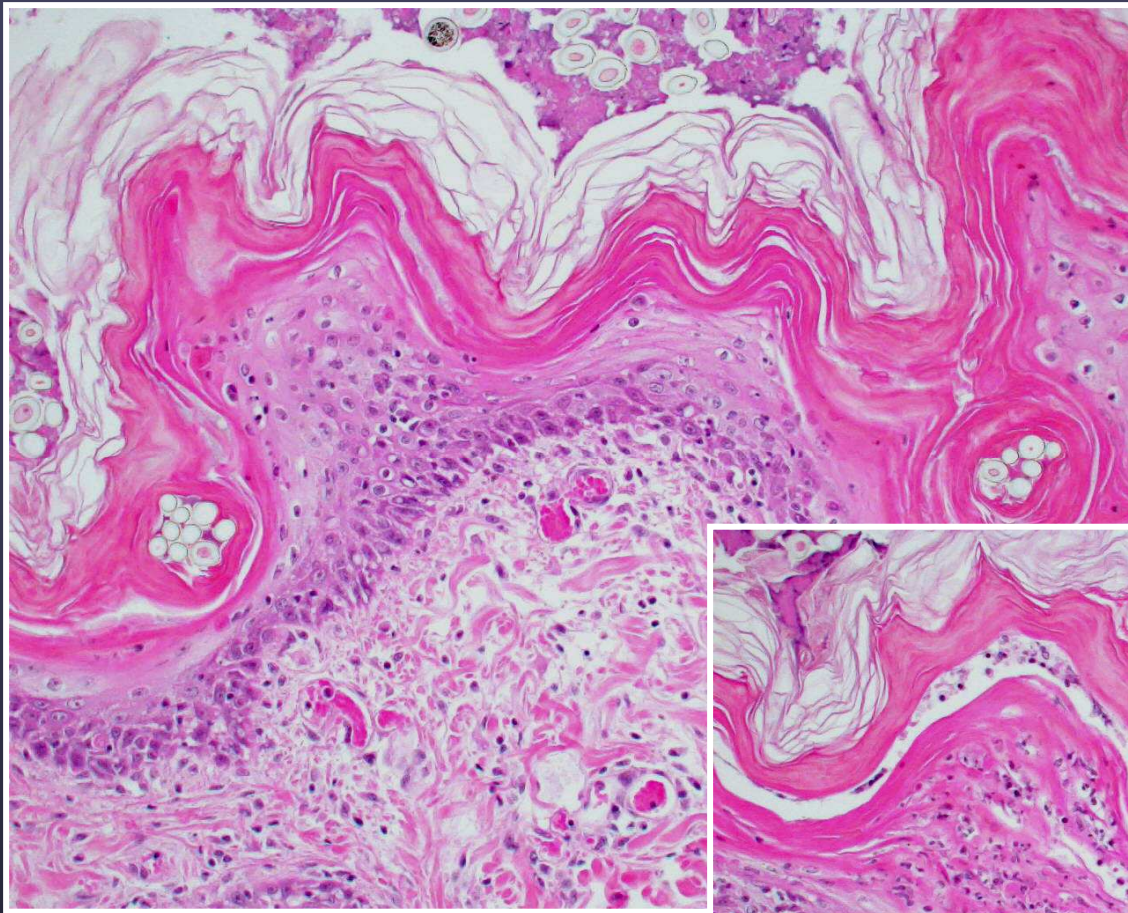
Thymic mass

**AE1/AE3**

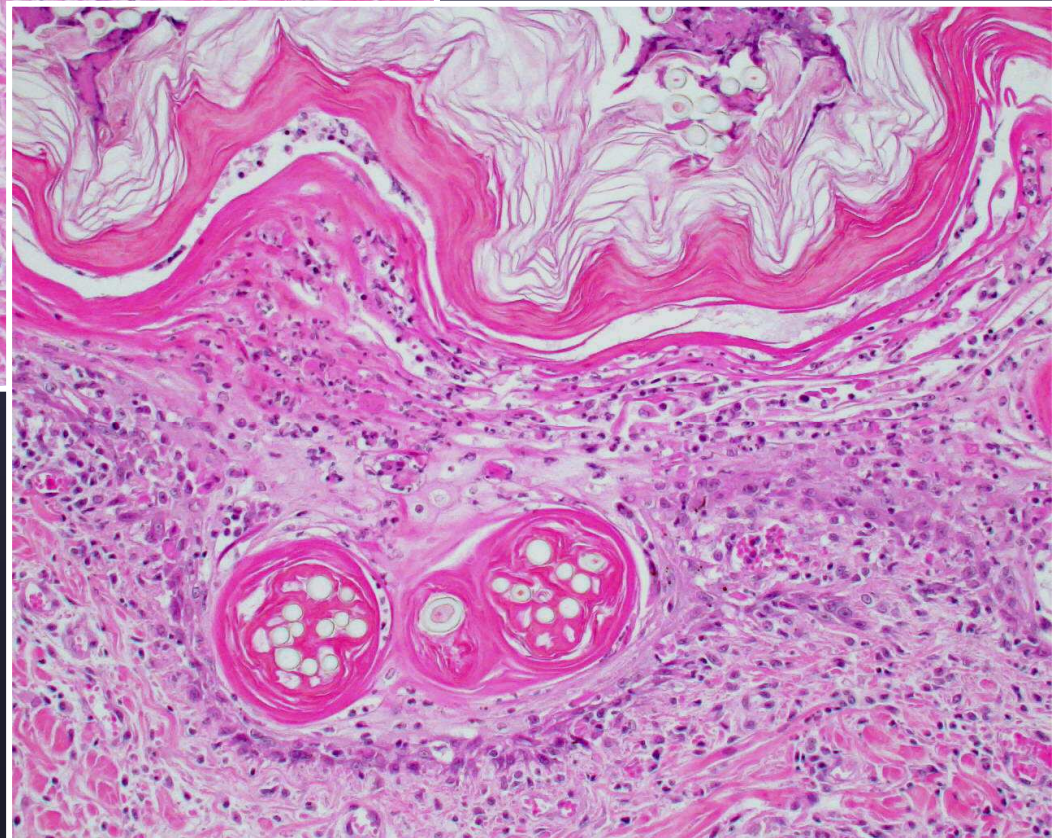




# Thymoma-associated Dermatosis



*Note that the histo resembles EM*



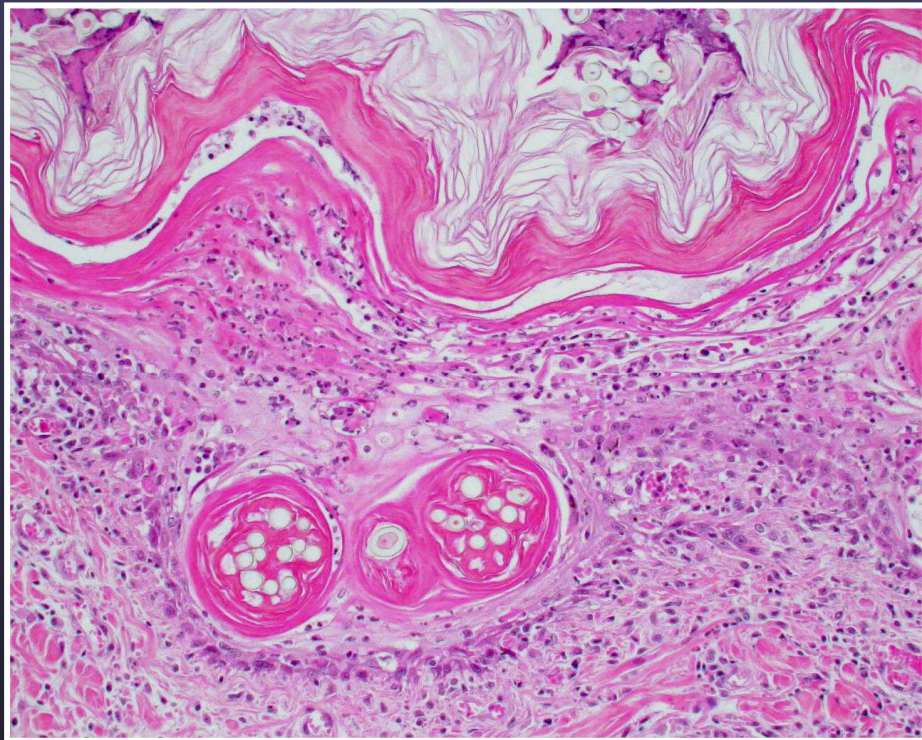
# Thymoma-associated dermatosis

- Middle-aged to older cats
- Begins with scaling→ thick adherent scale that epilates with entrapped hair→ erosions
- Lethargy and anorexia
- Dyspnea uncommon

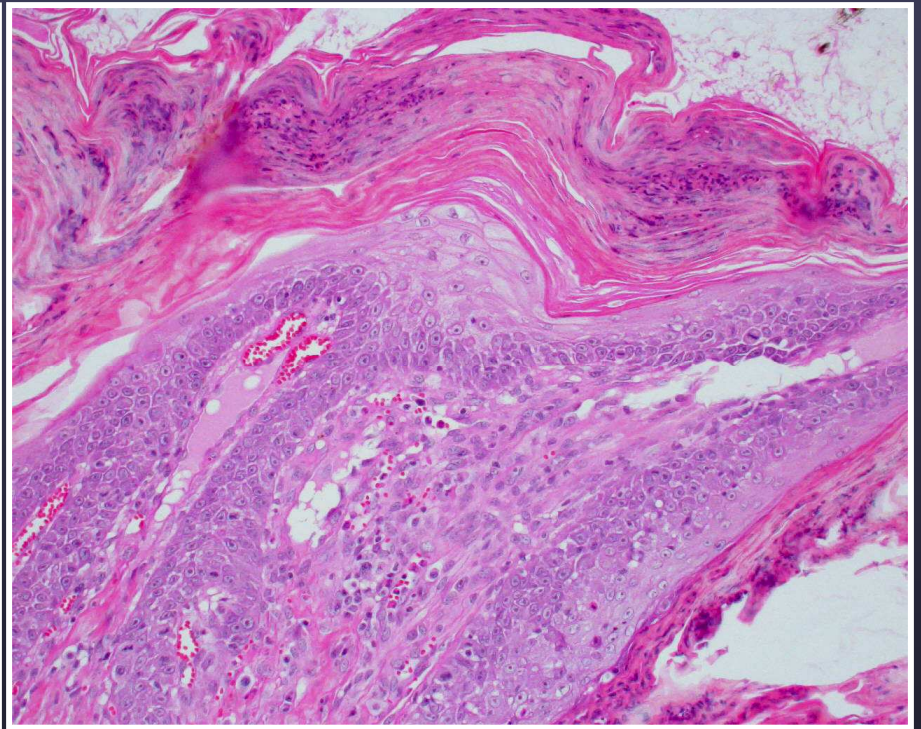
# TAD

- Scattered apoptotic KCs (basal layer and spinous)
- Diffuse and severe hyperkeratosis (parakeratotic and orthokeratotic)
- Interface change can involve ORS leading to sebaceous gland loss
- Malassezia in corneal layer





Thymoma-associated dermatosis



Erythema multiforme

# Histopathology

Erythema multiforme-like disease

Thymoma *(can be very small and missed on radiographs)*

Drugs

Herpesvirus

Systemic disease process

→ Look for Mixed patterns in cats!

*(→ Mixed patterns associated with neoplasia or systemic illness)*





*Another case of thymoma associated dermatosis (TAD)*

Dr. Aiden Foster