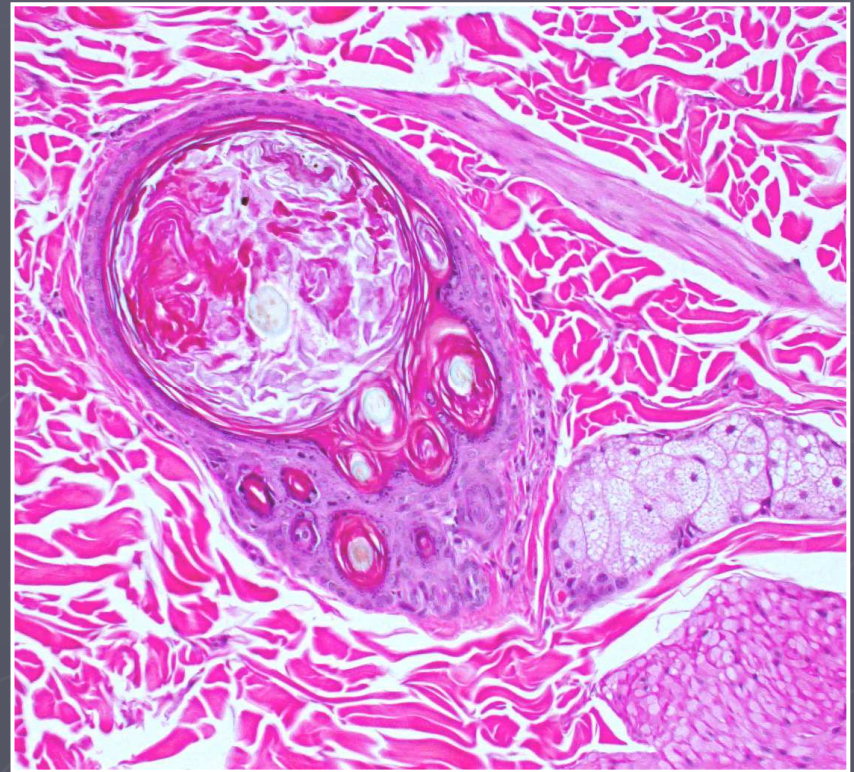
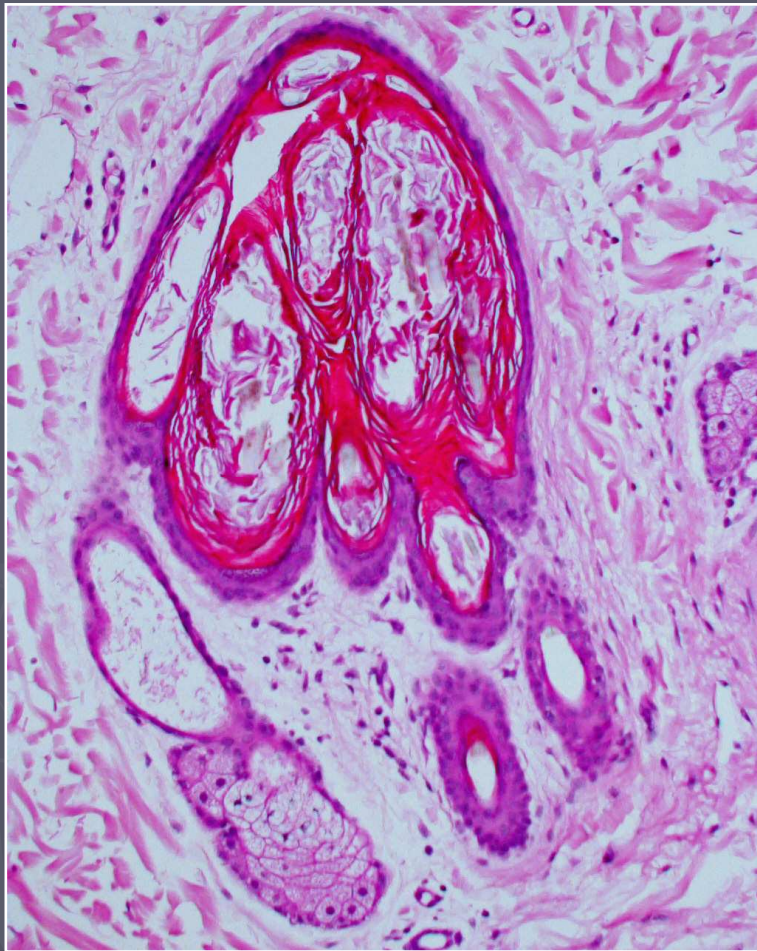


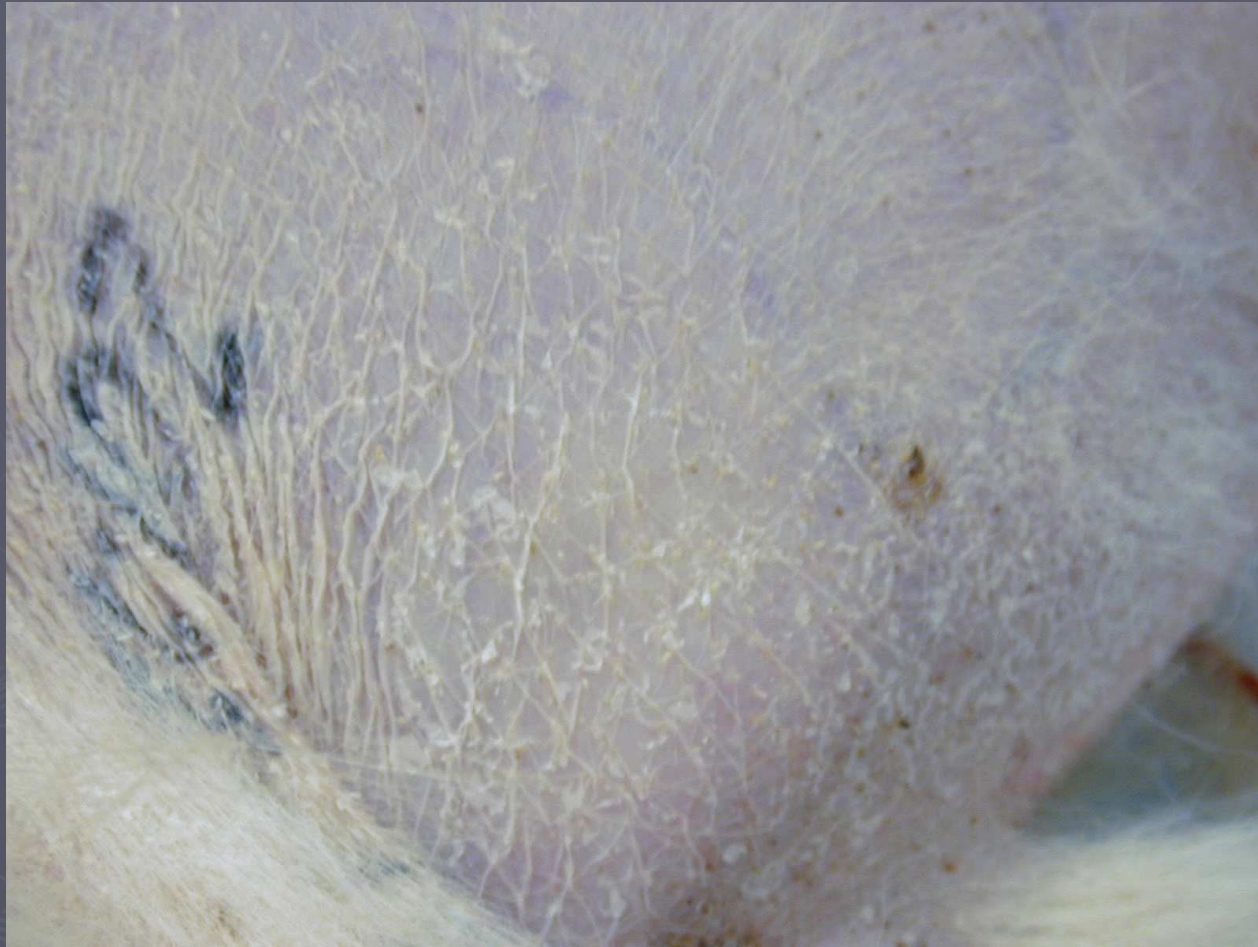


# Chesapeake Bay Retriever Alopecia



Adult onset hair loss in Chesapeake Bay retrievers.  
a clinical and histological and study. *Veterinary Dermatology* 2005; 16:39-46

Cutaneous atrophy  
and striae



Hyperadrenocorticism

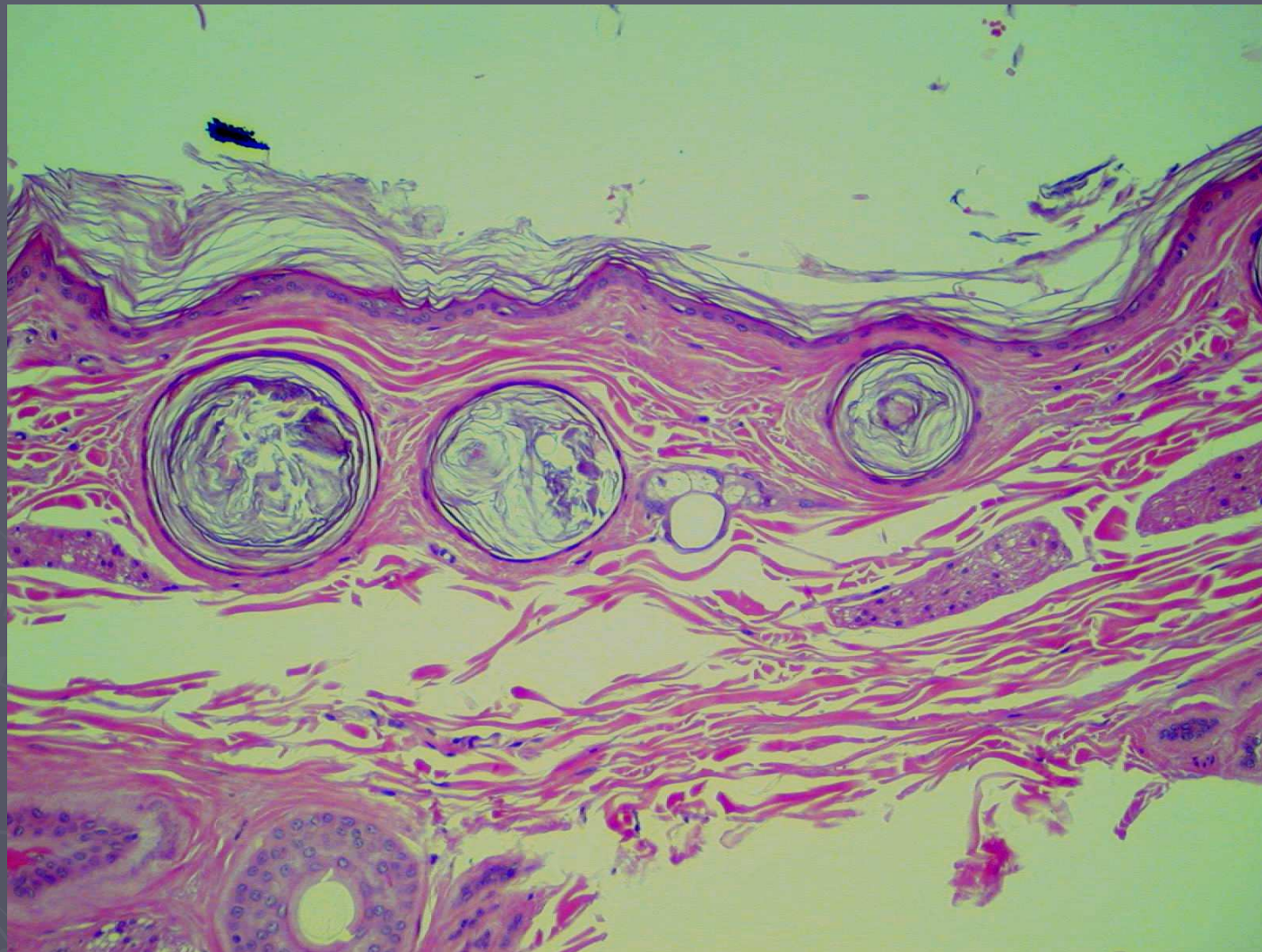


Topical corticosteroid atrophy





Calcinosis cutis



### Hyperadrenocorticism

Epidermal and outer root sheath thinning (1-nucleated layer) with follicular keratosis and atrophy; mild dermal thinning (note comparison with size of arrector pili m.)

# Alopecia X--- Controversial?

## ► What is included??

- My list: pseudocushings/growth hormone responsive dermatosis/adrenocortical hyperplasia syndrome, Siberian husky follicular dysplasia, post clipping alopecia
- Not included: cyclic flank alopecia, pattern baldness





Post clipping alopecia





Post-clipping alopecia