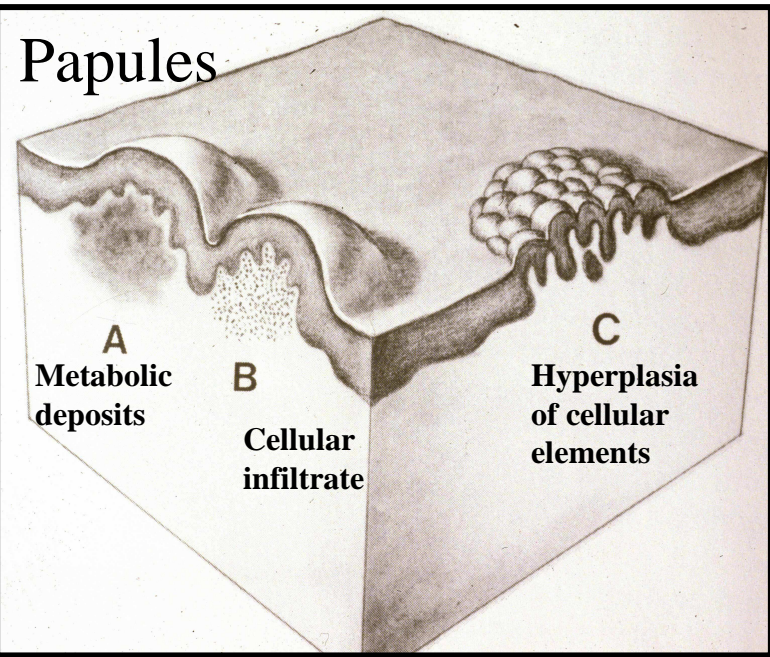


# Papule and plaque

- A papule is a small, solid elevation of the skin up to 1cm in diameter
- A plaque is a larger, flat-topped elevation formed by extension of infiltrated tissue, or coalition of papules

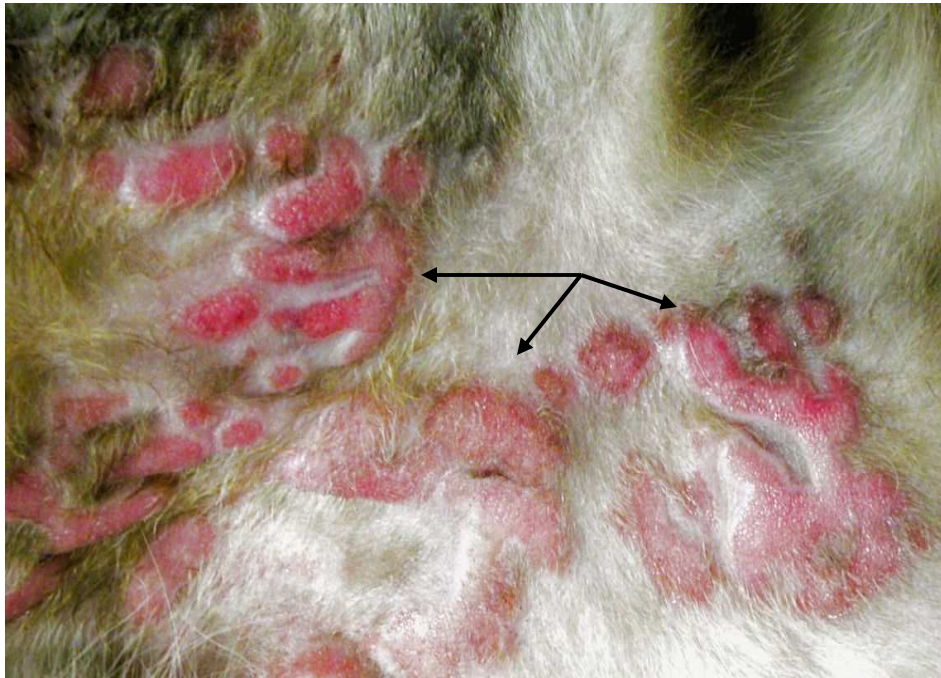


Eosinophilic papules on the hard palate of a cat, due to allergic stomatitis



Papular eruption on abdomen of a cat with *Demodex gato*

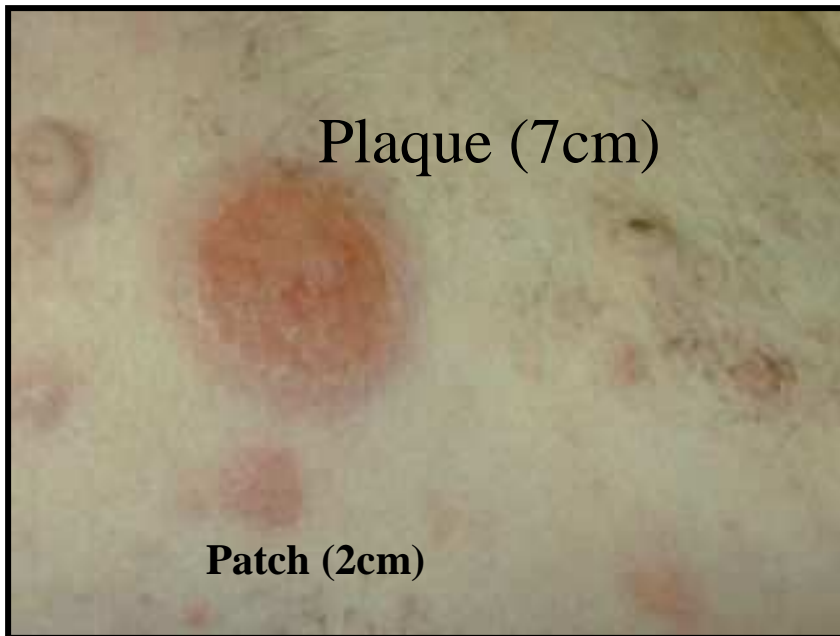




Eosinophilic plaques on the abdomen of a cat with food allergy (ranging from 2cm to 6cm in diameter/length)



Annular (“doughnut shaped”) plaque due to cutaneous histiocytosis



Large plaque and small patch lesions due to cutaneous T-cell lymphoma in a dog