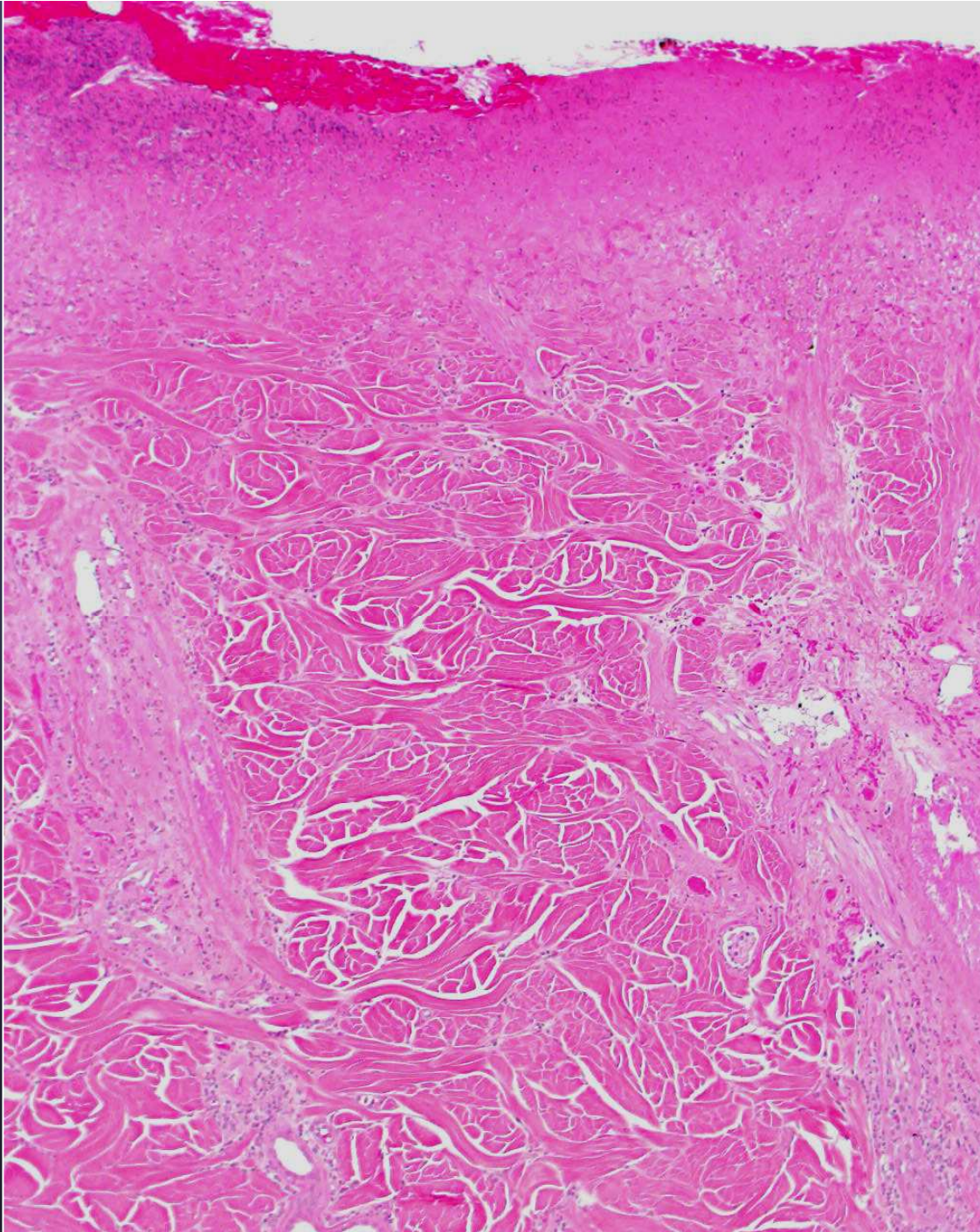


Thermal Burn

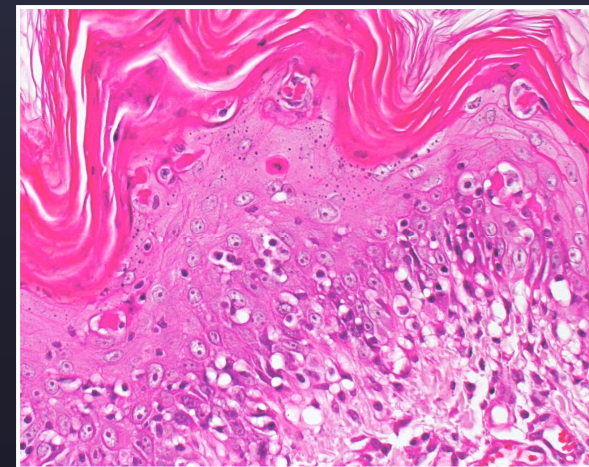
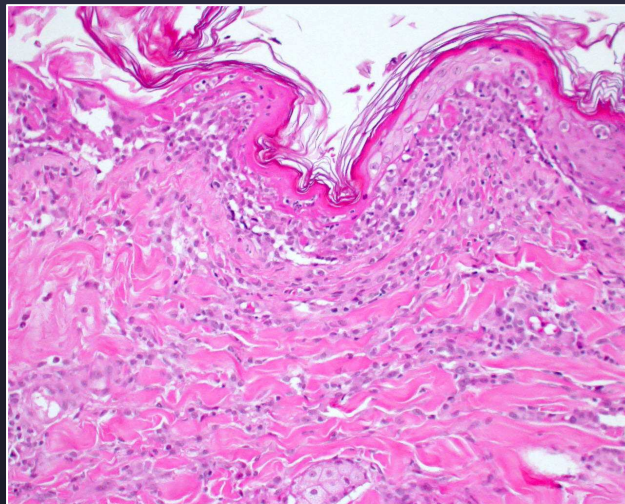
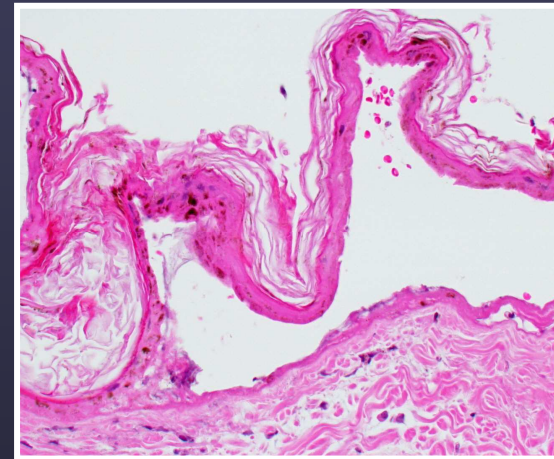


*The epidermal necrosis
“wicks” down hair follicles*

EM/SJS/TEN

Conflicting Literature and Histopathology

- SJS/TEN= apoptosis?
- EMM= necrosis?
- Both are incorrect
- Both are correct



Hypotheses

(1) Multiple pathways of cell death in drug eruptions

apoptosis

necrosis

(2) Diffuse basal cell apoptosis → ischemic necrosis

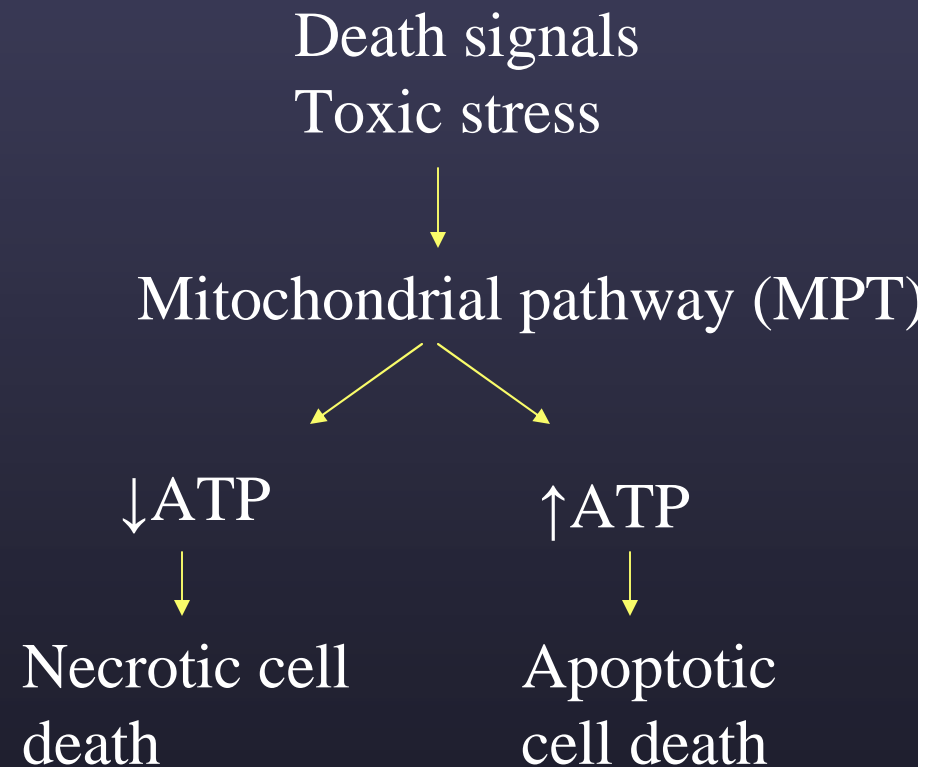
(3) Apoptotic mechanisms to tissue undergoing constant programmed cell death?

(4) Basic histopathology is a poor indicator of the type of cell death?

(3) Animal diseases not equivalent to human

Shared pathways leading to cell death??

- Necroapoptosis
- New models of cell death



Lemasters, John J. American Physiologic Society, 1999

Drug eruptions and the Literature



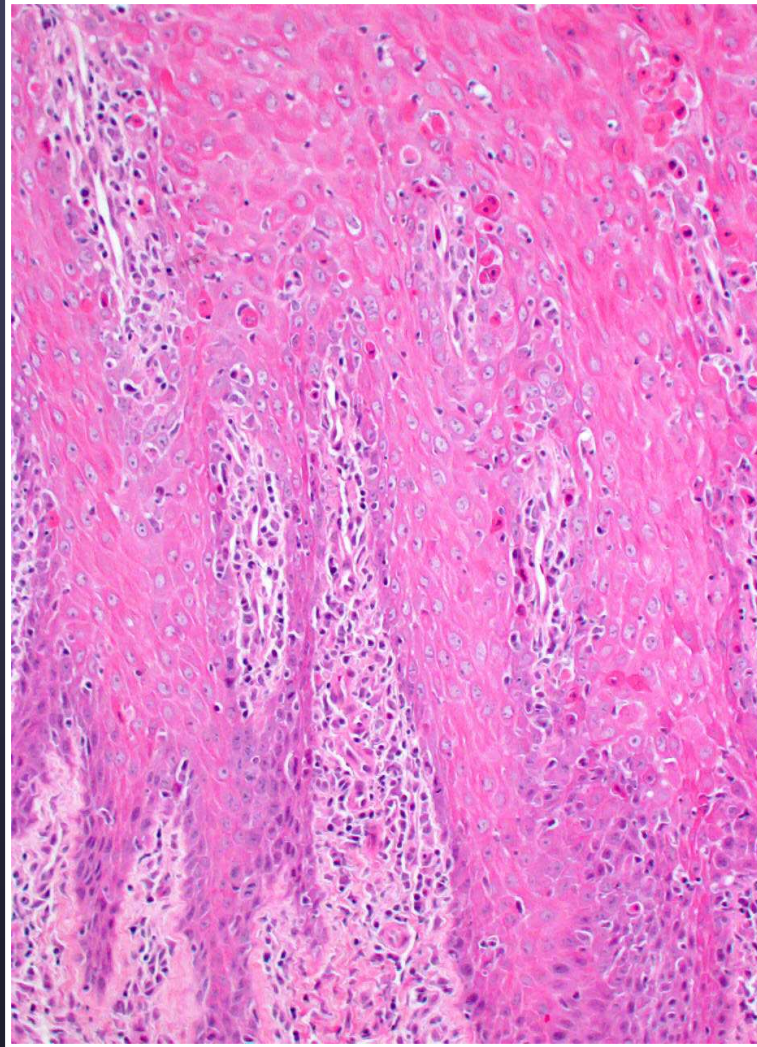
Courtesy of R.Dunstan, modified

EM in an Alpaca

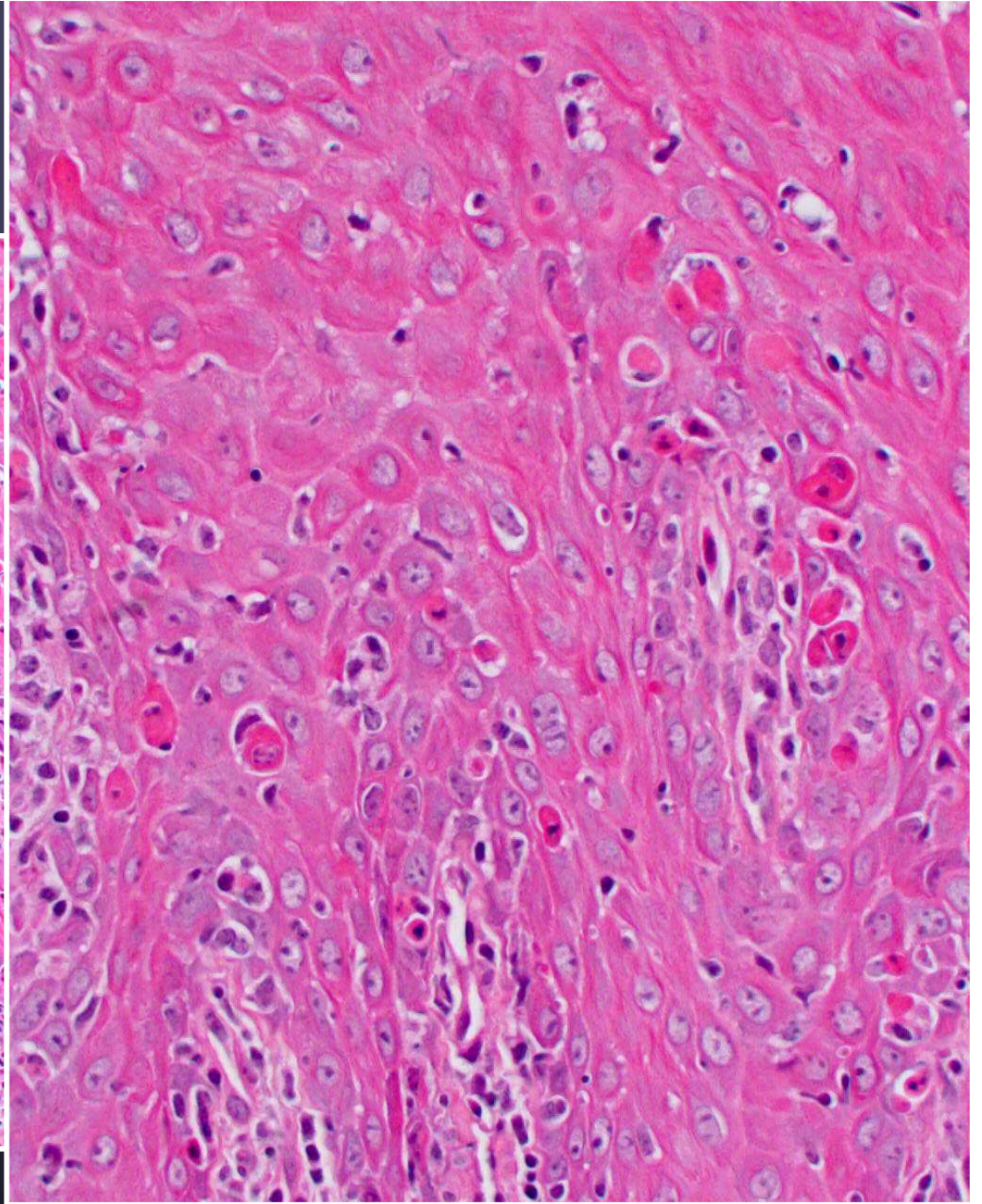




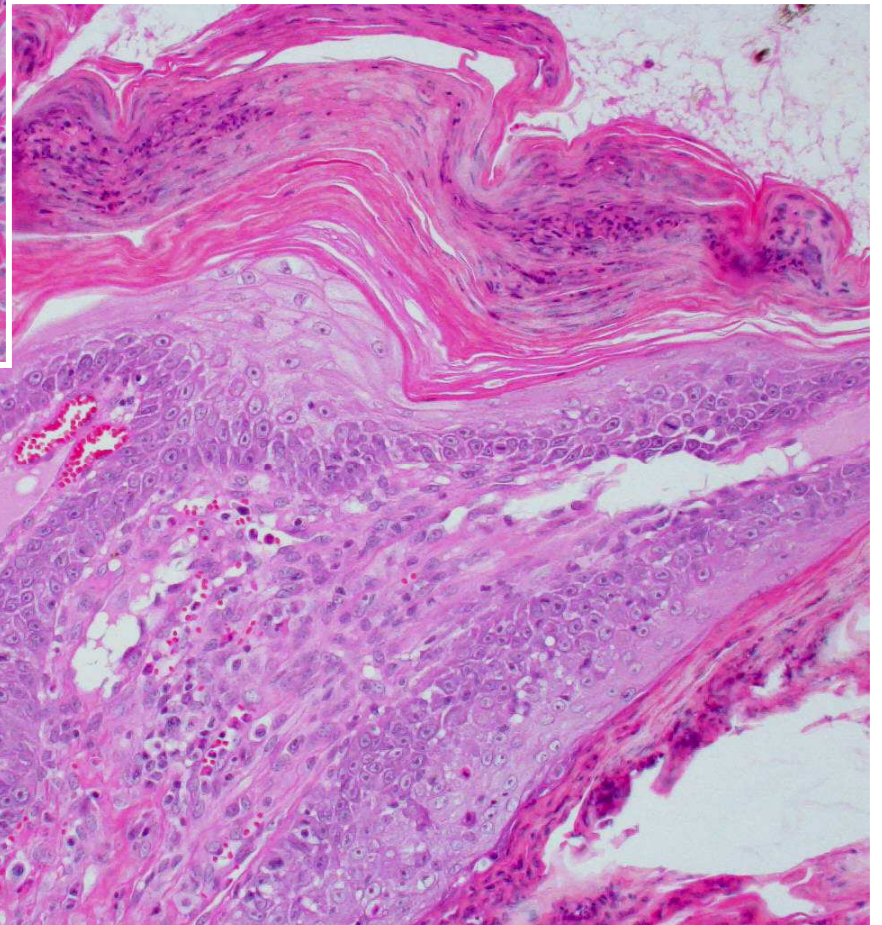
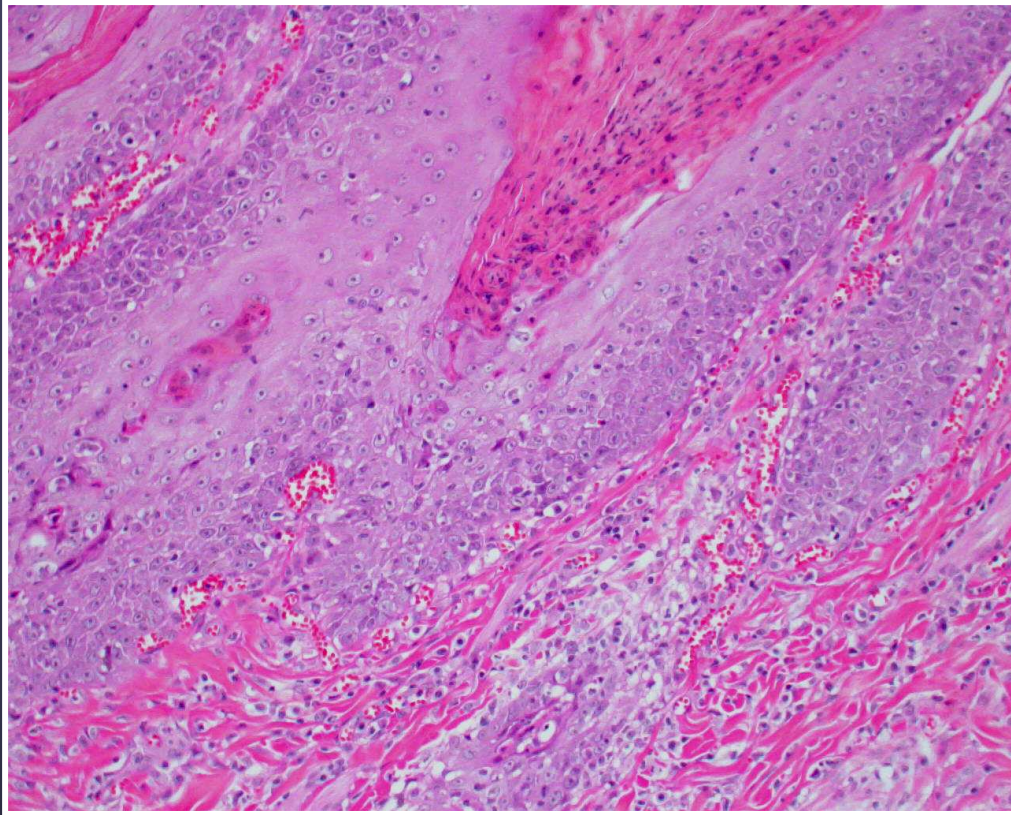
EM



EM



Feline Erythema Multiforme



**6 mo., DSH, post-
rabies vaccine**



9 yr, DSH

*Post-mortem
Thymoma associated dermatosis*