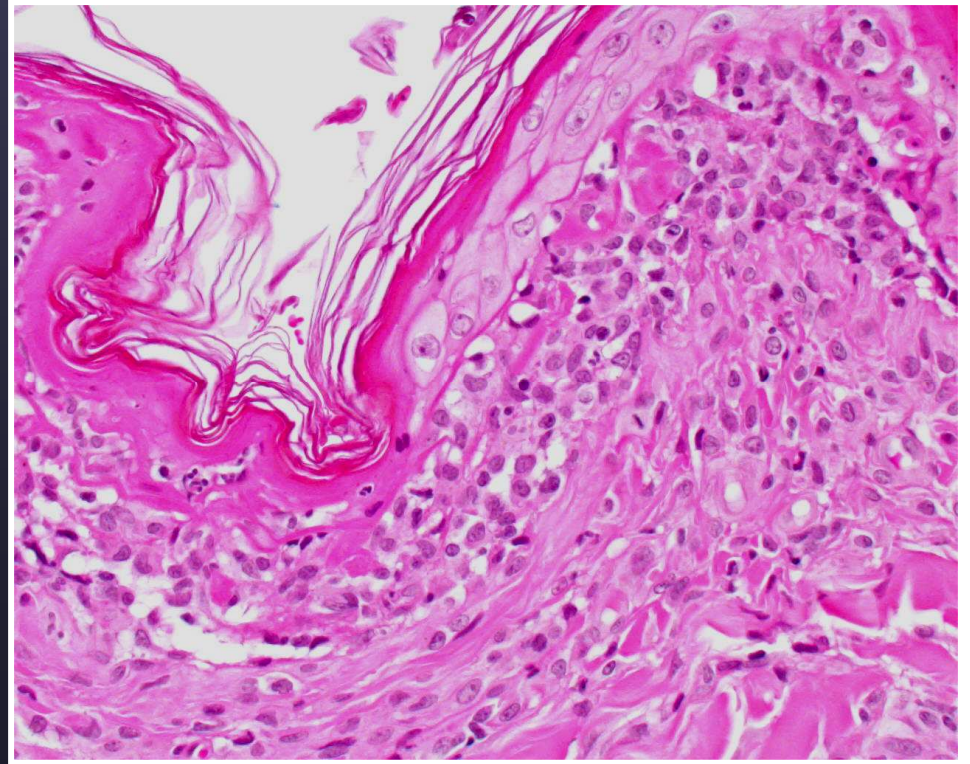
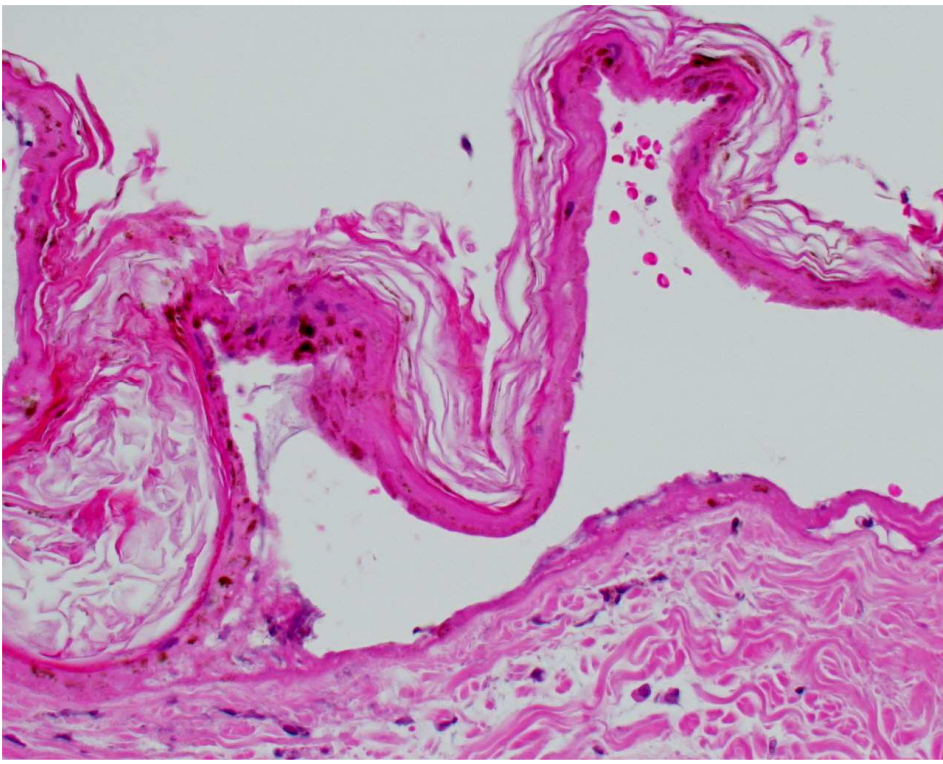
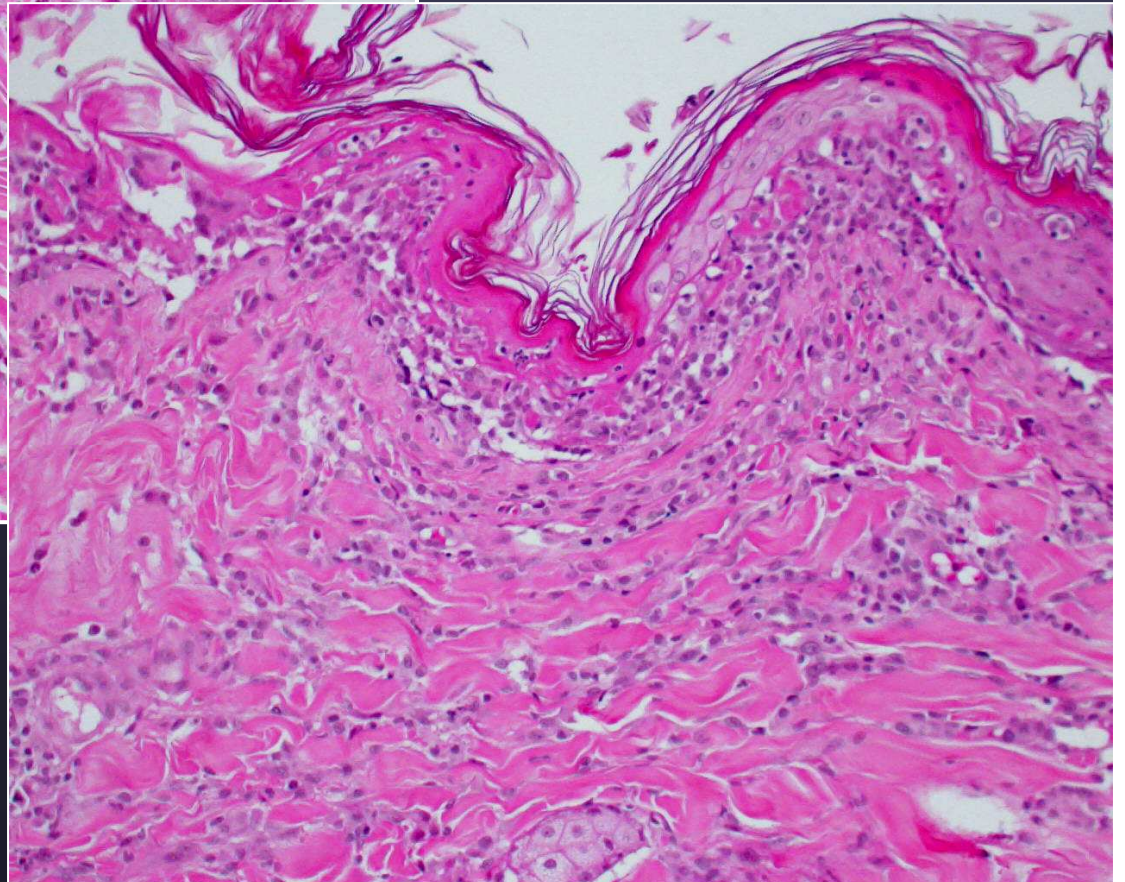
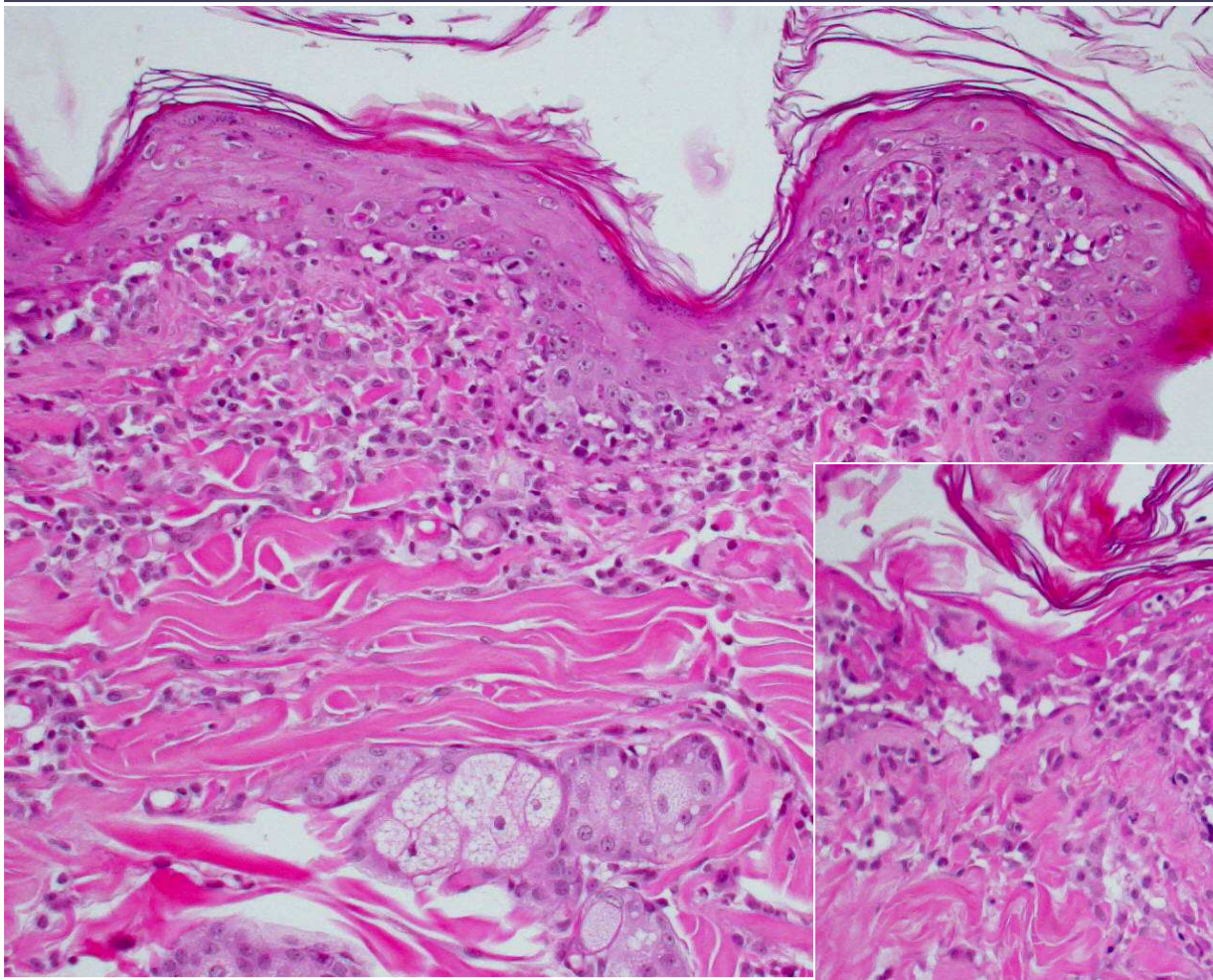


# EM/TEN Overlap??





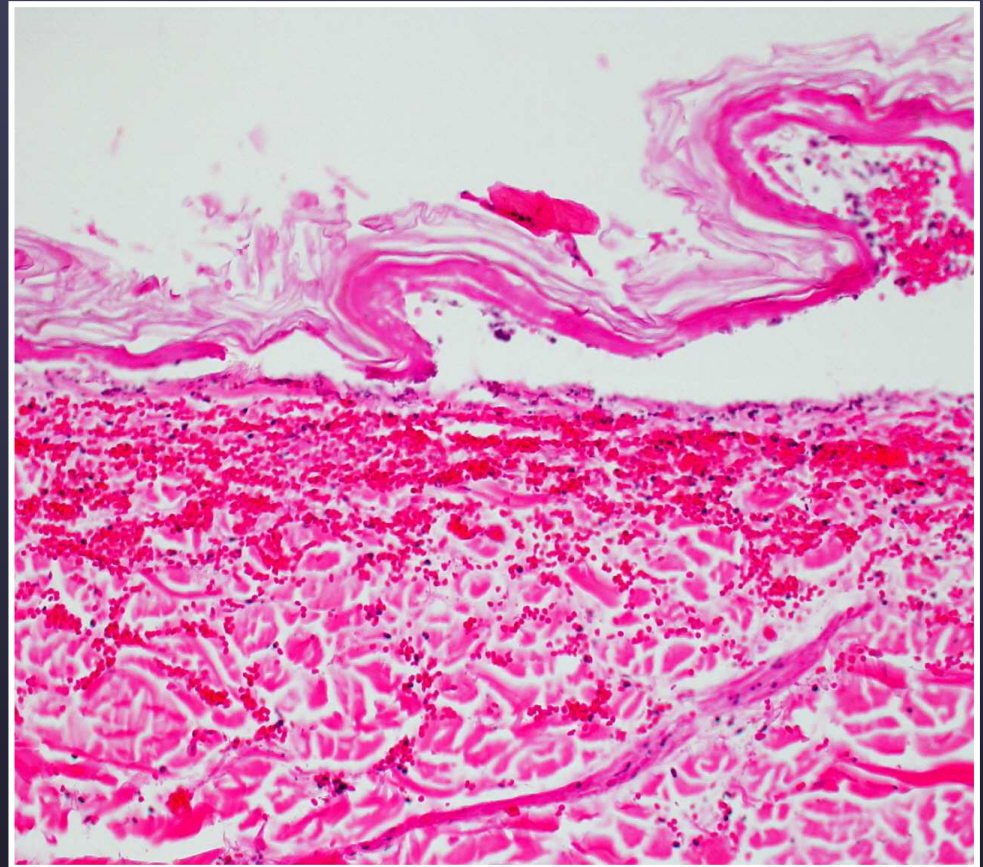


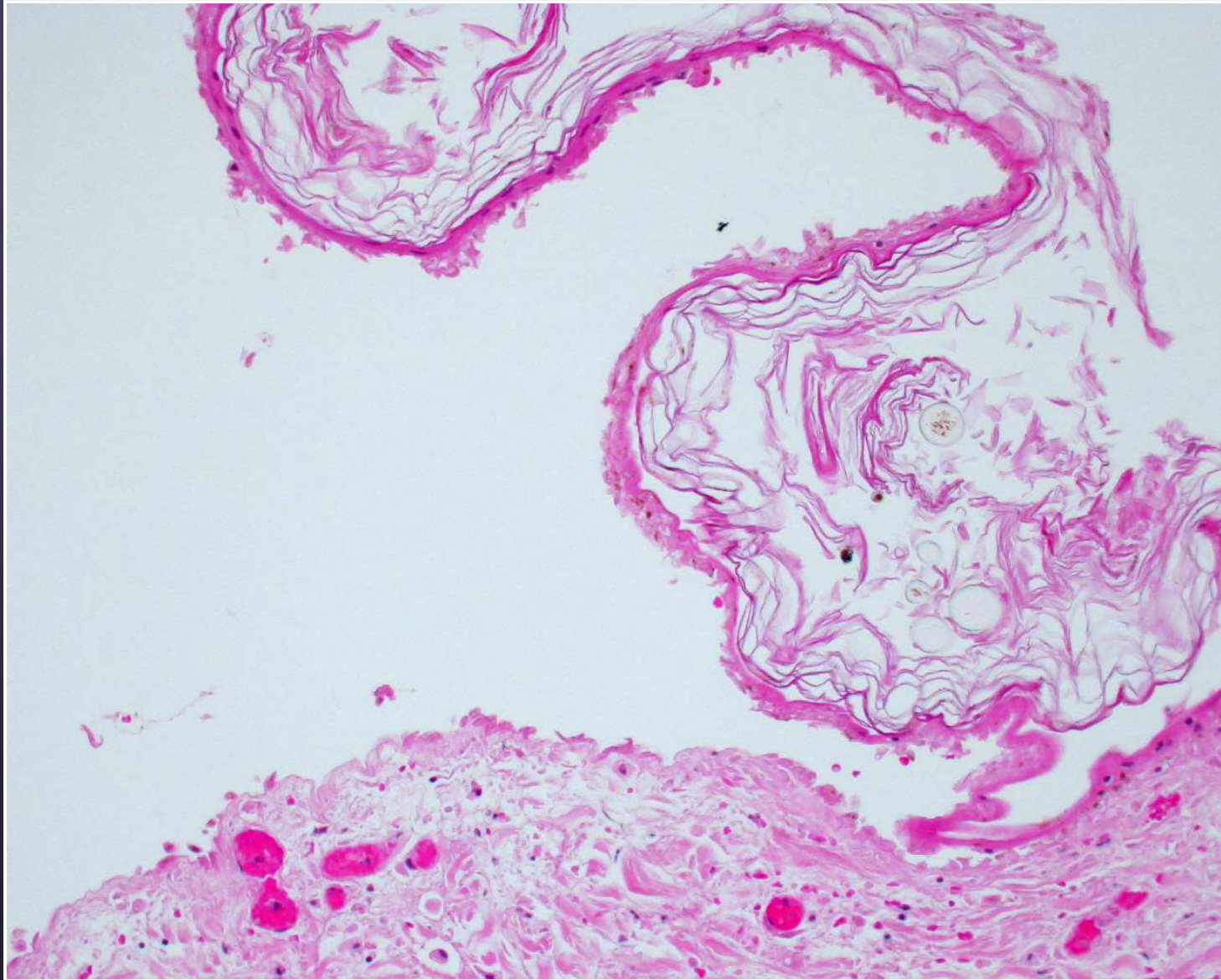
*Current theory is that clinical extent  
and distribution distinguishes EM from EMM/SJS  
and TEN and not histopath?*



# TEN and Coagulation Necrosis

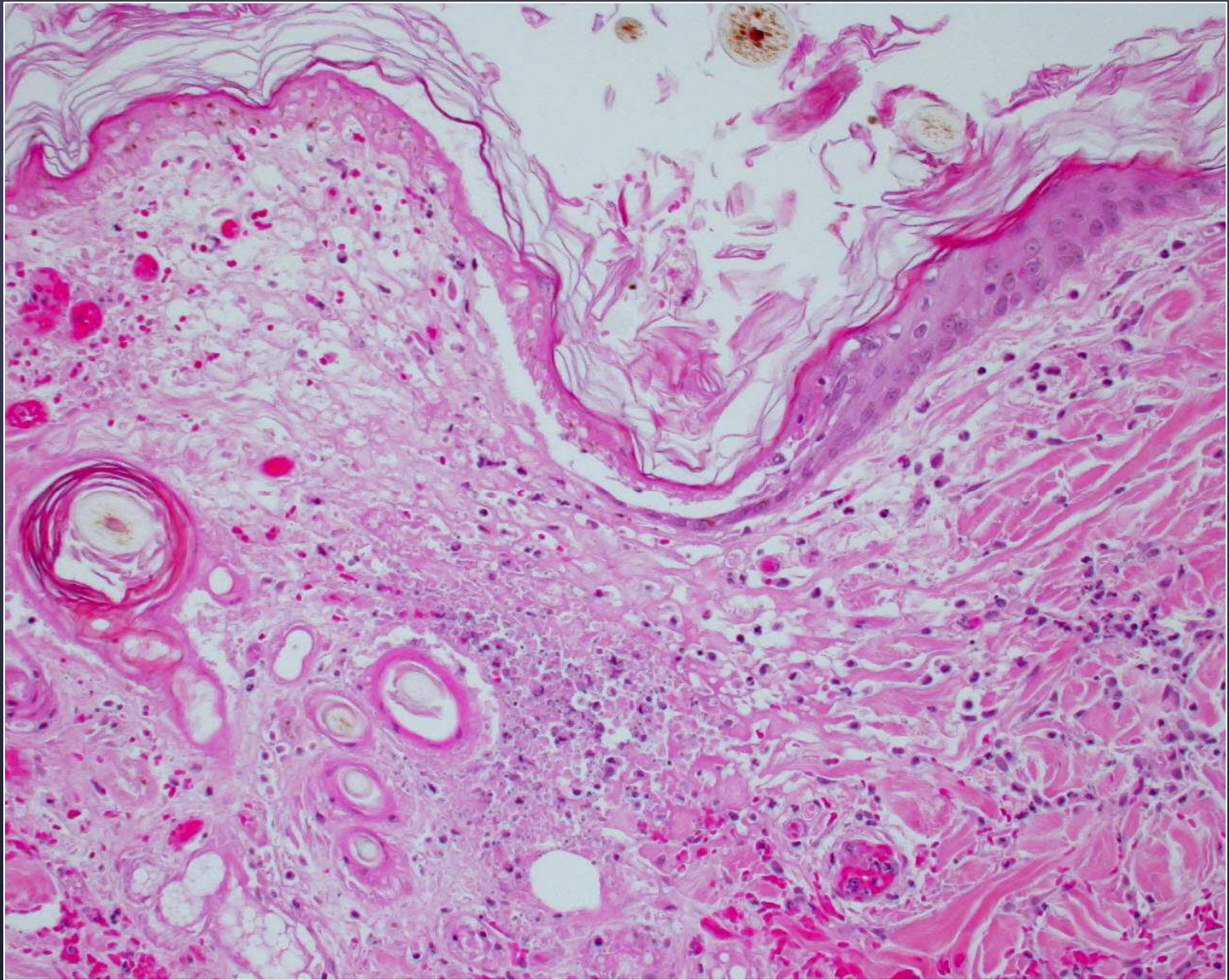
- Preservation of architecture
- Loss of cellular detail
- Typical of hypoxic cell death





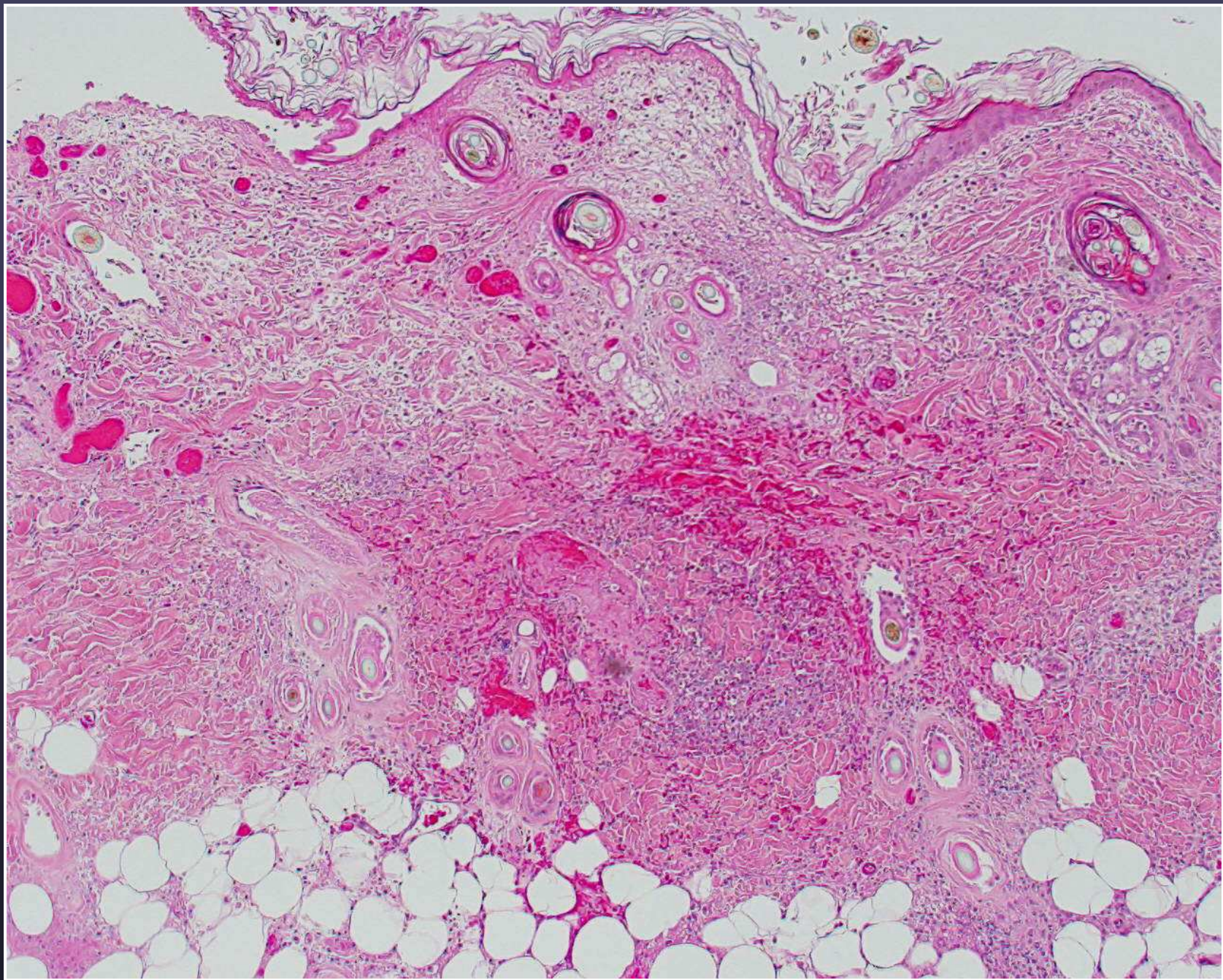
Acute epidermal necrosis



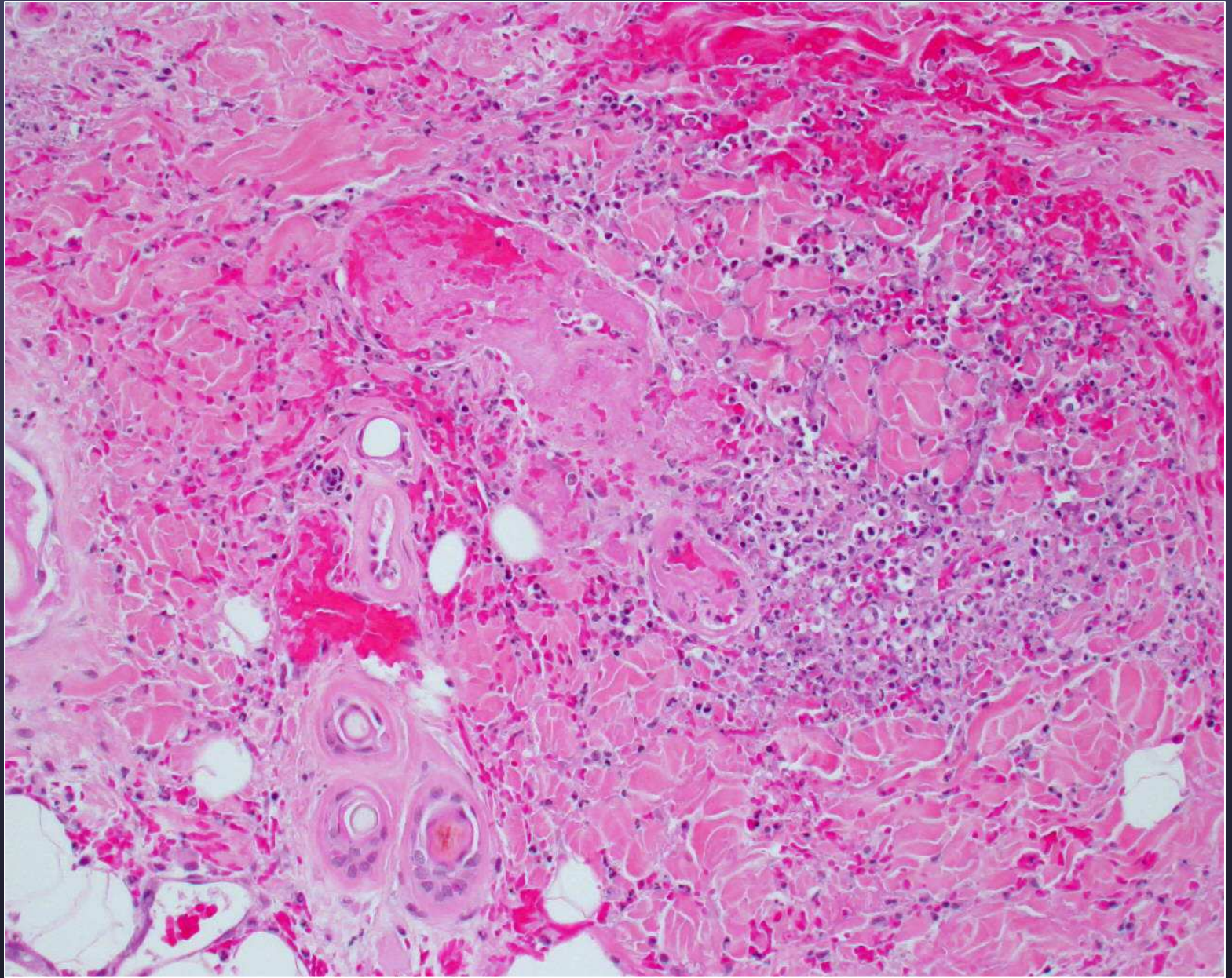


**Cutaneous Infarct**



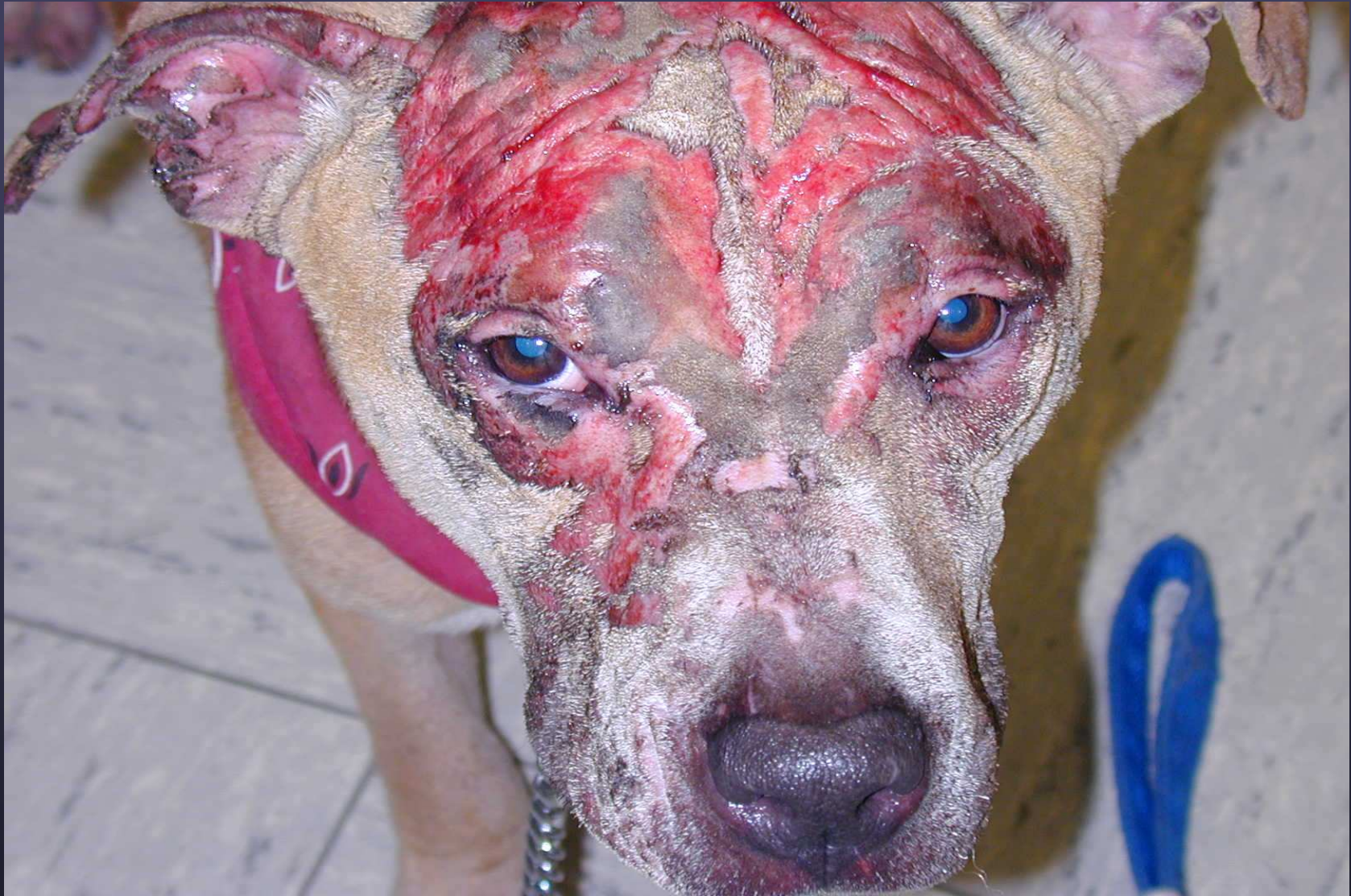






Fibrin thrombus





Acute thermal burn