



Cyclic flank alopecia

Note the infundibular hyperkeratosis, malformed follicles and epidermal hyperpigmentation





Atypical distribution of hair loss in cyclic flank alopecia



Atypical distribution of hair loss in cyclic flank alopecia





*Courtesy of WM Miller, DW Scott.*

- Alopecia with annular areas of crusting
- Typical of cyclic flank with interface dermatitis in a boxer

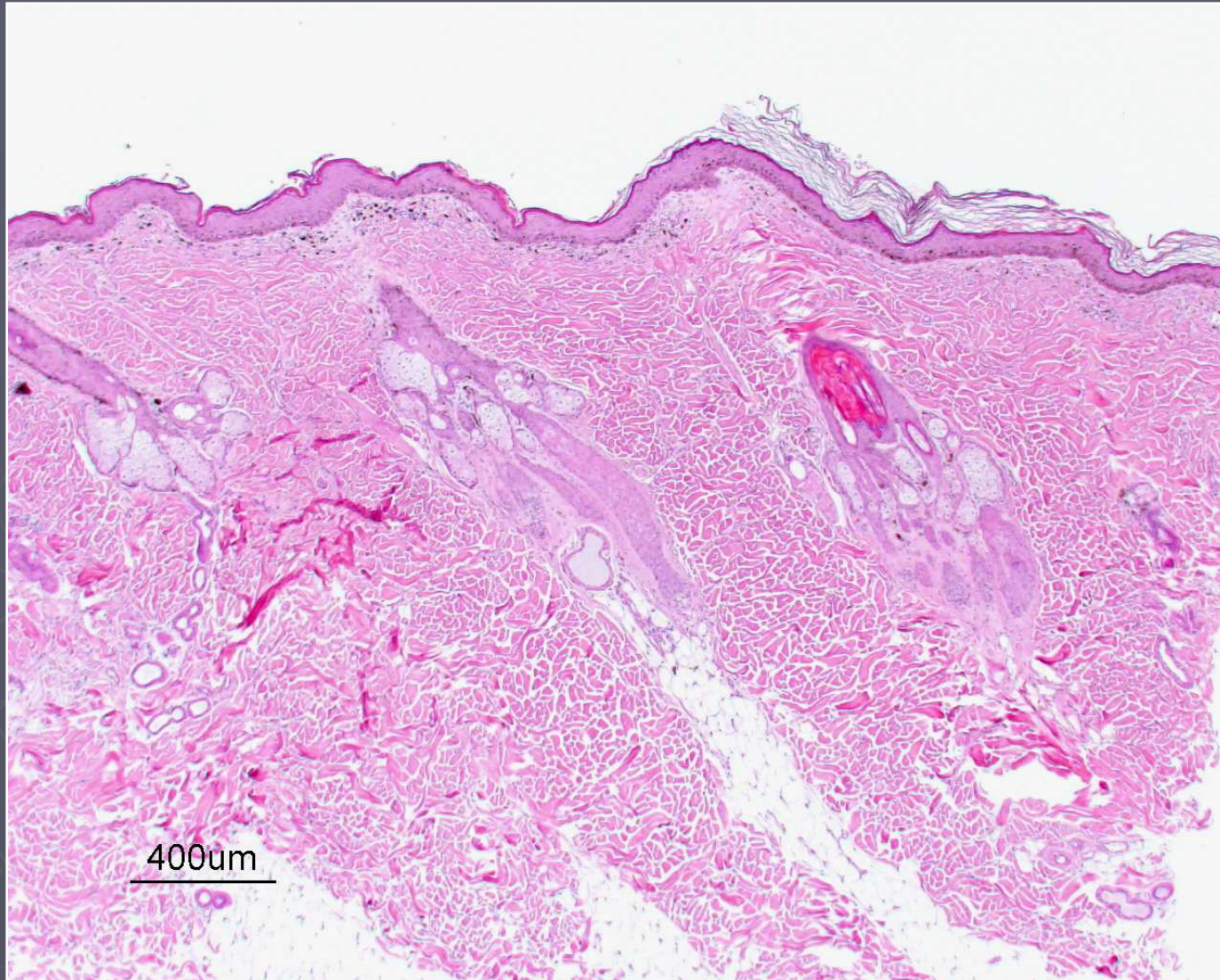
# CFA with Interface Dermatitis



Rachid, *et.al.* Concurrent follicular dysplasia and interface dermatitis in Boxer dogs.  
*Veterinary Dermatology* **14** (3), 159-166, June 2003.

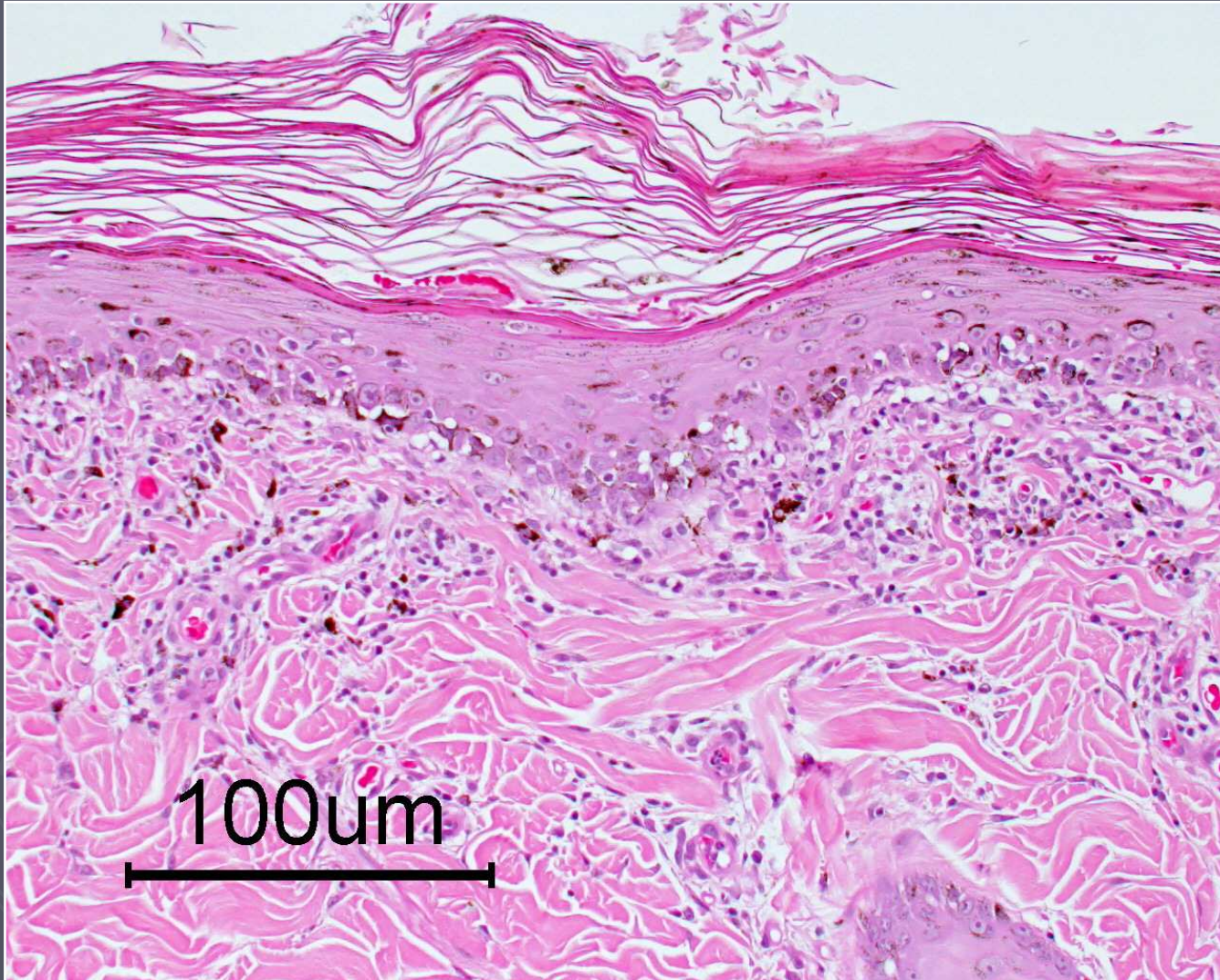


# Cyclic Alopecia with Interface Dermatitis





# Cyclic Alopecia with Interface Dermatitis



Note the vacuolar change in the basal layer, pigment drop-off and subtle blurring of the DEJ

# CFA with interface

- ▶ Boxer dogs
- ▶ Annular crusted papules/plaques in areas of alopecia and hyperpigmentation
- ▶ Interface dermatitis (resembles Cutaneous lupus) + marked follicular keratosis
- ▶ Lesions fluxuate with alopecia
- ▶ Idiopathic





Chesapeake bay retriever alopecia



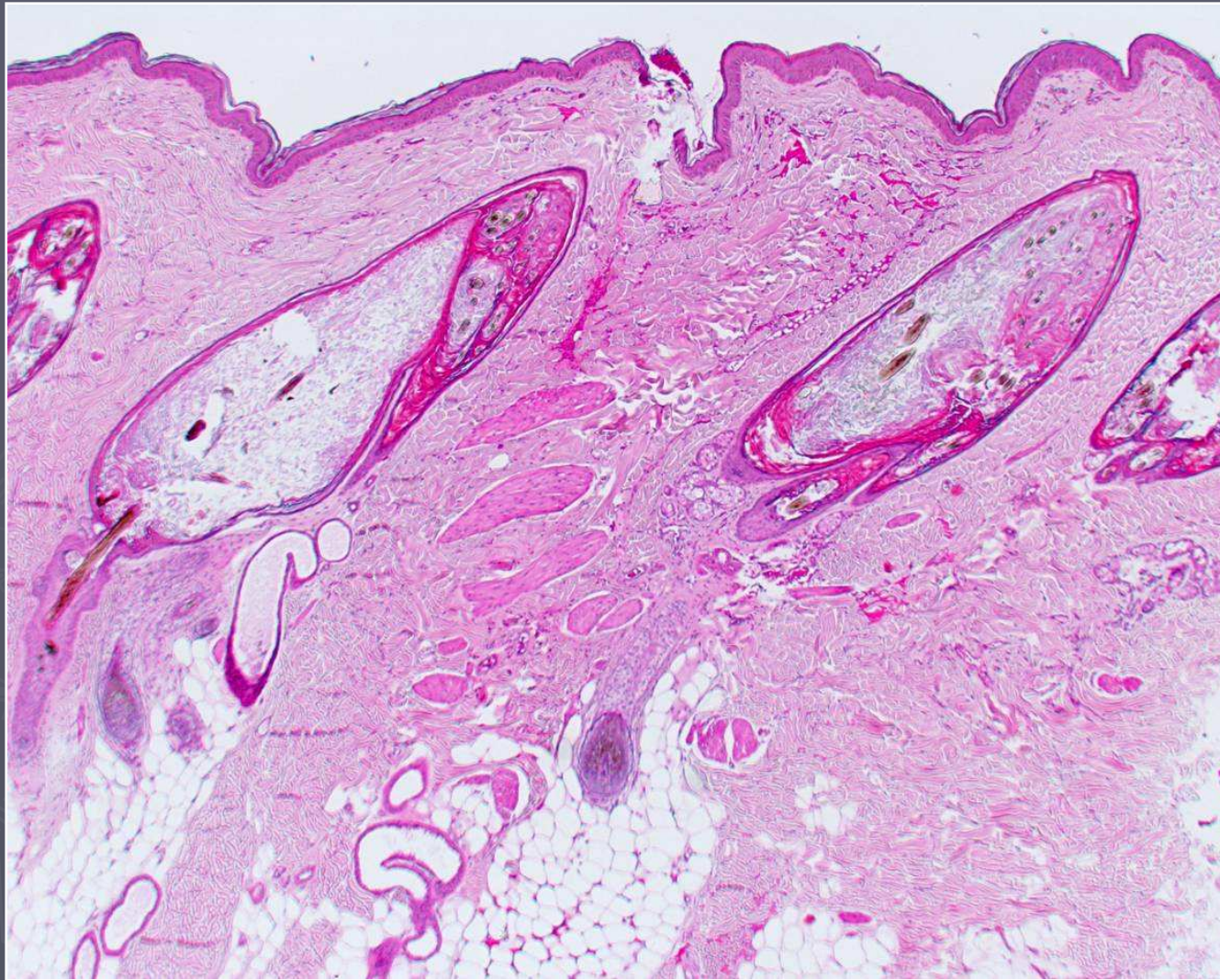
CBR alopecia







# Chesapeake Bay Retriever Alopecia





# Chesapeake Bay Retriever Alopecia

