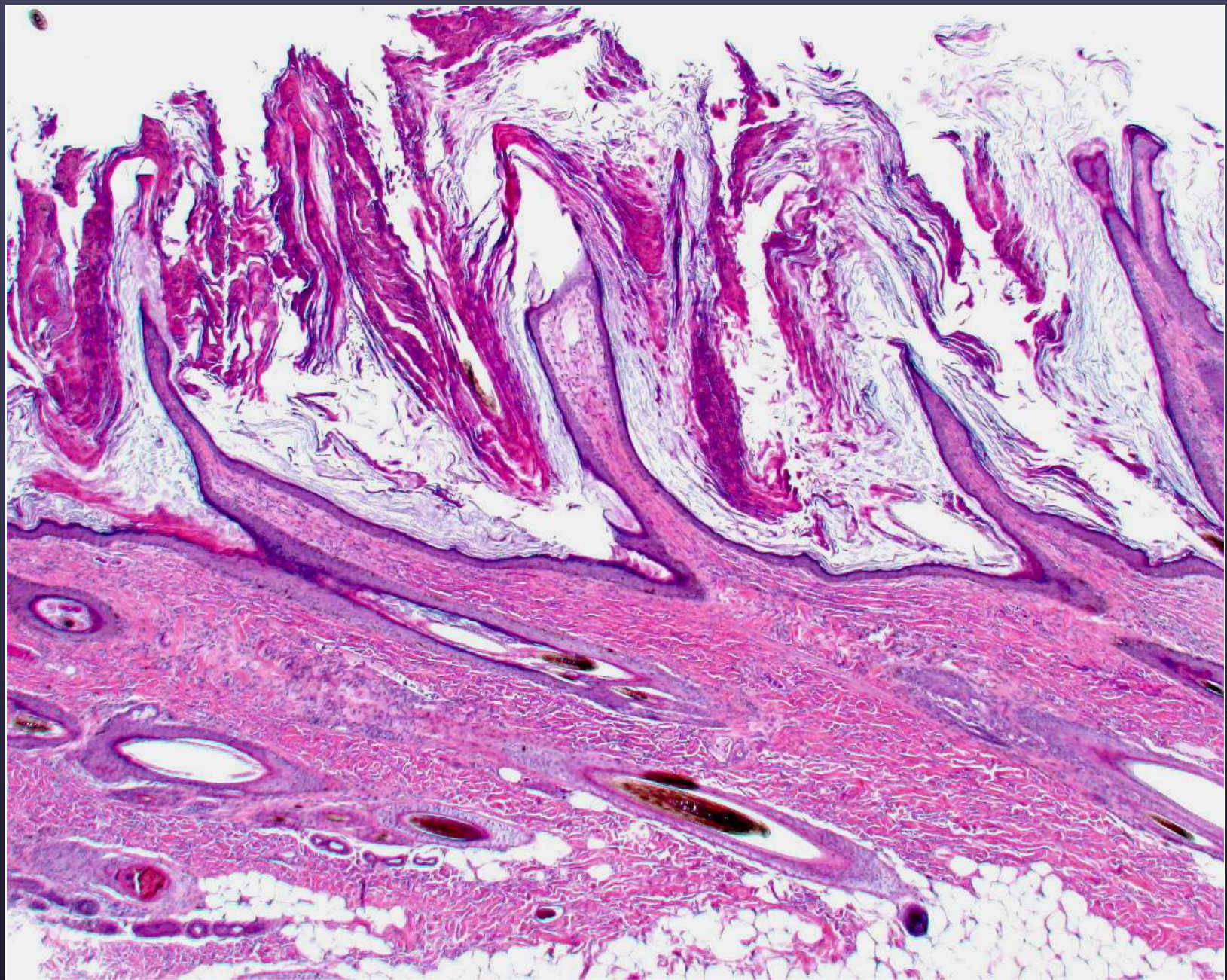
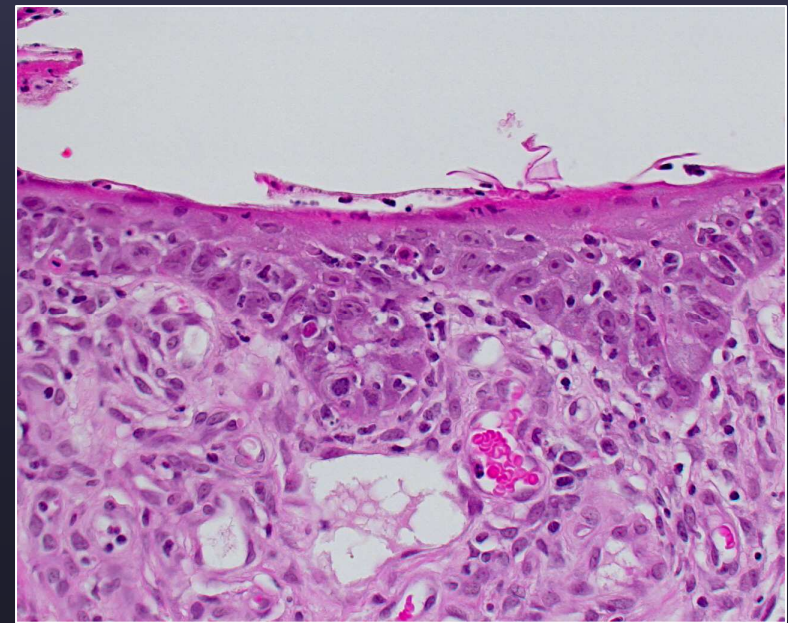
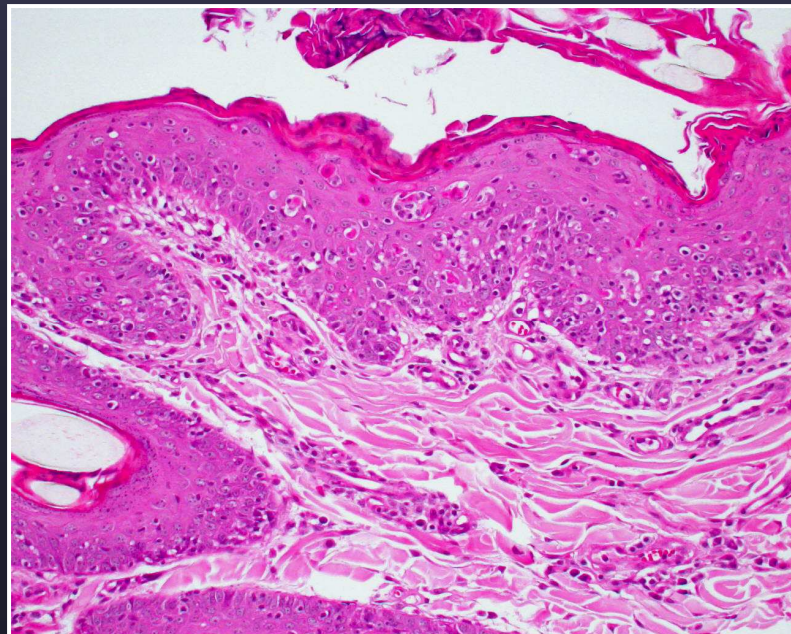
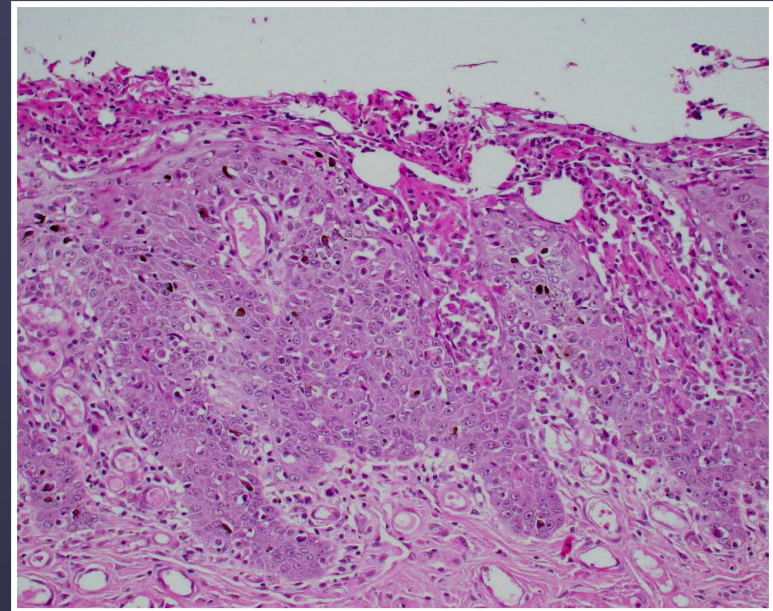
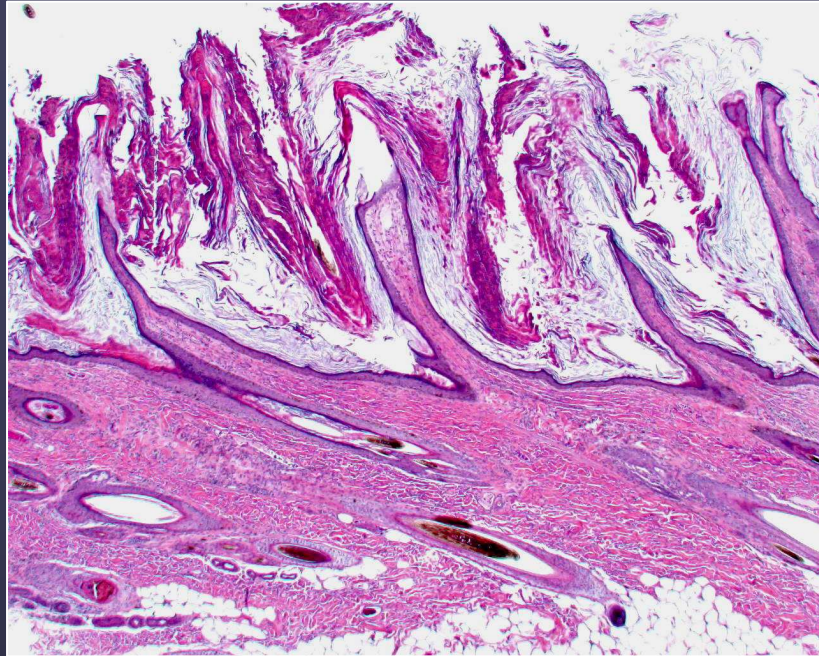


*This case is of a German shorthaired pointer
cutaneous exfoliative lupus
Be aware of the marked histopathologic
variants of EMM/SJS and possible overlap
with other disorders*



Superficial EM

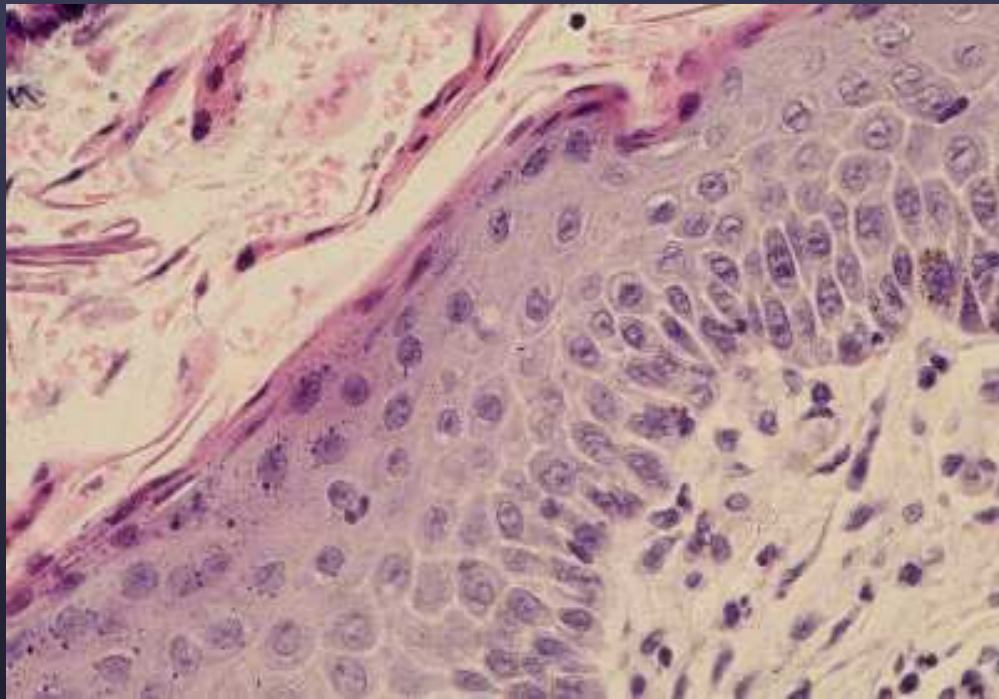


Histopath of EM variants

Possible Variants

- Hyperkeratotic
- Acantholytic
- Papillated
- Follicular
- Ulcerative/atrophic
- Duration/Age of the lesion/Site Selection
- Multiple yet un-named disorders

Individual Necrosis of Keratinocytes



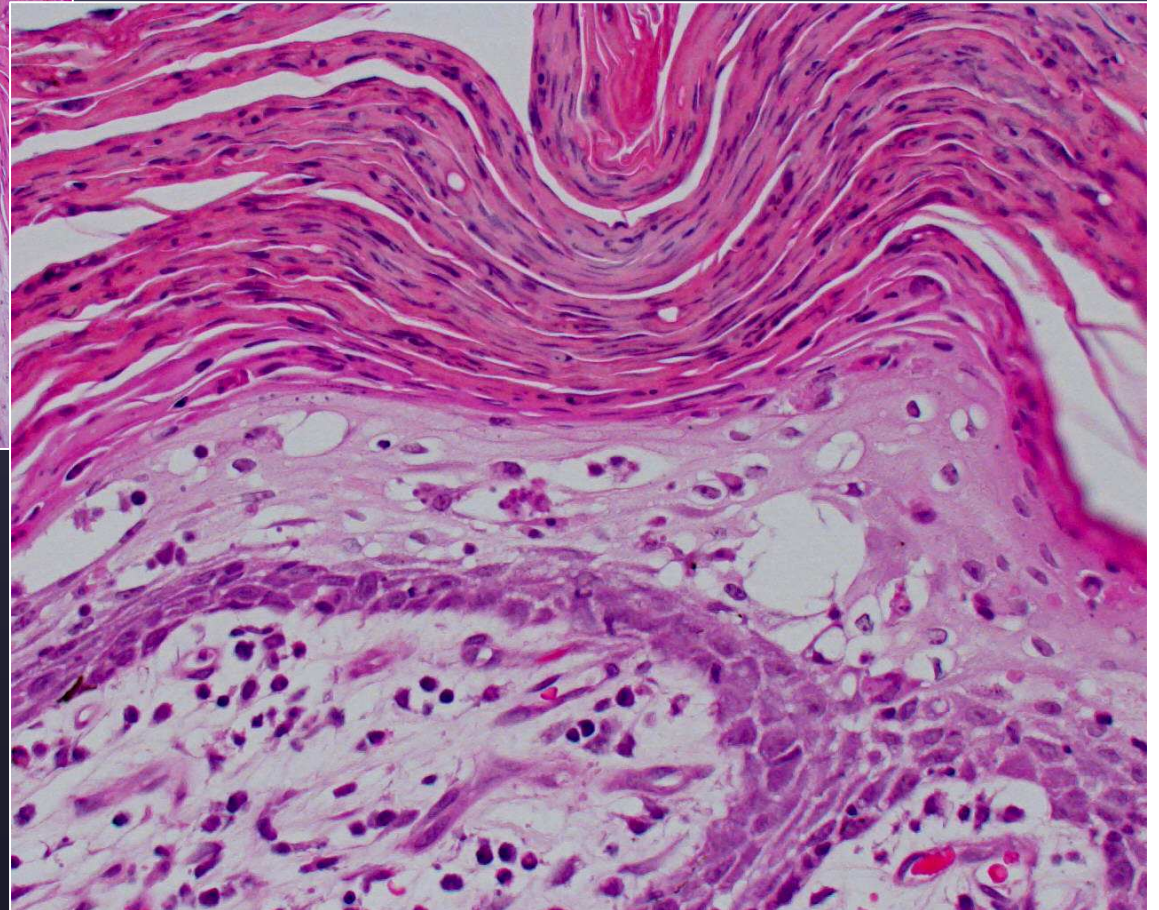
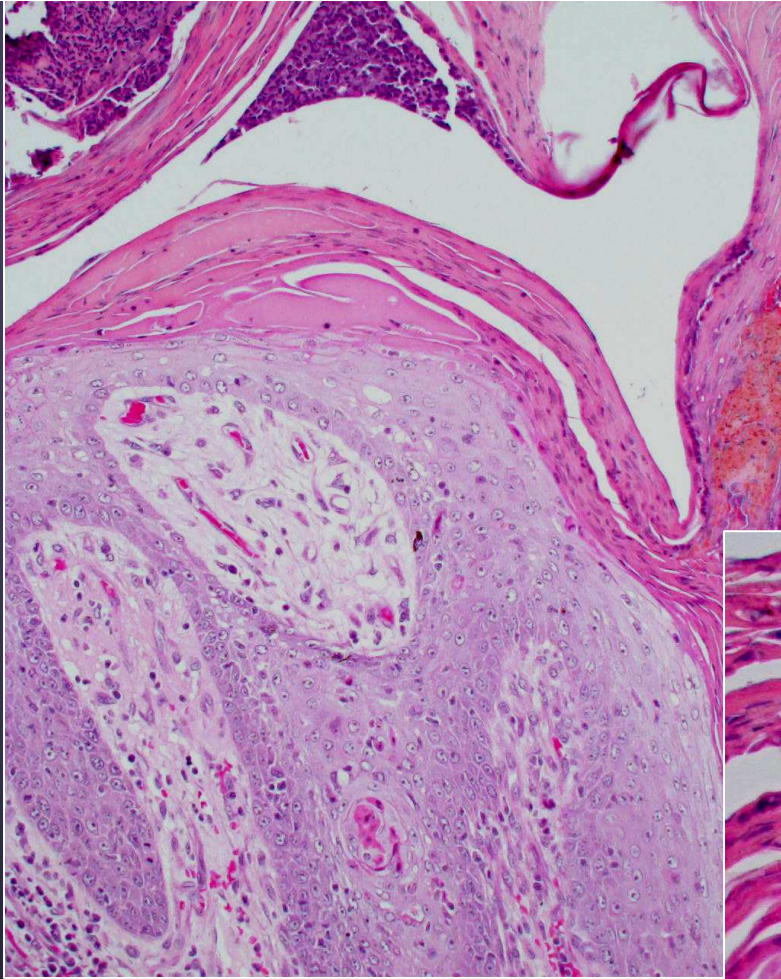
← Superficial pattern

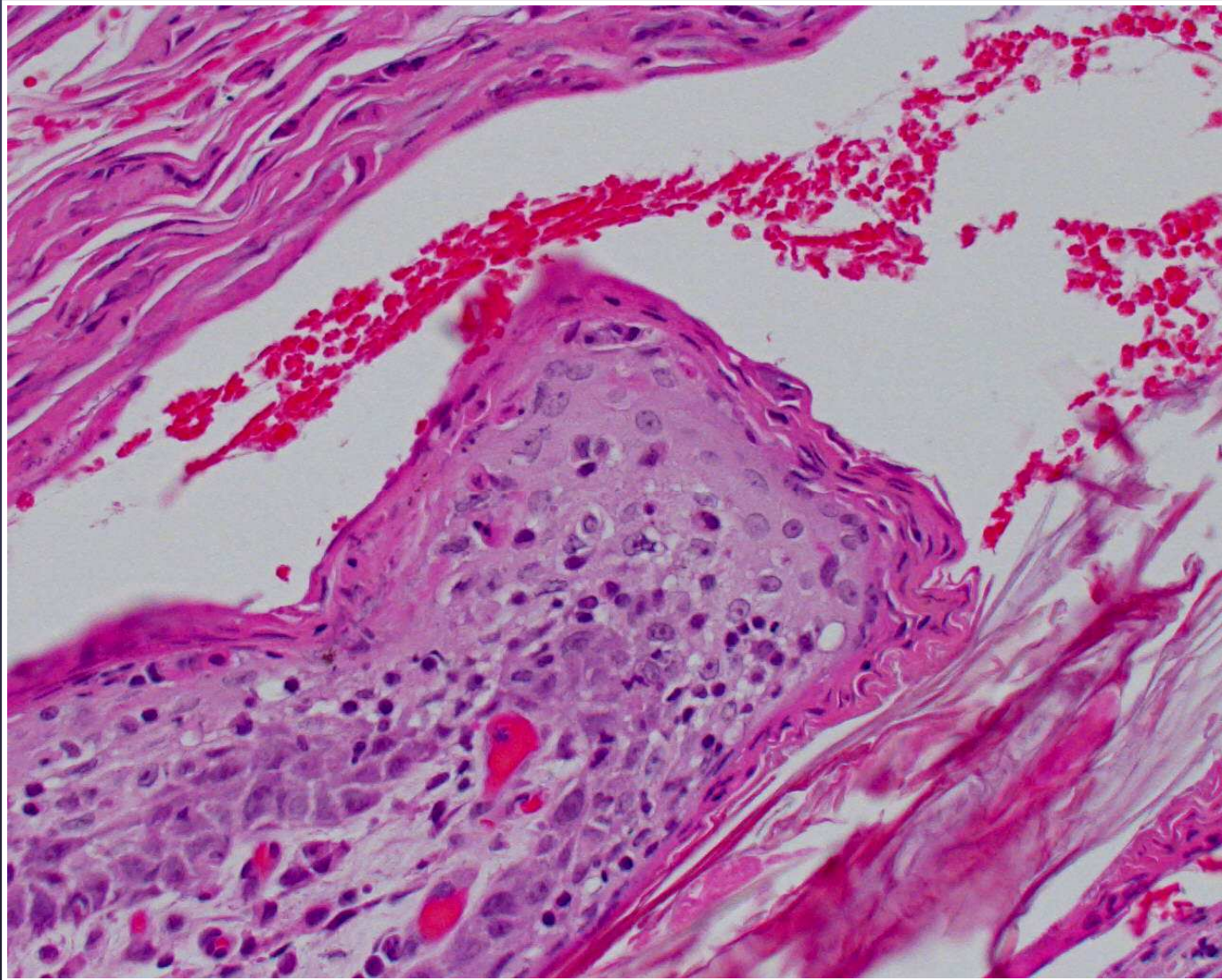
⎵ Erythema multiforme pattern

← Lupoid pattern

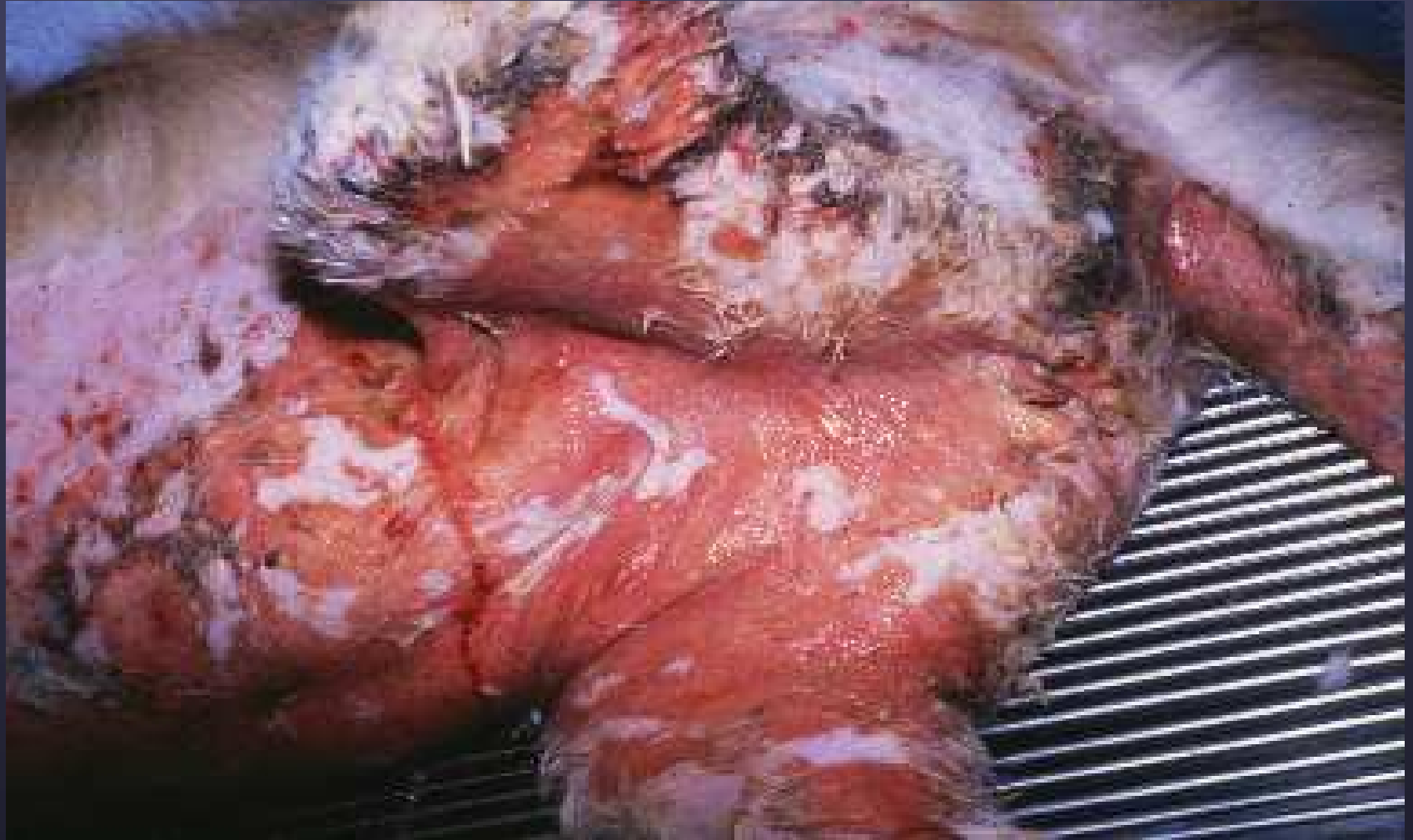
Maybe explained by underlying immune mechanism and site targeted in epidermis

*Individually necrotic keratinocytes
often seen in
Superficial necrolytic dermatitis
(hepatocutaneous syndrome)*





Superficial necrolytic dermatitis



Toxic epidermal necrolysis