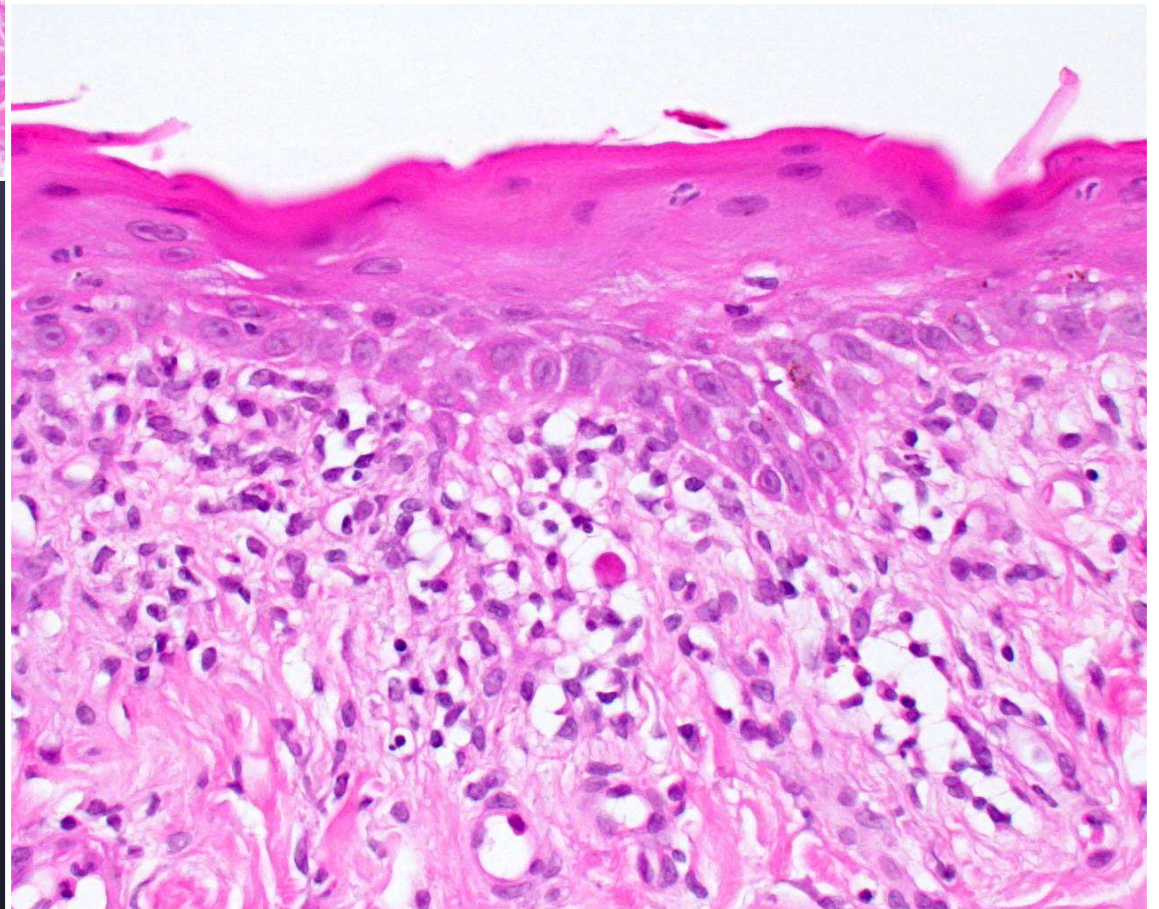
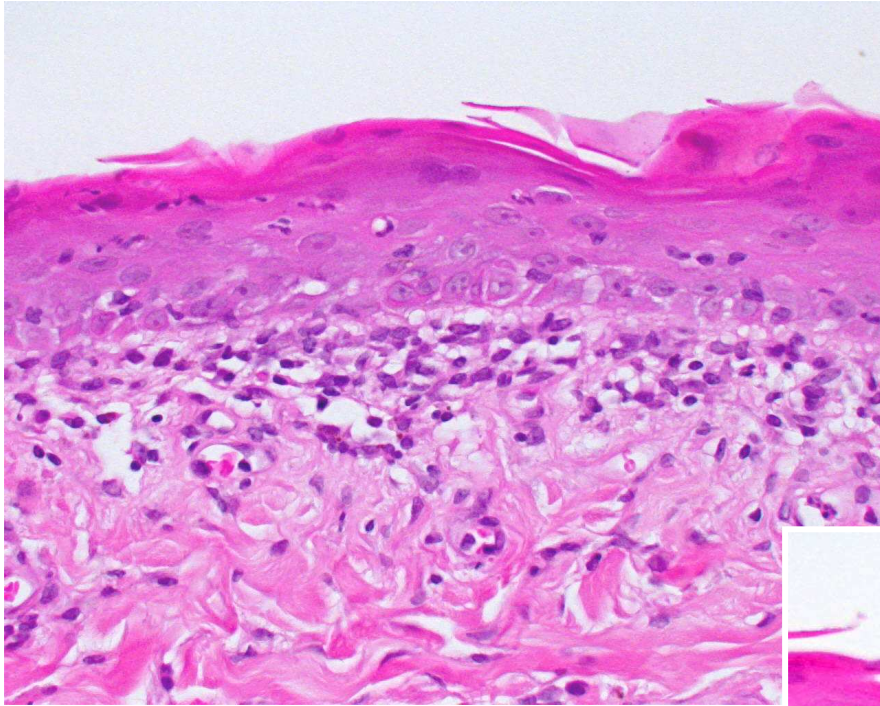
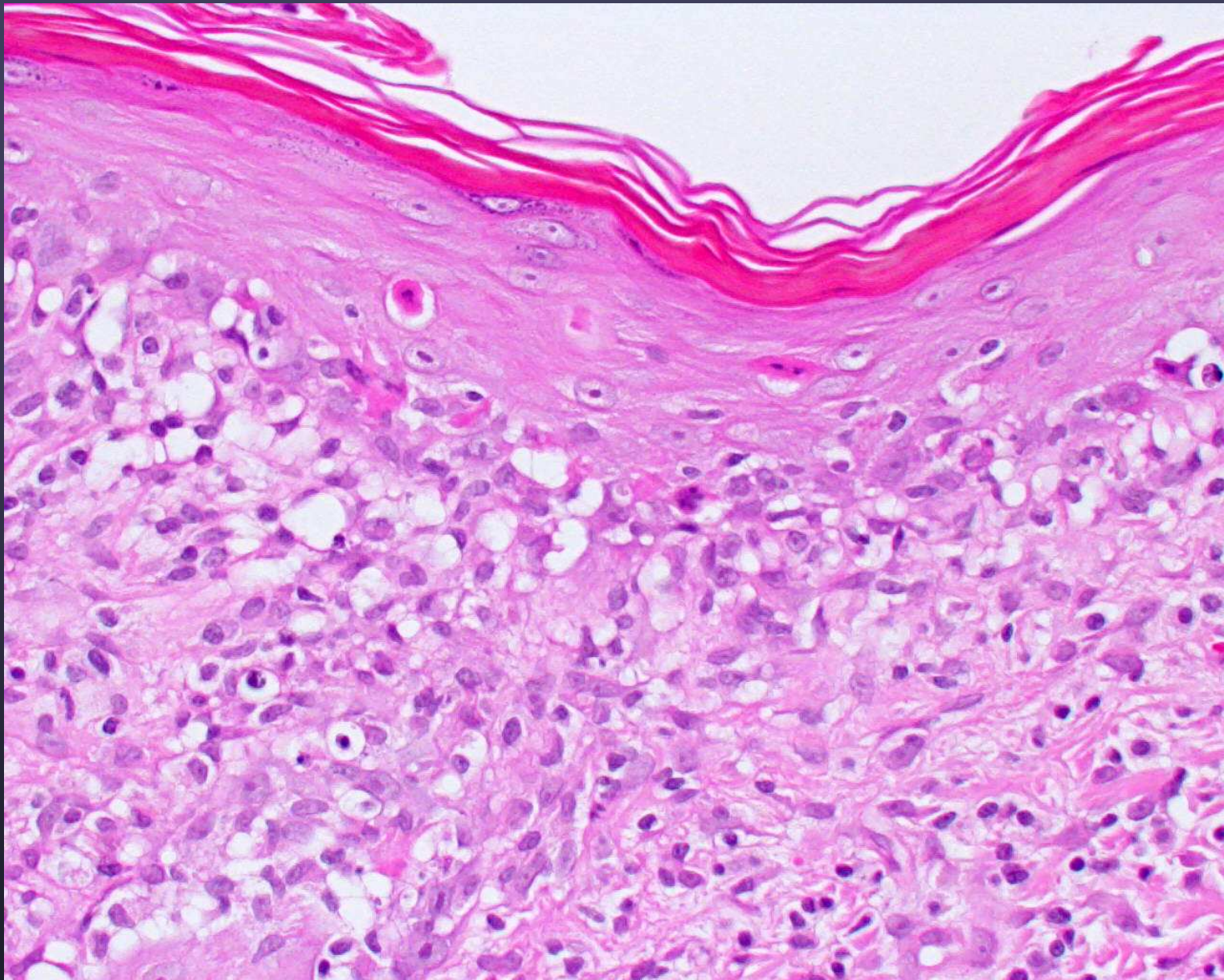


Early EM





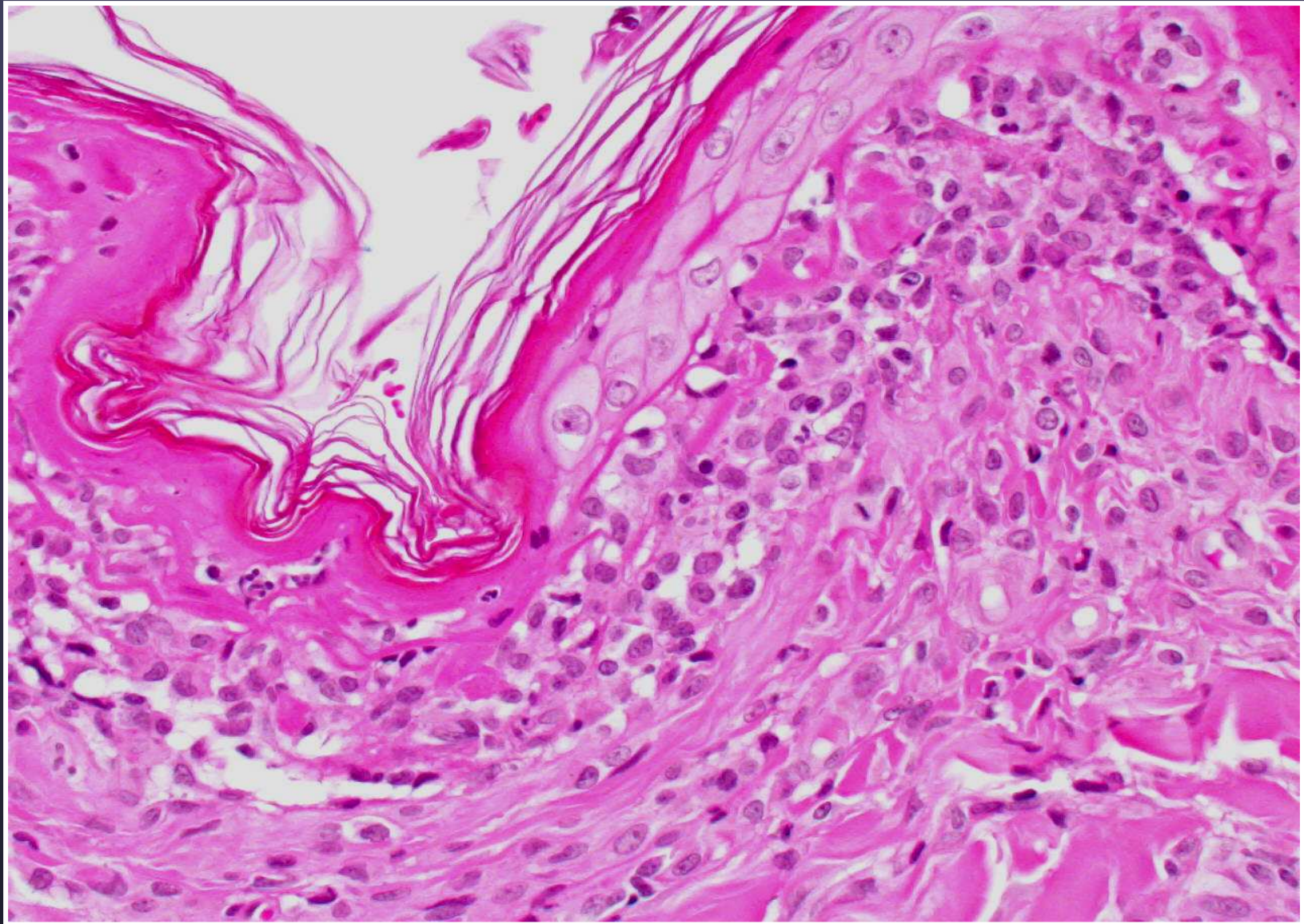
Erythema multiforme



*Necrotic epidermis
peels with gentle pressure*

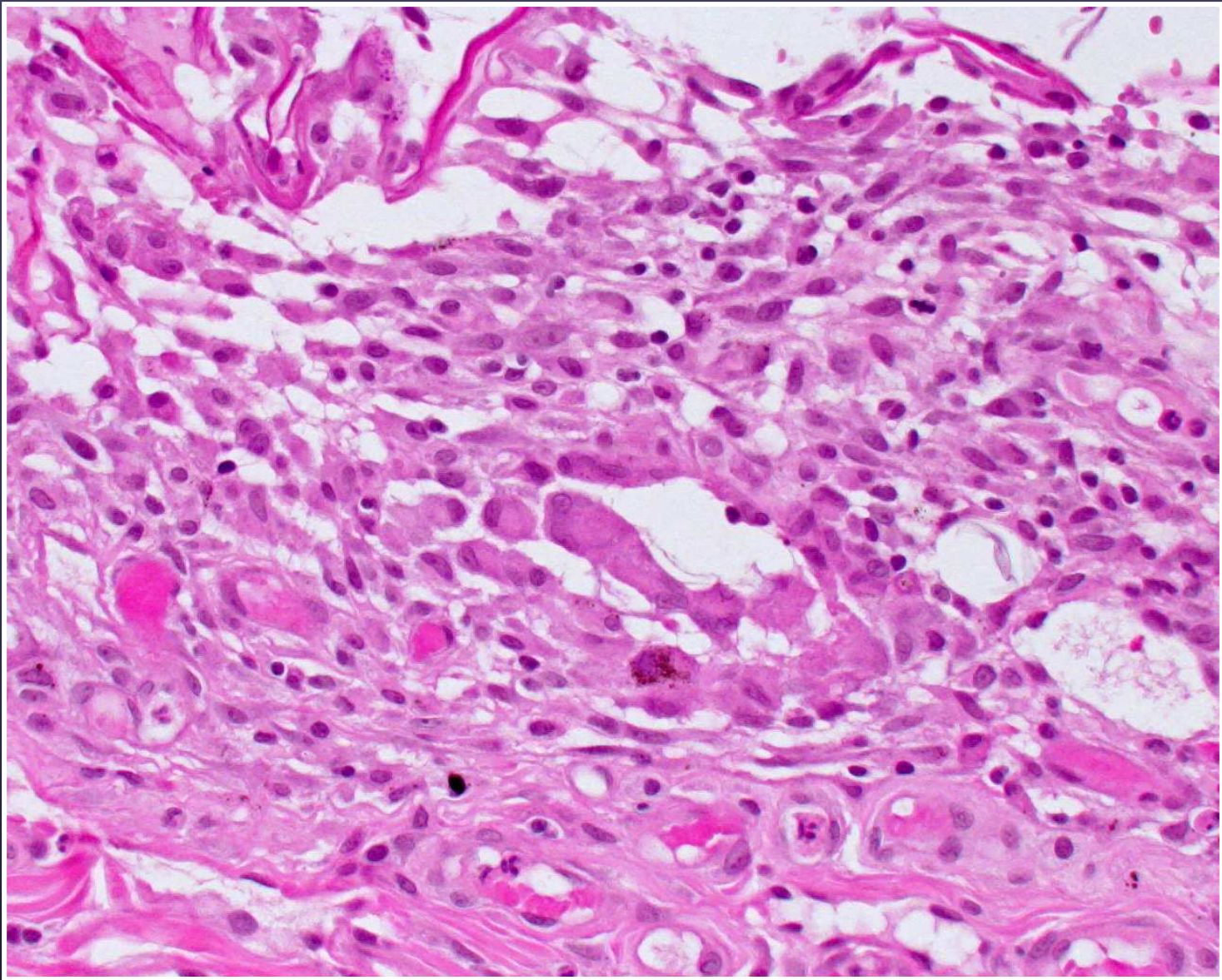
9 yr, old, MixB

EMM/SJS

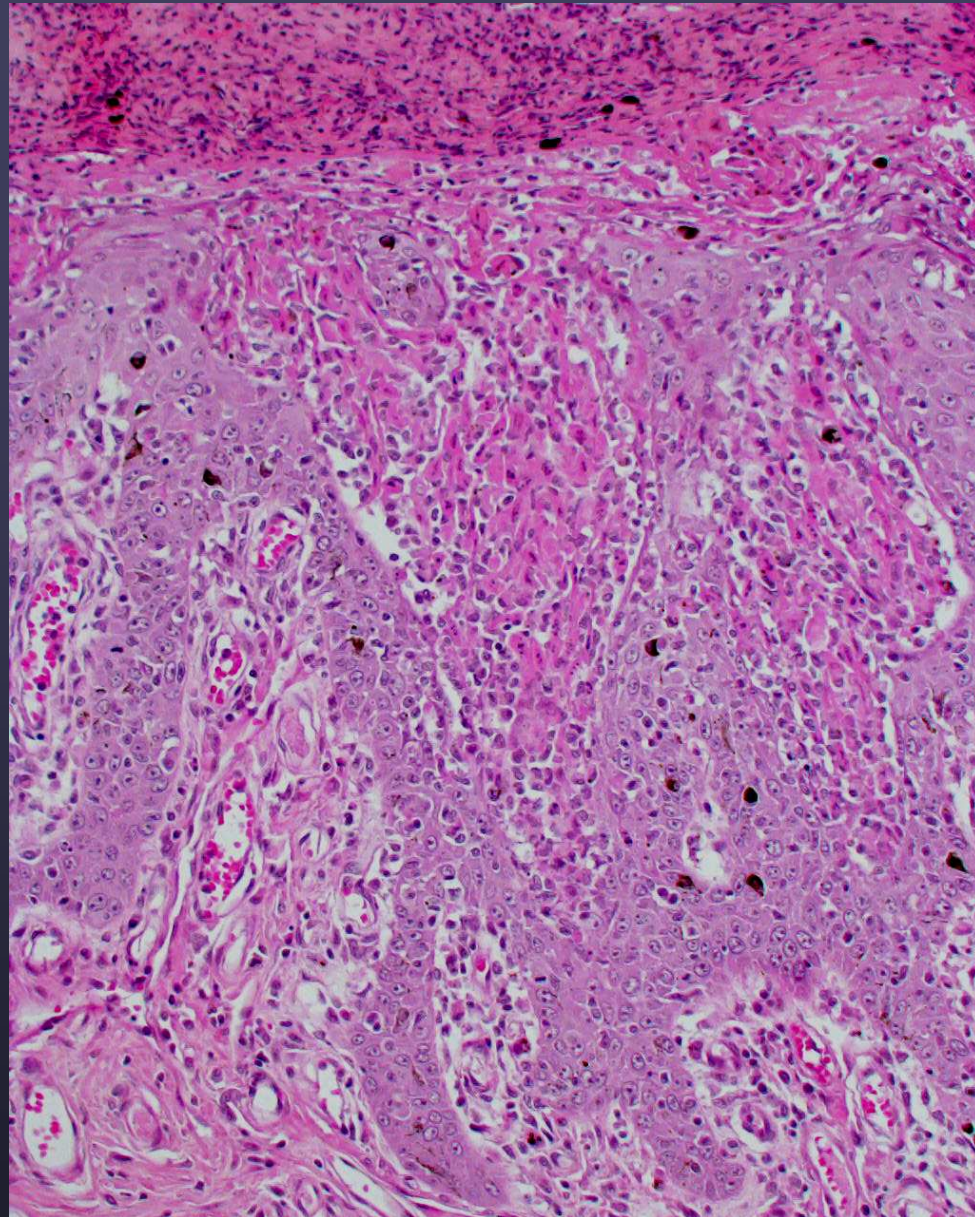


Sept 2002

*This case is erythema multiforme with prominent lymphoid cell infiltrate
Note: early cutaneous lymphoma can have a interface-like pattern*

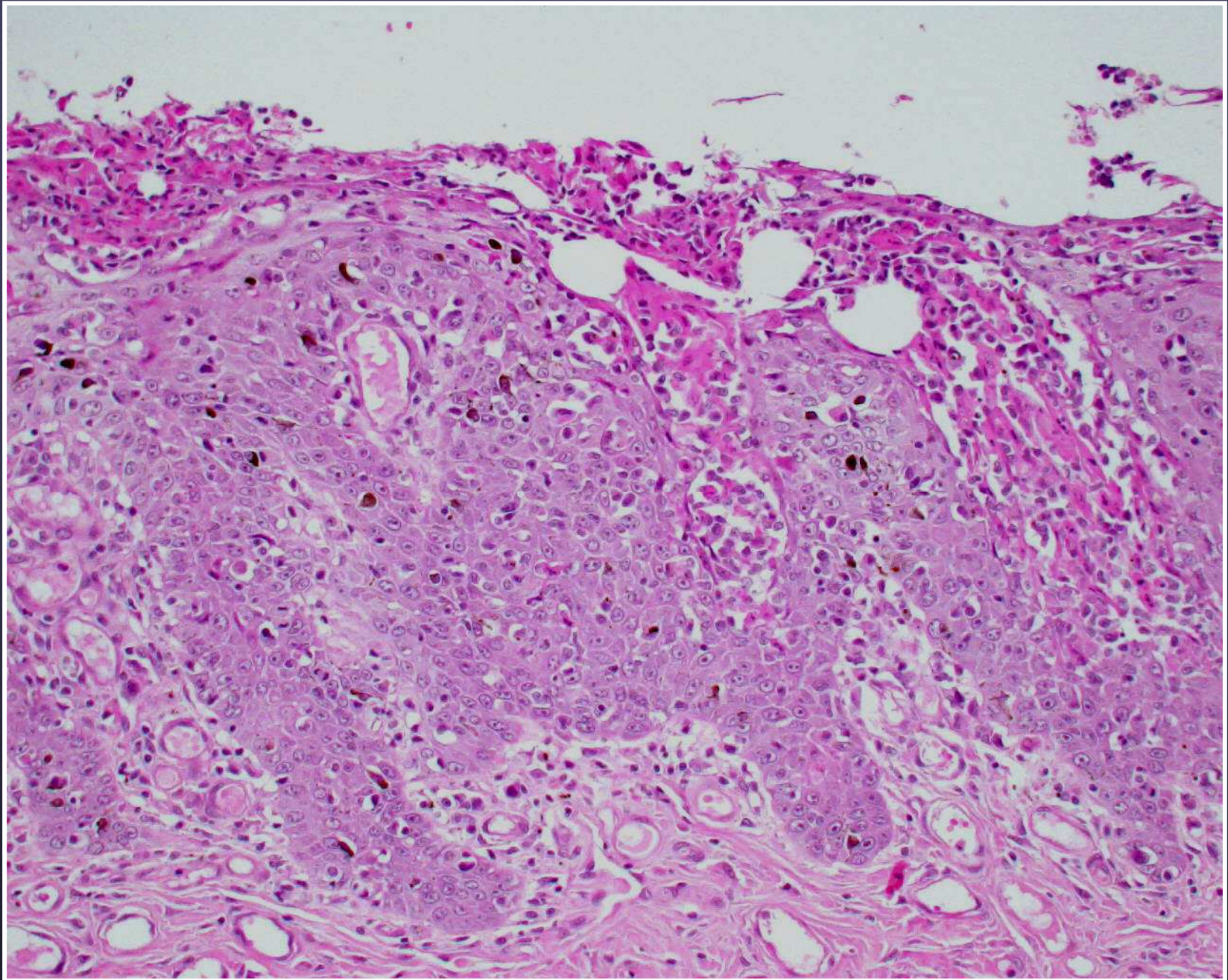


In your EM cases, look for giant cells in or just below necrotic epidermis-foreign body rxn to free keratin

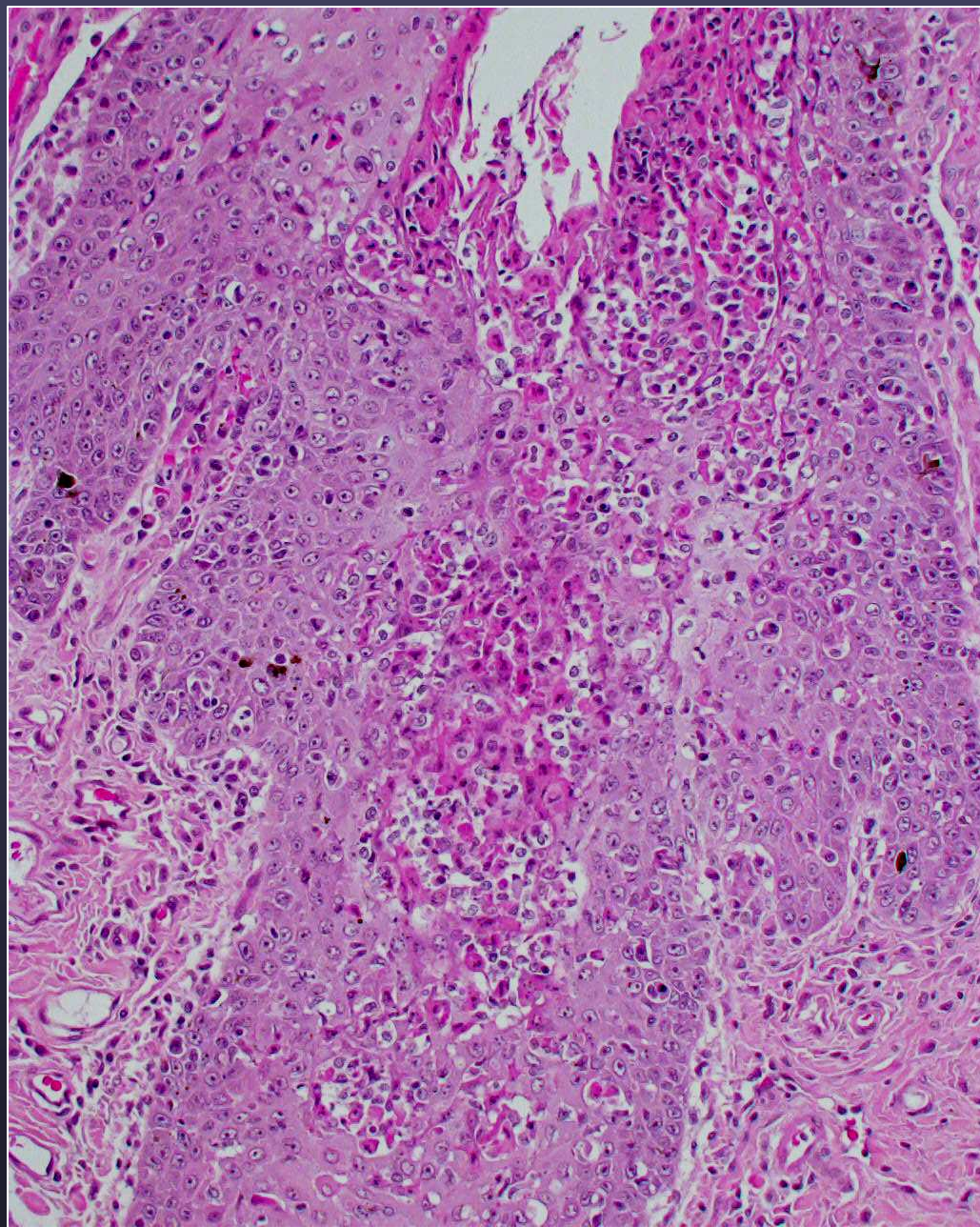


Dec 2002

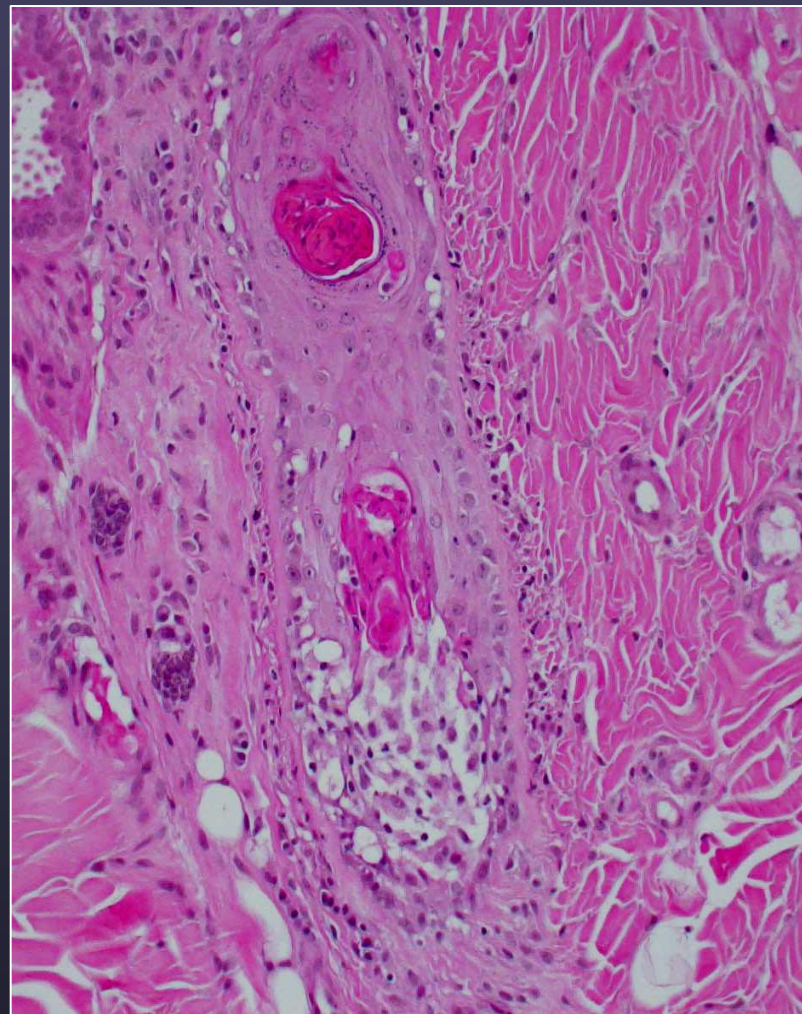
Over time, this case developed more florid individual keratinocyte necrosis



Erythema multiforme



Dec 2002



Sept 2002



VHUP DERMATOLOGY

6.5 yr old, M, Labr

April 2001