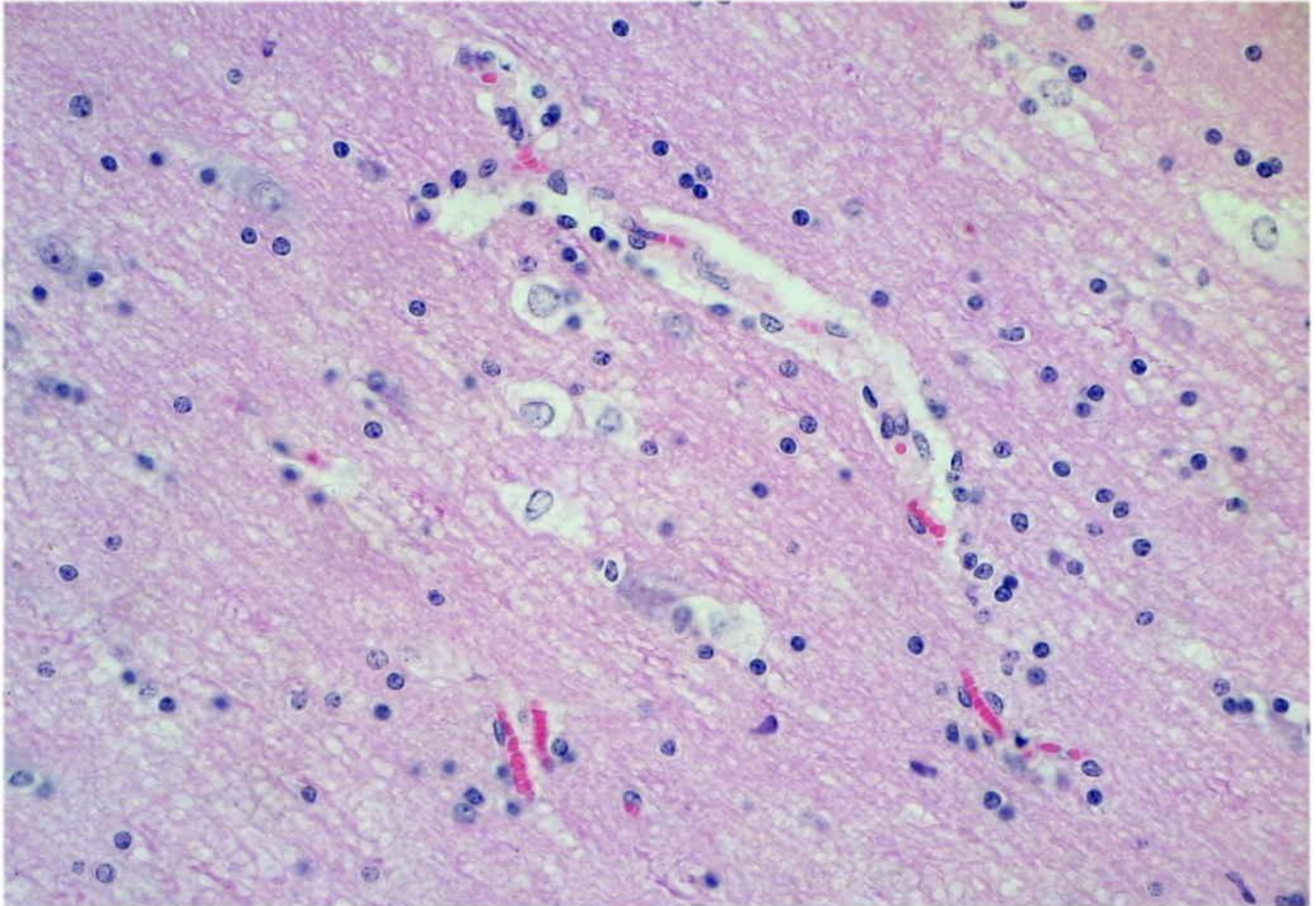


History:

H&E section (40x objective) of a transverse slice of white matter from a mid-cerebral gyrus of a mature standard-bred horse. The animal had developed non-localising nervous signs while on pasture dominated by *Echium plantagineum*.

Describe the abnormalities, make a histopathological diagnosis, and comment on the pathogenesis of the changes.



Describe the significant changes

Make a histological diagnosis

Suggest the cause and pathogenesis