

ASVP DIAGNOSTIC EXERCISE NO. 33

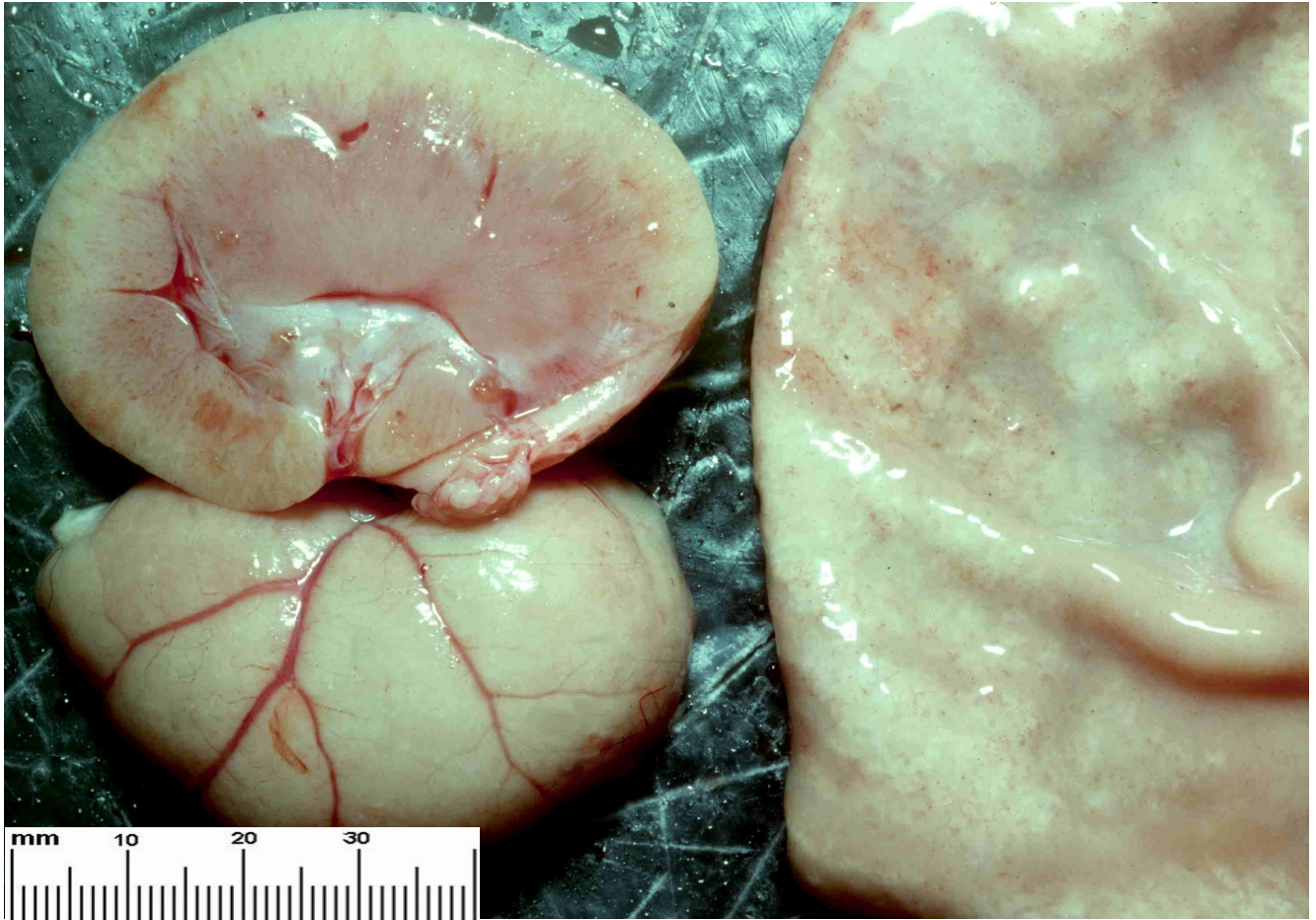
Roger Kelly
University of Qld
Case No. 84-1770

History:

Necropsy specimens from a 9-year-old cat that died after several months of steadily worsening polydipsia/polyuria, inappetance and general misery.

Its BUN on admission was 70; creatinine 1183 and PCV 20%. The BUN and creatinine levels fell significantly during 6 days of fluid therapy (BUN 42; creatinine 420) but the unappreciative creature died (it had cardiac disease as well).

The specimen on the right is the stomach (opened).



1. Describe the abnormalities.
2. Explain the changes by referring to the underlying disease processes.

As with previous exercises, I will circulate a description and discussion of this case in a couple of weeks, via the Members login pages of the ASVP website <http://www.asvp.asn.au/>

Please advise me at roger-kelly@aapt.net.au if you have any discussion about this case.