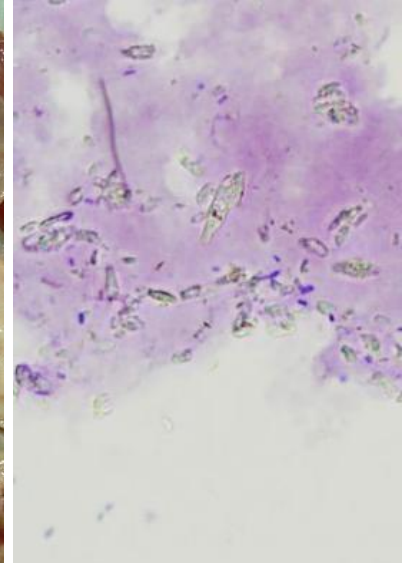
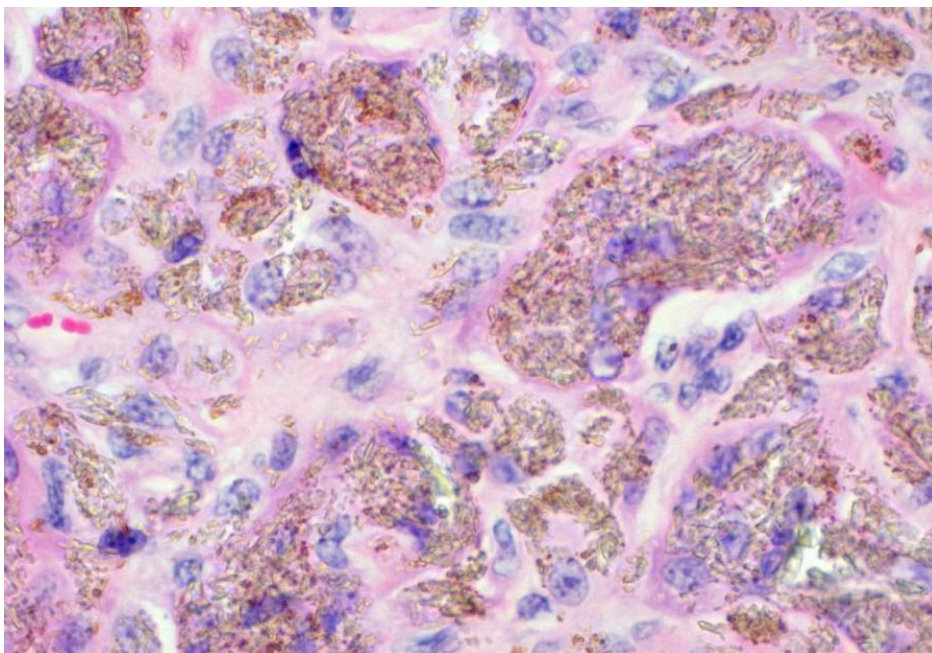


History:

Blemishes found at slaughter of many old ewes from pasture on a property on the NSW Northern Tablelands. The deposits were widely distributed over peritoneal surfaces and in fascial planes of the diaphragm (peritoneal side) and body wall. Sheep had been injected with cydectin, 5-in-1, and injectable selenium. The problem seems to have developed since last autumn (not noticed in sheep sent to the abattoir at that time). Two mobs of sheep from this property (in March and May) were similarly affected; this one worse (90% affected).



cytology ↑



1. Description
2. Morphological diagnosis
3. Most likely cause
4. Suggest steps for further management of the case

(this page can be enlarged to 200x for greater detail)

As with previous exercises, I will circulate a description and discussion of this case in a couple of weeks, via the Members login pages of the ASVP website <http://www.asvp.asn.au/>

Please advise me at roger-kelly@aapt.net.au if you have any discussion about this case.

Roger Kelly

If anyone wishes to provide a diagnostic case, please contact me if you need advice about image requirements.