

1. Describe the abnormalities.
2. What basic disease processes might be present?
3. Pathological diagnosis (give other possibilities in order of preference)?
4. Suggest possible cause/s.

Description:

The affected skin shows alopecia, erosions and encrustations and is markedly thickened with weeping areas. Skin antero-ventral to the eyes is hyperpigmented and ulcerated.

Basic disease process/es:

The gross lesions are consistent with local chronic inflammation associated with cutaneous ulceration.

Pathological diagnosis:

Chronic erosive and ulcerative dermatitis

Possible cause/s:

The condition was initially presumed to be fungal in aetiology (eg phycomycosis). Mange mites were also considered as a possible cause. Skin scrapings were negative for mites, and fungal cultures were negative. Skin biopsies from affected areas in several animals showed generalised parakeratosis and dyskeratosis, with erosion of superficial epidermis, thickening due to edema along with moderate infiltration with eosinophils. Clusters of ensheathed L1 filariid worms were noted in most sections, while the deeper subcutis contained adult worms. Worms were extracted and were identified as *Stephanofilaria* spp. reported to be endemic in Northern Luzon area (Tongson, M. S.; Gegato, J. and Canillas, J (1981). *Cutaneous Parasitic Nodules Of Cattles And Carabaos In The Philippines. Philippine Journal Of Veterinary Medicine Vol 20:38-49*)

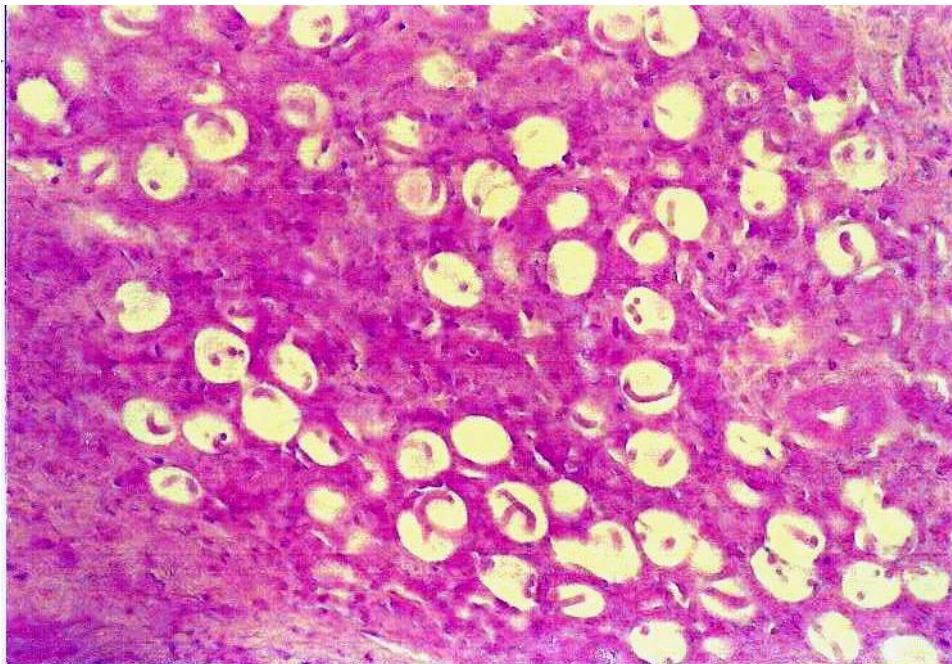


Figure 1.