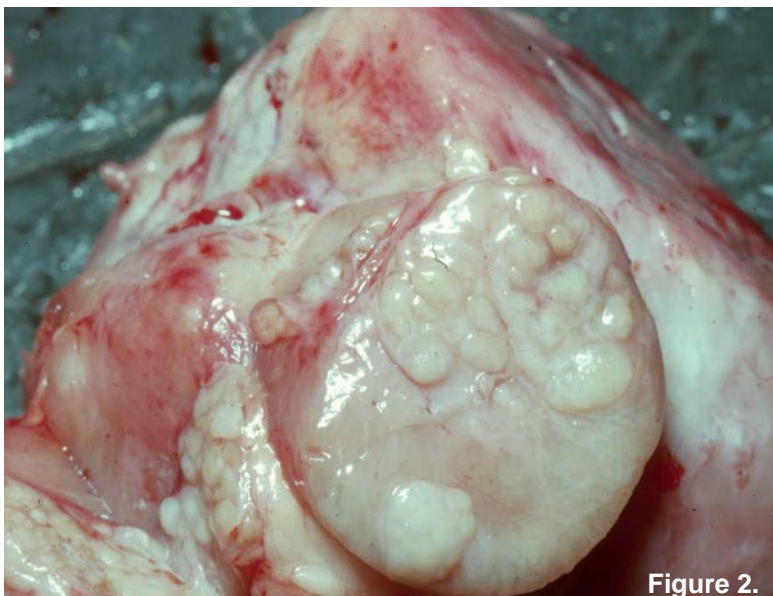


**History:**

A 7 year-old Thoroughbred stallion was castrated in the field, apparently without complications, but was represented a month or so later with signs of scirrhus cord. A mass “like a 3<sup>rd</sup> testicle” was removed from the surgical site (figure 1), together with an enlarged inguinal lymph node (sectioned; figure 2). There was also a mass palpable *per rectum* in the left posterior abdominal quadrant.



*(this page can be enlarged to 200% for closer views of this specimen)*



1. Describe the abnormalities.
2. What basic disease processes might be present?
3. Pathological diagnosis (give other possibilities in order of preference)?
4. Suggest possible cause/s.

As with previous exercises, I will send out a description and discussion of this case in a couple of weeks, and it will eventually be archived on the Members login pages of the ASVP website [www.asvp.asn.au](http://www.asvp.asn.au)

Please advise me [rkelly9@optusnet.com.au](mailto:rkelly9@optusnet.com.au) if you have any problem opening this case.

*If anyone wishes to provide a diagnostic case, please contact me if you need advice about image requirements.*