

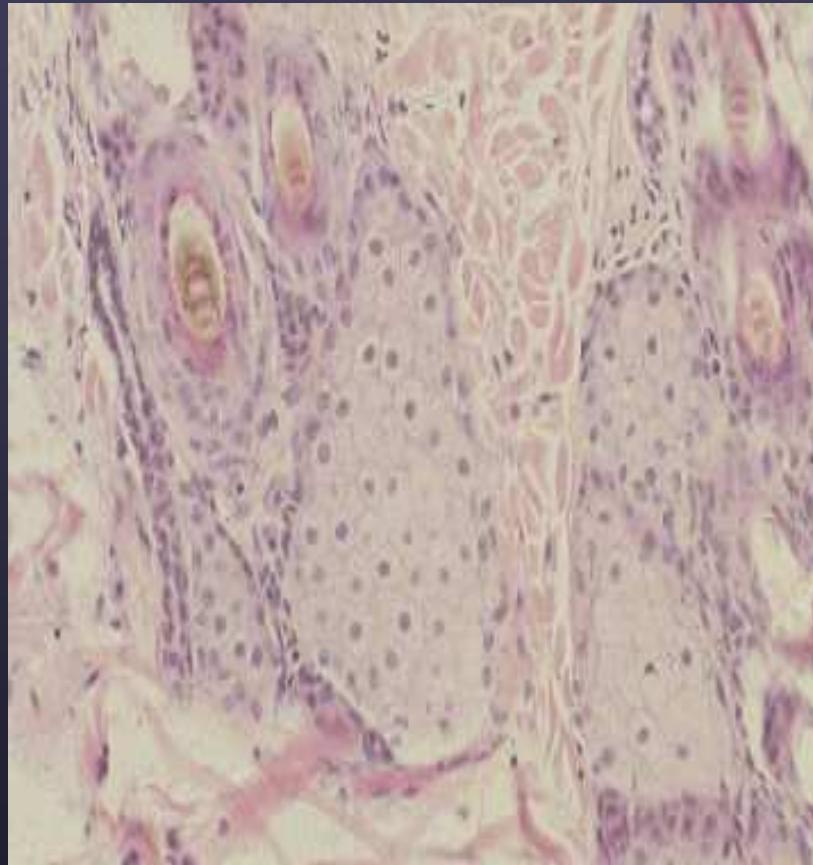


- ▶ Folliculitis in short-coated breed dog

Sebaceous glands

- Holocrine glands open into the hair follicle
- Sebocytes degenerate to form sebum
- Provides moisture for stratum corneum, water repellent
- Antibacterial activity, pheromone production
- Example: Sebaceous adenitis

Sebaceous Glands



Feline

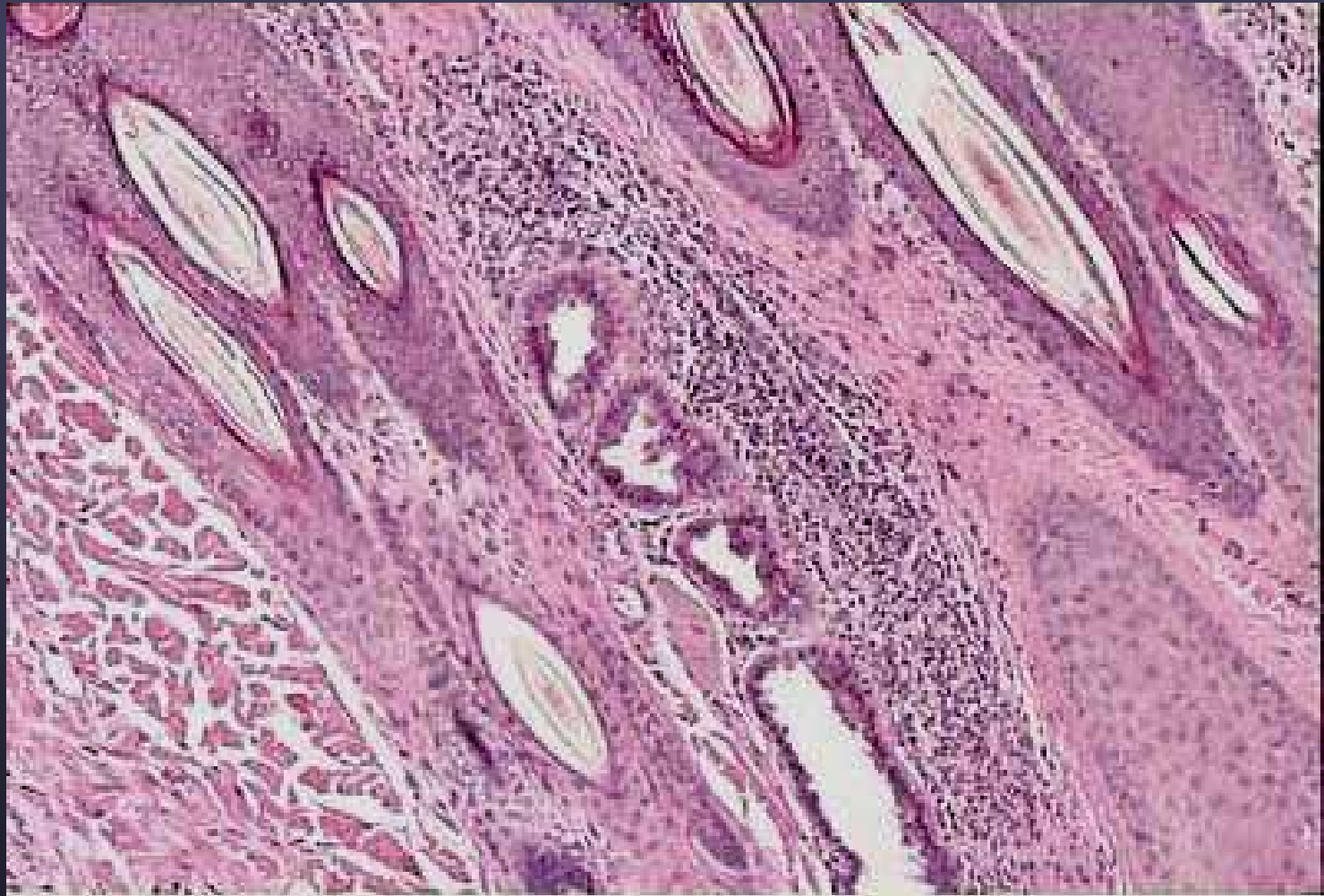
2 year old, FS, Standard Poodle



▶ Sebaceous adenitis



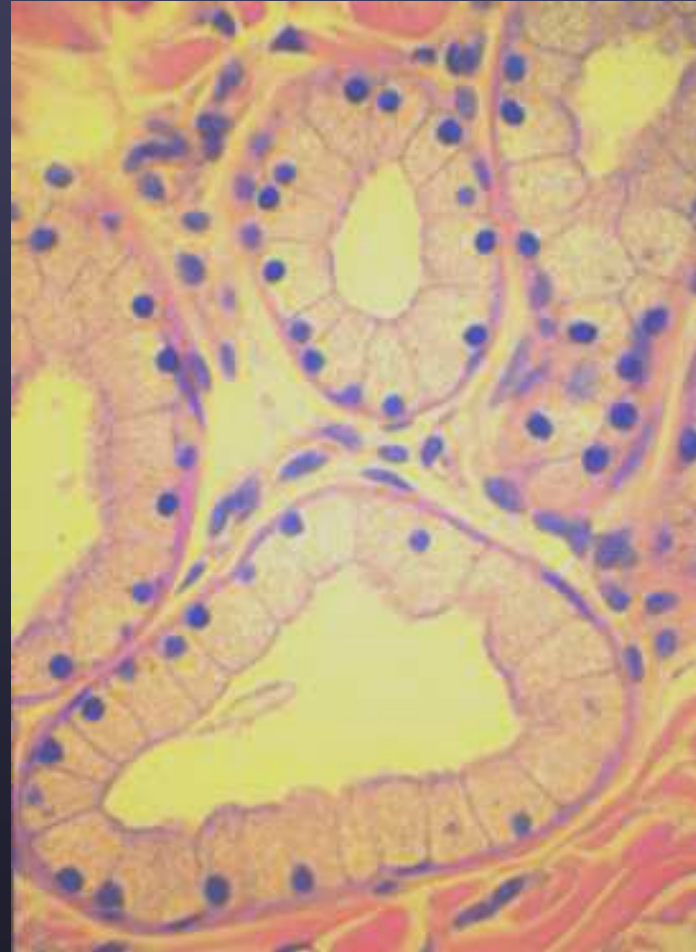
▶ Follicular casts



▶ Sebaceous adenitis

Sweat Glands

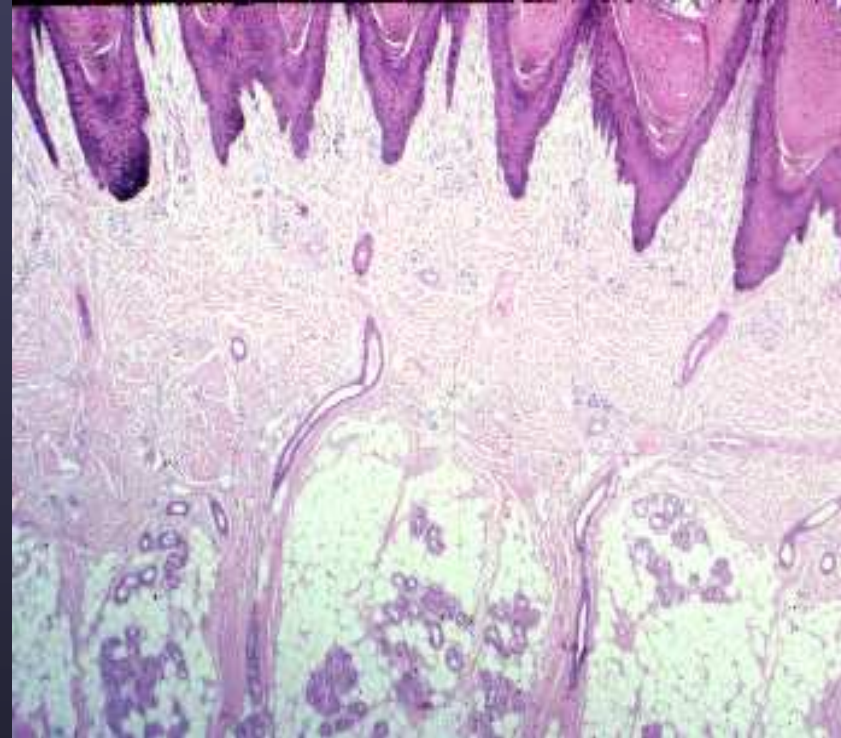
- Apocrine glands (epitrichial)
 - empty into hair follicle.



▶ equine

Apocrine Glands

- Eccrine glands (atrichial)
 - present in foot pads
 - empty directly onto surface of skin.



Subcutis

- Between the dermis and skeletal muscle
- Adipose tissue (panniculus) and loose connective tissue.
- Metabolic storage pool
- Protects deeper structure
- Inflammation of panniculus = panniculitis

Cutaneous Vasculature

- No direct blood flow
- Superficial plexus
- Middle plexus
- Deep plexus



Joshua tree at night