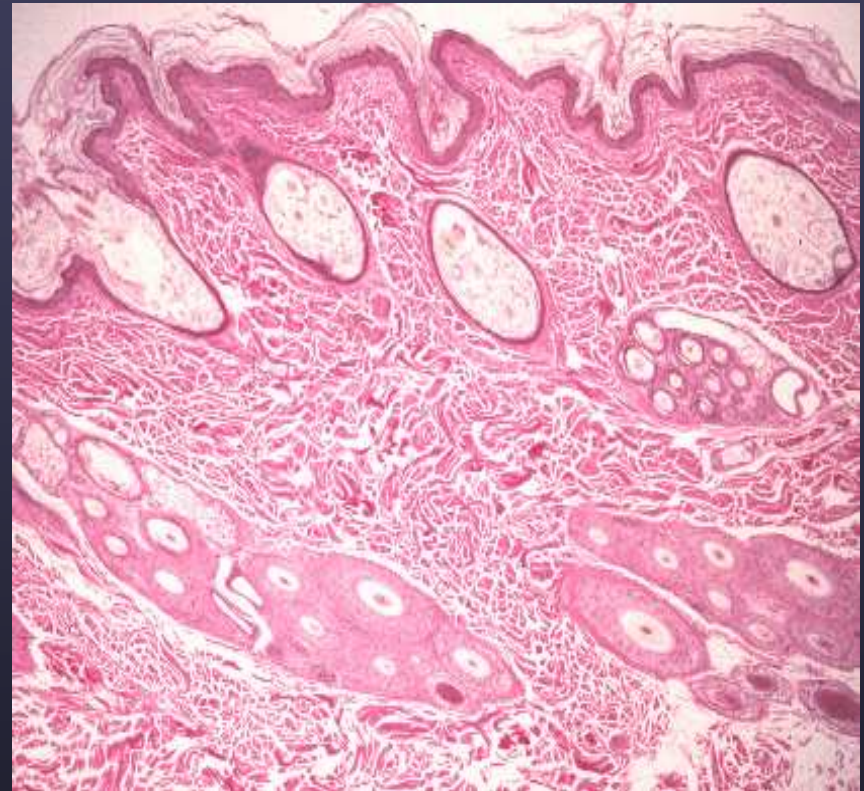


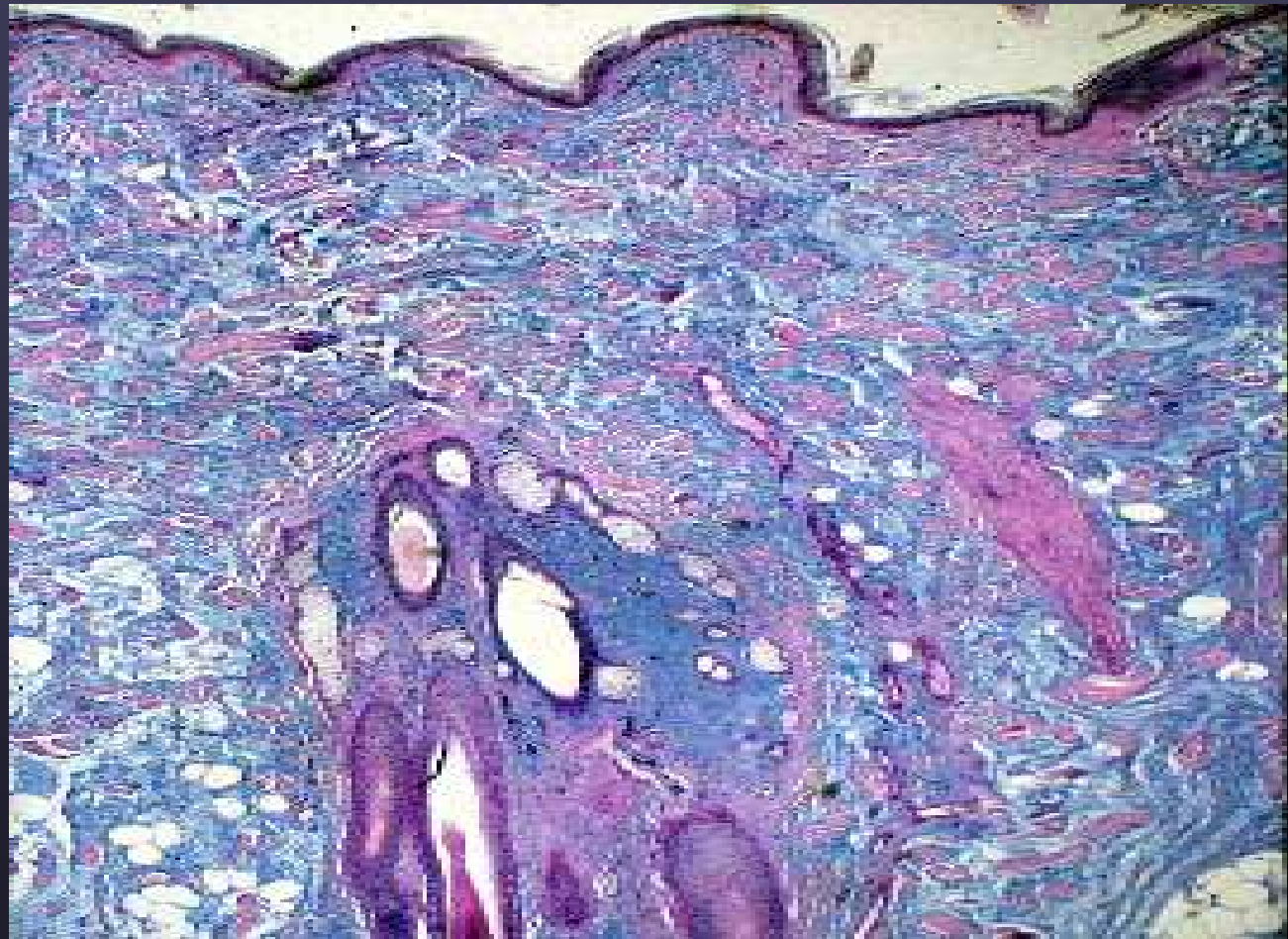
# Dermis: Superficial and Deep

- Collagen, elastin, proteoglycans.
- perivascular dendritic cells, lymphocytes, mast cells
- Tensile strength
- Supports blood vessels, lymphatics, nerves





# Dermis of a Shar Pei Dog



► Dermal mucin- Alcian blue stain





► Cutaneous mucinosis





► Cutaneous asthenia

# Hypovitaminosis C (Scurvy)

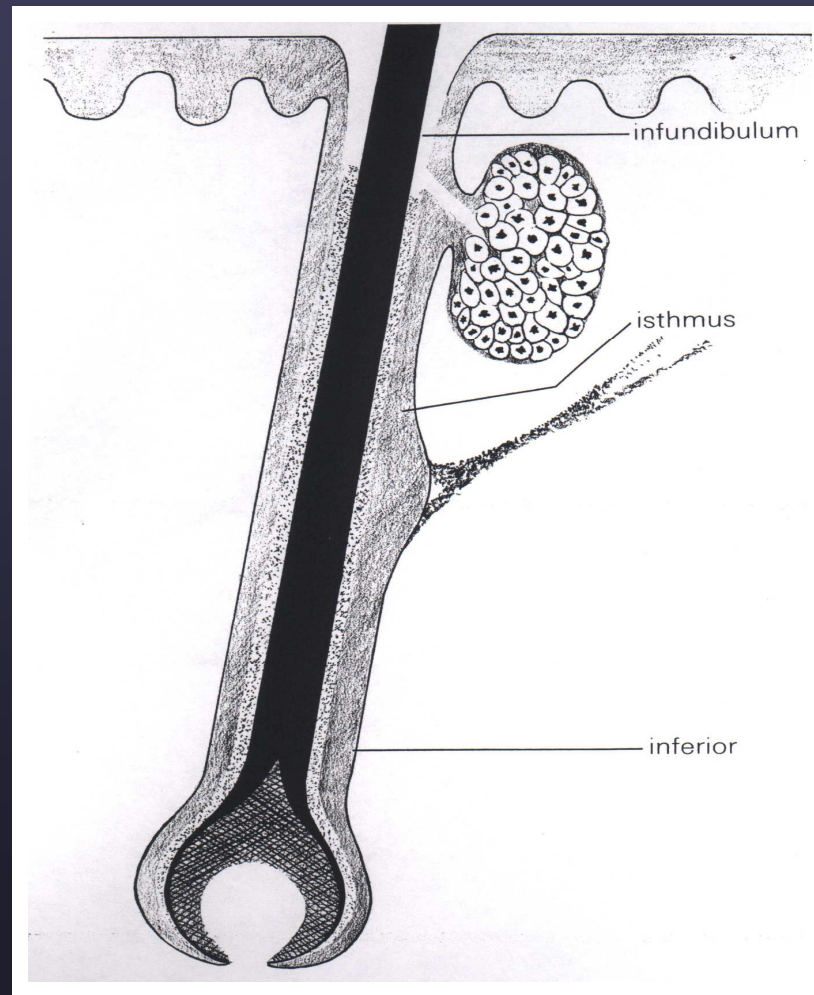




# Hair Follicles

- Physical and photoprotective barrier
- Visual stimulus for sexual attraction
- Thermoregulation
- Sensory perception
- Wound healing

# Hair Follicle Structure

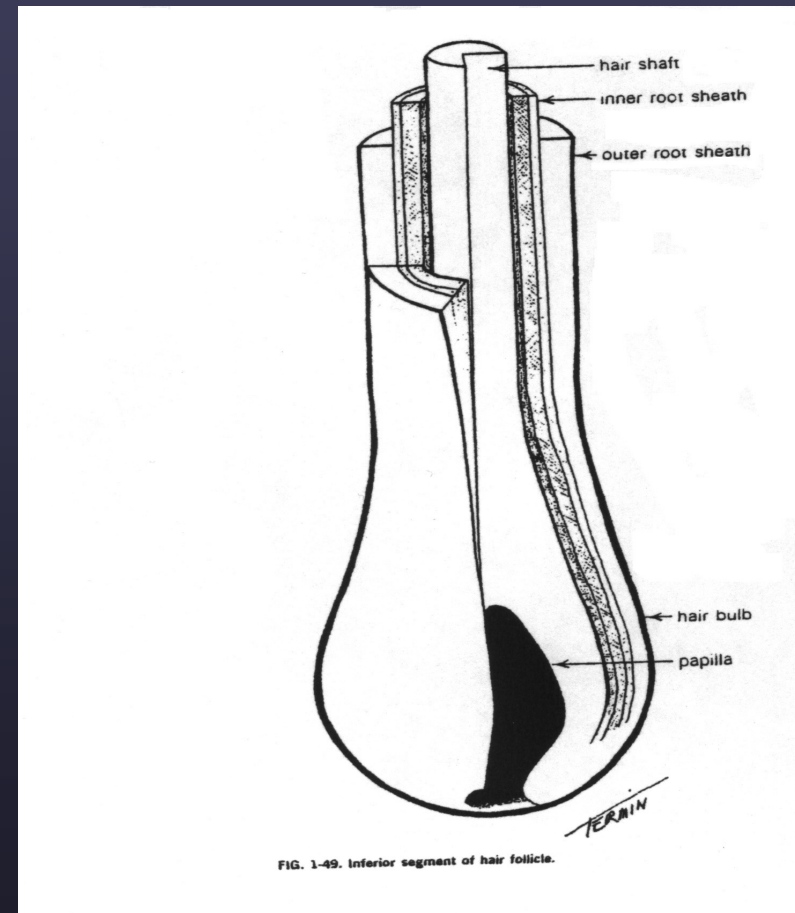


- ▶ Ackerman's Histologic Diagnosis of Inflammatory skin diseases, 1978



# Structure of Hair

- Outer root sheath continuous with epidermis.
- Outer root sheath surrounds an inner tube (inner root sheath).
- These two tubes surround the hair shaft.
- Hair bulb: base of follicle



► Ackerman's Histologic Diagnosis of Inflammatory skin diseases, 1978

## Chapter 1 Structure and function of the skin

**1.8**

The hair follicle and its associated structures. © Anita Patel.

