

Few dogs may have concurrent footpad hyperkeratosis

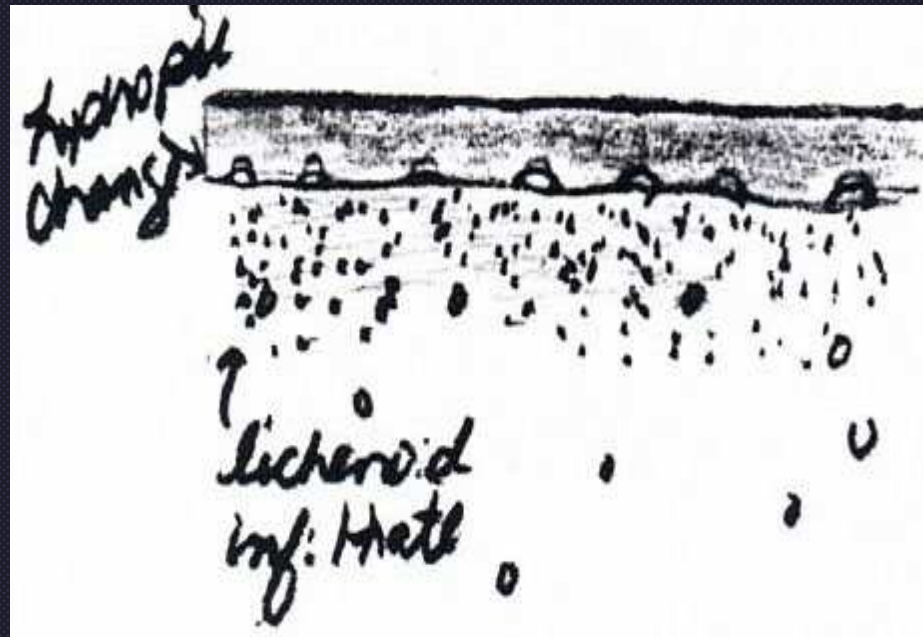


Beautiful (not- pesty!) prickly pear cactus flower in Utah

Pattern Diagnosis: Part II

E Mauldin
University of Pennsylvania
School of Veterinary Medicine

Interface Dermatitis



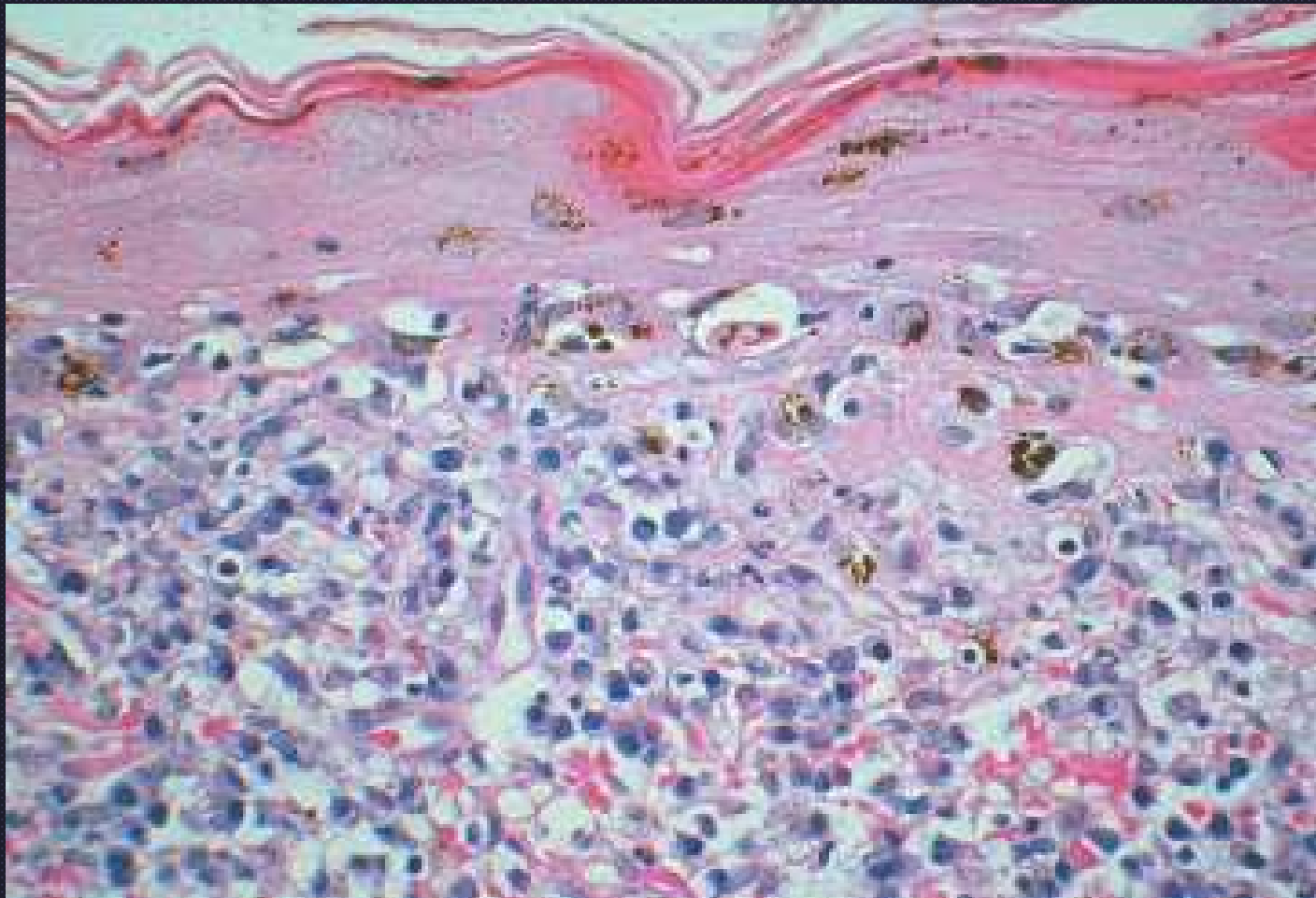
Interface Dermatitis

- Reaction pattern due to pathologic events which target **basal keratinocytes and dermoepidermal junction**
- Variety of Mechanisms??
 - Immune complex deposition
 - Type II hypersensitivity reaction
 - Autoreactive cytotoxic T cells

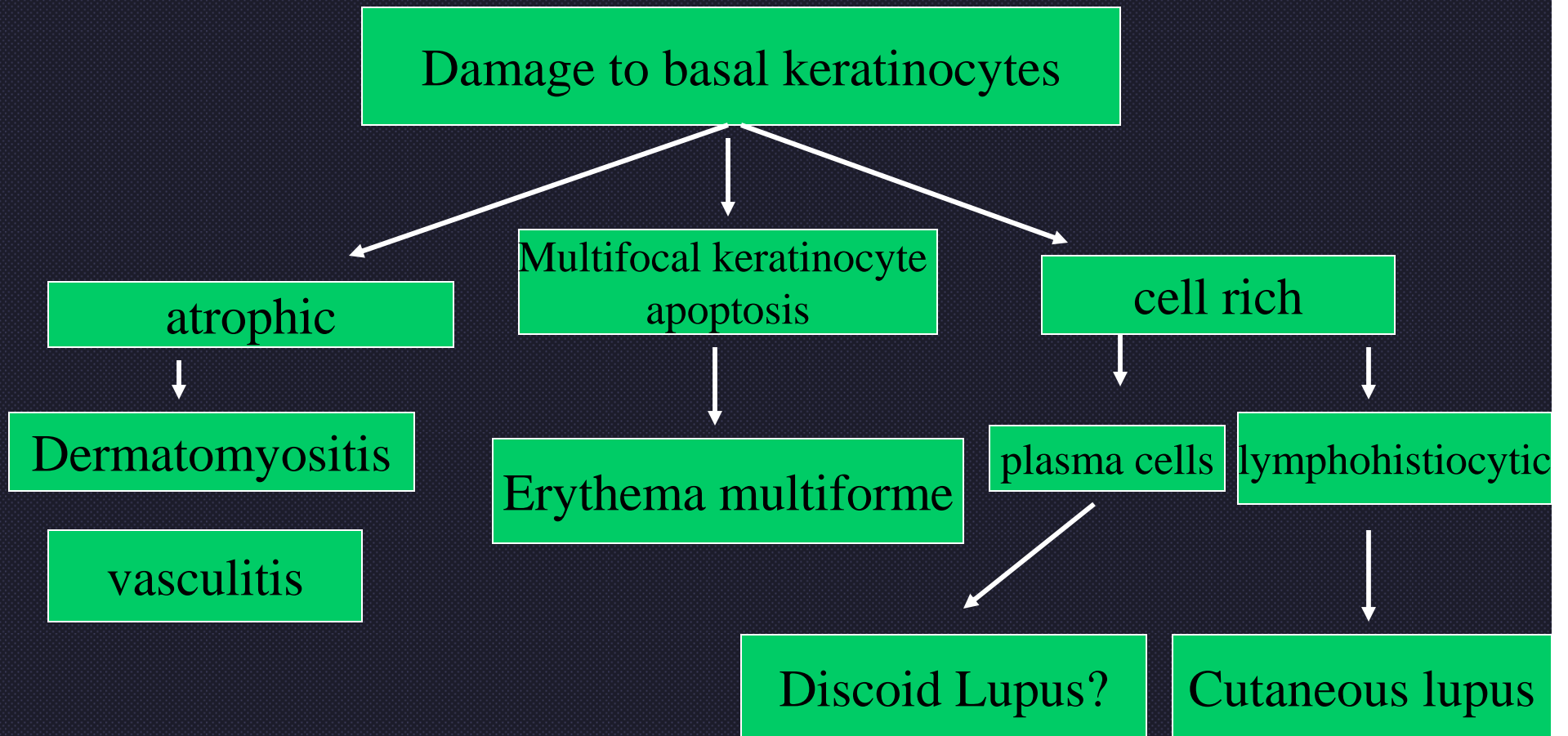
Cat vs Dog

- Thymoma-associated dermatosis
 - Erythema multiforme
 - Mucinotic mural F/F?
 - GVH
 - Others
- Erythema multiforme
 - Dermatomyositis
 - Vaccine-associated ischemic dermatopathy
 - Cutaneous vesicular lupus of Collie and Sheltie
 - Exfoliative lupus of GSHP
 - VKH
 - Lichenoid dermatosis
 - Others

Interface Dermatitis



Interface dermatitis



Intraepidermal Pustular/Vesicular Dermatitis

Acantholytic cells



Definitions

- **Vesicle**- fluid filled cavity within or beneath the epidermis less than .5 cm diameter.
- **Bulla**- a vesicle greater than .5 cm dia.
- **Pustule**- a vesicle or bulla with purulent rather than clear liquid content.

Definitions

- **Acantholysis** (*loosening of the spines Gk.*) is the loss of cohesion between epidermal cells or keratinocytes. This loss of cohesion results in the formation of clefts, vesicles and bullae.
- **Acantholytic cells**- keratinocytes which separate completely from their neighbors, become round, with a round nucleus and eosinophilic cytoplasm
- Do not confuse with **ACANTHOSIS!!**
- Use “acantholytic cell” or “acantholytic keratinocyte”