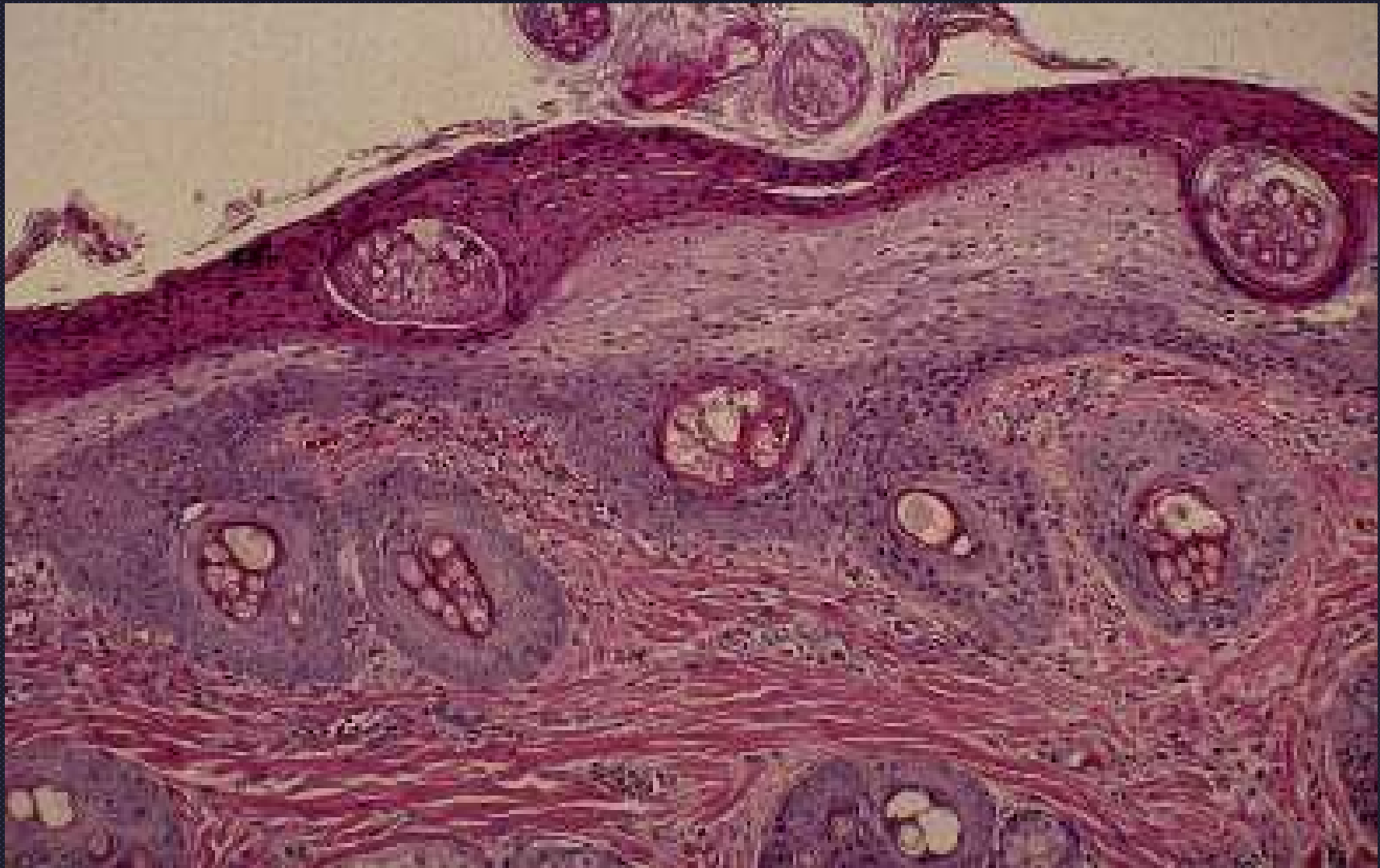


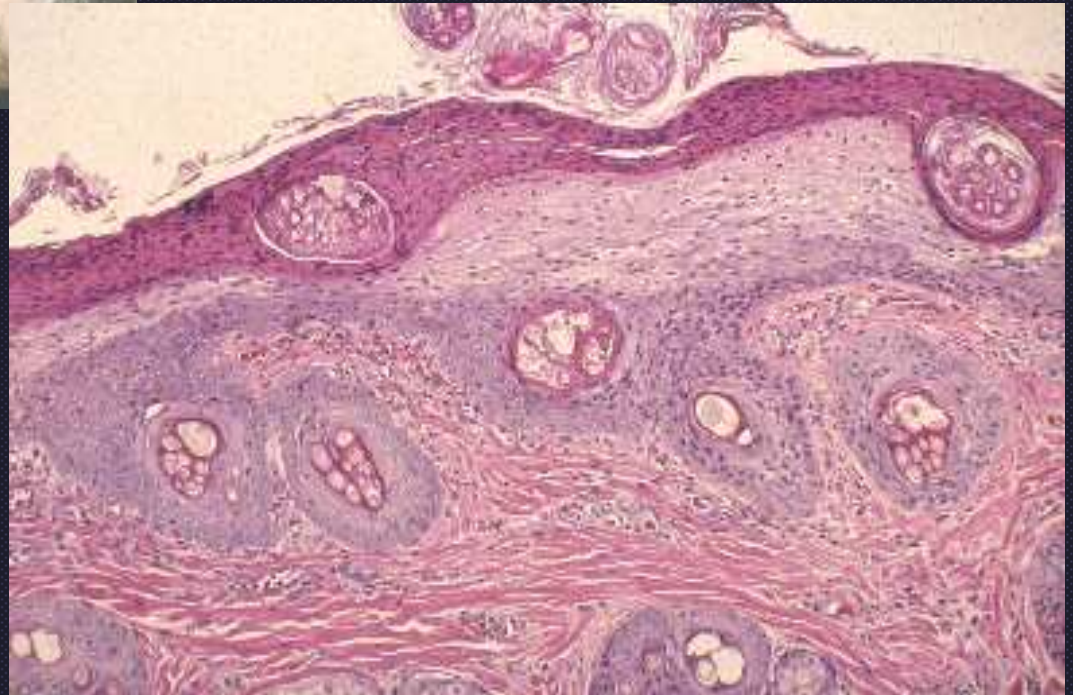
Superficial necrolytic dermatitis due to hepatocutaneous syndrome
“red, white and blue”



Superficial necrolytic dermatitis due to hepatocutaneous syndrome
“red, white and blue”



Superficial necrolytic dermatitis
hepatocutaneous syndrome
"red, white and blue"



Nomenclature

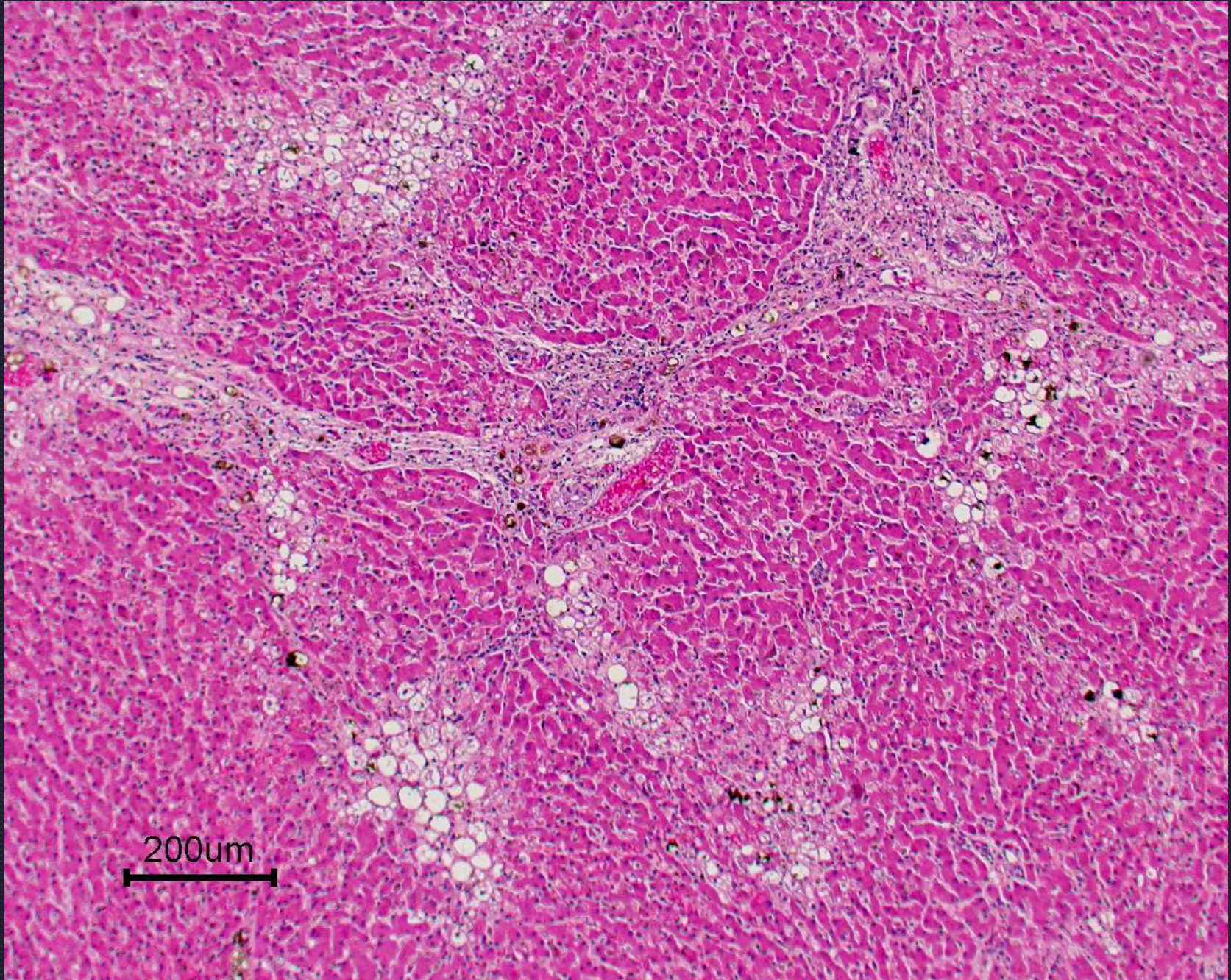
- Superficial Necrolytic Dermatitis- SND
aka Necrolytic migratory erythema-NME
aka Metabolic epidermal necrosis-MEN
- Is caused by either:
 - Hepatocutaneous syndrome
 - Glucagonoma syndrome

WSAVA Liver Standardization Group

- *Specific hepatopathy*
- Macronodular cirrhosis
- Regenerative hyperplastic nodules divided by bands of fibrous connective tissue (+/- duct hyperplasia)
- Minimal to mild inflammation
- Ballooned hepatocytes similar to steroid hepatopathy



Hepatocutaneous syndrome



hepatocutaneous syndrome

