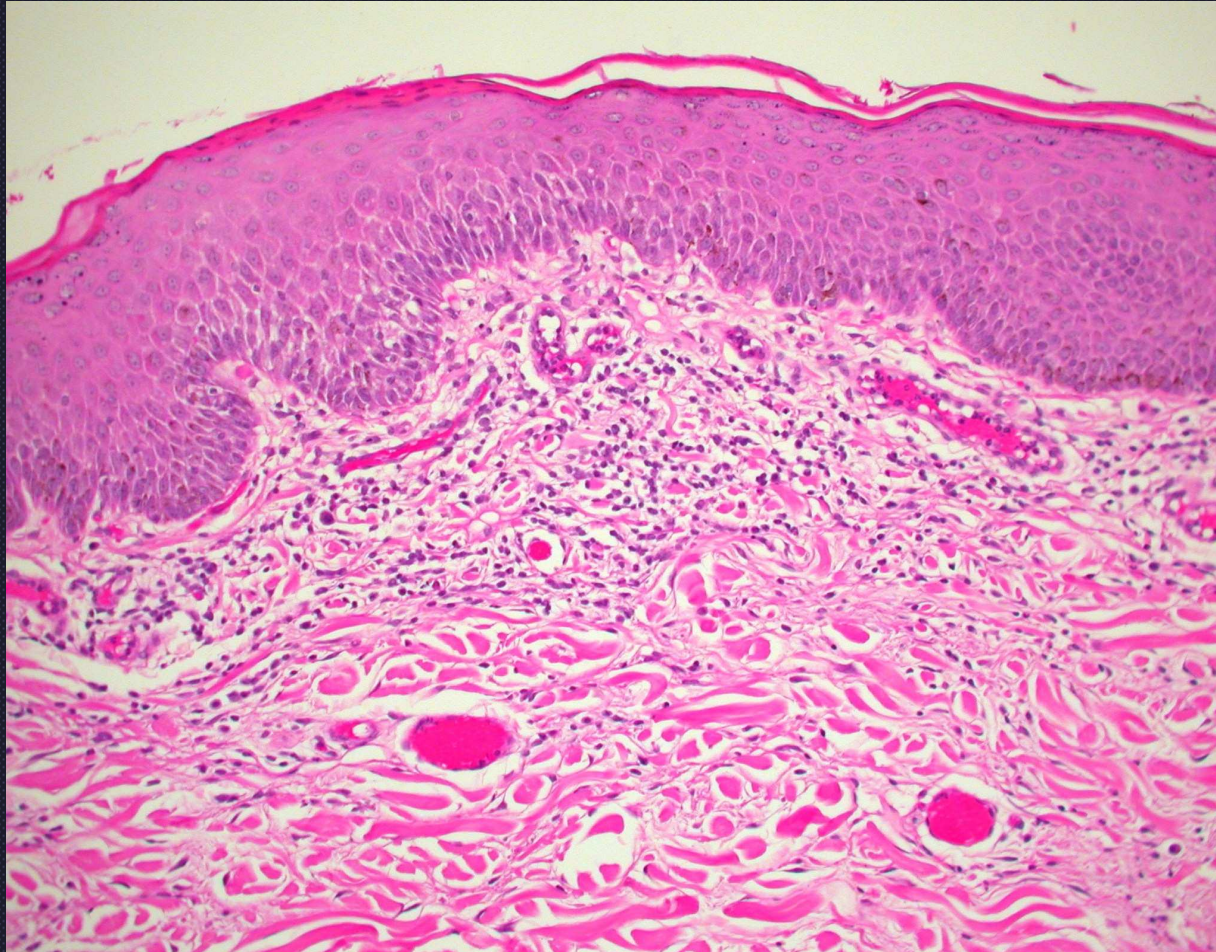


Perivascular Dermatitis



Allergic Dermatitis



Secondary complicating factors

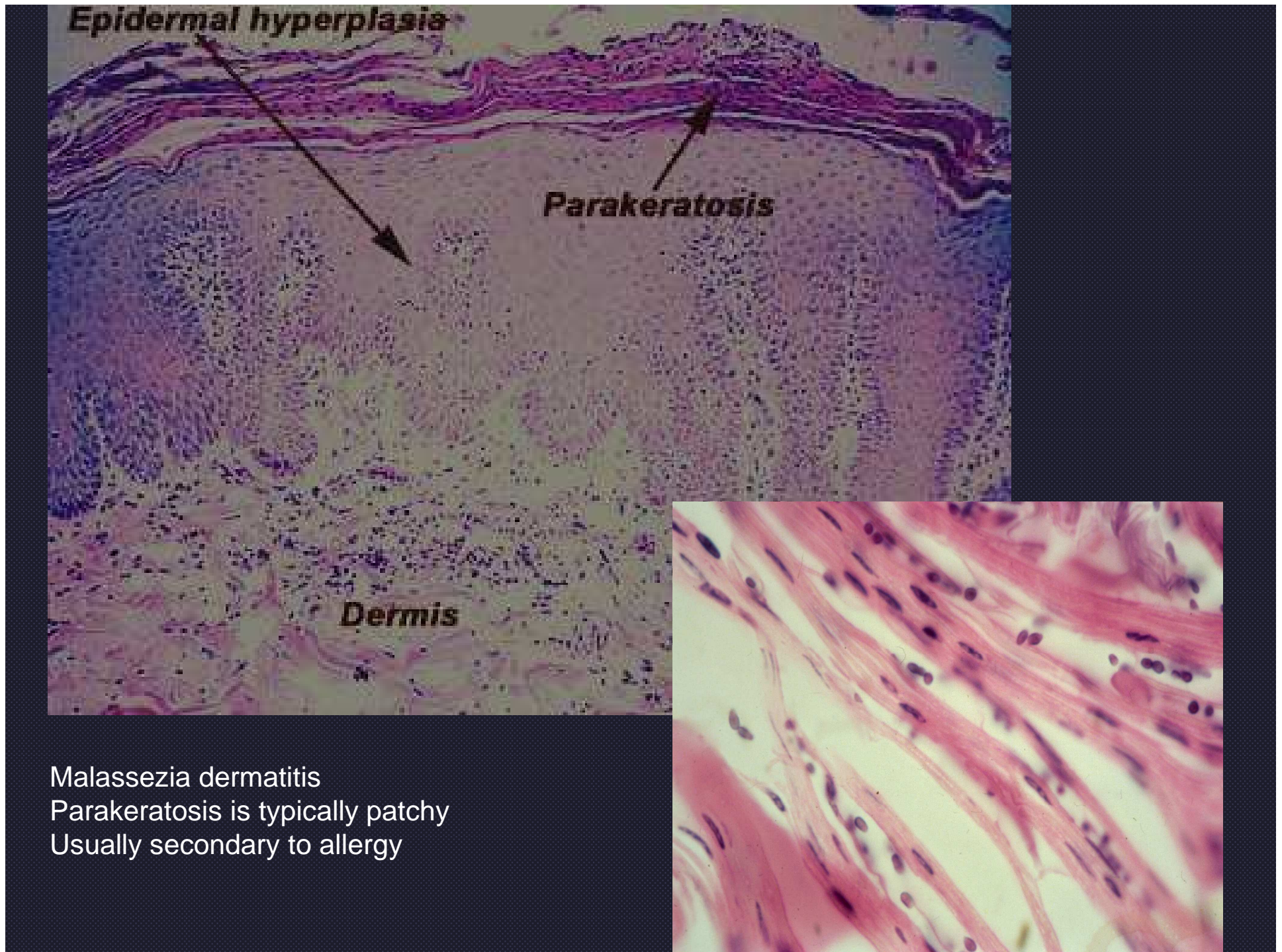
- Superficial trauma
- Bacterial
- Fungal



“Armadillo Westie”
chronic hypersensitivity to malassezia + environmental
+/- food allergens



Lichenification with malassezia dermatitis



Malassezia dermatitis
Parakeratosis is typically patchy
Usually secondary to allergy