

History

Sydney rock oysters (SROs), (*Saccostrea glomerata*) grown in Pimpama river, Qld sourced from Rainbow Reach estuary, Macleay river, NSW, on 10.5.2006. Signs of disease and no growth noted in August 2006 affecting approximately 50% of batch.

Question 1

Which is the normal oyster ? Why ?



Figure 1. *Saccostrea glomerata* – Sydney rock oyster.

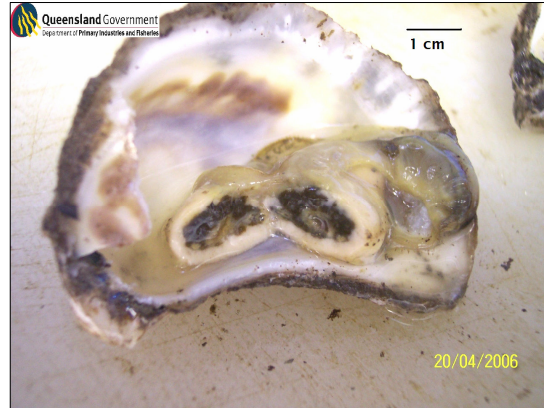


Figure 2. *Saccostrea glomerata* – Sydney rock oyster.

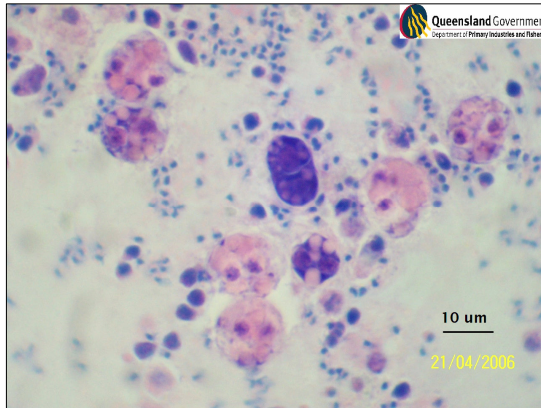


Figure 3. Giemsa stained impression smear of cut viscera.

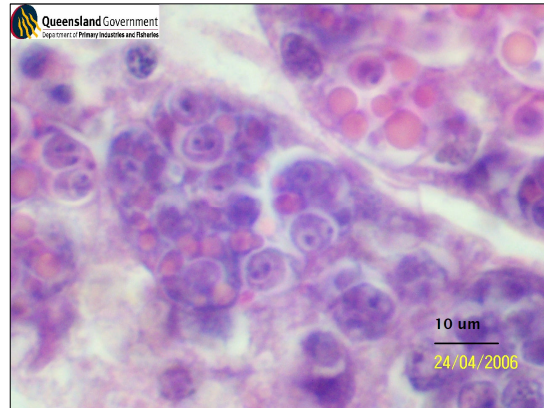


Figure 4. H&E of hepatopancreatic tubules.

Question 2

In Fig 3, are there 3 pathogens, 2 pathogens or 1 pathogen ? Explain.

Question 3

In Fig. 4, what has happened to the hepatopancreatic tubular epithelium ? How is this consistent with the changes in the gross pathology of the oyster ?