

PATHOLOGICAL EXAMINATION



Gross Pathological Features

- **Wattle and comb: petechiae, cyanosis**
- **Subcutaneous tissues of feet : petechiae**
- **Thigh & chest muscle: haemorrhages**
- **Trachea: hyperaemia**
- **Proventriculus: oedema**

- **Epicardium & myocardium: petechiae**
- **Lung: congestion, haemorrhages**
- **Liver: very fragile, necrosis, haemorrhages**
- **Spleen: swollen**
- **Ovary: haemorrhages, congestion, necrosis**



Cyanotic comb and wattle



3 MAR 2004

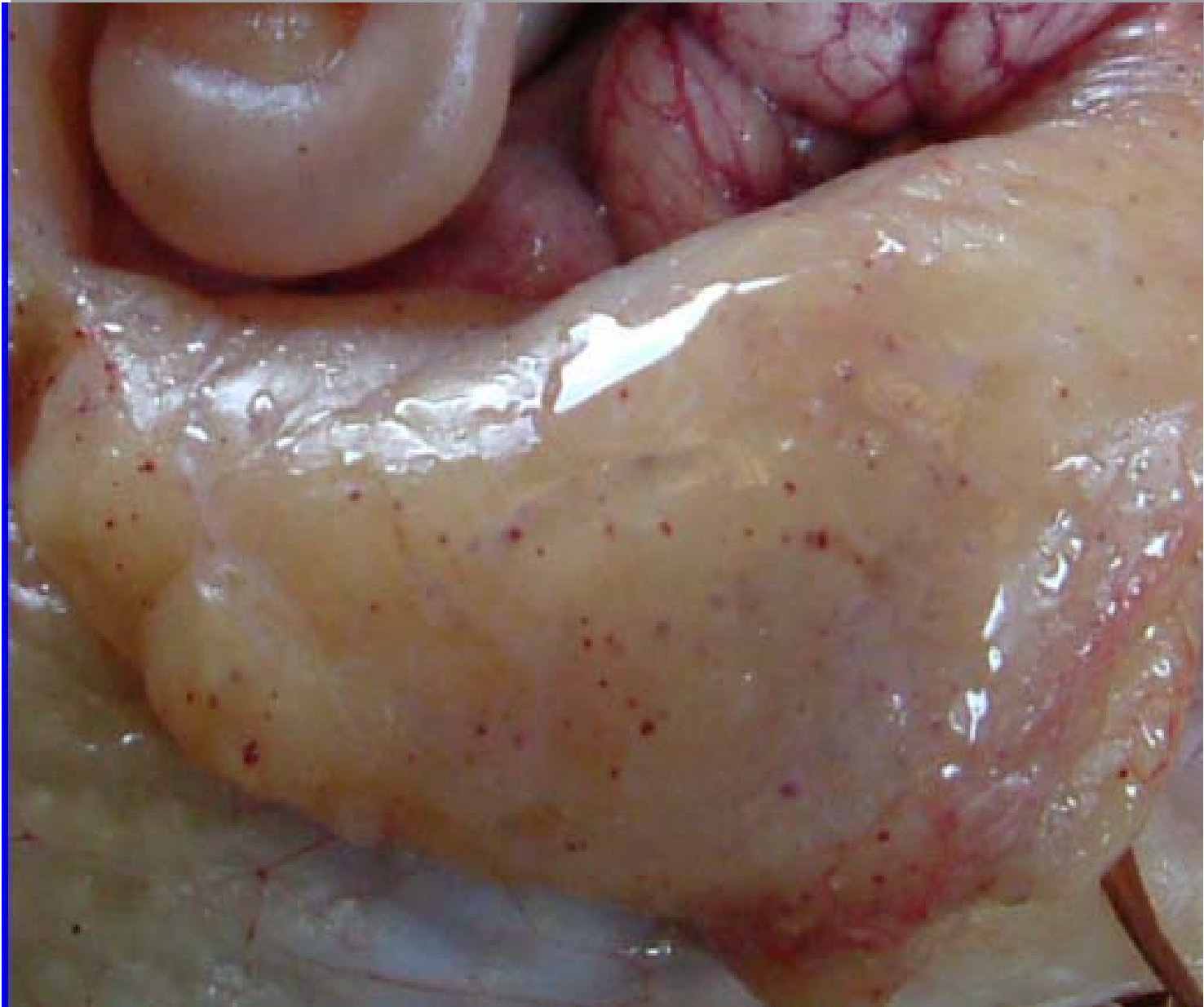


Subcutaneous haemorrhages in chest and feet



Subcutaneous haemorrhages in chest and feet





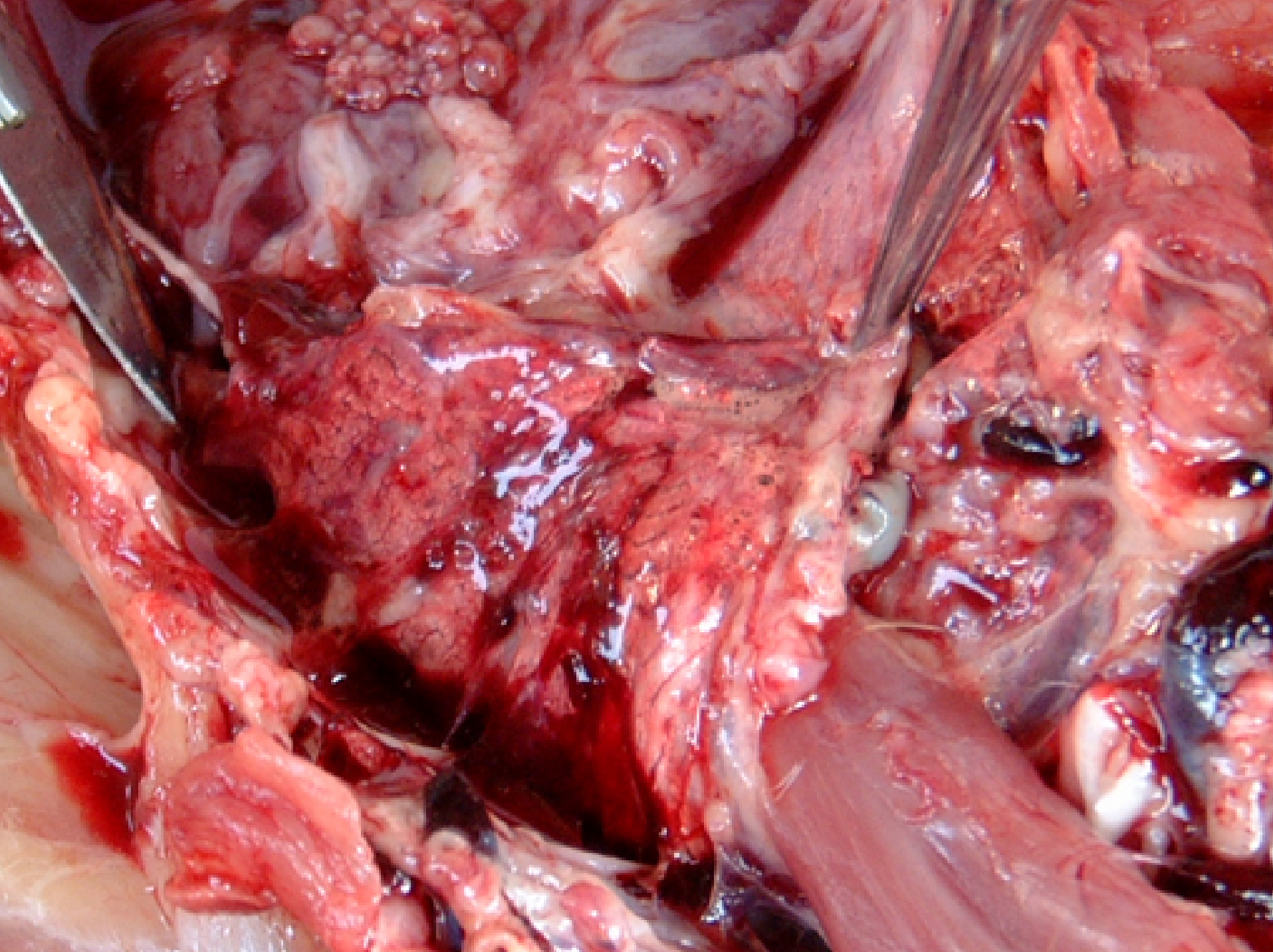
Petechiae in peritoneum



Petechiae in thigh muscle

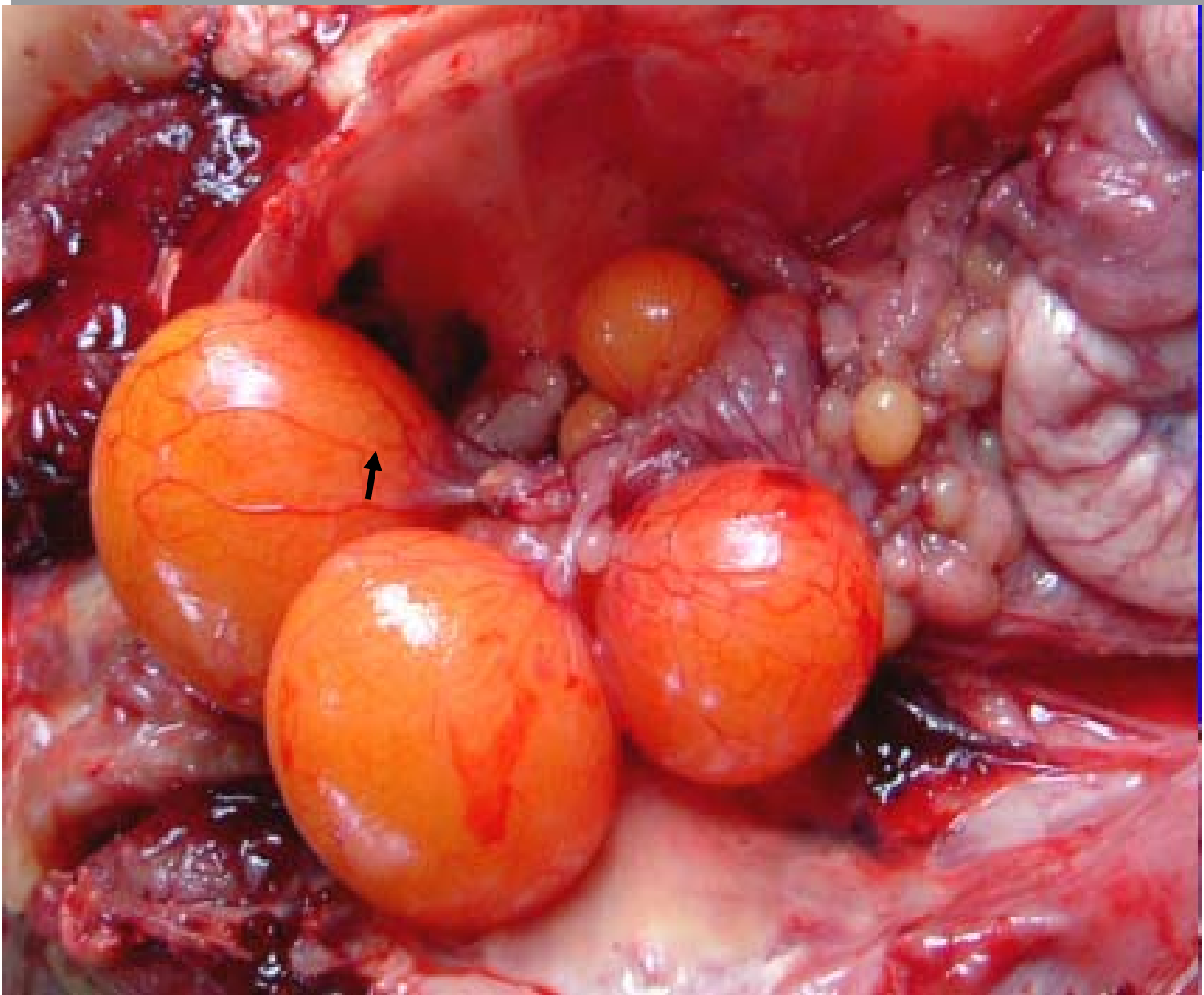


Hyperaemic upper tracheal mucosa

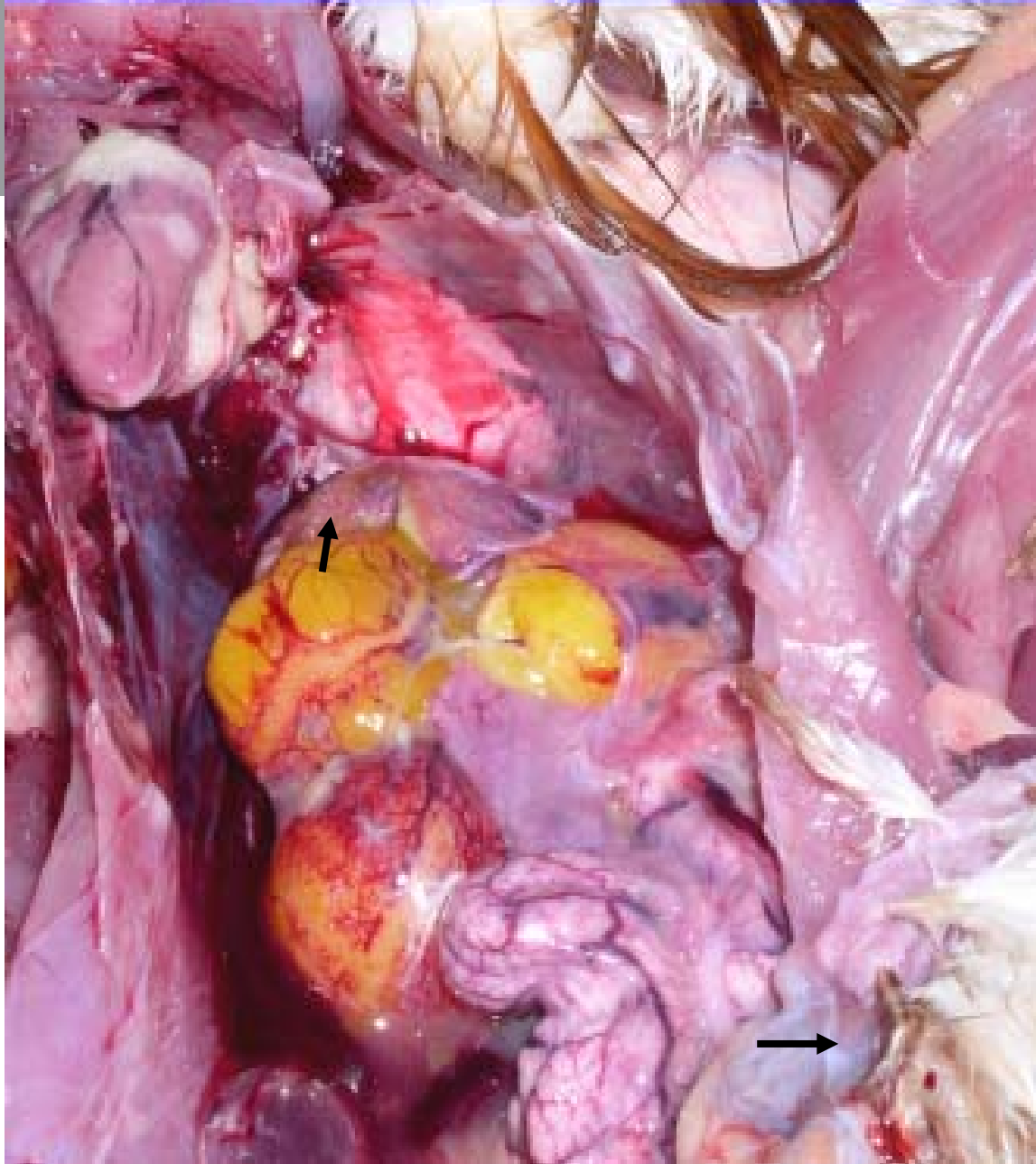




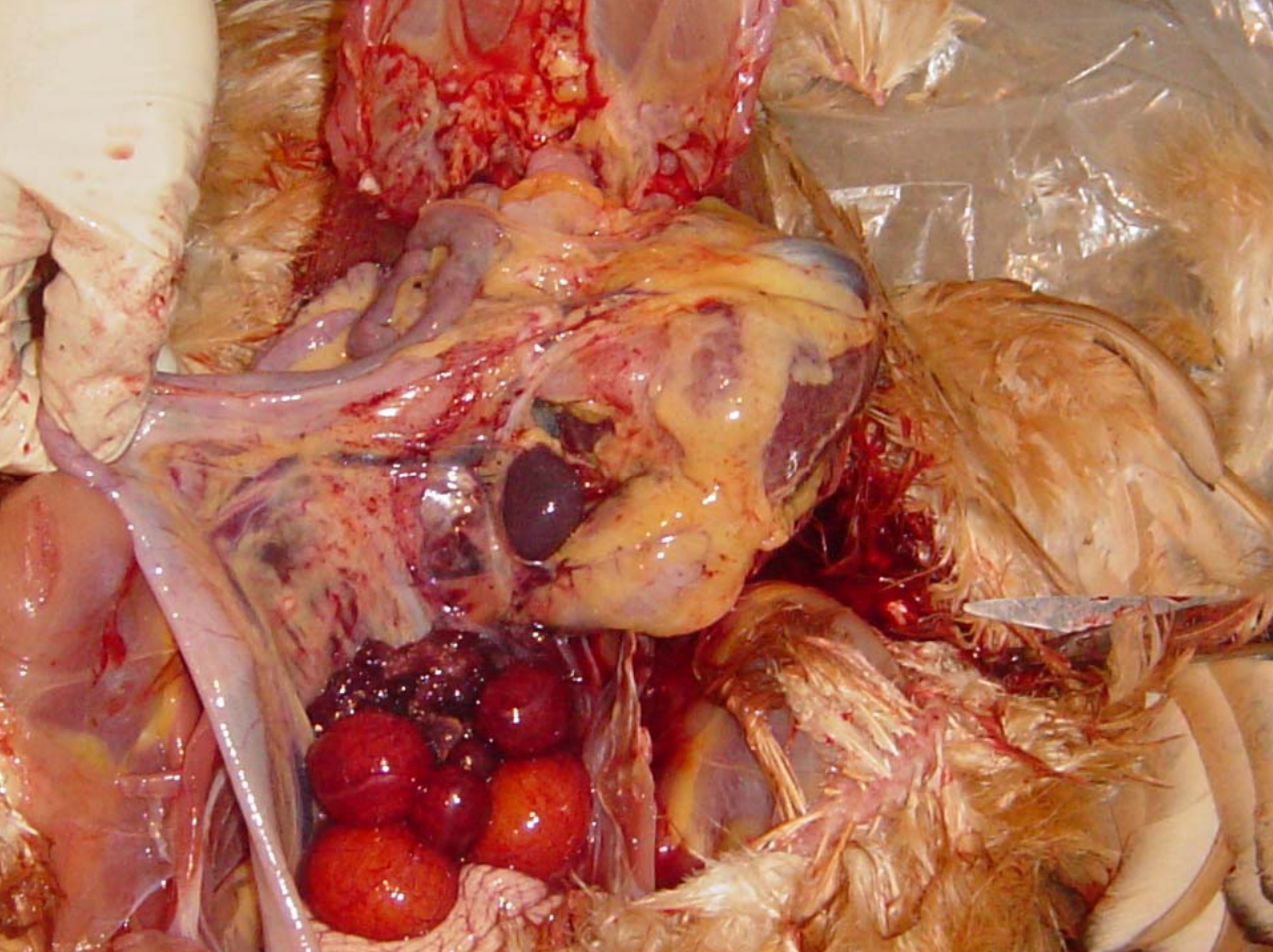


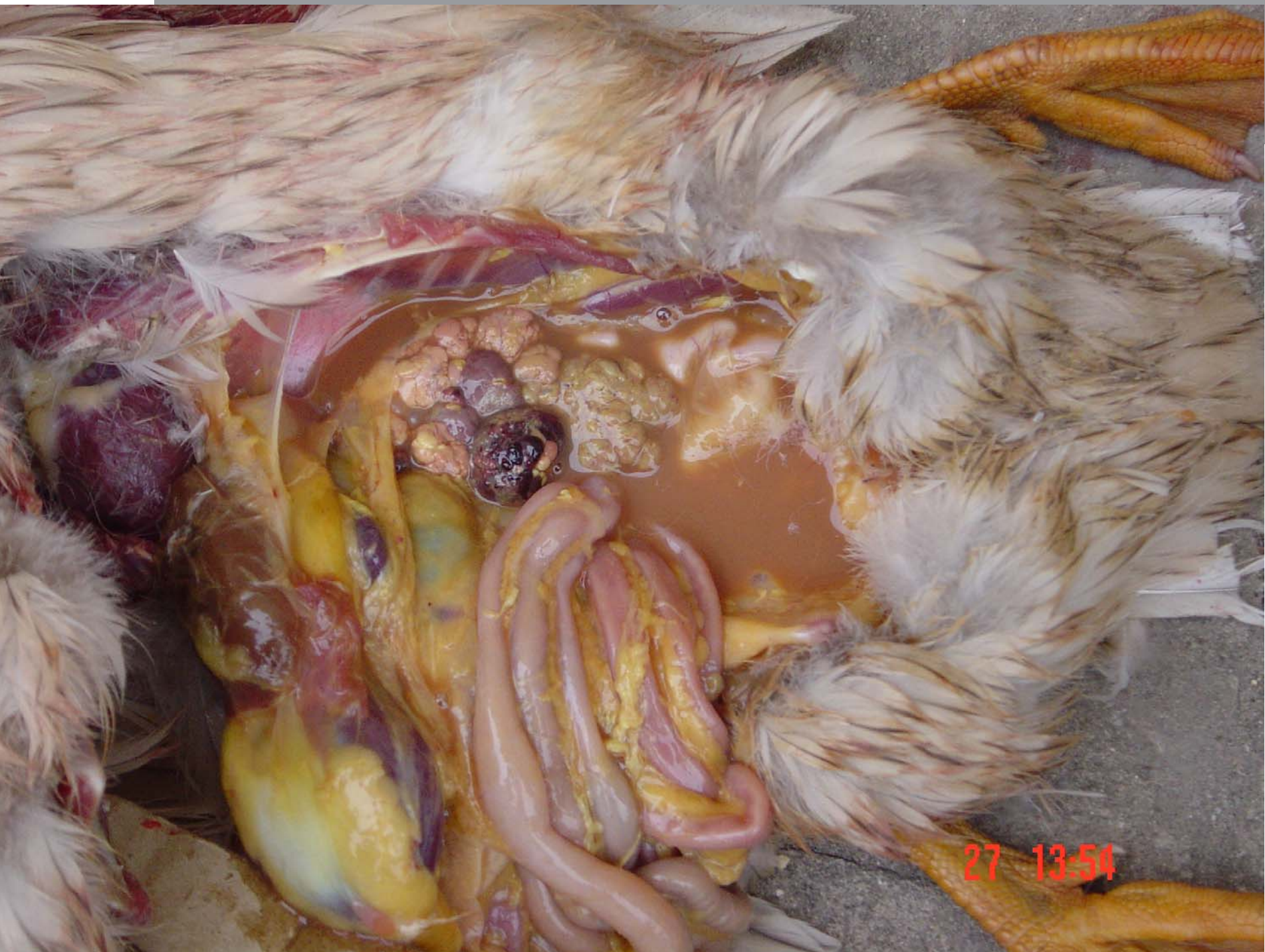


Congested ovary



Haemorrhagic ovary





27 13:54



